

## Dinner Parties Precede Opera

Localities attending Sunday night's performance of "La Bohème" included Mr. and Mrs. Matthew Camareri, Mr. and Mrs. L. S. Heints, and Mrs. Courtney Maxey who were dinner guests of Mr. and Mrs. George Coker at the Detroit Athletic Club before adjourning to Masonic Temple.

Also dining at the DAC before attending the opera were Mrs. William S. Anderson, Mr. and Mrs. Edward Dutton and Bill Dutton, who were the guests of Mary Ryan.

## Quarton Open House Wednesday Evening

Open house at Quarton school will be held at 7:45 p.m. Wednesday, November 19. Parents will meet in the gym for a discussion of "Children in the Schools in Relation to Special Services." Speakers will be Mrs. Florence Renton, art instructor; Miss Phyllis Gardner, music teacher; Miss Frances Curtin, health nurse; and Grant Barber, Quarton principal.

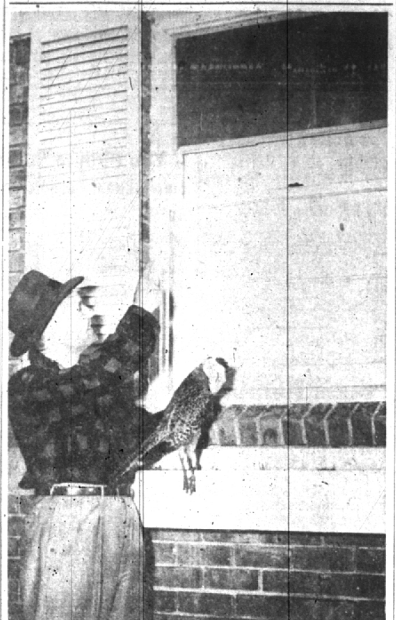
Goin' hunting?



Get ACCIDENT INSURANCE for the duration of your TRIP

It's available for as little as 3 days or as long as 6 months, and gives continuous protection anywhere on land, sea or in the air. Rates are low. See

The **STROM CO.**  
Woodward - 11 Mile Rd.  
LI 4-1111



W. DEAN NELSON, 2857 DORCHESTER, points to the cardboard-covered window that friend pheasant smashed in his hurry to get into the Nelson home Sunday evening. The confused bird made a solo through both the storm window and the inside pane while the Nelsons were at the dinner table. Mrs. Nelson was thankful that the bird selected the dinner hour for his fatal flight into the bedroom where their five-year-old daughter, Vicki, is usually at play.

(Eccentric Staff Photo)

## WCTU Rollcall Meeting

Election of officers and payment of dues will follow a one o'clock dessert luncheon at the November 14 meeting of the WCTU. The day's hostess will be Mrs. J. A. Bowers, 672 Bloomfield Court.

Birthdays, anniversaries, guests, births, parties are all news—call the society editor about them.

## Exchange Club To Hear Address By USAF Officer

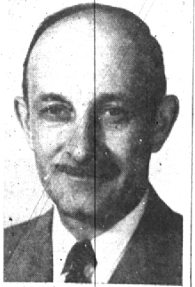
The Birmingham Exchange club will dedicate its Nov. 18 meeting to the United States Air Force. In keeping with this "Public Service Day," Col. Victor C. Swearingen, USAF, will be the guest speaker.

Col. Swearingen will speak on "The Unification of Germany." Former assistant attorney general of Michigan, special assistant to the U. S. Attorney General in the Department of Justice, Col. Swearingen was chief of the Overseas Operation of the War Department for the War Crimes Trials of Europe and Asia. In 1946-47 he was one of the judges of the U. S. Military Tribunal Number One in Nuremberg, Germany.

Currently he is chief of administrative investigations and complaints of the office of the inspector general.

## Have You Met . . .

Former Detroiters, Mr. and Mrs. Rudolph W. Andreasson who with their two children, Linda, 5, and Larry, 2 years old; moved to 1749 Buckingham road in September? Mr. Andreasson is service engineer with the Detroit Reamer and Tool Company. He is a member of the American Society of Tool Engineers and the Engineering Society of Detroit. He is fond of golf, hunting and fishing.



ROLLEE REESE

ALONG with the recent announcement of the new 1953 Chrysler line of automobiles, Mike Welch, Inc., local Chrysler dealer, has made known the appointment of Roland W. Reese as sales manager of the firm. Reese is well known locally, having been a local business man for many years, the past eight of which he was owner of Stroup's Market in the Wabek building. He is a past member of the Birmingham board of education and has participated in other civic affairs.

# Save in A&P's Thrift Event!



Long Flavor-Rich  
**Tomato Juice**  
46-Oz. Can **25¢**



"SUPER-RIGHT" U. S. CHOICE

Round  
Cube or  
Sirloin

## STEAKS

Want meat that's simple to fix and simply delicious to eat? Then choose one of these fine "Super-Right" steaks from A&P. And you may take your choice of round, sirloin or cube — at one low price. Don't miss this outstanding steak value!

**Lb. 89¢**

|                   |                    |     |
|-------------------|--------------------|-----|
| Fels Naptha       | 10 Bars            | 67¢ |
| Biscuit Mix       | 40-Oz. Pkg.        | 35¢ |
| Margarine         | 2 1-Lb. Ctns.      | 39¢ |
| Golden Corn       | A&P Whole Kernel   | 31¢ |
| Pineapple         | 10-oz. Half Slices | 23¢ |
| Niblets Corn      | 2 12-Oz. Cans      | 35¢ |
| Mixed Pickles     | Dandy Brand Sweet  | 29¢ |
| Ann Page Ketchup  | 2 14-Oz. Botts.    | 39¢ |
| Ann Page Macaroni | 3 1 1/2-Oz. Pkgs.  | 49¢ |
| Snarkle Desserts  | 24-Oz. Bot.        | 17¢ |
| Blended Syrup     | Ann Page           | 39¢ |
| Whitehouse Milk   | Evaporated         | 27¢ |

## Smoked Hams Ducklings

|                |                                  |                    |
|----------------|----------------------------------|--------------------|
| Pork Loins     | "Super-Right" 7-Rib End Portion  | Lb. 39¢            |
| Pork Loins     | "Super-Right" Whole or Half Loin | Lb. 49¢            |
| Ground Beef    | "Super-Right"                    | Lb. 45¢            |
| Smoked Picnics | "Super-Right"                    | Lb. 37¢            |
| Sliced Bacon   | "Super-Right"                    | Lb. 49¢            |
| Canned Hams    | Hygrade                          | 6 1/2-Lb. Can 5.99 |
| Slab Bacon     | Whole, Half or End Portion       | Lb. 59¢            |
| Liver Sausage  | Fresh or Smoked                  | Lb. 39¢            |

|               |  |         |
|---------------|--|---------|
| Chuck Roast   | "Super-Right" Blade Cut 7-8 1/2 Rib    | Lb. 69¢ |
| Beef Roast    | "Super-Right" 7-8 1/2 Rib              | Lb. 69¢ |
| Plate Meat    | "Super-Right" Choice Beef for Braising | Lb. 29¢ |
| Spare Ribs    | Small, Lean                            | Lb. 49¢ |
| Frankfurters  | All Meat Skinless                      | Lb. 57¢ |
| Large Bologna | Center Slices                          | Lb. 49¢ |
| Pork Sausage  | Pound Cello Roll                       | 39¢     |
| Pork Chops    |  | Lb. 73¢ |

|                    |                        |                              |     |
|--------------------|------------------------|------------------------------|-----|
| Peanut Butter      | Peter Pan              | 12-Oz. Jar                   | 37¢ |
| Chili Sauce        | Bennett's              | 8-Oz. Bot.                   | 18¢ |
| Presto Whip        | Daisy                  | 7-Oz. Can                    | 43¢ |
| Planter's Peanuts  | Fine for Cocktail Time | 8-Oz. Can                    | 35¢ |
| Pork Sausage       | Swift's                | 10-Oz. Can                   | 49¢ |
| Laundry Starch     | Nigora                 | 12-Oz. Pkg.                  | 20¢ |
| Old Dutch Cleanser |                        | 14-Oz. Cans                  | 27¢ |
| Bull Dog Bluing    |                        | 2-Oz. Bot.                   | 9¢  |
| Redi-Meat          | Broadcast              | 12-Oz. Can                   | 47¢ |
| Dried Beef         | Broadcast Sliced       | 2 1/2-Oz. Jar                | 33¢ |
| Dried Beef         | Broadcast Sliced       | 3-Oz. Jar                    | 61¢ |
| Corned Beef Hash   | Broadcast              | 16-Oz. Can                   | 35¢ |
| Vienna Sausage     | Broadcast              | 4-Oz. Can                    | 21¢ |
| Karo Syrup         | Blue Label             | 24-Oz. Bot.                  | 21¢ |
| Cameo Cleanser     |                        | 14-Oz. Pkg.                  | 12¢ |
| Simonize           | Floor Wax              | 14-Oz. Can                   | 59¢ |
| Bab-O              | Scouring Powder        | 14-Oz. Cans                  | 27¢ |
| Swift's Cleanser   |                        | 14-Oz. Cans                  | 23¢ |
| Peanut Butter      | Velvet                 | 14-Oz. Jar                   | 42¢ |
| Oxydol             |                        | Reg. Pkg. 27¢ Giant Pkg. 65¢ |     |
| Ivory Snow         |                        | Reg. Pkg. 25¢ Giant Pkg. 61¢ |     |
| Joy                | Liquid Soap            | Giant Bot. 65¢ 7-Oz. Box 27¢ |     |

|                 |                       |              |     |
|-----------------|-----------------------|--------------|-----|
| Pie Crust Mix   | Jiffy Brand           | 7-Oz. Pkg.   | 10¢ |
| Drop Cookies    | Hackman-Choc. Coconut | 1-Lb. Pkg.   | 49¢ |
| Shredded Wheat  | NBC or Kellogg's      | 2 Pkgs.      | 39¢ |
| Wheaties        |                       | 12-Oz. Box   | 21¢ |
| Orange Base     |                       | 2 6-Oz. Cans | 29¢ |
| Candy Bars      | Popular 5 1/2 Sizes   | 6 Bars       | 25¢ |
| Krispy Crackers | Sunshine              | 1-Lb. Pkg.   | 25¢ |



Fresh From Florida 250 Size  
**Oranges**  
Doz. **19¢**

|                |                                 |
|----------------|---------------------------------|
| Emperor Grapes | Lb. 10¢                         |
| Pascal Celery  | California 24-30 Size Stalk 19¢ |
| Grapefruit     | Florida 46-54 Size 3 for 29¢    |
| New Cabbage    | California Lb. 8¢               |

|  |                 |                                       |                 |
|--|-----------------|---------------------------------------|-----------------|
| U. S. No. 1 Grade — For Winter Keeping |                 |                                       |                 |
| <b>Potatoes</b>                        |                 |                                       |                 |
| Michigan 48-Lb. Bag                    | 2 <sup>49</sup> | Maine 48-Lb. Bag                      | 2 <sup>79</sup> |
| Cucumbers Fancy Waxed                  | 2 for 25¢       | Rutabagas Canadian                    | Lb. 5¢          |
| Tomatoes Red Ripe                      | 14-Oz. Pkg. 19¢ | Seedless Grapefruit Florida 5-Lb. Bag | 39¢             |
| Fresh Corn Golden Bantam               | 3 Ears 29¢      | Yellow Onions Michigan                | 3 Lbs. 35¢      |

Jane Parker, Spicy  
**Spanish Bar**  
Each **29¢**

|                                       |      |                          |     |
|---------------------------------------|------|--------------------------|-----|
| Fruit Cake Jane Parker 1 1/2-Lb. Size | 1.29 | Drop Cookies Pkg. of 25¢ |     |
| White Bread Jane Parker 20-Oz. Loaf   | 17¢  | Glazed Donuts 2 Doz.     | 39¢ |

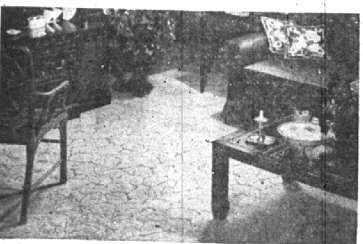
New York Aged  
**Cheddar Cheese**  
Lb. **69¢**

|  |     |                          |  |
|--|-----|--------------------------|--|
| Sunnybrook Eggs Grade "A" Med. Size Doz. | 63¢ | Wildemere Butter Lb. 72¢ |  |
|--|-----|--------------------------|--|

All prices in this ad effective through Saturday, November 15th  
**A&P Super Markets**  
THE GREAT ATLANTIC AND PACIFIC TEA COMPANY

**GARAGES**  
COMBINATION STORM SASH  
OVER 300 GARAGES IN THE BIRMINGHAM AREA  
It pays in satisfaction to deal locally—Costs no more  
**STUART E. SHEILL**  
1690 E. MAPLE  
Phone MI 4-3713

Every leaf appears to be  
sculptured by hand



**\$9.75**  
Sq. Yd.  
You will sing the praises of this famous manufacturer's carpet because its two kinds of yarn (100% ALL WOOL) produce a two-level pile for texture interest. The subdued pattern is perfectly attuned to any setting and its monochrome colors conspire to make real carpet beauty.

We Give **"J.N." Green Stamps**  
**Harold B. Brown**  
CARPETS and RUGS  
Between 11 and 12 Mile Roads  
Open Mon. Thurs., Fri., Evenings 'Til 9  
Saturday 'Til 5:30  
LI 2-9595  
JO 4-373  
2863 Woodward  
Budget Terms Available