

How helpful it would be if each of us could have some one whisper into our ear every hour words like: "Be grateful; be kindly toward others; smile often; cease to gossip; idly; be not afraid of work; take more of your spirit than your body."

Church Request Rejected By City

The city commission Monday night upheld its decision to pave Melton between Bradford and Fourteen-Mile road in the face of objections by Our Shepherd Lutheran church.

approved the paving over their objection but agreed to pay 15 per cent of the assessed cost; then later refused to pay this percentage.

Commissioners told representatives of the church that they regretted that they could not accept the 15 per cent cost and that the entire bill must be carried by property owners abutting the street to be improved, as discussed at the hearing on confirmation of the assessment roll.

Ask Further Study On Alley Dispute

The controversial Maple-Chestnut alley improvement was referred back to City Manager Donald C. Egbert for further study Monday night by the city commission.

The question of who is to improve the alley dates back to 1947 when merchants in the block affected showed their intentions to gravel the alley themselves. This was not done and city and merchants alike have attempted to improve the alley and gain more parking space to ease the traffic situation.

Commissioner Milton F. Maller said that larger parking facilities and plans for the area in front of the stores also were a part of the question.

The city delayed creating a special assessment district for the paving of the alley until a report is made by Egbert.

City Property Deeded

Upon recommendation of City Assessor Elmer Haack, Birmingham commissioners have instructed City Clerk Irene Hanley to prepare a quit claim deed for lot 58 of Bloomfield Estates subdivision. The property, northwest of the Springdale Park entrance will be deeded to Mr. and Mrs. William A. Teasel who have paid the balance on the land contract.

Use Classified Ads—They Sell!

GARAGES

PORCHES STORM SASH BREEZEWAYS

Over 200 Garages in the Birmingham Area

It pays in satisfaction to deal locally—Costs no more

STUART E. SHELL
1690 E. Maple BIRMINGHAM
Phone MI 4-3713 FHA Term

Home Modernization

Remodeling and Repairs of all kinds

Estimates on original and expert ideas, on all home modernization problems, large or small.

ASK FOR MR. LEONARD

The Garden Center
Lincoln 2-0711

BITS OF BIRMINGHAM

When the MSC alumni last week gave the state legislature its second annual dinner, Bham's Reg. Howard E. Estes happened to sit next to MSC Secretary Karl McDonel. Knowing Estes represented the Birmingham area, McDonel remarked that excluding Wayne and Lightham counties, the city of Birmingham seemed to have the most number of students attending the East Lansing institution. "McDonel also highly praised the fine scholastic standing the Birmingham group has and is making," Estes added.

A really welcome sound of spring greeted this Wanderer Friday evening as we returned from the Community Council Institute. Driving past a boggy area we slowed our car and then stopped to listen for a few minutes to the chorus of "peepers." The little fellows were sounding off at a great rate and their happy chatter convinced us that the robins, etc., which have been appearing around town really knew what they were doing. Spring is officially here!

A group announcement of spring made for one Birmingham lady last week. A glance through her window showed numerous blackbirds and sparrows in her yard along with a blue jay, flicker and seven robins, all busily eating the crackers which had been thrown into the yard for them.

Joe Rolando, manager of the Kroger store, has recently made a major donation for the comfort of Oakland county's injured dogs. His gift of an animal stretcher to the Oakland County Animal Shelter will make it possible to transport injured or sick dogs to the shelter with far less pain than has been their lot in the past. In speaking of the gift, Mrs. William Ferguson stated that it was the only stretcher the shelter has and undoubtedly will be of great plus to the men called upon to bring in these dogs.

Thomas T. Stolberg, 816 Pierce, for many years has made frequent trips between Birmingham and Ludington, Mich., where his grandparents and other relatives lived. Last Sunday evening, Mrs. Stolberg left Ludington for home, and ran into a real snow storm. Arriving in Birmingham at 10 o'clock that evening, Tom declared to this Wanderer: "Never in all my driving across this State

did I encounter such a snow storm as we found between Ladington and Clare. It took over four hours to drive less than 100 miles, and there were times when the snow was so thick one couldn't see 50 feet ahead. Boy, what a lion March turned out to be!"

Word comes from Ft. Lauderdale, Fla., that two Birmingham fishermen, H. J. Brighton and Dick Brighton, of 17601 Coral Gables, shared a catch consisting of two sailfin, two red snappers, a kingfish, and bonito during a recent deep sea trip. Dick topped his father in the sailfining, booting one which measured 6 feet 9 inches and weighed 45 pounds. The smaller fish scaled 36 pounds with a six foot 1 inch length.

Phil J. Williams, E. Maple shoe man, doesn't mind being ribbed, even needed a bit, by his friends. That is why, a few days ago, he laughed right out loud when one of his old friends said in a group: "Remember, Phil, that pair of Lake Superior lake trout you harnessed up to haul you in your canoe from Isle Royale to Eagle Harbor . . . in those days when you roughed it up there, but wouldn't buy an outboard motor for your canoe because—as you said—"I can't depend on them new-fangled gadgets to get me back and forth to the mainland!" Phil just smiled, in fond recollection, perhaps, and said: "Yep, those were the good old days. Those two big lake trout really gave me dependable transportation—except in the spawning season, of course, when I'd have to stay close to the island."

Things are looking brighter in the Birmingham city commission room. In the couple of weeks since Commissioner Frank Rising demonstrated to his colleagues how dirty the room's walls were, the west and north walls have been washed. The contrast between the clean portion and the unwashed walls is very noticeable.

Bham Police Detective Merle Holmquist is searching for the culprit who late Monday afternoon walked off with the new plasmodium telephone receiver from the city's switchboard in the main lobby of the municipal building.

Mayor Dean C. Beier is back in town sporting a deep suntan acquired on a Florida vacation.

Lathrup Man Will Head State's OIT

A Lathrup man, Arch Black, of 18650 Rainbow drive, has been appointed to serve with the United States government, according to William T. Hunt, district manager for the Department of Commerce and National Production Authority.

Black, former vice president of Borg Warner and Thermostat, Inc., will serve as business specialist and head up the World Trade division. On the local level his activities will include the functions of the Office of International

Referred to Manager

A request from G. A. Ziegler for the construction of a sidewalk at the corner of Maryland and Southlawn has been referred to City Manager Donald C. Egbert for study. Ziegler pointed out that at this point the street is high and drains on his property. He is requesting installation of a drainage ditch between the walk and road to eliminate this.

We Will Mix You Any Colors In Paints

MI 4-9034

Greens

240 S. Woodward

INSURANCE - BONDS THE BIRMINGHAM AGENCY

INSURANCE FOR EVERY NEED

Phone MI 4-2422

106 S. Woodward - Birmingham

Chas. B. Bradford
G. Oscar P. Peterson

AFTER we SELL we SERVE

Trade for Michigan.

Black was selected because of his long service in world trade and the practical knowledge he has obtained during his world travels.

According to Hunt's announcement, he will be available for consultation on any problems concerning world trade by Michigan manufacturers.



You may have looked the field over, but if you haven't seen these homes, you've missed an opportunity to properly solve your housing needs.

1195 SOUTH BATES. New Brick Colonial. Decorated in the modern manner. Dining room. Nook. 3 Bedrooms with good closets. Gas A/C Heat. Special at \$21,500.

1480 FAIRWAY DRIVE. A "Little Gem" and delightful. Beautifully decorated by a specialist. 1st floor bedroom, bath. Lovely studio-bedroom, bath up. Carpeting. Draperies. Disposal. Garage. Fenced yard. \$26,500.

1849 PINE STREET. Substantial 3-bedroom Colonial. In really good condition. Excellent closets. Recreation room with fireplace. New grey carpeting. Dishmaster. Storms and screens. Quarten School 1 1/2 blocks. \$28,000.

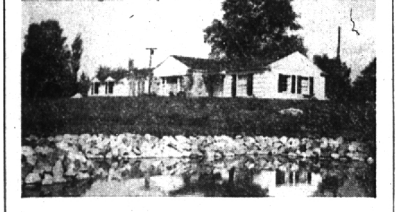
153 LARCHLEA. Wonderful 140-foot setting for this "all on one-floor" brick Ranch Home. 3 Bedrooms. Living room with fireplace and picture window. Drapes, Dishmaster. 2 1/2 car garage. \$22,500.

APPOINTMENTS ARRANGED TO SUIT YOUR CONVENIENCE.

SNYDER KINNEY & BENNETT
INC.
Realtors

239 S. Woodward Midwest 4-7000

WOULD YOU LIKE TO LIVE IN FRANKLIN?



Call us for information on this beautiful ranch home. Living Room 32x15 with fireplace and picture window. Panelled library with fireplace. Two large bedrooms. Ultra modern kitchen and utility room. Screened breezeway and attached garage.

WALSH, JAMES & WASEY Co.
Realtors
431 S. Woodward Ave., Birmingham MI 4-6500

You'll Like THE WILLOWS!!



One of Birmingham's loveliest streets in summer is Winthrop Lane . . . bordered on each side with graceful sweeping willows . . . a perfect setting for this attractive Colonial near Quarten School. Child-safe, too . . . there's little through traffic on this quiet residential lane.

- YOU'LL ENJOY THE . . .
- Cheerful bay in the comfortable Living Room . . . fireplace
 - Sheltered living-dining porch . . . separate Dining Room
 - 3 large Bedrooms (each Twin size) . . . tiled Bath
 - Panelled Games Room . . . extra Lavatory
 - Sheltered garden . . . fragrant lilac hedge
- You school problems are solved (it's only a step away) . . . playmates are plentiful . . . your entire family will have fun living here. You'll like the house, too, as you inspect it. Let's see it today!

CALL

MAX BROOCK INC.
REALTORS
ESTABLISHED 1916

300 S. Woodward Ave. Midwest 4-6700

QUALITY BUILDERS WALTER H. DESIMPEL and SON GENERAL CONTRACTORS

30 years of satisfied customers

Residential and Commercial building, also remodeling. Specializing in Birmingham and Grosse Pointe areas. Midwest 4-8151 Jordan 4-6674 Tuxedo 2-3219

LOOKING FOR A BUILDING SITE?

Yes, we know they are scarce, also . . . but we are pleased to offer these choice selections.

- In Bloomfield—scenic 10 acres in well-restricted location. Choice residential neighborhood. May be divided into two parcels. Priced right.
- Two and one-half wooded acres on Bristol Lane—"a lost lane end to Heaven". Choice property. \$3,850.
- In the country but Birmingham School District. One and one-third acres on pavement with a long range view. Only \$1,500!
- Fishing, swimming, sailing, and ice skating available. Please the entire family with this wooded lot (including apple trees) on Wing Lake Road within 2 blocks of school and transportation. There's water available without having to pay for a well. \$3,900.
- Two 1-acre lots on Bellvine Trail between 13 and 14 Mile Roads, East of Lahser. In a neighborhood of rolling land with beautifully landscaped ranch homes and plenty of space to breathe. \$2,300 each.

BENJAMIN and STEPHENS, INC.
219 S. Woodward — Realtors — BIRMINGHAM
Midwest 4-3232 JORDAN 4-5728

QUALITY



767 Glengary Road

in construction, in finish and in furnishings is evident everywhere in this fine home in Bloomfield Village.

Built in 1950 by George McKnight, it speaks of painstaking care in every phase of its building. The owners are naturally very proud of it.

- Here are a few facts about it.
- Lot size — 150' front x 190' deep.
 - Exterior — Brick, split fieldstone and frame.
 - Heat — Forced warm air with Mueller Climatrol gas furnace.
 - 1st Fl. — Living room 15'6" x 29' — Dining room 15' x 16' — Beautiful modern kitchen — Den 15' x 28' — Fine lavatory and powder room — superb master suite with dressing room and a luxurious bath.
 - 2nd Fl. — Three charming family bedrooms and two beautiful tiled baths. Maid's room with tiled bath. Large storage space. Closets galore.
 - Basement — Partial, with recreation room 14' x 20'.
 - Garage — Oversize with electric door opening equipment.
 - General — Aluminum storms and screens; aluminum foil insulation. Brooks sprinkler system. Attic fan.
 - Inclusions — all tacked down carpets of high quality.

If you are looking for a fine house, here it is. You need look no further. Let's see this wonderful home today!

WATT, MANUEL & SNYDER, Inc.
Realtors
There is no substitute for Integrity

298 S. Woodward Midwest 4-6300