

"SPRING IS TOO LATE!"
 Trees over 4" diam. must be planted in winter. Order next summer's shade now. Remove trees while your lawn is frozen—it's more ECONOMICAL! (DISKES DIAGNOSED)
 PHONE LE 2-8132
 Days or Evenings
 Trim in The Dormant Season
JOHONNOT TREE SERVICE
 Graduate Forester

The McBRIDE
 NEW HARDWARE STORE
 154 South Woodward
Grand Opening
 Fri. and Sat., March 28 and 29
 —SOMETHING FOR EVERYONE—

"Amazing"
 the little lady says. She's referring to the
1 DAY REPAIR SERVICE
 which restores refreshing rest and comfortable sleep to one of the greatest robbers of restful sleep, a time worn bed. Get your mattress and/or boxspring fixed like new between morning pickup and afternoon delivery, of the same day.
CALL US TODAY!
OXFORD MATTRESS CO.
 27 Years in Oakland County
 Phone— Dial O ask for Enterprise 6310
 40 E. PIKE ST. PONTIAC
 FOR ESTIMATES

Detroit Edison Must Outguess Mother Nature

When the weather suddenly does an about-face as it is so apt to in this month of March, folks at Detroit Edison are seldom caught off guard. By being at least one jump ahead of Mother Nature, they manage to keep the kilowatts coming through thunderstorms, sleet, snow, hail any anything else the elements dish out.

At least nine departments are well versed in what the weatherman may have in store, but each has its own reason for knowing. Construction has to know whether it's safe to pour concrete on a new substation or plant site. Purchasing wants to be sure that high winds or heavy fog are not going to prevent the unloading of coal for hungry boilers.

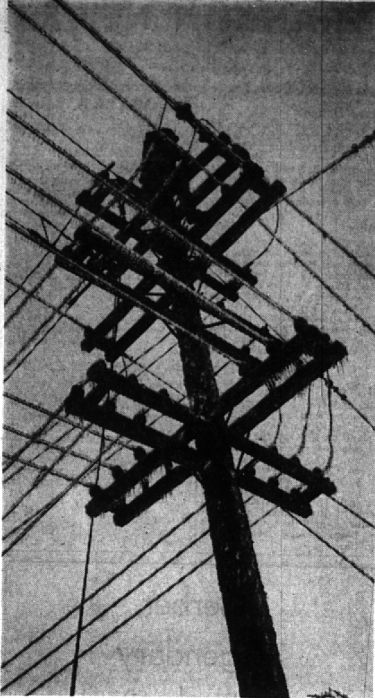
Production has to be ready with the current when sudden darkness grips the area and more than three and one-third million people throughout Southeastern Michigan, or any part of them, start flipping light switches.

EXTREMES OF weather are always of interest to this latter department—when it's hot people turn on fans and when it's cold they bring out electric heaters. And so it goes with all the "operating" departments of the company.

Of course, the most concerned with snow, sleet, high winds and thunderstorms is the overhead lines department.

IT SOUNDS a bit like all Edison folks do sit around and wait for it to rain, but in between times they check the poles, trim the trees which may interfere with service, repair irons, exchange light bulbs and make extensions to supply the electric service which its customers are used to. Last year in Oakland County alone, 9,031 new customers were connected for residential and farm service.

BIRMINGHAM FRUIT CO.
 124 1/2 Midwest N. Woodward 4-4030
 S.D.M. LICENSE
 S.D.D. LICENSE
FREE DELIVERY
FREE PARKING at rear of Store



LINEMAN AT TOP OF POLE CHECKS LOOSE CONNECTION
 Part of Edison program to prevent possible power failures

Bike Safety Program Scheduled for April
 Plans are underway for the annual bike inspection in the City of Birmingham, according to Police Lieut. Henry Timm. About 2800 bikes will be inspected, licensed and equipped with Scotchlite tape during the 1952 program. Started in 1948 by Timm, the program has grown each year and has been responsible for a sharp drop in the number of accidents involving bikes within the city limits. It has been based on the mechanical safety of the bicycle and instructions in its proper use for riders. CHILDREN HAVE been taught the importance of good brakes and proper lights. They have heard the dangers of overloading their bikes and of "trick" riding. The importance of obeying traffic rules and regulations as they govern automotive vehicles has been stressed. PTA groups and service clubs, principally the Lions and Kiwanis, have worked closely with Timm as well as local schools. City garages have offered their facilities each year during the checking periods and local theaters have included special trailers to their programs. In the past all bikes have been taken to one central checking station, but, according to Timm, the program has been altered this year. "THAT FIRST year we checked 700 bikes," he said. "We'll handle about four times that amount this year. Some of the boys and girls would have to come too far to reach the station and it creates a bottleneck when they all arrive at once. "This year we are selecting about a dozen garages scattered throughout the city. The designated stations will have a Kiwanis sticker on their windows and will be announced through the papers, the school and participating organizations. "Charles Savage is in charge of the details which the Kiwanis will handle. "As each bike is found to meet the requirements of safety, the Scotchlite tape will be applied behind the front and rear. We have found that this is more satisfactory than the reflectors, is quicker to install and lasts just as well. "WE USE BOTH red and white 'lite' tape. It's visible for long distances and should provide ample warning for any alert motorist that a bike is on the street or highway. Timm stated that details for the 1952 check were not completed as yet but that it was expected the work would be done early next month. He added, also, that the bicycle court is getting underway again in local schools, where young offenders are dealt with by their classmates who hand out penalties as they think the case warrants.

Named to Executive Staff of News
 Frank N. Mosher, 312 Chestersfield, has been appointed to the executive staff of The Detroit News as assistant business manager. Mosher, who has resided in Birmingham for 16 years, has been connected with the national advertising department of the News. General news deadline is 4:30 p.m. each Tuesday.

SCHOOL DISTRICT OF THE CITY OF BIRMINGHAM

Oakland County, Michigan

NOTICE OF LAST DAY OF REGISTRATION

A special election having been called to be held in said school district on the 31st day of March, 1952;

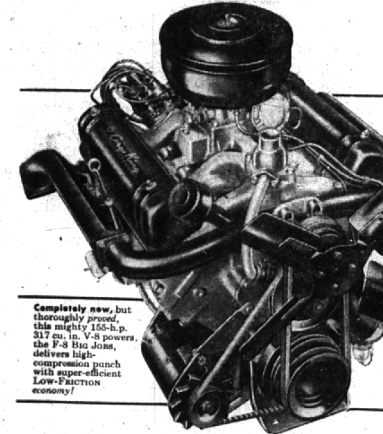
THEREFORE, NOTICE IS HEREBY GIVEN, that Friday, the 21st day of March, 1952, up to 5:00 o'clock P.M., Eastern Standard Time, is the last day on which unregistered persons may register in order to be eligible to vote at said special election.

Application for registration should be made to the city clerk of the city, or to the township clerk of the township, in which the elector resides.

Persons already registered upon the registration books of such city clerk or township clerk, need not re-register.

AMOS F. GREGORY,
 Secretary of the board of education.

Dated March 6, 1952
 "Notice is hereby given that inasmuch as March 10, 1952, is the last day upon which unregistered electors may register in order to vote at the April 7, 1952, city election, therefore persons registering after March 10, 1952, pursuant to the above notice, may not vote at said city election.
 Irene E. Hanley
 City Clerk of the City of Birmingham."



For '52... Ford offers new LOW-FRICTION engines for today's SPEED HAULING needs... and at NO INCREASE IN PRICES!

- CHOOSE FROM FIVE GREAT TRUCK ENGINES!**
- 101-H.P. COST CLIPPER SIX:**
 New LOW-FRICTION design. 215 cu. in. Available Series F-1 through F-5.
 - 106-H.P. WORLD-FAMOUS V-8:**
 Proved in over 2,000,000 trucks. 239 cu. in. Available Series F-1 through F-6 C.O.E.
 - 112-H.P. PROVED BIG SIX:**
 254 cubic inch displacement. Available in Series F-4 (110-h.p. in F-6 C.O.E.).
 - 145-H.P. CARGO KING V-8:**
 New LOW-FRICTION design. 279 cu. in. Standard in Series F-7 Big Job.
 - 155-H.P. CARGO KING V-8:**
 New LOW-FRICTION design. 317 cu. in. Standard in Series F-8 Big Job.

Now... FIRST TIME IN AN ANVIL TRUCK!

Modern High-compression, LOW-FRICTION design liberates "captive" power in three completely new Ford overhead-valve truck engines. Result: gas saving up to 14%!

Ford economy engineering steps ahead again... with flow completely new engines that cut friction losses, deliver more usable horsepower because of greater efficiency! For the first time in any truck, you get the full economy of gasoline truck engines that combine high-compression, and short stroke LOW-FRICTION design and overhead valves... and at no increase in prices!

CHOICE OF V-8 OR SIX
 New Low-Friction engines (two V-8's and a Six) team up with the famous Ford Truck V-8 (advanced to 106 h.p.), and the 112-h.p. Big Six. You can choose power "tailored" to your specific truck job!

SAVE ONE GALLON IN SEVEN!
 New LOW-FRICTION short stroke design cuts piston travel up to 20%, means less drag, heat and friction wear. These ultra-modern Ford truck engines deliver more of the power they develop... save up to 14% on gas! Power is upped too! The 145-h.p. LOW-FRICTION V-8, for example, delivers more horsepower per cubic inch displacement of any gasoline truck engine among the ten leading makes!

Choose from Five great engines, over 275 series power combinations to do most any hauling job from 4,000 lbs. G.V.W. to 41,000 lbs. G.V.W. Ford is truck news for '52... get the facts today!

COME IN - SEE US TODAY!
FORD TRUCKS for '52
COST STILL LESS TO RUN!

HAROLD TURNER, Inc.
 Turn to Turner—Your Friendly Ford Dealer
 464 SO. WOODWARD AVENUE PHONES MIDWEST 4-7500 or JORDAN 4-6266
MARCH IS FORD TRUCK MONTH... IT WILL PAY YOU TO SEE US!

Notice of Special Election

TO THE QUALIFIED ELECTORS OF THE SCHOOL DISTRICT OF THE CITY OF BIRMINGHAM, OAKLAND COUNTY, MICHIGAN

NOTICE IS HEREBY GIVEN, that an election will be held in the School District of the City of Birmingham in the County of Oakland, and State of Michigan, on Monday, the 31st day of March, 1952, from 7:00 o'clock A.M. to 8:00 o'clock P.M., Eastern Standard Time, to vote upon the following proposition:

TAX LIMITATION PROPOSITION
 Shall the limitation on the total amount of taxes which may be assessed each year against property in the School District of the City of Birmingham, County of Oakland, State of Michigan, for all purposes except taxes for the payment of interest and principal on obligations incurred prior to December 8, 1932, be increased as provided in Section 21, of Article X of the Constitution of Michigan, for a period of five (5) years from 1952 to 1956, both inclusive by 35/100 of 1% (\$3.50 per \$1,000) of the assessed valuation as equalized, for the purpose of paying operating expenses in said school district?

NOTICE IS FURTHER GIVEN, that the voting places for said election will be as follows:

The polls for the election will be open in the Adams, Barnum, Quanton and Pierre School Buildings, Birmingham, Michigan; the Bloomfield Village School Building, Bloomfield Village, Michigan; the Franklin School Building, Franklin, Michigan; and the Walnut Lake School Building, Inker and Walnut Lake Road, Route No. 1, Birmingham, Michigan; March 31, 1952, at 7:00 o'clock A.M. Eastern Standard Time and will close at 8:00 o'clock P.M. Eastern Standard Time.

The following statement has been received from the County Treasurer as to previously voted increases in the total tax rate limitation affecting taxable property in the school district, to-wit:

I, Charles A. Sparks, County Treasurer of the County of Oakland, State of Michigan, do hereby certify that according to the records in my office, as of March 11, 1952, the total of all voted increases in the tax rate limitation above the 15 mills established by Section 21 of Article X of the Michigan Constitution, affecting taxable property in the School District of the City of Birmingham, in said county, is as follows:

Local Unit	Voted Increase	Years Increase Effective
School District of the City of Birmingham, located in the townships of Bloomfield, Southfield, Troy and West Bloomfield, and the Cities of Bloomfield Hills and Birmingham	For building 6.50 mills	1950 to 1969 incl. Date voted Nov. 10, 1949

AMOS F. GREGORY,
 Secretary of the board of education of said school district.
 Dated: March 17, 1952

ELECTRICAL Contractor
 Residential & Commercial Wiring
REPAIRS
 MI 4-5815
 James L. Bennett