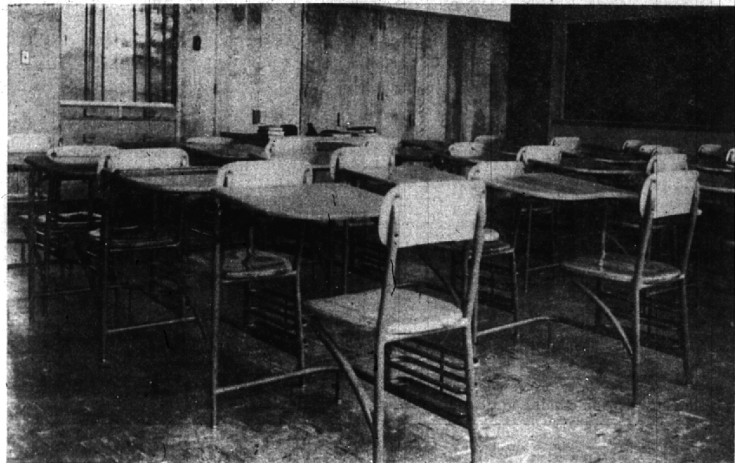


SUNLIGHT AND ROOMINESS ARE FEATURES OF THE HUGE GYM
Ultra-modern plant offers nearly every form of indoor recreation (Eccentric Staff Photo)



LIGHTWEIGHT DURABLE CHAIRS, GREEN BLACKBOARDS and an abundance of light greet the student in every classroom in the new building. (Eccentric Staff Photo)

Sports Galore, Space Unlimited For Athletics

Athletic-wise, the new high school opens the door to an almost limitless field of physical activity.

The huge gymnasium with its myriad of sustaining rooms will, when completed, be one of the largest, finest equipped units in the state.

Athletic Director Frank Whitney regards the recreational facilities at the new school as the answer to every physical sports need of all residents in the school district.

"If our plans are realized," Whitney said, "Birmingham will have as good, if not better recreational program as any high school in the state."

The gymnasium is not completed. Whitney explained that labor difficulties and strikes were delaying work that should already have been completed.

BIRMINGHAM high school students will have the best of athletic facilities, this point seems certain.

Featured in the athletic set-up are training rooms with physiotherapy equipment, a public address system that reaches locker rooms and showers, double shower units with 16 showers at each end of the gymnasium and a lobby that will someday house ping pong tables and shuffleboard courts.

A maximum standing room crowd can be as large as 4,000 persons. The maximum seating capacity will be 3,000 when the three stage seating arrangement is finished.

The gymnasium will be one of the first field houses in Michigan to have tubular lighting.

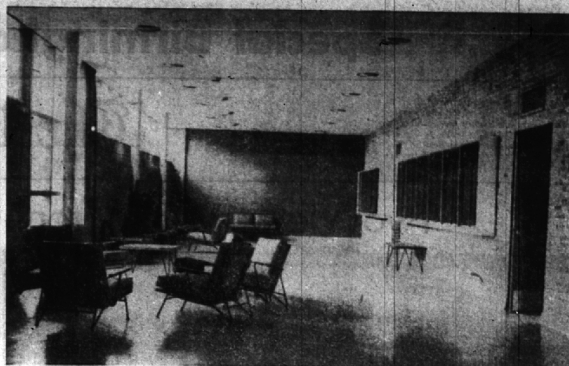
TWO REGULATION size basketball courts can be played on at the same time. Without basketball the gym floor can be used for 10 badminton courts or two volley ball courts.

Still another feature of the facilities is a small apparatus gymnasium equipped with trampoline, weight lifting equipment, wrestling ring, high and parallel bars, horse back, punching bags and wall pulleys.

In the event of an overflow audience, this gym can be thrown open onto the main gym for additional seating space.

A large room adjoining the gym is slated for a swimming pool at some later date. Coaches hope to use this room for warming up athletes for outdoor games. Track, football and baseball teams could continue their drills indoors if the weather prevented outdoor practice.

To the entering freshman the new Birmingham high school offers the best in physical education.



THE SUNLIT, SPACIOUS LOUNGE GREETs visitors inside main door. Students find the lounge ideal for relaxing conversation and for brushing up on the books. (Eccentric Staff Photo)

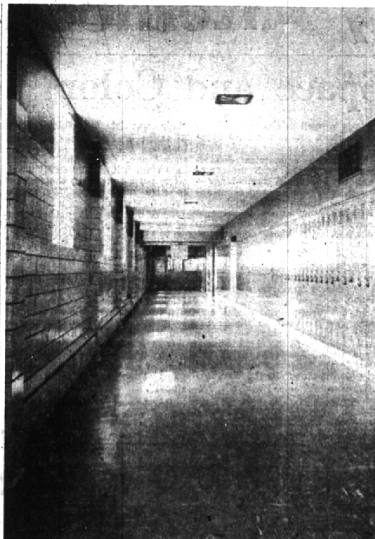
Congratulations
BIRMINGHAM
on the Completion of
YOUR FINE NEW HIGH SCHOOL

Wm. Bortolotti & Sons
21070 COOLIDGE
OAK PARK, MICH. Phone JOrdon 4-5913

Glass Block Installation
IS OUR SPECIALTY

HANNA, ZABRISKIE
AND **DARON**
BUILT THE
INSULATED
"GUNITe" WALLS
In the New
Birmingham High School

6425 TIREMAN AVE.
Detroit, Michigan
Phone TEXas 4-0070



BIRMINGHAM STUDENTS WALK IN THE LIGHT through most of the school's hallways. The building has been designed to eliminate gloomy, dark inside halls. No flashlights are needed to find an obscure book in these lockers. (Eccentric Staff Photo)

In 1951 there were 1130 children in private schools, 215 in children of school age residing in college and 45 in "other" schools. Birmingham who were not enrolled. There were 80 who were employed in public schools. Of these 590, 30 in the armed forces and 5 attended parochial schools, 200 in special schools.

The **OVERHEAD TYPE**
DOORS

WERE FURNISHED

By

T. L. HITCHCOX
Company

14934 TELEGRAPH RD.
DETROIT 23
MICHIGAN
Phone KENwood 2-4300

Landscaping

on the

BIRMINGHAM HIGH SCHOOL

done by

Harry White & Sons, Inc.

PONTIAC, MICHIGAN

Federal 2-3064

CUNNINGHAM-LIMP
COMPANY

GENERAL
CONTRACTORS
for
Birmingham
High School

3087 WEST GRAND BOULEVARD
DETROIT 2, MICHIGAN

TRINITY 3-4000