

New Birmingham High School To Be Dedicated Sunday

See Special Section

A special six-page section devoted to news and feature stories and photos of the \$2,100,000 building. In the Special Section with Today's Birmingham Eccentric

The Birmingham Eccentric

BIRMINGHAM, MICHIGAN, THURSDAY, JUNE 5, 1952

PART ONE

36 PAGES FIVE CENTS

There are some people who are so lacking in appreciation that they seldom thank others for nice things done for them. Such people may, perhaps, feel an inner sense of needing to say "Thank You", but they have failed to make thinking a habit.

75TH YEAR—NO. 12

THIS and THAT

By G. R. A.

Always remember that a unit of government, all the way from a township up to the federal type, in and of itself produces little of actual physical value to society. Made up of people, government first of all must be paid from the taxes you provide to support it. Every item of cost acquired by government basically comes from the pocketbooks of the citizen.

Let no public official, elected or appointed, ever convince you that government creates either opportunity or wealth in and of itself. Government should be, and always remain, the servant of the citizens—though its trend and drift is always to become your master.

Some men and women accept a public office because they honestly want to serve their fellow citizens. Such office-holders, in the minority, are of great value to society. They are conscientious, they are industrious, they are honest, they are just, they are fair, they are God and all good people.

There is but one chief reason why union leaders want lawmakers to enact legislation requiring all employers to accept the closed shop principle. That is to say, the leaders will be assured of an easy way to achieve 100 per cent union membership in any company they do business with—this enables the leaders to get the maximum in dues with the least personal effort.

It also places working men and women under compulsion to join a union if they want to eat—thus taking from them freedom of choice whether or not they want to join a union. In brief, it makes the U.S.A. less a free nation.

To assume that our colleges and universities are possessed of all knowledge, of all power of leadership, of most of the finest answers to the questions that confuse and confound us, is to assume a great deal that is not so.

People who operate institutions of higher learning are human, like ourselves.

When they are possessed of modesty, sincerity, and something of the sense of the citizen for the truth... then they are performing wonderfully for society. There are, of course, such educators... but not enough of them to make education a more progressive, desired and thus supported commodity today.

These raids on girls' dormitories by college boys are getting so some parents are so concerned that they will keep their daughters home before the snow gets off the ground each spring. After all, tuition costs and living costs are high enough without father having to pay for "dainty souvenirs" for some of those two-legged wolves.

Personally, we are beginning to think that Boss Truman is the most powerful personality on the North American continent. Though he (and ours) Little Harry is quite willing to brush aside Joe Stalin, Congress, and the Supreme Court, she appears able to control him at will. Indeed, she is given most of the credit for Harry's refusal to run for re-election. What a gal!

Street Light Lag

Birmingham faces a six months lag in the installation of new street lights, city commissioners learned Monday evening. An order for 50 new lights was authorized on May 27.

Home Rented the Second Day

Al Wesley of 1042 Floyd street, Birmingham, had the "3-bedroom brick bungalow" rented the second day after his classified ad appeared. After 600 calls he stopped counting.

Home Rented the Second Day

Al Wesley of 1042 Floyd street, Birmingham, had the "3-bedroom brick bungalow" rented the second day after his classified ad appeared. After 600 calls he stopped counting.

Home Rented the Second Day

Al Wesley of 1042 Floyd street, Birmingham, had the "3-bedroom brick bungalow" rented the second day after his classified ad appeared. After 600 calls he stopped counting.

Home Rented the Second Day

Al Wesley of 1042 Floyd street, Birmingham, had the "3-bedroom brick bungalow" rented the second day after his classified ad appeared. After 600 calls he stopped counting.

Home Rented the Second Day

Al Wesley of 1042 Floyd street, Birmingham, had the "3-bedroom brick bungalow" rented the second day after his classified ad appeared. After 600 calls he stopped counting.

Home Rented the Second Day

Al Wesley of 1042 Floyd street, Birmingham, had the "3-bedroom brick bungalow" rented the second day after his classified ad appeared. After 600 calls he stopped counting.



SHADES OF 1971? If you lived in Birmingham that year, this photograph probably will recall the time when the city for the first time paved W. Maple through the Rouge Valley. However, the photo was taken only last week while the city is widening and repaving this portion of Birmingham's main east-west thoroughfare. So history has repeated itself in this instance—visually, at least. (Eccentric Staff Photo.)

Ask 2,000 Leonard, Alger Headline To Sign Up June 12 Rally Speakers For Voting

Nearly 2,000 Birmingham residents 21 years old and over could not vote as of May 26.

And to make sure they can, the Birmingham Republican committee Wednesday began a 10-day drive to get every eligible voter in the city registered—so that he or she can vote.

According to figures compiled by City Clerk Irene Hines, 9,724 Birmingham residents are registered.

But, in round figures gathered by the GOP committee, there are 11,500 persons who can vote—if all were registered. The committee also has names by Miss Hines that there are probably several voters whose names may have dropped from her lists for lack of voting or because of a change of address.

Committee block workers, under the direction of eight precinct captains, will canvass every home in Birmingham to be certain everyone is able to vote. The drive ends June 14.

THE DRIVE is aimed at the "lazy voter," said Committee (See CAMPAIGN, Page 6)

Detroit Firm To Come Here

Higgins and Frank, Detroit haberdashery and custom shirt firm, will soon open their first suburban store in the Wabcock building, Birmingham.

The Detroit and Chicago haberdashers will occupy the 36-foot by 60-foot building space presently used by Stroup's market.

Frank said that only labor shortages could prevent the company from operating in the new quarters by fall.

THE GRAND RAPIDS Store and Equipment Company has finished interior designs for the new store and will equip the building as soon as possible after the market is vacated.

Frank said that the interior "will be finished in contemporary design in keeping with the modern trend of life in the suburbs."

Leonard, Alger Headline June 12 Rally Speakers

Many acceptances have been received by the League of Women Voters from primary election candidates for national, state and county offices to appear here at the political rally June 12.

The rally will take place at the rear of Hill school, following an old fashioned political parade. In case of rain the rally will be held in Baldwin elementary school gymnasium.

Candidates running for governor of Michigan who will speak at the rally will be two Republicans, Donald S. Leonard, former head of the Michigan State Police, and Fred M. Alger, Jr., now secretary of state.

William Williams, the only candidate for governor on the democratic ticket will be in Machine Island on that date and it is improbable that he will be able to come.

Candidates for national offices who have accepted invitations are John B. Martin, Jr. (R) and Dr. Eugene C. Keay (D), both running for the U. S. senate nomination. Democratic candidate for senator Blair Moody will not be here as he said he should remain in Washington attending to business.

ODIN JOHNSON (D), Arthur Law (D), mayor of Pontiac, and Stanley Brown (R) of Franklin, candidates for U. S. House of Representatives, also will speak. Since Zigmund John Niparko (D) another candidate for the national house of representatives, is now serving in the Marine Corps and is not in this area, a substitute will speak for him.

Harry Henderson (R) and John W. Connolly (D), candidates for lieutenant governor, will be here as well as candidate for the state house of representatives including Fred G. Beardsley (R) district 1, Howard R. Estes (R) district 3, William S. Bloomfield (R) district 4, Donald E. Adams (D) district 4 and Harold Murphy (D) district 4.

Safecrackers Use Flag To Muffle Operations

Using an American flag and chair pads to muffle sounds, thieves tipped over a safe at the North Chevrolet sales room on South Woodward sometime over the weekend.

According to Detective Merlino Holmquist of the Birmingham police, the thieves stripped the combination from the safe door and made off with some \$200 in cash.

A quantity of checks were scattered about the office, Holmquist said, and nothing else in the building was disturbed.

Shopping Area Plan Is Hurried

City Acts On Parking Facilities

The reshuffling of present one and two-hour parking meter areas and the addition of new meters is contemplated by the city commission to improve parking facilities in the city.

The commission will hold a public hearing June 16 on new parking proposals recommended by Police Chief Ralph Moxley.

The proposals include the addition of two two-hour meters, abandoning of single parking on Woodward between Brown and George in favor of parallel parking and the installation of two-hour meters on each side of Bates between Merrill and Martin.

CHIEF MOXLEY'S report is in answer to instructions for a parking survey made by the commission on March 17.

One important point that the report disclosed was that many of the present two-hour meters were being tied up by short time parkers. Moxley suggested that the meters be changed mechanically so that they would only accept nickels to discourage this practice.

He also added that he is studying the possibility of obtaining dime meters for the two-hour zones.

If the recommendations are approved, the north side of Hamilton would be changed from one-hour meters to two-hour zones, six one-hour meters on Broward would be changed to two hours, and meters on South Woodward between Brown and Lincoln would be changed to two hours.

The one and two-hour meters on Martin between Henrietta and Bates would have to be reversed to accommodate some of the excessive parking demands in this area on weekends.

Masonic Fun Night

Another public fun night will be held at the Birmingham Masonic temple Saturday, June 7, under the sponsorship of the Masonic temple improvement committee. The program of entertainment and refreshments is being given at 8 p.m. with Birmingham gowns and blue jeans the suggested attire.

Quarton School Addition Is Discussed Before PTA

Under the sponsorship of Quarton PTA, a forum discussion of the needs of that school featured the May 28 meeting.

Martin Butzel, moderator, introduced Principal Grant Barber who spoke of future musical programs of the school and the move next year of the 8th grade into Baldwin high school. It was shown that this change would bring classroom averages down to from 27 to 23 per room. The present figure is from 27 to 43 pupils.

In speaking of the Dr. T. C. Holy report on Birmingham's schools, Butzel said he felt it should be used as "advisory material, not necessarily the pill to be swallowed to solve problems in our educational system."

3 Candidates Seek Places on B of E

About 10 per cent or less of the estimated 18,000 voters registered in the Birmingham school district are expected to help administer the district's more than a million dollars a year educational program during the next four years.

Candidates this year are incumbents Ross S. Campbell and William Spence, with Elaine Parnie, making her first bid for office.

Polls will be open from 7 a.m. to 8 p.m., in these approved precincts:

Precinct 1, Adams school—those residents of the district east of Woodward avenue.

Precinct 2, Quarton school—west of Woodward, north of Maple, east of River Rouge and north of Lincoln.

Precinct 3, Barnum school—west of Woodward and south of Lincoln, including Beverly Hills (formerly Southside No. 5) and Southside No. 1 districts.

Precinct 4, Franklin school—those residents in the former Franklin school district.

Precinct 6, Bloomfield Village school—residents of Bloomfield Village west of Cranbrook road, the former Bloomfield district 5.

Precinct 7, Walnut Lake school—residents of the former Walnut Lake district.

Precinct 8, Hamilton school—those residents of the board will convene at an adjourned meeting on June 12 for a canvass of the votes.

(See Page 3, Part 3 for map of the Birmingham school district and its several voting precincts.)

WILLIAM SPENCE, 30523 Greenfield road, Southfield Township, has served as a member of the Board of Education for one 4-year term and is now seeking reelection. He has had one child who has attended schools in the Birmingham school district.

Biographical data, background and experience: Age 43; graduated Birmingham high school, 1927; 24 years with the sales department, Detroit Edison Co., Bloomfield.

Served as a member of the Board of Education, Southfield school district No. 1, from 1943-46; member of Board of Education, Birmingham school district, 1948-1952.

Member, Birmingham Recreation Board; past president, Lions Club; past district governor, Lions of Michigan, District 11A; member of Lions club committee of Leader Dogs for the Blind; active in PTA.

(See ELECTION, Page 2)

Shopping Area Plan Is Hurried

Area Plan Is Hurried

The city commission and plan board have been pressed to take giant steps to get a proposed million and a half dollar shopping center under way on the north side of E. Maple between Hunter and Poppleton.

The commission Monday night set June 23 as the date for a public hearing on the rezoning of the residential to business A and the residential to business B and the plan board, headed by Carl O. Barton, pledged its support to the rezoning of the plan before June 30 if he is to build the center this year.

The National Production Authority has tentatively agreed on material needs for the project to be released in the second quarter of this year, the current quarter, and has set River Barton design rights for either the third or fourth quarters.

BARTON HOPES to have the market at the east end of the property in operation by fall if possible. The remainder of the 300-foot frontage is scheduled to be finished this winter.

Two problems that have to be surmounted before the center can be realized is the rezoning of the northern strip at the rear of the 140-foot deep building for parking and the question of traffic flow into and out of the center.

The developers have planned a limited access driveway and parking lane at the front of the building, allowing a 22-foot setback for the eventual widening of Maple to 44 feet.

Present plans call for an entrance on Poppleton between Knox and Maple. The plans also outlined an entrance exit to the access parking driveway on Maple. The plan board has suggested that the entrance be designed to prevent a delay in traffic flow on Maple.

BIRMINGHAM'S PERENNIAL TREE problem bothered the plan board. The rezoning of the property will fall when building is started and the planners urged the city to attempt to replant trees in the open lot at the front of his buildings. Barton had suggested that small trees be planted in the strip.

Initial plans for the development were drawn on a one-story basis, but demands from prospective tenants have forced Barton to design a three-story building at the west end of the center.

The development, if approved, would provide parking space for 265 cars. The parking area at the corner of Poppleton and Maple will accommodate 44 cars with the remainder of space at the rear of the property, with one-way driveway to and from the rear lot, and 40 cars at the front of the buildings.

THE COMMISSION has asked for recommendations from the plan board before the June 23 hearing, if possible. Planners already have promised quick completion of the rezoning.

Although Barton would not reveal the names of prospective tenants, he will negotiate a lease that a market, drug store, ladies' apparel shop and variety stores will occupy the development.

Bloomfield's Tax Rate Up

The Bloomfield city commission passed the 1952 fiscal year budget of \$120,950 at a public hearing Wednesday, May 28.

The budget includes operational expenses and a decrease in Bloomfield's share of the state sales tax will necessitate a 4-1/2% in the tax rate from last year's \$14 per thousand dollars of assessed valuation to a new rate of \$14.95.

Assessed valuation for the city has been set at \$5,344,350.



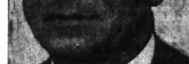
MRS. PARNIE



ROSS S. CAMPBELL



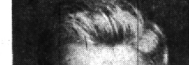
WILLIAM SPENCE



WILLIAM SPENCE



WILLIAM SPENCE



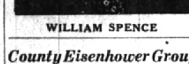
WILLIAM SPENCE



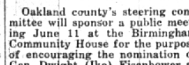
WILLIAM SPENCE



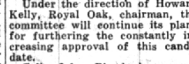
WILLIAM SPENCE



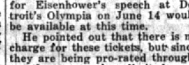
WILLIAM SPENCE



WILLIAM SPENCE



WILLIAM SPENCE



WILLIAM SPENCE



WILLIAM SPENCE

County Eisenhower Group Meets Here On June 11

Oakland county's steering committee will sponsor a public meeting June 11 at the Birmingham Community House for the purpose of encouraging the nomination of Gen. Dwight (Ike) Eisenhower as Republican presidential candidate.

Under the direction of Howard Kelly, Royal Oak, chairman, the committee will continue its plans for furthering the constantly increasing approval of this candidate.

Colin John, Birmingham member of the committee, said tickets for Eisenhower's speech at Detroit's Olympia on June 14 would be available at this time.

He pointed out that there is no charge for these tickets, but since they are being pre-rated through out the state, only a limited number will be available for local residents.

ANSWERING QUESTIONS presented from the floor, the group was told that there would be more than 60 kindergarten children next year from north of the city.

The annex would be similar to the first Pierce school addition—four grade school on a one-acre lot on the second floor. This was a part of the original plan so the present heating system would be sufficient to carry the load.

The Holy report estimated a cost of \$447,000 for a new 12-room grade school, without land costs. The annex to Quarton is estimated at about \$400,000.

The immediate needs for the entire district were outlined as the rezoning of new sites, improvements, Troy (addition), Bloomfield Village addition and the new Quarton school.

The change-over of Adams to a junior high school and a new elementary school in that area also were listed.

The final question drew the attention of the group, which numbered 559 children. With the new wing it would be able to take care of 600 pupils.

ANSWERING QUESTIONS presented from the floor, the group was told that there would be more than 60 kindergarten children next year from north of the city.

The annex would be similar to the first Pierce school addition—four grade school on a one-acre lot on the second floor. This was a part of the original plan so the present heating system would be sufficient to carry the load.

The Holy report estimated a cost of \$447,000 for a new 12-room grade school, without land costs. The annex to Quarton is estimated at about \$400,000.

The immediate needs for the entire district were outlined as the rezoning of new sites, improvements, Troy (addition), Bloomfield Village addition and the new Quarton school.

The change-over of Adams to a junior high school and a new elementary school in that area also were listed.

The final question drew the attention of the group, which numbered 559 children. With the new wing it would be able to take care of 600 pupils.

ANSWERING QUESTIONS presented from the floor, the group was told that there would be more than 60 kindergarten children next year from north of the city.

The annex would be similar to the first Pierce school addition—four grade school on a one-acre lot on the second floor. This was a part of the original plan so the present heating system would be sufficient to carry the load.

The Holy report estimated a cost of \$447,000 for a new 12-room grade school, without land costs. The annex to Quarton is estimated at about \$400,000.

The immediate needs for the entire district were outlined as the rezoning of new sites, improvements, Troy (addition), Bloomfield Village addition and the new Quarton school.

The change-over of Adams to a junior high school and a new elementary school in that area also were listed.