

Red-Ripe-Fresh from the Gardens... And Are They Good!

U. S. NO. 1 FANCY

HOME GROWN



Tomatoes



The Finest Michigan Tomatoes of the Season!

2 lbs. 29¢

- BREAK O'DAY SWEET CORN Fresh Picked **49¢**
- FRESH FLORIDA LARGE LIMES Full O' Juice 200 Size **6 For 19¢**
- MICH. CULTIVATED BLUEBERRIES Pint **29¢**

KOOL-KRISP HOME GROWN PASCAL CELERY
 Jumbo 24 Size Stalks **25¢**

- SEALTEST or BLUE RIBBON ICE CREAM All Flavors Half Gal. **97¢**
- CALIFORNIA MOUNTAIN BARTLETT PEARS **2 Lbs. 29¢**
- U. S. No. 1 GOLDEN RIPE BANANAS **2 Lbs. 29¢**

TOP FROST Fresh Frozen Concentrated ORANGE JUICE
 2 6 Oz. Cans **29¢**



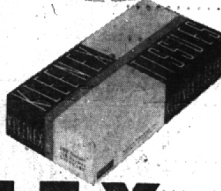
LIBBY'S or CAMPBELL'S Tomato Juice
 GIANT 46-OZ. CAN **29¢**

- SWIFT'S CORNED BEEF 12-Oz. Can **45¢**
- DOMINO PURE CANE SUGAR 10-Lb. Bag **93¢**
- BALL or KERR MASON JARS Quart Size Case of 12 **79¢**
- DON DE' COFFEE * DRIP • PERK • SILEX 1-Lb. Vac. Can **77¢**
- WELCH'S GRAPE JUICE 24-Oz. Bottle **39¢**



TOILET TISSUE
 3 1000 Sheet Rolls **29¢**

- TOP FROST FRYERS Fresh Frozen 1-Lb., 14-Oz. Pkg. **\$1.29**
- GRAND DUCHESS STEAKS Fresh Frozen 11-Oz. Pkg. of 4 **79¢**
- TOP FROST GREEN PEAS 12-Oz. Pkg. **45¢**
- TOP FROST SLICED STRAWBERRIES 12-Oz. Pkg. **33¢**



MUELLER'S MACARONI or SPAGHETTI
 2 8-Oz. Pkgs. **21¢**

- BULL DOG SARDINES In Oil or Mustard **12c**
- HELLMAN'S MAYONNAISE Big Quart Jar **68c**
- STOKELY'S APPLE SAUCE No. 303 Can **14c**
- STUFFED OLIVES MARIO'S Queen No. 12 8-oz. Ice Box Jar **37c**
- MUSHROOMS FIRST STATE — 4-oz. Can Pieces and Stems **23c**
- FRENCH DRESSING MILAN'S 1896 8-oz. Bottle **34c**
- DILL PICKLES AUNT JANE'S Pony 16-Oz. Jar **28c**



BANQUET Whole Cooked Chicken
 GIANT 4 1/2 LB. CAN **\$1.59**

KLEENEX FACIAL TISSUES
 3 300 Count Boxes **69¢**

STAR-KIST TUNA FISH Chunk Pak For Salads **29¢**

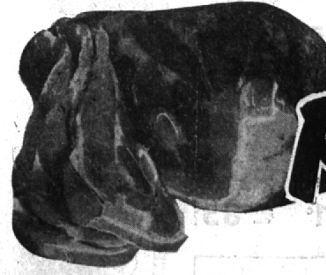
- HABITANT PEA SOUP 15-Oz. Can **11¢**

Sta-Flo Pays For Your 1st 2 Bottles of this "Easy Way" liquid starch. Bluing and ironing aid added. "Fresh Outdoor" scent. **2 Quart Bottles 46¢**

- KRUN-CHEE POTATO CHIPS 12-Oz. Bag **69¢**

- CREAMERY BUTTER Wrigley's Brand Double Wrapped — 1-Lb. Print **75c**
- BRICK or MUENSTER Fancy Wisconsin Cheese Piece or Sliced **55c**
- LONGHORN CHEESE Fancy Wisconsin Mello — Tasty **59c**
- COTTAGE CHEESE Wrigley's Creamed 16-ounce Carton **21c**
- SHARP CHEESE PINCONNING Medium Tasty and Tangy **63c**
- TODDY CHOCOLATE DRINK 3 for 32c **Each 11c**

ARMOUR'S STAR Fancy Sugar Cured **Hickory Smoked**



Picnics

5 to 7-Lb. Average! **39¢ lb.**

- SLICED BACON Hygrade "Sweet'nized" Lean - Flavorful **59c**
- CANNED HAMS Plumrose Brand 2-Lb. Cooked, Ready-to-Serve Can **\$2.39**
- SKINLESS FRANKS Mickelberry - Glendale or Paschke Mich. Grade "1" **59c**
- GROUND BEEF Fresh - Lean - Fine for Hamburgers or Meat Loaf **63c**
- RIB ROAST BEEF "Naturally Tender" 7-Inch Cut Graded Prime or Choice **79c**

KINGAN'S Sugar Cured Hickory Smoked SLAB BACON
 6 to 8-Lb. Avg. Slab **43¢ lb.**

KRAFT'S DELUXE Cheese Slices
 AMERICAN or PIMENTO **29¢**
 8 Slices in 8 Oz. Pkg.



SEE AND HEAR—"THE CISCO KID" on WXYZ-TV, Channel 7, Every Friday at 7:00 P. M. and on Radio—STATION WXYZ, EVERY TUESDAY from 7:00 to 7:30 P. M. Also See "THE LADY OF CHARM" on WXYZ-TV, Channel 7, from 11 to 12 Noon, MONDAY, WEDNESDAY, THURSDAY and FRIDAY!

635 SOUTH WOODWARD ★ ★ ★ **Open Thursday, Friday and Saturday 'Til 9 p.m.**