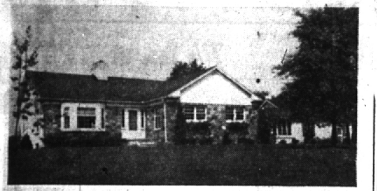


BEGINNING JULY 8TH
WE WILL CLOSE
AT NOON WEDNESDAY
DURING JULY AND AUG.
BIRMINGHAM HARDWARE
152 N. Woodward

ELECT STANLEY M.
BROWN
REPRESENTATIVE TO UNITED STATES
CONGRESS
13th DISTRICT OAKLAND CO.

LET US DO YOUR
BLUE PRINTS - WHITE PRINTS
PHOTOSTATS AND TRANSPARENTS
BIRMINGHAM BLUE PRINT
AND SUPPLY COMPANY
W. S. McALPINE
636 SO. WOODWARD
OPPOSITE WIGLEY'S
Open Weekdays and
Saturday Forenoon
PHONE
MI 4-3738

**ON A KNOLL
OVERLOOKING STREAM**



In the country near Birmingham
The kind of brick and stone ranch home you yourself would build. Attractively designed, of quality construction, in a beautiful location.
Large living room, separate dining room.
Most attractive pine-paneled kitchen and breakfast room.
Two large bedrooms, two baths.
Porch plus screened and gassed breezeway.
Full basement—forced air heat.
Mercury switches—copper plumbing.
Carpets included.
\$33,500
Serious minded home-seekers, eager to buy at the right price will do well to inspect this home today.
WALSH, JAMES & WASEY Co.
REALTORS
431 S. Woodward Avenue, Birmingham
Midwest 4-6500



IT WON'T BE THIS DESERTED TOMORROW, SATURDAY AND SUNDAY
Swings and slides, tables and stoves, games and golf course are ready. (Eccentric Staff Photo)

Springdale Ready For Holiday

By JACK BERGERS
Springdale park stands ready to serve the picnic lovers who are expected to take advantage of its fine facilities this weekend.
Superintendent Robert Fauteck has had his crew busy all week checking play equipment and seeing that all available tables and stoves are in tip-top condition.
The park, located on Springdale road near the Grand Trunk right-of-way has everything to please

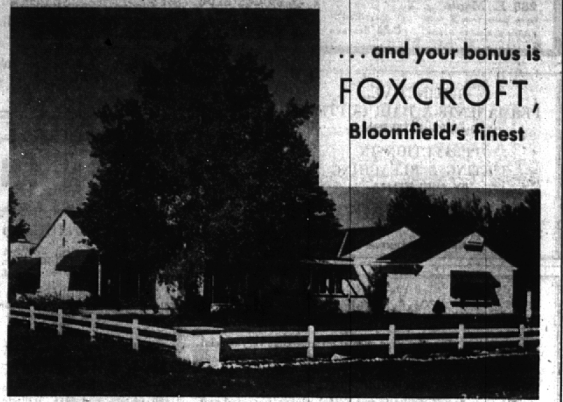
**D & H RICHMAN
EXCAVATING
CONTRACTORS**
Call Empire 3-3110
Free Estimates on
✓ SEWER LINES
✓ WATER MAINS
✓ BASEMENTS
✓ FILLING and
GRADING
All Modern Equipment

the outdoor lover. There are swings, slides and merry-go-rounds for the children. A tennis court and nine-hole golf course will attract the men in the family.
Mom will find the stoves and tables standing ready to help her prepare the picnic meal.
AND BEST of all there are cool shade trees and grassy areas for the folks who just like to relax.
Fauteck points out that to eliminate overcrowding, the park is open to Birmingham residents only. This rule was put into effect last year by the city commission to insure residents that this was their park and for their enjoyment.
The park is open from 8:00 a.m. to 8:00 p.m. during the week, and opens 7:00 a.m. on Saturdays and 6:30 a.m. on Sundays and holidays.
With crowded highways over the July 4th weekend, Springdale park would be a fine place to hold that family outing without the danger of holiday traveling.
Attends ROTC Camp
James W. Manning, son of Mrs. William H. Manning, 843 Puritan, and student at the University of Michigan, is attending the Quartermaster Reserve Officer's Training Corps summer camp at Fort Lee, Va.

**Walled Lk. Park Plans
Holiday Fireworks Show**
Holiday fireworks displays during the evenings of July 3 and 4 will be featured at Walled Lake Park.
Two large shaded picnic gardens provide outdoor dining space for groups of any size. The park also provides baseball diamonds and other athletic facilities.
Saxophonist Teddy Phillips and his orchestra will provide music for dancing. The band will feature vocalist Lynn Hoyt, Jim Green and Earl Henry and the Phillip-Aires ensemble.

Don't Miss The
AUCTION SALE
EVERY TUESDAY
7:00 P.M.
At the L & S Auction House, 3345 Auburn Road, 1 mile east of Auburn Heights on M-59.
Merchandise of all kinds, new and used furniture, appliances, radios, TV sets, tools, antiques, produce and eggs.
Also will sell anything you have for sale: Phone FE 7-0783 or Olive 2-6711.
Ray Warner
Auctioneer.
Complete Stock of new furniture at bargain prices. TERMS. Open 6 days a week, 9:30 to 5:00 for retail sales and to receive consignments. For special announcements listen to our radio broadcast over WCAR between 4:30 & 5 P.M. Tuesday, Thursday and Saturday.

simple arithmetic tells you this is
the BEST BUY of the year . . .



. . . and your bonus is
FOXCROFT,
Bloomfield's finest
Figure it this way:
What will you pay to duplicate this home at today's price? What is the cost of the lot . . . the lawn, fencing, landscaping? Storms, screens, awnings . . . expensive items that are included? And, this house is modern, up-to-the minute in every detail. Built in 1950 it offers you the equal of any home constructed today. Three large bedrooms; bath with stall shower. Living room; dining ell; large kitchen with breakfast space. Enclosed covered porch, and 2-car attached garage.
The Price:
Why not call us today—or better still let us show you this exceptional home. The low sale price we quote will surprise you.
BENJAMIN & STEPHENS, INC.
259 S. Woodward
MI 4-3232
REALTORS
OPEN EVENINGS
Birmingham, Michigan
JO 4-5728

BLOOMFIELD VILLAGE



759 HALFMOON DRIVE

Among stately trees and mature landscaping, on a generous 140' lot. This pleasing colonial is close to Bloomfield Village school, on a winding, little-traveled drive.
The living room has a fireplace; there is a separate dining room with bay; a den and first floor lavatory; four bedrooms up.
Storms and screens, Westinghouse disposal unit and all tacked-down carpeting are included at only \$34,900. A real value!

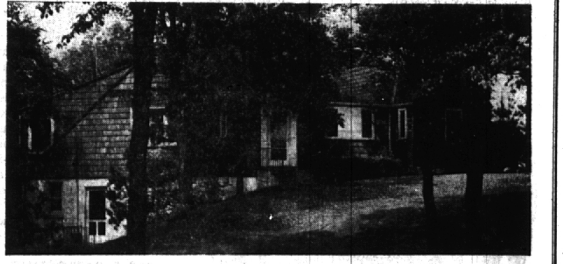
**WATT, MANUEL
& SNYDER, Inc.**
Realtors
298 S. Woodward
Midwest 4-6300

WALTER A. WILSON and SON
Custom Builders
Let Us Figure The Plans
For Your New House.
• REMODELING • BREEZEWAYS • GARAGES
PHONE MIDWEST 4-8078



GIL GOODE JOHN CHIERA
"Remember when we used to say, you can see the hills on a clear day."
It is so true. Many a dream home has been suddenly ruined by the building erected next door. If your home, for any reason, has lost its charm . . . list with us today. We have all kinds of eager buyers and strangely enough, your present "view" may appeal to them. Call us.
GOODE-CHIERA CO.
Realtors
750 So. Woodward, B'ham
MI. 4-8200

ENCHANTING!



Unique in design, deftly set into its natural hillside setting, this unusual home is outstandingly attractive. Those who want the quiet beauty of its magnificent setting and the ingenuity of a home designed to a streamside contour will find these qualities at their best.

UPPER LEVEL . . .
Charming Colonial Living Room . . . Inviting Sun Room with folding glass windows and glorious views of the winding brook below.
Three "cool-as-cool-can-be" Bedrooms . . . Tiled Bath and extra Lavatory . . . walk-in closets.
LOWER LEVEL . . .
A gourmet's Kitchen . . . Full Dining Room . . . Large Cold Room
Sun deck and Promenade facing the stream . . . another Bath here too. Three car garage.

One of the most interesting and peaceful scenes in the area . . . a cascade of rock garden to the water . . . seclusion near the conveniences. Proximity to all schools . . . low taxes. Inspect it today!
CALL
MAX BROOCK INC.
REALTORS
ESTABLISHED 1925
300 S. Woodward Ave.
Midwest 4-6700