

Cool, Comfortable and so practical for SUMMER

- Cotton Cord Slacks **\$7.50**
- Cotton Cord Play Shorts **\$5.00**
- Rayon Cord Play Shorts **\$7.50**
- Rayon Tropical Slacks **\$10.00**

YOUNG'S OF BIRMINGHAM
203 PIERCE ST. OPEN FRIDAY EVENINGS
FRENCH, SHRINER and URNER Shoes

Call Midwest 4-1100 to place an Eccentric Classified Ad.

SPECIAL PURCHASE

FAMOUS MAKER'S
NYLON AND LASTEX

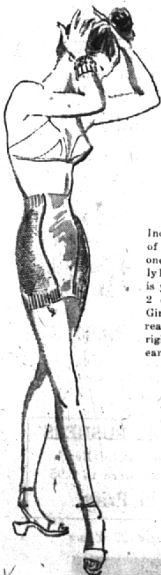
Reg. to \$5.00

\$2.65

Reg. to \$6.95

\$3.63

Sizes—Petite, Small, Medium, Large
Colors—White, Pink, Black
Slightly Irregular



Included in this sale are all of your favorite styles from one of our famous nationally known manufacturers. This is your opportunity to select 2 or 3 Girdles and Pantie Girdles at a saving which is really worthwhile. See them right away and select yours early.

\$3.63



\$2.65



\$2.65



\$3.63

\$3.63

Young Germans To Visit County

Several Oakland county families will be host to 10 German students next month. Each student will be taken into a home as a regular family member for one month before he begins his American schooling this fall.

Mrs. Edward S. Reid of Birmingham will coordinate the Oakland county program. This program is part of an "Experiment in International Living" which has been in existence for over 20 years.

The six boys and four girls are among 200 students picked from more than 2,000 applicants. They were chosen for their knowledge of English, general scholastic records and individual personalities.

The Oakland county families participating will be Mr. and Mrs. Paul Averill, Mr. and Mrs. Colin Campbell, Mr. and Mrs. Edwin V. Clarke, Mr. and Mrs. Peter B. Loomis, Mr. and Mrs. Lawrence Martz, Mr. and Mrs. Robert S. Plexico, Mr. and Mrs. Edward S. Reid, Mr. and Mrs. Charles W. Renfrow, Mr. and Mrs. William W. Williams, Mr. and Mrs. Urban W. Woodhouse, and alternates, Mr. and Mrs. Robert N. Woodruff, and Mr. and Mrs. Max M. Roensch.

GLENN WING POWER TOOLS

- Atlas • Delta
- Porter-Cable
- Shopsmith
- DeWalt Saws

1437 SOUTH WOODWARD
Five Blocks North of 16-Mile Rd.
BIRMINGHAM, MI 4-6444
Daily 8 to 6:00—Fri. 8 to 8:00

NATURE NOW

SUMMER IN THE MEADOW

Now that the sun has passed its summer solstice, the daylight hours are at their longest and brightest. Spring time flowers in shady woodlands have come and gone, and their color and beauty have been shifted to the meadow and roadside.

Meadows are important plant communities. Plants succeed each other in various associations from the lowest aquatic types to our climax forests of beech and maple. The meadow represents a vital intermediate stage in this trend. A wet meadow will in time become forested with water loving trees such as willow, aspen and spruce. Where drainage is better it will lead to oak-hickory and finally to beech-maple associations. These changes require hundreds of years and are scarcely visible in one short life span.

Wet meadows support a diversity of plant life. Sometimes only 15 or 20 varieties are present, but in one such area, near Clarkston, 93 have been verified.

The lush green carpet of these low areas is made up of sedges, rushes and grasses, punctuated with bright flowers familiar to all. These include yellow, buttercup, aster, daisy, jewelweed, bonset, blazing star and swamp milkweed.

Occurring more rarely are Michigan lily, fringed and boldenian, grass of Parnassus and such orchids as the showy and small yellow lady's slipper. Because the wet meadow has complete exposure to sunlight and

abundant moisture it presents one of the richest and most varied plant communities in our state.

The dry meadow, which occupies higher and better drained soil is like an ever-changing tapestry all until it is faded by October's frost. Such trees as box elder, aspen and white ash sometimes become established. Milkweed, black-eyed Susan, chickory, Queen Anne's lace, sweet clover, bergamot, hawkweed and yarrow, make of their bloom a gay summer parade. The highly composite family, including the thistles, goldenrods and asters flourish and spread over these areas. Their ability to produce hundreds of seeds in each flower-head, each one provided with its own seed dispersal mechanism, leads many botanists to believe that this family may eventually take over the flora of the future.

The song of meadow birds is one of the loveliest and most beautiful. The meadowlark, the bobolink, the quail and the song sparrow nest on the ground in the shelter of tall grasses. Eggs and young are so vulnerable to their many predators that these birds lay larger clutches of eggs to allow for the many that will be destroyed.

Here in late April the hen meadowlark fills her nest of dead grasses, 10 to 14 earth-colored eggs. Here she mothers her brood of chicks through the summer months. Here the hunter comes to fill his game bag when autumn stalks the land.

The marsh hawk flies low over the meadow, sailing back and forth above the sea of waving grass, a wary eye turned to the movement of snake, frog or rodent.

Here the little field mouse lives her prolific life; in spite of a host of enemies. Her daylight hours are spent tunneling burrows through the grass to her feeding grounds. Small as she is, her abundant numbers enable her to destroy five million tons of hay in the United States each year.

THE MEADOW is the home of herbaceous plants which, when eroded by frost, rot, to rotstock or bulb or to the encased served where their pattern is preserved until it is called forth by another springtime sun.

These plants are the climax of a creative force which began with a single living cell, cradled in water in an age so long passed that we cannot comprehend its antiquity. Neither can we understand today the process by which it has survived these eons of time to reach the colorful diversity which displays in any summer meadow.

Lucky is the person whose life experience has at one time or another been linked to a favorite meadow. To such a one, the day-lark song and the freshness of morning. The heat of noonday will forever be a part of the hum of bees busy about their tasks among fragrant heads of clover. Twilight will be more than a time of approaching darkness; it will be times be lighted with the glow of only the meadow mouse as stir in her little tunnel of grass.

PLAY it Safe!



GRASS FIRES
If you have a vacant lot next door to you or at the rear of your home, that has grown high with weeds, every precaution should be taken when burning papers, rubbish, etc., adjacent to it.

With the dry spell we are currently experiencing, the danger from grass fires is greatly increased. Grass and high weeds should be cut and raked as clean as possible, especially away from garages, out-buildings and shrubbery. With a slight breeze a grass fire can travel further and do much damage in the time it takes to reach the fire department. If you have grass or rubbish to burn, you should first come to the fire permit and apply for a permit. The men on duty will tell you if you are in an area where burning is permissible and if wind conditions are right for burning, and if so, issue the permit.

DON'T BURN your own or your neighbor's garage or shrubbery. **PLAY IT SAFE!** Check with the fire department for a permit and approval, then survey the area to determine that should the fire get away from you, would it cause any damage. A garden hose and bucket would be of great assistance in controlling a grass fire until the fire department arrived, if you need them.

Have the charged hose handy, with the water shut off at the nozzle, prior to starting a grass fire, then, if necessary, you can bring it quickly into play. Remember "AN OUNCE OF PREVENTION IS WORTH A POUND OF CURE." BIRMINGHAM FIRE DEPARTMENT

NEED SOMETHING FOR YOUR HOUSE? Then locate it by reading or using the Classified Ads in The Eccentric each week.



Localite Promoted At GMC Division

Richard C. Woodhouse 788 Grassfield court, former assistant general truck sales manager for the GMC Truck and Coach Division, has been appointed general sales manager, according to Roger M. Krys, vice president of General Motors and general manager of the division.

Woodhouse succeeds J. E. Johnson, who will handle special assignments for the general manager. Woodhouse has been in the sales department of GMC Truck since 1950 when he was regional sales promotion manager.

In 1939 he was promoted to manager of the GMC sales promotion department and in 1945 was appointed regional sales manager for the Southwest, with headquarters in Dallas, Texas.

In 1949 he was called back to the home office to become assistant general sales manager.

Victor Z. Brink Elected Head of Accountant Group

Victor Z. Brink, 1011 Puritan, has been elected a director of the Detroit office of the National Association of Cost Accountants for the year 1952-53. He will have charge of the educational program during the coming year.

Brink is assistant controller of the Ford Motor Co. He has been associated with Ford for the past four years, having served as professor of accounting at the University prior to that.

HE HAS BEEN very active in the Internal Auditors Association and rose to national president of that organization in 1949-51. He is also the author of many articles on accounting for the Journal of Accountancy and wrote the first published book on internal auditing.

TYPEWRITERS REPAIRED

New and Rebuilt Typewriters For Sale—Rentals
Birmingham Printing
369 EAST MAPLE • MI 4-4740

STOP CRABGRASS

with Scotts anti-Crabgrass compound
SCUTL



Another lawn care product by the makers of Scotts Seed.

SCUTL has met and defeated Crabgrass on thousands of lawns in the past five years. Simply scatter SCUTL granules over the lawn with spreader. Crabgrass is doomed, good grass unharmed.

Three or four SCUTLings at weekly intervals save your lawn from Crabgrass at a modest cost. Price per single treatment: 400 sq ft - 79c 1250 sq ft - \$1.95 3500 sq ft - \$5.85

SCUTL SPREADERS Provide quick, lawn weeding, feeding or seeding. Sturdy steel construction, rubber tired. \$7.95-\$12.50

Huston Hardware Co.

OUR FORTY-SECOND YEAR
206 N. Woodward
Midwest 4-7330
"The Store With The Upstairs Show Window"

In Error
It was erroneously stated in the July 3 edition of The Birmingham Eccentric that Cpl. William F. Cates is the fiancé of Carolyn Walters, 768 Elm. The two are married and The Eccentric mistakenly used Mrs. Cates' maiden name.

"It's From Leon"

For that very special gift for that very special person you need look no farther than Leon's.

Here you will find a wealth of welcome suggestions... hosiery, handkerchiefs, French perfumes, domestic and French gloves, imported and simple or sumptuous as domestic handbags... simple or sumptuous as your purse may dictate. Best whatever, the gift you know will be the more appreciated because "it's from Leon."

LEON
147 Pierce Birmingham, Michigan MI 4-0700-01

Anticipation Shower Gift!

Ideal gift for a brand-new baby, the brand-new Cuddle-Nest! Luxuriously ruffled quilted rayon satin, lined and backed with rayon satin, too, it has a plastic-covered cotton-filled inner cushion that sponges clean in a jiffy. Cuddle-Nest keeps baby pretty and protected traveling or at home!

THE NEW Cuddle-Nest®
\$4.95
PINK, BLUE, MINT-GREEN, YELLOW or WHITE

LITTLE FOLKS SHOP

175 WEST MAPLE BIRMINGHAM
OPEN FRIDAY EVENINGS TILL NINE

there's no "if" in the lift of *flair* bras

Flair's satin elastic design, even to the undercup, gives constant uplift. Never binds, never hampers—leaves you action-free. Has GOSSARD'S inside, outside perfection—flawless fit.

Gossard

Both topped with unadorned rayon marquisette. White or D. C. cups. To plunge or not.

\$3.95

The Glassford Shop

Personalized Service By Graduate Costeaters
Store Hours: Mon. thru Sat., 9 A.M. to 5:30 P.M.
135 Pierce MI 4-5244

RD SHOPS

Smart Feminine Apparel

142 W. Maple—Birmingham
Branches in Ferndale—Royal Oak—Mt. Clemens

OPEN FRIDAY EVENING TILL NINE