

Or About 12 Times Around the World

By ALICE E. MORGAN

A trip of more than 300,000 miles is considered quite a jaunt, and it is usually conceded that it takes a person quite some distance from home.

However, there is a group of people who have traveled that far and never left home, so to speak. They are the men and women who daily use the various self-propelled vehicles owned by the City of Birmingham.

They are the fire and police departments, city nurses, health inspectors, DPW men and so on. A recent check shows about 55 of these city owned vehicles in the "motor pool," including eight

administrative cars, 11 heavy trucks, 14 pick-up trucks, 2 packers, graders, loading machines, bulldozers, shovels, sweepers, small tractors and rollers.

NORMAN KNAPP, DPW superintendent, pointed out that the mileage figure would be considerably higher save for the fact that sweepers, graders, loaders, bulldozers, shovels and rollers are figured on a basis of work hours

rather than distance traveled.

Mileage records for the administrative cars totaled 47,000; heavy trucks, 62,550; pick-up trucks, 83,550; packers, 12,000 and engineering department suburban pick-ups, 8,000.

Fire trucks traveled 15,156 miles while police cars clocked up 191,460 during the year. The police department motorcycle registered 5,726 miles, operating almost entirely in the business areas above. Police mileage is included in the motor pool figures.

THE OPERATION of these vehicles required 65,696 gallons of gas, including several gas-driven

pieces of equipment which are not classified as "traveling" equipment.

Happier Futures For City's Pets

There is an old expression which says: Every dog has his day.

If the efforts of area residents, spurred on by Mrs. William G. Ferguson of Bloomfield Hills and Mrs. Karl Koehler of 275 E. Maple, the dog will not only have his day but will have things much easier for all his days.

Furthermore, their efforts are not being aimed solely at dogs, but at all pets—cats, rabbits, birds and the wild animals as well.

Plans are underway for the organization of Birmingham children into junior branch of the Oakland County Humane society.

"If we teach the children how to treat animals," Mrs. Ferguson said, "we will be able to create greater joy for both. The animals will not become vicious through mishandling and the children will be able to get greater enjoyment from their pets. That is our aim—a broad one, but very simple once we really get started at it."

MRS. FERGUSON said that a short time ago a pet show was held by the youngsters of the Hickory Grove school. All who brought pets to the event were made junior members. Three compositio winners were awarded puppies for their writings on kindness to animals.

Other plans, still in a development stage, will include a program whereby owners will have full information on the various steps necessary to locate lost animals.

Mrs. Ferguson and Mrs. Koehler have been assured of full police cooperation once the final details are ironed out. The plan will eliminate many slips between owners, the police and the dog pound which now cause confusion for all.

Mrs. Koehler, meanwhile, continues acting as Birmingham's unofficial "Canine Skip Tracer."

According to Mrs. Ferguson she had an uncanny knack of locating a lost pet, especially dogs.

"ANIMALS instinctively like Mrs. Koehler, and trust her," Mrs. Ferguson says. "She can get strange dogs to come to her without any trouble at all. Some how they seem to know she will not harm them and in no time at all they are at her side, licking her hand."

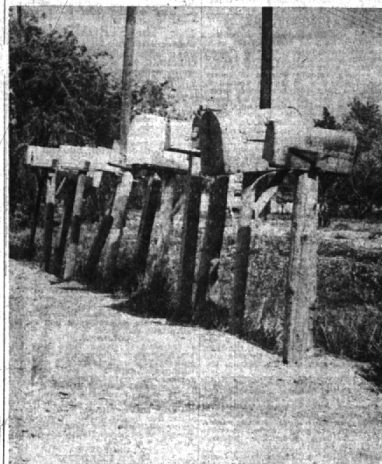
"I know of several persons whose pets have been lost and who have failed in numerous attempts to locate them. They have asked at police headquarters and determined that the dogs had not been picked up."

"Mrs. Koehler would hear about it, get a description of the animal and then, within a day or two, very calmly call the owner and tell him where he could get his dog. It's uncanny!"

July 10, 1952 THE BIRMINGHAM ECCENTRIC Page 7



A RURAL MAIL CARRIER'S DREAM on any gloomy Monday morning is to be greeted by a neat, level, and easily accessible mailboxes such as the ones pictured above. The carrier covers far-flung routes and well-constructed mail box installations are a "must" for him if he is to provide rapid distribution of mail.



... BUT HIS SPIRITS DROP WHEN HE ENCOUNTERS a row of letter holders such as these. This stop will take a little longer for him. Out-of-line boxes make him wish his arms two feet longer. These pictures were taken in Troy township... they could have been taken in any township in the area, in the county, or in the state. Irregular stretches of mail boxes are not only tough on your mailman, they also are an eyesore to the rural areas. (Eccentric Staff Photos)

WE HEARD IT SAID BY—

MRS. EDWIN V. CLARKE, 792 Willitts; "Oakland County does not have a night court and there is need for one. On the basis of the fact that this is an industrial and growing county, the average man who comes into court is a day laborer or working man and he loses a day's wages because there is no night court where he can appear."

★ Smile a Minute . . .

It was with some misgiving that the young man was being taken "to meet the family." The girl assured him that she had told father he was an artist and that the news had been received with great joy. "Are you sure he won't object? Most parents think all artists starve in attics," the young man questioned. "Oh, no! Father's delighted that you are an artist," she replied earnestly. "The last boy he tried to throw out was a professional football player!"



BIGGER AND BETTER—Previously scattered in four different buildings, the U. S. Embassy in Mexico now occupies this modern 17-story structure on the Paseo de la Reforma in Mexico City. The only U. S. Embassy in the world larger than this one is in England.

A Message

To Our Friends and Neighbors
from DEAN COFFIN, Inc.
348 EAST MAPLE
BIRMINGHAM

Once upon a time a sweet and lovable, hard-working Housewife put in four solid weeks of serving Economy Cuts of beef to her loved ones. She almost got by with it. The Fourth Week was a Terror. On Thursday night George let it be known in a loud voice that Sweetie Pie was all through paying 84 cents a pound for Ground Beef that comes out of the pan looking like case-hardened marbles. He ordered a steak, two inches thick.

She got the steak. It cost \$1.28 a pound. Unfortunately, the Little Bride drew a porterhouse that had been on display for several days. Maybe it hadn't been properly aged and hung in a cooling room. It was tough, and it had the taste quality of a 1945 Firestone Re-Tread.

George Blew a Fuse, Sugar Face wept, and the kids figured the franchise was about to be cancelled. So they cried, too. The night was hot, and so was George. It was a disturbing example of Domestic Infelicity.

George came to our office at 348 E. Maple a few days ago. We explained to him that a lot of folks are feeling pretty grim about the same subject, which is why this new business of ours is Roaring right along. We now have many local families on this new system of buying meat, all of them with a four-to-six months supply of beautiful beef in their freezers, beef that has been properly aged . . . sold at a quantity discount . . . and delivered to the freezers we install in people's homes.

We told George that when you become a Dean Coffin, Inc. freezer customer, we send a trained Food Adviser to your home. She helps the missus buy . . . among other things . . . the right kind of beef carcass for your individual taste and appetites. She suggests ways of cutting it, and cooking it. Then, our locker plant orders that particular carcass of beef for you. It's hung in a cooler equipped with sterile lamps to eliminate bacteria and mold in the air. When it's properly aged, they take it out and cut it into steaks and roasts and ground beef JUST THE WAY YOUR FAMILY WANTS THEM CUT.

It's Quick-Frozen, then delivered to your Ben-Hur or Sub-Zero freezer. Every package is labelled with your name, the date it was frozen, and what's in the package. Of course you know that Fast Freezing tenderizes meat, so that months later when the Wage Earner caresses that steak with a fork, it cuts like butter.

We are proud of the beef local families are getting on this freezer-and-frozen food method of buying. It's our way of helping you get maximum economy, satisfaction, and better living as a result of owning a freezer. And the quantity discount on prices are available to you not once, not for a year, but as long as our food source stays in business . . . and they'll be in business for a long, long time.

All this talk about steaks makes you stop and think. Why not start eating better beef, and at a lower cost, than you ever have before? Hmmm? Well, why not?

Cordially,

Dean Coffin Inc.
Freezers & Family Food Plans
348 E. Maple
Midwest 4-8500

See TIDE magazine, May 9:
"The home freezer-frozen foods sales tie-up is particularly logical. It offers housewives a way to combat high food costs. Housewives can look forward to a new way of life via such plans: less shopping; fewer bundles; easier work; lower prices; more convenience."

Wheel This Table Outside For A Cool Snack or Use It Anywhere—

See it — you'll want it!
COSCO "Rollaway"
Utility Table



Use it in the kitchen, laundry, nursery or bath. Big 17" x 24" top, two roomy shelves for appliance storage. Chromium legs with 3" casters. All-metal construction. Baked-on enamel finish in choice of white, red, yellow, blue, green. Also available with single shelf, rounded gliders instead of casters.

This model \$7.95 others up to \$23.95

DOW WEED KILLER

This package makes 6 gals. covers 600 sq. ft.

ONLY \$1.00 pkg.

SCREEN DOOR GUARDS

Anodized (non rust) steel

\$2.85 ea.

Aluminum . . . \$3.65 ea.

Seal-Dri WADERS

Super 20 gauge . . . \$10.95 pr.

SEE THIS . . .

Our new bait display—flips a switch and hundreds of baits pass in review for your choosing. All the old standbys as well as many new proven fish getters.

the
McBRIDE HARDWARE
COMPANY

Birmingham's Largest Hardware
154 S. Woodward WE DELIVER MI 4-3010

SALE

We are closing out our entire stock of DuPont paints today at **COST**

Here are just a few tremendous bargains

Duco qt. \$1.98	Flat Wall gal. \$3.10
Satin Finish qt. \$1.98	Semigloss gal. \$4.15
Primer & Sealer . . gal. \$3.40	Ovalite Undercoat . gal. \$4.25
Dulux Enamel . . . gal. \$6.50	Outside White . . gal. \$4.75

BIRMINGHAM PAINT

GLASS & MIRROR CO.

369 E. Maple

Midwest 4-3737