

City Considers Proposal for April Election

The city commission is considering submitting on the April 7 ballot an amendment to the city charter concerning pensions offset by workmen's compensation benefits.

The proposed proposition states: "Shall section 24 of chapter 19 of the city charter be amended to provide the city with means of reimbursement where death of an employee is caused by acts of a third party?"

Approval of the resolution has been tabled until next Monday's meeting.

To Call Hearing Concerning Garbage Incinerator Sites

The Royal Oak township zoning board's consideration of the site for the South Oakland Rubbish and Garbage authority incinerator has been tabled until a public hearing can be called.

At a meeting last week, the board delayed official action. Preferred site is at 10 Mile and Greenfield, and the other two are at 12 Mile and Campbell and Lincoln at Dequindre. All are located in the township.

The township has received objections from residents to all three proposed sites. The zoning board's decision will be whether or not to rezone the preferred site to industrial classification.

Reports on Status Of City at Large Drain Tax Amounts

The city commission Monday evening approved the appropriation of \$152.24 from the contingent fund for city at large drain tax.

This sum will be applied to reimburse the general fund for the funds advanced in connection with the Clinton River Spillway and Red Run drains.

City Manager Donald C. Egbert made the recommendation for this appropriation and also reported on the financial status of the city contributions for the drains.

The east portion of the city was included in both drainage districts. Assessments levied against the city for the Clinton River spillway was \$5,473.91 and Red Run, \$15,111.77. Total city assessments were \$23,585.68.

A total of \$9,049.80 remains to be paid and \$8,397.56 was levied in 1951, leaving a balance of \$152.24.

Egbert added, "The city has advanced \$150 to initiate a survey for the extension of the Lawson drain. It is possible that we will be reimbursed for this amount and this account will be held open until a final decision is made in connection with the survey."

When you need some article or service, when you want to read and use Eccentric Classified Ads.

Selective Service Lists Eight Local Inductees

Eight local men were inducted into the armed forces by the Michigan Selective Service board 67 in Pontiac on Jan. 28.

Listed from Birmingham are: Charles T. Green, Richard S. Taylor, Edward P. Wurzel, Lawrence S. Dille, Alfred A. Haynack, Robert D. Pettig, Robert C. Sackner and Frederick J. Whitcraft. The Bloomfield Hills inductee is William B. Stapp.

Jack L. Filkins, Pontiac, a former resident of Birmingham, is also among the men leaving for active duty.

Tarnival Is Successful

Approximately \$350 was cleared at the Tarnival, sponsored by the school's PTA unit, last Thursday night. According to Mrs. Harold P. Buerge, publicity chairman, Mrs. Duane Tibbitts, 1974 Webster, was the successful bidder when the Lady Baltimore cake, baked by Principal Richard Featherstone, was sold at auction.

What Your Board Of Education Is Doing

Regular meeting of the Board of Education was held January 15, 1952 at 8:30 P.M. in the Hill School.

Resignation of the following teachers accepted: Mary Ann Hartwick, Mary Elizabeth Holcombe, Barbara Gleason. Following appointments approved: Dorothy Khoury, Barbara Jean McCann, Virginia Merritt, Susan Steffen, Jean Marion, and Virginia Pike as teachers.

Lecture series by the University of Michigan for inservice training approved.

Close of school on February 22, 1952 for County Institute approved.

Annual subscription fee payment to the Metropolitan Detroit Bureau of Cooperative School Studies approved.

Payment of bills from the Construction Account in the amount of \$198,716.26 approved.

Purchase order in the amount of \$1819.00 to Pipsan Saariinen Swanson for stage, cafeteria and library materials approved.

Accounts payable and transfer of funds to other accounts in the amount of \$105,903.19 approved.

New purchase in the amount of \$6685.27 authorized.

Two years later in 1929, the Briggs Building was constructed.

Two well-known landmarks in the Birmingham business district were built by the late Walter O. Briggs, who died in Florida Jan. 17.

The Briggs Commercial and Development Co., which Mr. Briggs founded, built both the Briggs Building at the southeast corner of Woodward and Maple, and the Birmingham Theatre building.

The theatre building was dedicated Nov. 22, 1927. At that time the theatre was called The Kinsky Birmingham. Also constructed then were the accompanying stores in the building, including a basement bowling alley.

Two years later in 1929, the Briggs Building was constructed.

The second floor interior wasn't finished then.

The second floor was finally completed 21 years later in 1950, when modern professional offices were installed. In addition, the lobby facing East Maple was completely remodeled and modernized.

Two rules for the city ice skating rinks were announced this week by Director Frank Whitney.

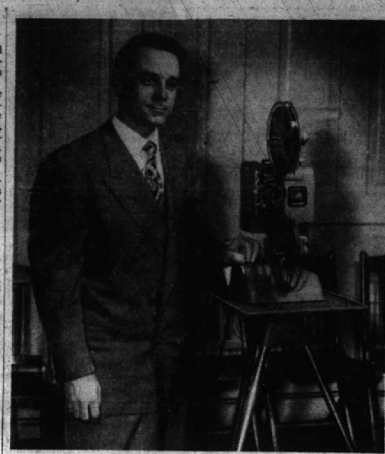
He stated, "Lately we've had some trouble with youngsters using sleds on the rinks. Just this week a couple of skaters were bumped by sleds on the Harmon area. So we have decided to cooperate with the public department and prohibit the use of sleds on the rinks at all times."

THE OTHER new regulation will restrict hours for hockey playing on the rinks from 7 to 9 p.m.

The director said, "Between these hours, the younger children probably will be off the rinks, and the hockey players won't interfere with skating so much."

The director pointed out that the rules will be enforced by the police department.

Whitney said that a switch is located on the light poles and can be turned on by the skaters each evening. He asked persons using the rink to turn the lights off when they leave.



HENRY A. LACY, third generation missionary, spoke and showed motion pictures on the Hindu Pilgrimage to the Temple of Vishnu at the First Methodist church last Thursday evening. Born in Foochow, China, he was graduated from the Shanghai American school and Whittier college. He is now working as supervisor of the Methodist Children's Village in Redford, after several years in educational fields with the Office of Strategic Services for the United States during World War II. (Joe Wheeler Photo)

Local Landmarks Constructed by Walter Briggs

Two well-known landmarks in the Birmingham business district were built by the late Walter O. Briggs, who died in Florida Jan. 17.

The Briggs Commercial and Development Co., which Mr. Briggs founded, built both the Briggs Building at the southeast corner of Woodward and Maple, and the Birmingham Theatre building.

The theatre building was dedicated Nov. 22, 1927. At that time the theatre was called The Kinsky Birmingham. Also constructed then were the accompanying stores in the building, including a basement bowling alley.

Two years later in 1929, the Briggs Building was constructed.

The second floor interior wasn't finished then.

The second floor was finally completed 21 years later in 1950, when modern professional offices were installed. In addition, the lobby facing East Maple was completely remodeled and modernized.

Two rules for the city ice skating rinks were announced this week by Director Frank Whitney.

He stated, "Lately we've had some trouble with youngsters using sleds on the rinks. Just this week a couple of skaters were bumped by sleds on the Harmon area. So we have decided to cooperate with the public department and prohibit the use of sleds on the rinks at all times."

THE OTHER new regulation will restrict hours for hockey playing on the rinks from 7 to 9 p.m.

The director said, "Between these hours, the younger children probably will be off the rinks, and the hockey players won't interfere with skating so much."

The director pointed out that the rules will be enforced by the police department.

Whitney said that a switch is located on the light poles and can be turned on by the skaters each evening. He asked persons using the rink to turn the lights off when they leave.

THE OTHER new regulation will restrict hours for hockey playing on the rinks from 7 to 9 p.m.

The director said, "Between these hours, the younger children probably will be off the rinks, and the hockey players won't interfere with skating so much."

The director pointed out that the rules will be enforced by the police department.

Whitney said that a switch is located on the light poles and can be turned on by the skaters each evening. He asked persons using the rink to turn the lights off when they leave.

THE OTHER new regulation will restrict hours for hockey playing on the rinks from 7 to 9 p.m.

The director said, "Between these hours, the younger children probably will be off the rinks, and the hockey players won't interfere with skating so much."

The director pointed out that the rules will be enforced by the police department.

Whitney said that a switch is located on the light poles and can be turned on by the skaters each evening. He asked persons using the rink to turn the lights off when they leave.

THE OTHER new regulation will restrict hours for hockey playing on the rinks from 7 to 9 p.m.

The director said, "Between these hours, the younger children probably will be off the rinks, and the hockey players won't interfere with skating so much."

The director pointed out that the rules will be enforced by the police department.

Whitney said that a switch is located on the light poles and can be turned on by the skaters each evening. He asked persons using the rink to turn the lights off when they leave.

THE OTHER new regulation will restrict hours for hockey playing on the rinks from 7 to 9 p.m.

The director said, "Between these hours, the younger children probably will be off the rinks, and the hockey players won't interfere with skating so much."

The director pointed out that the rules will be enforced by the police department.

Whitney said that a switch is located on the light poles and can be turned on by the skaters each evening. He asked persons using the rink to turn the lights off when they leave.

THE OTHER new regulation will restrict hours for hockey playing on the rinks from 7 to 9 p.m.

The director said, "Between these hours, the younger children probably will be off the rinks, and the hockey players won't interfere with skating so much."

The director pointed out that the rules will be enforced by the police department.

Whitney said that a switch is located on the light poles and can be turned on by the skaters each evening. He asked persons using the rink to turn the lights off when they leave.

THE OTHER new regulation will restrict hours for hockey playing on the rinks from 7 to 9 p.m.

The director said, "Between these hours, the younger children probably will be off the rinks, and the hockey players won't interfere with skating so much."

The director pointed out that the rules will be enforced by the police department.

Whitney said that a switch is located on the light poles and can be turned on by the skaters each evening. He asked persons using the rink to turn the lights off when they leave.

THE OTHER new regulation will restrict hours for hockey playing on the rinks from 7 to 9 p.m.

The director said, "Between these hours, the younger children probably will be off the rinks, and the hockey players won't interfere with skating so much."

The director pointed out that the rules will be enforced by the police department.

Whitney said that a switch is located on the light poles and can be turned on by the skaters each evening. He asked persons using the rink to turn the lights off when they leave.

Community House Roll Call Workers Planning Luncheon

Feb. 12 is the date of the kick-off luncheon for 50 Community House Roll Call section captains, Mrs. Paul A. Wagner, chairman, said this week. House directors, Mrs. Clayton H. Isley, and co-chairman, Mrs. Frederick C. New also will attend.

The Roll Call opens Feb. 18 and continues through March 1. Goal this year is \$35,000.

Mrs. Wagner said members of the Senior Workshop, a hobby group composed of senior residents in the city, are making name tags for the luncheon.

Several thousand informative booklets, accompanied by a contribution request letter, were sent out last week and some donations have already been received.

"This sort of cooperation on the part of many friends of the Community House is most gratifying," Mrs. Wagner said.

COST OF printing the booklets was sponsored by the Birmingham Real Estate board. Said George E. Markley, president, "We feel that the Community House serves all of Birmingham, and is a valuable and unique asset to our city."

Plans for business solicitations, which are under the direction of Lyman J. Craig, Jr., are going forward and all business establishments in Birmingham and surrounding areas will be contacted.

Contributions sent by mail should be made payable to Birmingham Community House and may be sent in before the drive officially opens.

Use Classified Ads—They Sell!

White T Shirts Nylon Neck

• WON'T STRETCH
• WON'T SAG
• LONGER WEARING
• SHRINK RESISTANT
• TAPED NECK AND SHOULDER SEAM

\$1.50

MORTIMER'S
123 W. Maple

COMPLETE TRAVEL SERVICE
Phone MI 4-5550
Plane — Train — Ship — Tours
Hotel Reservations

Birmingham Travel Service
Grace Plummer Realty
123 Campbell's Village Store

NOW!

BIRMINGHAM ROCHESTER

telephone customers dial directly to telephones in

BIG BEAVER

and telephone customers in

BIG BEAVER

dial directly to telephones in

BIRMINGHAM ROCHESTER

Dial them just like local calls. You'll like this new improvement. It will give you even better and faster service.

MICHIGAN BELL TELEPHONE COMPANY

After! They've Been Cleaned by

WILLIAM GIBSON

Furniture and Carpet Cleaning Service
COMPLETE IN YOUR HOME

3743 RAVENA ROYAL OAK, MICHIGAN
Lincoln 5-5392

TELEVISION SERVICE

Prompt, Efficient Expert Attention

We service Birmingham, Bloomfield Hills, Royal Oak and adjacent communities

Call Midwest 4-1814

MLKS APPLIANCES

1435 S. WOODWARD

CLEARANCE

UP TO 1/2 OFF

ON ALL WOOL AND PART WOOL SPORT SHIRTS

Plaids, Checks, and Solid Colors—Both Heavy and Lightweight

Mortimer's

123 West Maple

EVERYONE'S RUSHING TO SEE THE MARTIN-SHOUR NU-HUE COLOR BAR

Now, enjoy the blended color scheme you've dreamed about... from 1000 colors in paint at the Nu-Hue Color Bar. Match your color sample, too, with prescription-mixed colors which dry on the wall to exactly the shade selected. Come see this thrilling array of 1000 interior colors... today!

MATCH FABRIC • MATCH LEATHER MATCH FORTY AND CHINA

Maskill Hardware

Just a Few Blocks South of 14 Mile Rd.

Daily: 9 A.M. to 8 P.M.
Sun: 10 A.M. to 2 P.M.
Closed Wednesday

Lincoln 2-4700
Ample Parking Space Available

WE STOCK YOUR

REMODELING NEEDS

TOP QUALITY PANELLING IN

KNOTTY CEDAR DRIFTWOOD
KNOTTY PINE WELDTEX
HARDWOOD PLYWOOD PANELS

INSULATION VALUES IN

BALSAM WOOL ROCK WOOL
FIBERGLAS ZONOLITE

Consult Us First and Let Us Help With Your Problems

BIRMINGHAM LUMBER & Supply Company, Inc.

1025 HAYNES ST. PHONE MI 4-3636
HOURS: 7:30 to 5:00, Mon. thru Fri., 7:30 to 1:00, Saturday

HARPER BEAUTY

Featuring FACIALS and SLENDERIZING

Phone: MI 4-6530 144 W. Maple

BIGELOW WIZARDS present new carpet magic

Sun Valley

A wonderful Wilton weave—all done in pure imported wool.

\$9.50
SQ. YD.

Formerly Sold At \$14.95 Sq. Yd. Beige and Green

The name "Sun Valley" brings a picture of snow, and sun, and the joy of sport. This carpet has the same sense of cheer. Make a trip to see SUN VALLEY. You'll admire it for looks, you'll acquire it for keeps.

Harold B. Brown
CARPETS and RUGS
Between 11 & 12 Mile Rds.
BUDGET TERMS AVAILABLE

2863 Woodward Mon., Thur., Fri., Open until 9

Berkley Lincoln 2-9595

NEW green toothpaste with miracle chlorophyll!

GIVES YOU A Clean Fresh Mouth not for minutes...but ALL DAY LONG!

Use it after meals

Destroys MOUTH ODORS
Combats Common GUM TROUBLES
Fights TOOTH DECAY

Chlorodent 69¢

NOW—a toothpaste made with chlorophyll, the life-giving green substance in all plants. It performs a miracle in your mouth! By using Chlorodent Toothpaste regularly—

preferably after meals—you can have a clean, fresh mouth all day long! Chlorodent cleans teeth beautifully—promotes complete mouth hygiene. Children love it. Get Chlorodent today.

ITS NATURE'S GREEN TOOTHPASTE
Made by the Makers of Peppermint

Wilson Drug

WOODWARD AT MAPLE

2 hours after using Chlorodent, breath was still clean in 98% of the bad-breath cases tested. 4 hours later, 3 out of 4 were still free of bad breath!

WASH WHERE YOU SEE THIS — SIGN —

BIRMINGHAM LAUNDROMAT

Free Parking—8 A.M.—8 P.M., Sat.—5 P.M.
1287 S. Woodward Midwest 4-8225
2 Blocks South of Lincoln

Let Me Build Your Home

HENRY M. HENDERSON

GENERAL CONTRACTOR
CUSTOM BUILDING — REMODELLING

Free estimates gladly given.

Phone: Va. 6-1547 13951 Warwick, Detroit 23

"SPRING IS TOO LATE!"

Trees over 4" diam. must be planted in winter. Order next summer's shade now. Remove trees while your lawn is frost-free. more ECONOMICAL! (DISEASES DIAGNOSED)

PHONE LI 2-6132
Days or Evenings

Trim in The Dormant Season

JOHNNOT TREE SERVICE

Graduate Forester

TILE

Rubber Vinyl Plastic Asphalt

Complete linoleum and sink top service. Estimates made without obligation.

T. E. HOGAN CO.

Berkley—3 blocks south of 12 Mile.
Where parking is no problem!
2865 Woodward Avenue LI 4-3300