

When you give your word to another, that you will do a certain thing, you have given the best you have to offer. If your word is not kept, you are not very good . . . so whether or not one keeps his word reveals how good or bad he is. It's that simple.

The Birmingham Eccentric

PART 2

Thursday, January 3, 1952

NEW HOMES for the NEW YEAR!

232 PILGRIM. Here's that three-bedroom, two bath Colonial Home. Library. Good-sized kitchen with disposal. Formica counters. The basement has an asphalt tile floor and painted walls. Macadam drive. In Quanton Lake Estates, this is a good buy.

965 SUFFIELD. Nicely designed four-bedroom, two-bath brick and frame Colonial home. Library. Porch. Large closets to delight madam. Dishwasher. Disposal. 105-foot site to give you elbow-room. Quanton School 2 blocks. You'll want to see this.

1079 PURITAN. A new five-bedroom, three bath home is not easy to find. This Farm Colonial home, in addition, offers you a library, full dining room, breakfast nook and porch. Recreation room with fireplace and laundry. Gas Heat. Large site. Be sure to see this one!

BLOOMFIELD VILLAGE - 1508 Cranbrook Road. If it's location plus—with a perfectly elegant home you want, this Early American Colonial can't be beat. Panelled library. Porch. 4 bedrooms, 2 baths. Maid's room and bath. Lovely 175-foot setting. 3-car garage.

WING LAKE ROAD: In "Shirley Farms". This delightful brick and frame Ranch Home has a perfectly wonderful floor plan. 3 bedrooms, 2 baths. Terrace. Oil Heat. 2-car garage. Approximately an acre of "country living" surrounds this home.

Don't delay—call today! Some of these homes are ready for decorating now. You not only can have a new home but you can have it decorated to augment your furniture and personality.

SNYDER KINNEY & BENNETT
INC.
Realtors

239 S. Woodward Midwest 4-7000

Bits of Birmingham

While all our dreams of a white Christmas came true with a vengeance, the weather was pretty tough on the kids. The ones who received sleds and skates from St. Nick were unable to use them because of the amount of snow. The poor kids who found nice new shiny bikes around the Christmas tree are facing several weeks before they can even get outside to impress the neighborhood gang. About the only ones who got to give their toys an outdoor test were the ones to whom pop and mom hopefully gave a snow shovel!

Well, well! This year we get a bargain. Being Leap Year we have an extra day thrown in for free of course, coming in February as it does there will be a slight extra charge for fuel, etc.). More than that, it appears that perhaps it may turn out to be a "lucky" year, for out of all those 366 days, only one Friday falls on the 13th. That one, in case you're interested and don't want to look it up yourself, is in June.

A new law has been hit in Birmingham building. During the

past week not one permit was issued through the building inspector's office. "Two holidays, two weekends and a super abundance of snow was just too much for 'em," was the comment.

The city's business section had an eerie atmosphere Monday morning as a fog rolled over. Looking toward the Baptist Church from the corner of Bates and Maple, only the outside lines of the large structure could be seen.

Use Classified Ads—They Sell!

Telephone
Lincoln 2-0553-4
Jordan 4-6578

Fred Burton Abstract Company
Abstracts, Title Insurance, Escrow

23880 WOODWARD AVE.
PLEASANT RIDGE

GOOD HOUSES

In the Medium Price Bracket

Brick Cape Cod built by Kassabien in 1947 in area of new homes. You will find this cozy appealing and well built. Two bedrooms and tiled bath on first floor with room for expansion on the second floor. Forced air oil heat, screens, storms, garage. \$15,900.

Near Adams School and of solid masonry construction with new roof, new oil heating unit, and new gas hot water heater. The house has unusual living space for the family of moderate means. Two bedrooms and bath on first floor, two bedrooms on second. Two car garage. \$16,000.

Space, convenience and comfort are available in an older frame house. Fireplace in living room, breakfast room, downstairs bedroom and lavatory, large screened porch are a few of the comforts, in addition to three bedrooms and bath on second floor. Garage. Fenced yard. \$16,000. Terms.

WALSH, JAMES & WASEY Co.
Realtors

431 S. Woodward Ave. MI 4-6500

A Prize Winning Design

Present Day Living Requirements Met at a Price of \$20,400.



1236 Maryland Blvd. Birmingham Crestview Sub. 3 blocks east of Southfield Road at Lincoln Avenue West

1. Lot 100 feet by 130 feet - side yards and front sodded.
2. New Concrete Paving. Nine foot concrete approach to garage.
3. Large two car attached garage with Aluminum Tilt-A-Dors.
4. Connecting Breezeway approximately 14 feet by 10 feet.
5. Five rooms on first floor, including two bedrooms.
6. Second floor available for additional rooms and bath.
7. Gas heat, A.C. system, with General Electric furnace.
8. Well arranged basement, plenty play and laundry space.

Other New Homes, \$13,650, \$14,800, \$22,950 and up.

REID-PATERSON INC. Builders
Sales in Charge of Carl H. Plumbhoff

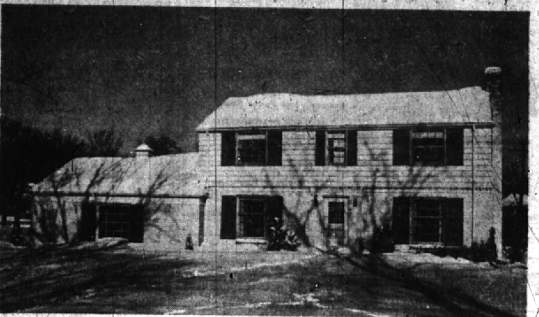
Midwest 4-1828 - Jordan 4-6585 - Vermont 5-1839

Display Homes Open for Inspection Saturday & Sunday Afternoons
Shown by appointment any time.

Proposed Taxi Cab Ordinance on Southfield Agenda

Discussion of a proposed ordinance, Tuesday, Jan. 8. In the meantime, a temporary nance to regulate taxi cab operation. The ordinance was read at the license was granted Raymond G. Hale to operate a taxi cab headquarters in Southfield township will last meeting but board members wanted more time to study it. quarters at Telegraph and 12 Mile

WHITE COLONIAL in BLOOMFIELD VILLAGE



So clean it sparkles . . . so new it's just been "unwrapped" . . . the owners of this attractive home spent years planning it . . . built it and now, alas, have been transferred! We're sorry for them . . . but we're proud to have this lovely Colonial to show to you.

- Center Hall . . . free circulation to all rooms.
- Generous Living and Dining Rooms . . . plus comfortable Library.
- 1951 labor-saving Kitchen . . . Breakfast Room.
- 4 fine Bedrooms (each will take twin beds comfortably) . . . 2 tiled Baths . . . extra Lavatory on first floor.
- Recreation and Hobby space in the basement.
- Complete carpeting . . . and some drapes.

You don't want the fuss and bother of building . . . this charming home is new and ready for you. The location is the best . . . in the low tax area of Bloomfield Village. Let's see this today!

CALL

MAX BROOCK INC.

REALTORS
ESTABLISHED 1896

300 S. Woodward Ave.

Midwest 4-6700

IF YOU ARE BLESSED



2020 W. Lincoln

With a large family, life will never be dull for you. You'll have a lot of fun, but you will have some tough problems to face, too.

Let's take for instance the problem of housing. Suppose you need five bedrooms, or even six. Have you priced the new five-bedroom houses lately? They really are up.

We had you in mind when we listed this house. Plenty of room on the first floor. Six bedrooms and three baths on the second floor. Built stanchly. All-brick exterior. Excellent heating system. Lovely wooded corner lot, 120x200.

The new High School is only five minutes walk from the front door. School buses to Jr. High School. Quanton School for the young ones.

It's a BUY at \$32,500. You can't beat it. Let's see it today. Call us for an appointment.

WATT, MANUEL & SNYDER, Inc.

Realtors

There is no substitute for Integrity

298 S. Woodward

Midwest 4-6300



We hear a lot about dual-purpose ROOMS these days.

Here is a

DUAL PURPOSE HOME

on the shore of Wing Lake

- Winter home offering the very best in locations—
Plus convenience to Detroit, to transportation and to schools—
Plus winter sports at your door, ice-boating, skating, tobogganing—
Plus beauty from every window, both lakeward and landward.

- Summer home offering the same in accommodations, location, and convenience—
Plus boating, swimming, and excellent fishing—
Plus beautiful gardens, trees, and the same views in summer garb.

All this combined in One

Country Colonial . . . 5 bedrooms (maid's quarters on first floor)
3 1/2 baths . . . Pine panelled library . . . screened porches, one on the lake side and one on the land side . . . taxes exceptionally low . . . insulation can be judged by a current annual heat cost of approximately \$200.00 . . . Lots of extra features such as dishwasher, gun cabinet, moth-proof closet, and a garage for 4 cars.

CALL TODAY FOR AN APPOINTMENT

BENJAMIN and STEPHENS, Inc.

Realtors

259 S. Woodward
Midwest 4-3232

Birmingham, Michigan
Jordan 4-5728