

You Get Only the Parts You Can Fry When You Buy

A&P's TENDER, **Fryers** NO HEADS, FEET OR EXCESS WASTE!



Customers' Corner

What is VALUE—anyway?

You've probably seen the word hundreds of times. Ever stop to think of what it means? Just this: Getting your money's worth!

At A&P we see it that value really means something—not just a few items—but on everything we sell in our stores. We think that adds up to serving you better... greater satisfaction... and just plain good sense. Don't you agree?

CUSTOMER RELATIONS DEPT.
A&P Food Stores
420 Lexington Ave.
New York 17, N. Y.

Lb. **57c**

You can't fry heads, feet and excess waste, so A&P removes them before weighing your fryers. You get only edible parts... tender, meaty and delicious. Yet see how thrifty A&P's price is!

"Super-Right" Tender, Delicious
Pork Loin Roasts

Rib End Portion Lb. **37c**

Whole, Half or Loin Portion Lb. **49c**

Choice Center Cut...
Pork Chops Lb. 77c
Really Fresh and Delicious
Ground Beef Lb. 65c
Small, Meaty
Spare Ribs Lb. 49c
"Super-Right" Lean Rindless
Sliced Bacon Lb. 47c
Try One for a "Taste Thrill"
Smoked Picnics Lb. 43c
Mickelberry, Hygrade or Armour's
Pork Sausage Breakfast Links Lb. 59c

Floridagold Frozen
Orange Juice
2 8-Oz. Cans **25c**

Libby's Fresh Frozen
Green Peas
2 12-Oz. Pkg. **45c**

Iona
Tomato Juice
18-Oz. Can **10c**

Great Grocery Values

Fresh-like French Style
Green Beans 11-Oz. Can 18c
Reliable Brand—Very Tender
Green Peas 17-Oz. Can 16c
L&K Cut Green
Asparagus 14½-Oz. Can 27c

Coldstream Alaska Pink
Salmon Lb. Can **49c**

A&P Whole Kernel
Golden Corn 16-Oz. Can 18c
Jack Rabbit
Navy Beans 2-Lb. Pkg. 25c
Sure Good
Margarine 2 1-Lb. Ctns. 45c

Perfect Blend Shortening
dexo 3 Lb. Can **79c**

A&P Brand Tasty
Apple Sauce 16-Oz. Can 10c
Pillsbury's Best
Pancake Flour 40-Oz. Pkg. 35c
All Purpose
Sunnyfield Flour 5-Lb. Bag 39c

Agar's Spiced
Luncheon Meat 12-Oz. Can **33c**

Golden Sweet, Unpeeled Halves
Iona Apricots 25-Oz. Can 33c
Made with "Fluff"
Northern Tissue 3 Rolls 23c
Cream Sandwich
Veltman's Cookies 12-Oz. Pkg. 27c

A&P Super Markets
THE GREAT ATLANTIC AND PACIFIC COAST COMPANY

Stock Up During A&P's Great Mid-Winter Potato Event...

MAINE POTATOES
48 Lb. Bag **2.69**
15 Lb. Bag 85c

MICHIGAN POTATOES
48 Lb. Bag **2.19**
15 Lb. Bag 75c

Flavorful, Golden Ripe

Bananas 2 Lb. **29c**

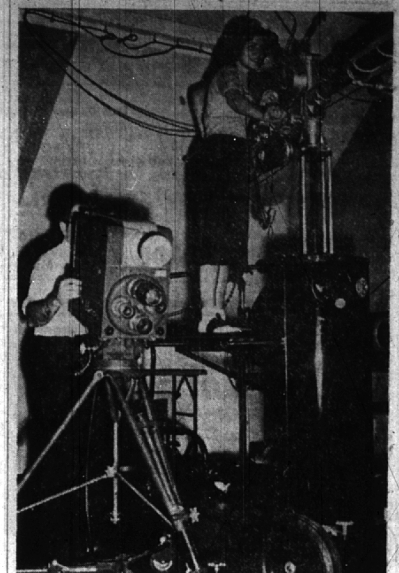
Crisp, Western
Winesap Apples 2 Lb. 29c
Florida Sweet, Juicy-Filled
Oranges 8 Lb. Bag 49c
Florida Sweet, Jumbo 46-54 Size
Grapefruit 3 for 29c
Firm, Red Ripe
Tomatoes 16-Oz. Can 25c
Tender, Delicious
Brussel Sprouts 16-Oz. Pkg. 29c
California
Fresh Dates 16-Oz. Pkg. 29c

JANE PARKER FRESH EXTRA LARGE
Jelly Roll Each Only **29c**

Jane Parker Cinnamon
Breakfast Rolls Pkg. of 5 25c
A Grand Value in Crisp Jane Parker
Potato Chips Box 63c
Large Size Fresh Banana
Layer Cake 8-Inch Size 79c
Sugar, Oatmeal or Molasses
Crisp Cookies Large Pkg. 29c

Sunnybrook Grade "A"—Fresh
Large Eggs Doz. in Ctn **55c**

Sliced Pimento or Swiss
Mel-O-Bit Cheese 8-Oz. Pkg. 31c
Wisconsin Fresh
Brick Cheese Lb. 55c
Mild Flavored Cheese
Frankenmuth Lb. 56c
Genuine Imported
Danish Bleu Cheese Lb. 75c
Borden's Processed
Cheese Spread 1½-Lb. Pkg. 59c
Borden's Eagle Brand
Cream Cheese 8-Oz. Pkg. 16c



GINNY HOOD, Birmingham senior at Michigan State college, gets a taste of the newest in TV equipment at MSC, Miss Hood, daughter of Mr. and Mrs. Charles O. Hood, 1017 Henshew and a 1948 graduate of Baldwin high school, is operating the perambulating microphone boom which carries a mike and camera operator. Students at MSC aid fulfilling staff members in the operation of the closed circuit video station which makes telecasts from a central studio to several campus buildings. The college has applied to the Federal communications commission for a commercial channel and if permitted, will operate the station on a daily programming basis. Students will aid with production, lighting, scene designs and other phases of the station operation.

Authorize Drain Comm. to Clean Lathrup Drain

The Southfield township board Tuesday evening authorized the county drain commission to have as much of the Lathrup Township drain cleaned as may be necessary.

In a letter to Supervisor William Rogers, Drain Commissioner Ralph Main stated the drain needed cleaning.

The board's resolution authorized the commissioner to spend in excess of \$800.

IN OTHER BUSINESS, the board considered a request from the Southeastern Garbage and Rubbish authority, which asked for an advance in funds for preliminary expenses.

All municipalities in the authority have been asked to contribute advance funds at the rate of 50 cents per capita. Southfield's expense would be approximately \$9,000.

The advance funds will be refunded when the bonds are issued for the project.

The board voted to place the \$9,000 appropriation on the budget, which will be submitted for approval at the annual township meeting in March.

Township Clerk Mrs. Fannie Adams was authorized to sign a rental contract for a year, for

three voting machines.

Consideration of the proposed new taxi ordinance was tabled until the Feb. 12 meeting. Board member Glenn Hague stated, he would like to investigate some of the functions of the Detroit taxi ordinance before the township's is approved.

Wagner

Wagner

Wagner

Wagner

Wagner

Wagner

Wagner

Wagner

Wagner

Wagner

Wagner

Wagner

Wagner

Wagner

COMPLETE FOR THE FUTURE
every NEW **Motorola TV**
designed for COLOR and UHF reception

McCallum & Dean
MIDWEST 4-5230 409 E. MAPLE AVE.