

You Are Cordially Invited to Inspect
OUR MODERN STORAGE
Built Especially to Store Household Goods
LOCAL AND LONG DISTANCE MOVING
GAUKLER STORAGE CO.
9 Orchard Lake Ave., Pontiac, Mich.
Dial "O" ask for Enterprise 6305

Veteran's Housing Fund Closed Out

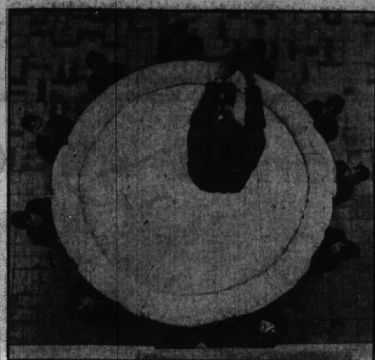
The city's veteran's housing fund was closed out last week by the city commission.

The project has been discontinued and all the physical assets of the fund disposed of, according to City Manager, Donald C. Egbert.

Egbert stated, "There remains some cleanup work in connection with the removal of sidewalks and other debris from the sites of the two housing projects. It is proposed that this work be accomplished by the Forestry and Parks department."

In closing the account, the commission approved the transfer of \$250 from the housing fund to the parks budget to accomplish the cleanup; closing of the veteran's housing fund accounts; transfer of any balance in the fund to the general fund; and the provision that any additional receipts to the veteran's fund be credited to the general fund.

Although rubbish is picked up once a week at all residences in the city, no special charge is levied on home owners for this collection. More frequent pickups are made at business places, and a nominal amount is charged for commercial collections.



HEY, FELLAS, DON'T WALK AWAY—YET!—Showing perfect form, an Italian fireman drops toward the center of a round elastic mattress held tight by his comrades. The jump was part of the regular training schedule at the firemen's barracks in Rome. According to authorities, a modern hero wouldn't have a chance in the Italian capital today.

FRANKLIN NEWS

By ANGELA DADSON
MAYFAIR 4-2441

Square Dance Social

Stan Krenzel, Community association program chairman, announces a square dance to be held at the Community Hall Friday, Jan. 18, at 8:00 p.m. There will be no admission charge as such, but each lady must bring a box lunch for two. These will be auctioned off at intervals during the dance to provide late evening snacks. Auctioneers will be Ralph Woodburn, Fred Worden, Phil VanDyke and Win Hinman. Attire should be suited to square dancing and there will be prizes for the ladies most appropriately dressed. Art Carty will serve as caller.

The association will hold its regular meeting at the community hall at 8:30 p.m. next Monday.

Vacationer Returns

Mrs. Kenneth Herman, of Captains lane, who left with her husband in November for the west coast, has concluded her extensive vacation. Herman spent the Thanksgiving holiday there and flew out again to be with his wife for Christmas and New Year's. Son Kenneth, Jr., a junior at Michigan State, also flew west to spend his Christmas vacation with his parents.

Post-Holiday Notes

Heavy snow and the fog that plagued us put a crimp into many holiday plans to that seasonal decorations were still up in many homes last weekend and many were entertaining friends and relatives from out of town who just couldn't make it earlier.

Among those who were hosts last weekend were the Leo Burrs, the Charles Holzens, the George Gerlachs, the Victor Benders, the Frank Goldmans, the Lawrence Dunns, the Clyde Worleys and Mr. and Mrs. Bob Squiers.

The fog changed a lot of New Year's Eve plans but all 25 guests arrived for the party given by the Joseph Tuslys at their home on Riverwood road.

A considerable crowd also attended the Irwin White's annual square dance and New Year's party at the Community Hall. Spotted there and still dancing in the few hours of New Year's morning were Dr. and Mrs. Harlow Bates, the Leo Wischmans, the Walter Kattens, Dr. and Mrs. Lynn Hershey, the Dudley Campbells, the Hal Trumps, the Chester Harbs, the William Albeas, the Frank Goldmans, the Lee Frasers, the Dick Lewises, the Lincoln Parkers, the Ben Harries, the Phil VanDykes and the Ford Ritters.

Franklin Miscellany

Mrs. Marvel Taylor was hostess last Sunday afternoon at a supper party at the Taylor home on Wellington road. Her 18 guests were a group from Calvary Methodist church in Redford.

Mrs. Dalton Sifton will represent the Franklin Community church when the Southern Oakland Council of Churches meets in Royal Oak tomorrow morning. Mrs. William Lovejoy and Mrs. Win Hinman will attend also.

The Glen Shoemakers, the Win Hinmans and the Clifford Baughs went in a party to see "Guys and Dolls," as did the John Scolaros and guests.

Birthdays

Kitty Ann Hinman was 10 last Friday, Jan. 4. She was hostess to a group of classmates at her home on Wellington road.

Ten, too, was Tony Wasechla, whose birthday fell on the 5th. His birthday party was attended by Franklin schoolmates.

Meetings

The Friendly circle will hold its January meeting at the Community church at 12:30 next Wednesday. After a desert luncheon and the business meeting, the group will hear a lecture on "Famous

Church League

January schedule of games in the Birmingham YMCA inter-church basketball league was announced this week by Ed Kierbert. Dates and locations are Jan. 14 at Baldwin elementary gym, Lutheran Townsite vs. Embury Methodist, 9 p.m.; Jan. 15 at Baptist church gym, Southfield vs. Christ Church, 7 p.m.; Jan. 16 at Baptist church gym, Southfield vs. Christ Church-First Methodist, 8 p.m.; Jan. 17 at Huron, Christ Church-First Methodist, 8 p.m.; Jan. 22 at Baptist gym, First Presbyterian-St. James, 7 p.m.; Southfield U. S. Colony Methodist, 8 p.m.; Jan. 28 at Baldwin gym, 8 p.m.; Jan. 29 at Baptist gym, Southfield U. S. P. Lutheran-Townsite, 8 p.m.; First Methodist-Embury, 8 p.m.

Church League Cage Schedule

January schedule of games in the Birmingham YMCA inter-church basketball league was announced this week by Ed Kierbert. Dates and locations are Jan. 14 at Baldwin elementary gym, Lutheran Townsite vs. Embury Methodist, 9 p.m.; Jan. 15 at Baptist church gym, Southfield vs. Christ Church, 7 p.m.; Jan. 16 at Baptist church gym, Southfield vs. Christ Church-First Methodist, 8 p.m.; Jan. 17 at Huron, Christ Church-First Methodist, 8 p.m.; Jan. 22 at Baptist gym, First Presbyterian-St. James, 7 p.m.; Southfield U. S. Colony Methodist, 8 p.m.; Jan. 28 at Baldwin gym, 8 p.m.; Jan. 29 at Baptist gym, Southfield U. S. P. Lutheran-Townsite, 8 p.m.; First Methodist-Embury, 8 p.m.

BIRMINGHAM FRUIT CO.
124 MIAMI
N. Woodward 4-4030
S.D.M. LICENSE
S.D.D. LICENSE
All Delicacies For The Holiday
FREE PARKING
at Rear of Store

LIBERTY CLEANERS
for better dry cleaning
PICK UP & DELIVERY SERVICE
PHONES MI 4-0222 MI 4-9700
Haynes At Hunter Blvd.
We Own and Operate Our Own Plant

John M. Brown Speaks At Town Hall on Jan. 16

John Mason Brown, one of the country's whitest speakers, will report on the latest Broadway plays at Detroit Town Hall, Wednesday morning, Jan. 16, at 11 o'clock in Fisher Theatre.

As associate editor of Saturday Review of Literature, Brown has won national fame for his column, "Seeing Things."

Use Classified Ads—They Sell!

ELLIOTT FURNITURE COMPANY
Located on East Side of Dixie, 14 Mile South of Waterford
FINEST UPHOLSTERING
Our twenty-six years in Pontiac is your guarantee of satisfaction. Our upholstery craftsmen and experienced tradesmen qualified to refinish and restyle, if necessary, your most treasured pieces. Repupholstered furniture may also be refinished in our complete cabinet and finishing department. Slight additional charge for refinishing. Our material and fabric selection is complete.
CUSTOM MADE FURNITURE
5390 Dixie Highway Phone Orlando 3-2641

+ ALL RISK Insurance +
THE MCLELLAN AGENCY
Successors to the Rice A. Howell Agency
Rm. 245-247 Briggs Building MI 4-2860
Financial Security is Second only to Health

Let Me Build Your Home
HENRY M. HENDERSON
GENERAL CONTRACTOR
CUSTOM BUILDING — REMODELLING
Free estimates gladly given.
Phone: Va. 6-1847 13951 Warwick, Detroit 23

Before you buy any power tool
See Shopsmith!
Compare 5-in-1 SHOPSMITH with any power tool at any price. Compare it for accuracy, quality, big tool capacity. See for yourself why SHOPSMITH, a complete power workshop in one compact unit, is America's largest-selling power tool. Come in and ask for a demonstration.

\$189.50
complete 5-tool unit with motor Special 1/2 hp. motor—\$34.90

IT'S AN 8-INCH CIRCULAR SAW with up to 48 inches between blade and fence.

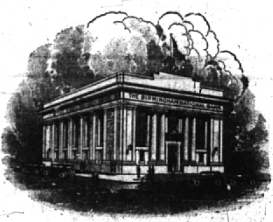
IT'S A 33-INCH WOOD LATHE with 15-inch swing, variable speeds, unique tool rest.

IT'S A 12-INCH DISC SANDER with miter gauge, locking fence, exclusive disc feed.

IT'S A 25-INCH VERTICAL DRILL PRESS with 27-inch chuck, big table, many production tool features.

IT'S A HORIZONTAL DRILL PRESS with 4-inch quill feed, depth gauge, unlimited capacity.

Easy Payment Terms
Immediate Delivery
\$30.00 Down—\$10.00 Per Month
Maskill Hardware
4400 N. Woodward Open Sunday 10 to 2
Just a Few Blocks OPEN EVERY DAY
South of 14 Mile Rd. TILL CHRISTMAS
Ample Parking Space Available



Directors

MERRILL C. ADAMS
GEORGE R. AVERILL
ROBERT A. EMMETT
HERBERT H. GARDNER
CHARLES E. LEWIS
JOHN E. MARTIN
ERNEST W. SEAHOLM
J. ROBERT F. SWANSON
A. C. WERMUTH
RALPH A. WILSON

RESOURCES

Cash on hand and in Banks	\$ 4,269,785.42
United States Government Obligations	9,067,358.72
Securities of Federal Agencies	1,113,875.00
State, County and Municipal Bonds	2,013,359.20
Other Bonds and Securities	207,634.50
Federal Reserve Bank Stock	22,500.00
Loans and Discounts	2,111,763.29
Real Estate Mortgages	3,239,618.29
Banking House (Less Reserve)	269,077.96
Furniture and Fixtures (Less Reserve)	83,600.77
Prepaid Expense	10,625.54
Accrued Interest on Bonds Purchased	402.21
Total Resources	\$22,409,600.90

LIABILITIES

Capital—Common Capital Stock	\$ 375,000.00
Surplus Fund	375,000.00
Undivided Profits	130,000.00
Reserves for Contingencies	106,134.68
Reserve for Taxes and Dividends	79,477.88
Interest Collected But Not Earned	39,768.59
Other Liabilities	None
Deposits:	
Public Fund Deposits	\$ 2,077,896.60
U. S. Government Deposits	233,879.79
State of Michigan	31,250.00
Other Deposits	18,961,193.36
Total Deposits	21,304,219.75
Total Liabilities	\$22,409,600.90

*United States Government Securities of a Par Value of \$700,000.00, Carried in the Foregoing Statement are Pledged to Secure Deposits Where Required by Law

The Birmingham National Bank

MEMBER FEDERAL RESERVE SYSTEM

MEMBER FEDERAL DEPOSIT INSURANCE CORPORATION