

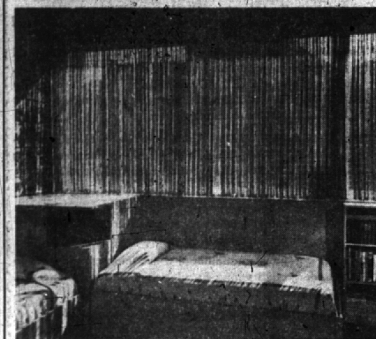
Piety Hill Starts New Year with January 8 Meeting

The Devonshire road home of Mrs. Harriet Green was the scene of the January 8 meeting of Piety Hill chapter of the DAR. The first program of the New Year featured Miss Margo Pearson, curator of social history of the Detroit Historical Society. Miss Pearson spoke on "A Century of Hats".

Receiving with Mrs. Green were assistant hostesses Mrs. William Graham, Mrs. Robert Watt, Mrs. Niel C. Talmage, Mrs. Leroy Braisted, Mrs. Charles Lawson and Mrs. Fred M. Brooks.

Matthew's
LADIES' AND MEN'S CLOTHING ALTERATIONS
MEN'S FURNISHINGS
285 E. Maple
BRIGGS BLDG.
CUSTOM TAILORS FUR STORAGE
FREE PARKING
MI 4-1777

Now at Bessenger's



Bamboo Draperies

DRAMATIC . . .
WITH BEAUTY THAT LASTS FOR YEARS
Bamboo draperies heighten the dramatic theme in any room. Here, as with no other fabric, may be achieved the soft diffused light so desirable with modern decor. Installed on traverse tracks with pull cord operation, they can be drawn completely to the end of the windows to form corner draperies.

- Choice of Natural and 8 Decorator Colors
- Colors on special order

In Stock, 72"x60" — \$12.50 pr.
120"x60" — \$19.50 pr.

Complete Stock of
DRAPERY HARDWARE
LI 1-936

BESSENGER'S
23535 Woodward Ave., Near 9 1/2-Mile Rd.

Student to Speak Before Garden Club

A talk on international relations by a student recently returned from abroad will highlight the January 14th meeting of the Birmingham branch of Women's National Garden and Garden Association, Inc.

Katherine Stencil of Ionia will come from Michigan State College to speak at the meeting, which will begin at 1:30 at the Community House.

Katherine was chosen by the government as a 4-H honor student to spend five months in Austria. She will accompany her talk with colored slides.

Miss Stencil will be introduced by program chairman, Mrs. Alvin H. Knorr.

THE TEA COMMITTEE is headed by Mrs. Fred R. Sargent and Mrs. E. W. Seaborn. They will be assisted by the hostesses Robert Parrish, J. J. Kelly, Martin Rice, A. J. Sircove, R. F. Reitter, Wallace Reid, Ralph Schell, Fred Riddon and L. W. Robertson.

Mrs. Mark Kraus will arrange the table decorations.

Have You Met . . .
Former Clawson residents, Mr. and Mrs. Clayton T. Walk. They have been residing at 535 Hanna since November 17. Mr. Walk is with Wall's Furniture Shop in Birmingham. Members of the Presbyterian church, he is a member of the Presbyterian Men's Club. His hobbies are hunting and bowling.

Want ads cannot be accepted after 5 p.m. each Tuesday.

LIBERTY CLEANERS
for better dry cleaning
PICK UP & DELIVERY SERVICE
PHONES MI 4-0222 MI 4-9700
Haynes All Matter Blvd.
We Own and Operate Our Own Plant

Village Nursery School
32800 Franklin Road
FRANKLIN VILLAGE
A GOOD SCHOOL FOR LITTLE PEOPLE
Transportation is furnished
Phone
MAYfair 6-3020 or 6-2790
from 9 to 3:30



HARMONY REIGNS AMONG NATIONS IN THIS INTERNATIONAL DISPLAY OF DOLLS from all nations, collected by Dr. and Mrs. Maynard R. Bailey of Arlington drive, Beverly Hills, and many of their friends from all over the world. The collection consists of forty dolls, and belongs to the Baileys' four year old daughter, Christina Louise. It includes representatives from every continent and from many areas of the United States. (Joe Wheeler Photo)

Double-ring Ceremony by Candlelight

The candle-banked altar of the Mayflower Congregational Church in Detroit was the scene of the December 28th nuptials of Donna Lee Yost and Carl James Beuthien.

The bride is the daughter of Mr. and Mrs. G. Dewey Yost of Detroit. Carl's parents are Mr. and Mrs. Carl Beuthien of Backingham road.

The Rev. A. Christensen officiated at the double-ring ceremony which took place at 7:30 in the evening.

Chantilly lace fell over the antique tulle of the bridal gown, and formed a panel running from the illusion net neckline to the hem of the hooped satin skirt.

Pleats fell from a point in the bodice into a train. The bride's pearl tiara caught a fingertip illusion veil. She carried a bouquet of rosebuds and baby mums centered with a white orchid.

MARY BEUTHIEN was her new sister-in-law's honor attendant. Her deep coral taffeta gown was covered with matching net, and completing her costume was a coral satin jacket.

Her headpiece was of matching lace and she carried coral carnations and blue baby mums tied with blue streamers.

Also preceding the bride up the aisle were Patti McCurdy and another sister of the groom, Nancy Beuthien. The style of their light blue gowns matched the dress of the maid of honor, and they also carried carnation bouquets.

Richard Stoll of Birmingham performed the duties of the best man. Seating the guests were John Campbell and George Algeo.

A floor-length gown of purple lace and taffeta was chosen by the bride's mother, Mrs. Yost's, corsage was of pink roses, accenting her mauve accessories.

Mrs. Beuthien was in blue satin and lace floor length gown with a matching hat. She also carried pink roses.

After a honeymoon in Northern Michigan the new Mrs. Beuthien will return to Ypsilanti where she is a senior at Michigan State Normal School.

The groom will travel to Fort Leonard Wood, Mo., where he is stationed with the Army.

French Prints and Work of State Artists at Cranbrook

Opening today at the Museum of Cranbrook Academy of Art and continuing through January 27 are two exhibitions, "Four Centuries of French Prints," and "Work in Progress, Michigan Artists."

"Four Centuries of French Prints" is an exhibit from the collection of George Binet of Brimfield, Massachusetts. It includes 76 examples, ranging in date from the 17th to the 20th centuries.

The prints have been selected to include not only the major names in French printmaking, but to illustrate the varying popularity and uses of the media involved.

In addition, this exhibition traces the development of style in the visual arts in general, proceeding from the Baroque and rococo of the 17th and 18th centuries through the various 19th century movements, including romanticism, impressionism and post-impressionism, and concluding with the modern movement of the School of Paris.

An interesting feature of "Four Centuries of French Prints" is the inclusion of the work of many artists who are better known as painters. Claude Lorraine, Fragonard, Renoir, Cezanne, Picasso and Matisse.

"Work in Progress, Michigan Artists," is an exhibition circulated each year by the Michigan Museums Council with the purpose of bringing the work of local artists to the interested public throughout the state.

This year's show contains 61 items, and includes paintings and drawings by Richard Will of Ann Arbor, embroideries and watercolors by Liselotte Moser of Detroit, ceramics by Irwin Whitaker of East Lansing and by Harvey Littleton of Ann Arbor, and jewelry by Howard Brown of East Lansing.

SHINING • TINTING • DYEING
SPECIALIZING IN REFINISHING and CLEANING SUEDE SHOES
JACK'S SHOE REPAIR
279 E. Maple MI 4-5730

Madame
If you are smart don't hesitate to wear the best in perfumes. Use the same care and judgment you do when choosing a dress, a hat or deciding on a piece of jewelry.

CARON GUERLAIN MARCEL ROCHAS SORTILEGE CHRISTIAN DIOR

LANVIN MOLYNEUX WORTH LUCIEN LELONG GERMAINE MONTEIL

LEON
147 PIERCE BIRMINGHAM, MICH. MI 4-0700-01

Have You Met . . . moved from Detroit in November. Mr. Marks is a sales engineer with the Weatherhead Company. He is a three year old son, Robert C. Jr., also owner of the Casa Roma.

LAMP SHADE SALE
20 to 50% Off
On Our Complete Stock of Shades
LAMP CORNER
1525 S. Woodward • Royal Oak
1 block N. of 10 Mile LI 3-4493

JANUARY SHOE SALE
All this season's styles from our regular stock—All nationally advertised!

1/2 off

• Queen Quality
• Johansen
• Greyflex
• Martinique
• Toni Drake

Regular to 12.95 Regular to 14.95 Regular to 21.95
\$7 \$9 \$11

Choose from hundreds of Pairs in wanted styles, colors and materials. All heel heights. Sizes 4 1/2 to 9, AAAA to B's. Come! Save!

SPECIAL!
Group of 240 pair women's Modercraft style shoes. \$8.95 value. Black, brown and green suede. Broken sizes.

\$3

SPECIAL!
Women's Sherline Mules. Regular \$3.95. **NOW \$1**

ALL SALES FINAL

miller's SHOES
Woodward at Maple



FOR FORMAL TEA OR CASUAL HOSPITALITY
...and the traditional simplicity of this beautiful service is so currently the fashion. Heaviest weight sterling with rich lustre finish, matching the famous Reed & Barton Pointed Antique flatware.

POINTED ANTIQUE

REED & BARTON Sterling Teaware

"THE BRADFORD"	\$785.00	Five Pc. Serving
"HAMPTON COURT"	\$575.00	Five Pc. Serving
"POINTED ANTIQUE"	\$405.00	Four Pc. Serving
"STRATFORD"	\$600.00	Five Pc. Serving

LARGEST REED & BARTON STERLING TEAWARE SELECTION IN THIS AREA

Also many other Sterling and Plated Services by the world's finest silversmiths.

COMMUNITY HOUSE CALENDAR

THURSDAY, JANUARY 10
6:00-7:30 p.m.—Family dinner (by reservation)
6:30 p.m.—Scoutmaster Club dinner
6:00 p.m.—Birmingham Senior
6:00-10:00 p.m.—Bridge class

FRIDAY, JANUARY 11
10:00 a.m.—Girl Scout Council
10:00 a.m.—Senior Center
12:30 p.m.—Girl Scout luncheon
6:00-8:00 p.m.—Bridge class
9:00 p.m.—Quadrille Club dance

SATURDAY, JANUARY 12
10:00 a.m.—1:00 p.m.—Lester Forum
6:30 p.m.—Present Day Club (of the Women Club) dinner

SUNDAY, JANUARY 13
9:30 a.m.—League of Women Voters Board
10:00 noon—Rotary Club luncheon
1:30 p.m.—Garden Club
1:45-2:00 p.m.—Scout Troop meeting
2:30-5:00 p.m.—Scout Troop meeting
6:00 p.m.—Girl Scout dinner
7:30 p.m.—Birmingham Credit Bureau
8:00 p.m.—Stamps Club
8:00 p.m.—Philips Sisters
8:00 p.m.—Scout Council

TUESDAY, JANUARY 15
10:00 a.m.—Lester Forum
12:00 noon—Exchange Club luncheon
1:30 p.m.—Scout Troop
6:30 p.m.—Kwanza dinner
7:00 p.m.—Kwanza dinner
8:45 p.m.—Scoutmaster Club dinner
9:00 p.m.—Scoutmaster Club dinner
9:00 p.m.—Beverly Hills Association
9:00 p.m.—Philips Sisters
8:00-10:00 p.m.—Junior League Arts and Crafts

WEDNESDAY, JANUARY 16
9:30-11:30 a.m.—Junior League Arts and Crafts
1:00 p.m.—1:30 p.m.—Brownie Leaders
1:30 noon—Lodge Club luncheon
12:45 p.m.—A.I.W. luncheon
2:30 p.m.—Scout Troop 42
9:00 p.m.—Quadrille Bridge

THURSDAY, JANUARY 17
6:30 a.m.—Musical Practice
10:00 a.m.—Red Cross Social Welfare Aid
12:00 p.m.—Newspapers Club luncheon

'Y' Announces Classes

The Northern branch of the YWCA announces a series of classes which include modern dancing, square dancing, bridge, interior decorating, bowling, ceramics, gym, swimming, dressmaking and pre-tailoring and millinery.

The classes are opening this week and next at the branch located at 13150 Woodward.

Furniture Prices
Sharply reduced during
Lewis Mid-Winter Sale
See These Outstanding Furniture Values
Contemporary or Traditional

LEWIS
Fine Furniture
235 Pierce St. Phone MI 4-4920
Pontiac Store 62-70 South Saginaw Street, Pontiac

Hours Daily 9:00-5:30
9 W. Maple
LAKE JEWELERS
"THE STERLING STORE OF BIRMINGHAM"
Friday 9 A.M.-9 P.M.
Midwest 4-5315