

# SEE HOW MUCH YOU SAVE

With These Food Values **WE GIVE** W. & W. Green Thrift Stamps

**CHOICE & PRIME SHOULDERS**  
**LAMB CHOPS**  
 Pound **89c**

**MEAT FOR HEALTHY APPETITES**

**STRICTLY FRESH GROUND BEEF** Lb. **67c**

**PRE-COOKED SMOKED HAM** Shank End Lb. **49c**

**CHOICE PRIME BEEF CHUCK ROAST** Lb. **75c**

**SLICED BACON** 1 LB. PKG. **49c**

**PORK LOIN ROAST** 7 RIB CUT Lb. **39c**

**FROZEN FOODS**

**You'll Go at your one STOP STORE FOR THESE BARGAINS**

**Farm Fresh EGGS** Grade "A" Medium DOZ. **54c**

**Breast Of Chicken TUNA FLAKES** 29c

**Standard Brand TOMATOES** No. 2 CAN **17c**

**Gold Medal FLOUR** 5 LB. BAG **49c**

**Premium Cloyer Bloom BUTTER** Lb. **84c**

**Aunt Jane's STRAWBERRY PRESERVE** 12 OZ. JAR **2 FOR 69c**

**Mott's APPLE SAUCE** 15 OZ. JAR **2 FOR 25c**

**Campbell's TOMATO JUICE** 46 OZ. CAN **29c**

**SNOWCROP ORANGE JUICE** 2 CANS **37c**

**SNOWCROP PEAS** 12 OZ. PKG. **2 FOR 43c**

**PET & CARNATION MILK** TALL CAN **14c**

**Dole SLICED PINEAPPLE** NO. 2 CAN **29c**

**DOLE PINEAPPLE JUICE** 46 OZ. CAN **29c**

**FRUITS and VEGETABLES**

**California FRESH DATES** Pound Box **29c**

**Tender Crisp CELERY** Bunch **23c**

**HEARTS** **23c**

**NORTHERN SPYS** Eating & Cooking **APPLES** 5 Lbs. **39c**

**Washed & Cleaned SPINACH** Bag **25c**

**South American BANANAS** 2 Pounds **29c**

**PEABODY'S Super MARKET**

154 HUNTER AT MAPLE • WE DELIVER • Free Parking Front and Rear of Store

OPEN EVERY EVENING EXCEPT SATURDAY SUNDAY HOURS—10 A.M. TO 8 P.M.

## Education Lecture Series Sponsored By School Board

Wilford J. Eiteman, University of Michigan professor of finance, will open the 1952 lecture series under the sponsorship of the Birmingham board of education.

Prof. Eiteman, like the five lecturers who will be heard, comes to Birmingham through arrangements made by the University of Michigan extension series. The series will start on Jan. 17, continuing through Feb. 21. All will be given in room 101 of Baldwin school, beginning at 7:30 p.m. Question periods are scheduled for each meeting.

The series, provided as a part of the city's adult education program, will have for the general theme, "Cross Currents in the American Scene."

**PROF. EITEMAN'S** topic will be "Personal Finance." On Jan. 24, Max Rutt, associate professor of psychology, will speak on "Psychology of Adjustment." "How dangerous is inflation?" will be the topic of J. Philip Wernette, professor of business administration.

On Feb. 7, Alvin F. Zander, associate professor of educational psychology, and program director of the research for group dynamics, will speak on "Group Life: Its Importance and Development." Michla Titus, professor of anthropology in the museum, will speak on "Racial Problems in America" on Feb. 14. The final lecture will see Morgan Thomas, assistant professor of political science, speaking on "National Corruption A Danger to National Government."

All meetings are open to the public.

## Modern Bird Paintings Showing at Cranbrook

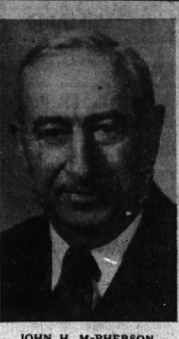
An exhibition of 21 paintings by modern bird artists has opened at Cranbrook Institute of Science. Works by George Miksch Sutton, Roger Tory Peterson, Athos Menaboni and Lee Jacques are among the 13 artists represented. The only Detroit area artist represented is Zoltan Sepesky who, though not identified in this field, uses birds occasionally as subjects. His painting here is a large watercolor, "Vulture in the European Zoo" and recently presented by him to the Institute.

The exhibition is open each afternoon through January.

## Frank Gidley Given Leave of Absence

Southfield Township Board Tuesday evening gave Building Inspector Frank Gidley a three-week leave of absence.

He is recuperating at home from injuries sustained in an auto accident Monday, Dec. 31 at Telegraph and 10 Mile roads.



JOHN H. McPHERSON  
 Birmingham Unitarian Program Will Feature Grosse Pointe Speaker

One of the charter members and organizers of the Grosse Pointe Unitarian church, John H. McPherson will be the guest speaker when the Birmingham group meets Jan. 14. He will speak on "Advancing the Unitarian Movement in Michigan," at the home of Mr. and Mrs. Merrill O. Bates in Bloomfield Hills at 8 p.m.

McPherson, who served as judge advocate on two general courts for the 32nd Division during World War I, was assistant attorney general, 1931-33.

He is assisting in reorganizing the Michigan Area Unitarian council and has served as treasurer for two years.

A short business meeting is planned when the Birmingham members will vote on a by-law and on joining the Michigan Area conference.

## Two Methodist Fives Win Church League Games

Embury and First Methodist Churches chalked up initial victories in the Birmingham YMCA church league with wins over Christ Church and Southfield United Presbyterian.

Embury Methodist trailed Christ Church 6 to 5 at the quarter but enjoyed a 13 to 8 lead at the half on baskets by Al Fawcett and Ron Rolph.

First Methodist met an inexperienced Southfield United Presbyterian team and won 42 to 7. Paul Ayers and Bob Gasser led the Methodist scoring with 14 and 13 points each, while Jack Mahlman scored five of Southfield's seven points.

Games Monday night pit Lathrup Township against Embury at Baldwin while Southfield U. P. takes on Christ Church and First Presbyterian meets First Methodist in the Baptist Church gym Tuesday.

## Community House Classes Listed

Registration opened this week for the winter series of the Adult Education program at the Community House. Mrs. Ewald E. Schaefer, director of the program, said that 11 regular courses will be offered when classes begin the week of Jan. 21.

Outstanding feature of this winter's activity will be formation of a square dancing club to meet the second and fourth Thursday of each month. Opening night will be Jan. 24. Art Carty is scheduled to instruct and call the dances.

**THE 11 REGULAR** courses are bridge, ceramics, creative writing, gardening, interior decorating, millinery, painting, sculpturing, sewing, silver making and weaving. In addition, if enough are registered, Red Cross courses in first aid and home nursing will be taught.

All classes, with the exception of gardening and the Red Cross courses, will be in session for ten weeks.

Further information about any class may be obtained by calling the Community House but registrations must be made in person at the House.

Birthdays, anniversaries, guests, births, parties are all newscall the society editor about them.



JOHONNOT TREE SERVICE  
 Phone LI 2-8132

## FIRE INSURANCE

THE BIRMINGHAM AGENCY  
 Phone MI 4-2422

## SPECIAL PRICES ON ALL JEWELRY

and **WATCH REPAIRS**

**KINCAID'S JEWELERS**

213 E. Maple MI 4-7830

## "SPRING IS TOO LATE!"

Trim In The Dormant Season  
**JOHONNOT TREE SERVICE**  
 Graduate Forester

## Fireplace Chimneys CLEANED

Over 40 years experience in cleaning and repairing defective fireplace chimneys and dampers.

**WE ALSO FURNISH CHIMNEY SCREENS FOR PROTECTION AGAINST SPARKS, BIRDS, SQUIRRELS, BATS, ETC.**

**Furnace, Boiler and Incinerator Chimneys Cleaned**

**J. C. Kinggo & Son** Ph. TY. 5-9210  
 8000 Linwood Detroit 4, Mich.

# BETTER USED CARS CLEARANCE

## Still Michigan's Finest Used Car Bargains

1950 Chevrolets	1950 Fords
15 To Choose From	Several To Choose From
COUPES	LOW AS \$1095.00
Power Glides	
LOW AS \$1195.00	
1949 Chevrolets	1949 Fords
Big Selection of Body Styles and Color Combinations	Coupes, Sedans, Club Coupes
LOW AS \$995.00	FROM \$795.00
1948 Chevrolet Sedan	1946 Ford 2 Dr.
Runs Good Needs Some Paint	Radio, Heater, Runs Good
FULL PRICE \$595.00	FULL PRICE \$495.00

200 More to Choose From—All Makes—All Models—All Prices

# NORTH-NORTHWEST CHEVROLET

WOODWARD AT 13 MILE ROAD

OPEN 9 A.M. to 10 P.M. WEEK DAYS