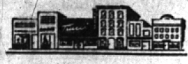


On the average, do not mothers make more little and big sacrifices for others than any other segment of people? They make them for their children... sometimes to the point of spoiling them! Mothers are excused because their hearts rule.

The Birmingham Eccentric



Bits of Birmingham

Local sport fans who plan to attend Michigan State football games next fall will notice quite a change when the Spartan marching band comes on the field. Band members will have spanking new green and white uniforms, replacing the military khaki now in use. The uniforms will have white accents, including cross belts, capes, white stripes on the trousers and convertible white and green hats. A green overcoat also comes with the outfit.

dent related that a child called her on the phone last Wednesday evening and asked her if she had any children. The lady mentioned that her 18 month old granddaughter was there and the child said, "I'm calling all mothers in my neighborhood and asking them to put their front porch lights on when the solicitors come around Thursday evening to get money for the polo drive." The resident said the child's voice sounded as if she was a first grader.

over the city. Probably several years from now, the sight of one of these craft won't cause any commotion. However, the novel appearance seemed very interesting to all viewers.

A fourth city has tentatively agreed to join the proposed South Oakland water authority. Last week the Berkeley city council approved the financial formula. Municipalities who previously have agreed to the proposal are Birmingham, Clawson and Royal Oak. Under the set-up, water would be piped into the South Oakland area from Detroit.

Many local children did a fine job in stimulating interest in the March of Dimes drive. One resi-

Quite a stir was created in the Birmingham area Thursday morning when a yellow helicopter flew

A rumor is rampant in Birmingham that a new national society is in the formative stages, right here in our own community. Come on, let's have a show of hands—how many women, young or old, are there in this community who would like to apply for charter membership in the National Society for the Addition of Longer Tails on Women's Blouses?

Local area alumni of Albion College will have an opportunity to attend the second annual reunion Dance of the Detroit Albion Alumni at the Harmonia society.

Telephone
Lincoln 2-0553-4
Jordan 4-6578

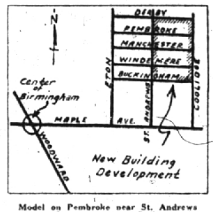
Fred Burton Abstract Company
Abstracts, Title Insurance, Escrow

23880 WOODWARD AVE.
PLEASANT RIDGE

BIRMINGHAM

Get both! . . . a good home . . . AND a good location . . . in this beautiful planned community, just a pleasant walk from Grand Trunk Commuters Station. Compare location . . . convenience . . . construction . . . "plus" features . . . AND price. You won't see home values like this anywhere else at this price! But, hurry! 35 more being completed for occupancy within 30 to 60 days.

255 Homes Sold and Occupied
PEMBROOK MANOR



Priced from \$13,495 to \$13,995

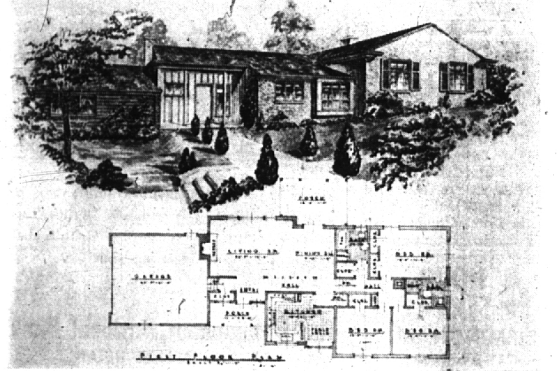
5 floor plans, 30 elevations
Face Brick
Large Lots
New paved streets
Full basements
Birch flush doors
Natural fireplace

AC heat
Tile in bath and kitchen
Steel casement windows
Dining space in kitchen
Automatic hot water

HOUSEMAN-SPITZLEY CORPORATION

Birmingham Branch, Southfield at 14 Mile Road
Phone Midwest 4-5722 or Woodward 3-4816. Evenings, UNIVERSITY 3-3067

TRI-LEVEL



Shirley Farms

This, as you can see, is the Architect's drawing. Beautifully designed to fit the land's contour, you'll be thrilled by its flexibility, adaptability and livability. A wealth of plus features include:

- Picture window with lovely vistas of rolling countryside and apple trees.
- "Dream" kitchen with breakfast bar, nook area. Disposal.
- Gorgeous contemporary details in living room.
- Approximately an acre assures your privacy.

Ready now for decorating, why not personalize it to augment your furnishings and individuality?

SNYDER KINNEY & BENNETT
INC.
Realtors

239 South Woodward
Midwest 4-7000

267 East Grand River, Detroit, Saturday evening, Feb. 9. Special guests will be Alton President Dr. Wm. Whittaker, Dean of Men Emil Leffler, Dean of Women Audrey Wilder and Alumni Secretary Kenneth Hollinshead.

With all the excitement of Birmingham high school students moving into their new building on Cranbrook road, the fact that this is the first mid-year in which there were no graduation exercises almost was forgotten. Including the present school year, all future commencement ceremonies will be held only in June. Last week marked the beginning of second semester.

Birmingham youngsters took the spotlight Thursday, as the March of Dimes drive was conducted, by coming forth with a few unusual reactions. David and Eleanor Lougee who had been printing the Neighborhood News until a few weeks ago, turned in \$1.10 which remained in the treasury after they disbanded. At 1826 Webster, the two children of Mr. and Mrs. William DeLee gave \$5 of their Christmas money while Diane, daughter of the Jack Erwins, 408 Smith, gave the solicitor a silver dollar which she had received as a gift from an uncle when she was but three years old. Diane now is 10.

In response to The Eccentric's customary "letter of welcome" to newcomers, plus several free issues, we are pleased to print a typical "thank you" . . . this time from John M. Ruddy, 2525 Windemere. He wrote: "Our thanks for your letter of welcome, and for free issues. We've already gotten acquainted with The Eccentric, and have enjoyed its thorough coverage of local news. We're both looking forward to learning more about Birmingham through the pages of your outstanding Eccentric." Thanks, Mr. (and Mrs.) Ruddy for the nice note.

Mrs. T. B. Gilliam, 1421 Henrietta, reports that her daughter, Mrs. Nancy G. Leitch, a former local resident, now lives in Harlingen, Tex., and has joined the staff of the new radio station, KSOX. It is the only 50,000-watt station in the Rio Grande Valley. Mrs. Leitch is writing radio advertising, conducts her own daily program of original songs and presents women's programs of the news. Program is called "Meanderin' with Mary". Furnishings for the new station were imported from Haiti, complete to parrot in the reception room. The station is a member of the Mutual network.

Word seems to be spreading fast concerning Birmingham's use of radar for speed control. Sunday afternoon, Detroit sportscaster Van Patrick commented on his television show, "We made very good time this morning coming down from the north country. It only took us three hours and 45 minutes. However we didn't keep that rate going through Birmingham."

Birmingham high school basketball fans will have a happy time the evening the first cage game is played in the new high school gymnasium next season. Because the gym isn't yet completed, the three remaining home tilts are scheduled for the Baldwin gymnasium. One of the most critical descriptions of

the Baldwin gym this Wanderer has seen published in The Royal Oak Tribune Saturday. In the story which was written by the writer until it stated, "The game was in Birmingham's handbox gym—a notorious chamber of execution for unwary, overly ambitious visitors."

There's an up and coming young master of ceremonies in town who found himself a perfect straight man on The Eccentric staff one day last week. The future MC became bored waiting for mother to finish her business, and wandered into the shop; returning in a moment he casually remarked that the men out there were busy as bees. Our straight man bit and asked the lead question, "Why, what are they doing?" "Buzzing around the machines!" came the quick-as-a-flash answer.

The world surely has changed! In a lecture, turned in \$1.10 which Wanderer heard a clerk ask a customer if that was the smallest bill he/she had left; nearly everyone else, we are attracted to cold cash and turned to look. Standing there smiling broad and handing out a fifty dollar bill, was a little girl of perhaps seven! And we can remember when one lone dollar was big money!

Jam-packed schools come up with things such as part-time class schedules and unusual timing. Until part of the students were moved into Baldwin elementary school last week, the Adams staff had to figure out a time schedule for toilet facilities, having certain groups of youngsters designated to go to the toilets at certain times.

Chuck holes in pavements in various sections of Birmingham are causing much concern to local motorists. One local resident told this Wanderer yesterday, "I was driving east on West Maple and coming toward the bridge over the Louge. A truck was coming toward me. Both of us were trying to avoid the deeper chuck holes. Suddenly I had to swerve off the pavement to avoid either being hit by the truck or smashing into the bridge." (Memo to City Manager east on West Maple and coming toward the bridge.)

News copy submitted early necessarily is given preference over late items. So the "Early Bird" usually gets the space.

INSURANCE - BONDS
THE BIRMINGHAM AGENCY

INSURANCE for EVERY NEED
Phone MI 4-2422
106 S. Woodward - Birmingham
Chas. B. Randall
Owen P. Peterson
AFTER we SELL we SERVE

QUALITY BUILDERS
WALTER H. DESIMPEL and SON
GENERAL CONTRACTORS
30 years of satisfied customers
Residential and Commercial building, also remodeling.
Specializing in Birmingham and Grosse Pointe areas.
Midwest 4-8151 Jordan 4-6674 Tuxedo 2-3219

A MILLER COLONIAL

17825 KIRKSHIRE — IN BEAUTIFUL GOLFHURST
1 Block S. of 14 Mile — 1 Block E. of Southfield

This lovely three-bedroom Brick Colonial is ideally located on a corner lot. It has a 23-foot living room with large picture windows at each end and natural fireplace; an around-the-corner dining room with built-in glass-door china cabinets; a cheerful step-saver kitchen with steel cabinets, and many other outstanding features.

You'll fall in love with the tall staircase window; the novel floor plan both upstairs and down; and the easy access to any part of the house from both front and side grade doors. And, of course, it's Miller-built with quality workmanship and materials. You'll like your neighbors, too, in this controlled community. Open noon till dark, or call at our Birmingham office—

MILLER HOMES, INC.
Woodward at 14 Mile Road
Jordan 4-6182

ON ONE FLOOR . . . and DELIGHTFUL



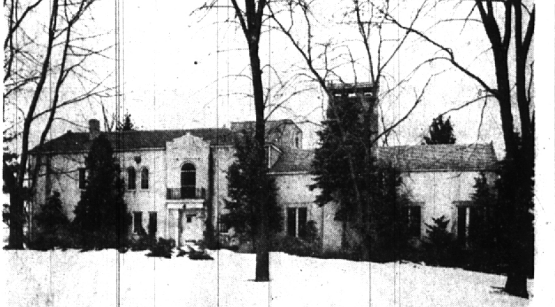
The ease of one floor living . . . in an all brick home just outside Birmingham. Spacious rooms . . . and not too many of them . . . a home you can care for yourself.

- Living room . . . fireplace . . . view window into garden.
- Library . . . paneled . . . 12x16 with fireplace.
- 2 fine "twin" size Bedrooms . . . tiled Bath.
- Fine Kitchen . . . extra Lavatory.
- Screened Garden Porch . . . roomy closets.
- Lot 130x130 . . . nice planting.
- Taxes only \$199 . . . Heating \$150 annually.

Brand new carpeting in principal rooms . . . Beautifully decorated . . . Ready for you to move in. The price is surprisingly low. Let's see this attractive new home today!

CALL
MAX BROOCK INC.
REALTORS
ESTABLISHED 1914
300 S. Woodward Ave. Midwest 4-6700

A LOVELY HOME IN A BEAUTIFUL SETTING



Vaughan Road, Bloomfield Hills

If you would give to your family the charming background of a real Bloomfield Hills home, you should consider this offering.

The house, of true Italian architecture, is solidly built with masonry walls and a roof of rich red tile. Located at the very top of a long slope, it affords a splendid view over a part of the Cranbrook scene.

The interior is generous in all its rooms. A studio-type living room is 24 x 32. The great hall measures 16 1/2 x 20. Library 11 x 14. Two bedrooms and bath offer a great convenience on the first floor. On the second floor are three charming family bedrooms and two baths, plus servants' quarters.

The heating system is modern and up-to-date. An excellent water supply is assured. The 3-acre site is beautifully landscaped with large evergreens, elms and willows.

The family looking for a fine home in the Hills, convenient to Cranbrook, Kingswood or Vaughan Schools should not fail to inspect this desirable home. The price is indeed low.

WATT, MANUEL & SNYDER, Inc.
Realtors
There is no substitute for Integrity
298 S. Woodward Midwest 4-6300