

Sunday Sermonette
A Continuing Series by
Local Religious Leaders

**The World
And The Christian**

By The Rev. Leslie A. Bechtel
Minister, Kirk in the Hills Presbyterian Church

"You shall receive power—and you shall be my witness—to the end of the earth." Acts 1:8.
Christianity has two basic affirmations, one, that when a person becomes a Christian there is a new dynamic in his life, and two, that this new power is not for self service only.

We have a right to enjoyment and blessing of the new spirit within but we have no right to monopolize it for ourselves alone. Christianity means life giving, life investment, life sharing. "Whosoever would be great among you let him be your minister".

The church may be the beginning place for this application of power and the church needs such service. All honor to men and women who give themselves so freely to leadership, teaching and plain hard work in their own church. But we dare not stop with our own church. A church can be just as selfish as an individual and belong to the devil more than to God. Any church reserving the power of its people for its own sake does not deserve the name of Christ. We have His word, spoken again and again, that the field is the world and our only ultimate horizon "all the world" and "every creature".
Our own congregation today should thrill at the thought that shortly we will have a minister in India as well as at the Kirk, a teaching minister who will seek to befriend and help the students at the Allahabad Articultural Institute.

BUT WE DARE not keep this power within the church. Our marching orders do not permit that. We have an obligation in every phase of human life and in every place. We must invest this power in our communities. We must answer the call to serve in our schools, on board of trustees, in PTA organizations, in all groups whose power is the enrichment of human life. We cannot be in all of them, of course, but we have a responsibility to be in some of them.

The Christian has an obligation in politics. We are not justified in standing on the side lines, hurling our criticisms and epithets to those who are carrying the ball, however poorly. The Christian has a definite commitment to assume leadership, yes, even to seek it. If character is the first qualification for leadership, surely those of us who claim to live the Christian life and serve its ideals cannot remain outside. Our very claim demands our participation both as consistent voter and as candidate.

BUT EVEN wider than this, each one of us must find some place in the church and without, power and in uniform, or nameless and in the ranks, where we

REV. L. A. BECHTEL

serve the highest life of the world. Our Christian power is given us for service to mankind, regardless of race or creed or place. Without waiting for crises or orders, on our own initiative, we must seek some needy place and cause, and invest the talent and the power that are ours. And by the quality and the quantity and the spirit of our service we will finally be judged.

"He that hath done it unto the least of these, my brethren, hath done it unto me".

Kirk Plans Open House To Show New Quarters

An open house is planned for the Kirk in the Hills Presbyterian church on Feb. 20, beginning at 7:30 p.m.
Rooms in Cedarholm, the present building, and those already completed in the new building will be open for inspection.
During the program, colored slides, showing the old Kirk in the varied locations of the four seasons will be shown.
Church deacons are in charge of the refreshment hour.

LEGAL NOTICES

CITY OF BIRMINGHAM MICHIGAN NOTICE TO PROPERTY OWNERS

MELTON-SHEFFIELD PAVING
The City Commission of the City of Birmingham will meet February 18, 1952, at 8:00 P.M. in the Commission Room in the Municipal Building to consider any objections to the construction of certain improvements known as Melton-Sheffield Paving, described herein, and to the creation of a special assessment district, created to defray the cost of construction of:

Paving on Melton and Sheffield.
The Commission proposes to create a special assessment district to defray the cost of this construction and said special assessment district shall consist of the following described property:

- Sheffield Estates No. 1
- Lots 274 and 275
- Lots 276 to 282 inclusive
- Lots 283 to 289 inclusive
- Lots 290 to 296 inclusive
- Lots 297 and 298
- Lots 299 to 305 inclusive
- Lots 306 to 312 inclusive

Plans and estimate of cost of this project are on file with the City Clerk of the City of Birmingham for examination by the public.

IRENE E. HANLEY,
City Clerk.
February 5, 1952. (47-48)

CITY OF BIRMINGHAM MICHIGAN NOTICE TO PROPERTY OWNERS

YOSEMITE-VILLA PAVEMENT
The City Commission of the City of Birmingham will meet February 18, 1952, at 8:00 P.M. in the Commission Room in the Municipal Building to consider any objections to the construction of certain improvements on Yosemite Villa Road, described herein, and to the creation of a special assessment district created to defray the cost of construction of:

Paving on Yosemite and Villa Roads 22 1/2 to 26 1/2 blocks from the intersection and extending from the east front of city line to the east front and connecting with the pavement on Elm Road.

The Commission proposes to create a special assessment district to defray the cost of this construction and said special assessment district shall consist of the following described property:

- Lots 40 to 47 inclusive
- Lots 48 to 55 inclusive

Plans and estimate of cost of this project are on file with the City Clerk of the City of Birmingham for examination by the public.

IRENE E. HANLEY,
City Clerk.
February 5, 1952. (47-48)

TELEVISION SERVICE

We service Birmingham, Bloomfield Hills, Royal Oak and adjacent communities

Call Midwest 4-1814
MILKS APPLIANCES
1435 S. WOODWARD

Baptist Women to Greet New Members At Tea
Mrs. Wayne Brenkert, chairman of the membership committee for the First Baptist church, will present new members and their sponsors when the women's Circles meet Thursday at the home of Mrs. Fraser E. Pomeroy, 1320 Dorchester.
Mrs. Manson Hillman will be chairman of the tea which is to be from 2 to 4 p.m. Mrs. Edwin Mink, group president, will greet members.
A program of special music is planned for the afternoon.

If you lose an article in this area and want to find it, there's no better way than to use an Eccentric "Lost & Found" Classified Ad.

What's Being Planned By BIRMINGHAM CHURCHES

Copy for the church page must be in The Eccentric, office, by 3:30 p.m., Thursday.

First Methodist

Mrs. Richard Featherstone will open her home, 593 Pierce, for the 8 o'clock meeting of the Wesleyan group next Tuesday evening. Hostesses will be Mrs. Richard Hamester, Mrs. Herbert Lugers and Mrs. Thayer M. Cowman.

Presbyterian

Two guild meetings are planned for Feb. 28. The Susan Trowbridge group will meet with Mrs. E. F. Schafer, 603 Safford, while the Elizabeth Trowbridge and meets with Mrs. Burley Laurimore, 1755 Melbourne. Each will schedule a 1 o'clock luncheon.
Missionary A has scheduled its meeting for 2 p.m. on Feb. 20, at the home of Mrs. H. H. Kendall.
A 1 p.m. luncheon that day will mark the meeting of Missionary B at the home of Mrs. E. W. Seeholm, 856 Kennesaw.

"Regional Verse and Prose" will be given by Mrs. Carl Binkle. Apron material will be turned in here, also.

Kirk In The Hills

A 12:30 luncheon is planned by the Women's association for next Thursday. A program and business meeting will be held. Luncheon will be in charge of Mrs. Herbert Woolson, Mrs. W. K. Trogan, Mrs. Thomas LaVeque, Mrs. Gordon Robertson and Mrs. C. A. Jackson. Mrs. L. A. Bechtel will present the program with Mrs. Karl Scott conducting the devotions. Robert Fehse will moderate a panel discussion.

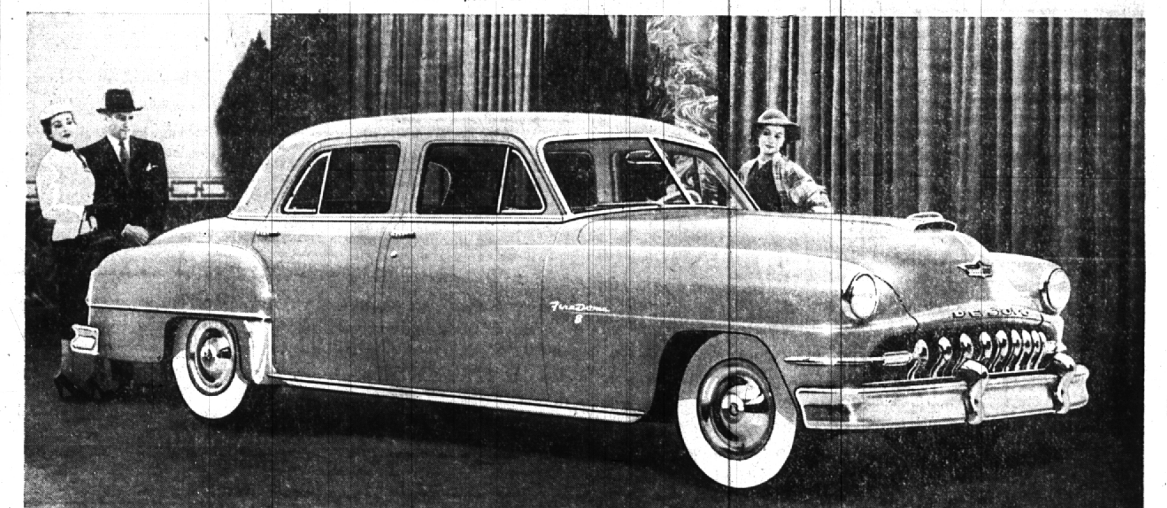
Church Convention

Miss Gertrude Bechtel, director of Christian education at the Kirk in the Hills Presbyterian church, attended the directors' national association meeting in Columbus, Ohio, Feb. 8-11.

SUNDAY SERMON TOPICS

Sunday, Feb. 17
First Presbyterian
"When Life Confuses A Man" will be the sermon topic of the Rev. W. Glen Harris, Ph.D., at both the 8:30 and 11 o'clock sermons Sunday morning.
Christian Science
"My soul shall be joyful in the Lord; it shall rejoice in his salvation," is the text of the sermon on "Soul" which will be heard at this church Sunday.

**DESOTO FIRE DOME
NOW ON DISPLAY!**



Come see the car with America's most revolutionary engine design. It's sensational!

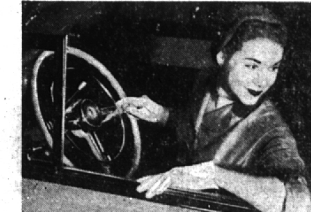
TREMENDOUS NEW POWER! Biggest engine advance in a generation... 160 horsepower... terrific acceleration and cruising performance on regular fuel!

TREMENDOUS NEW FEATURES! Try new Power Steering... it's unbelievable! Super-safe Power Brakes. No-Shift Driving. Electric Window Lifts. Lots more!

DESOTO HAS POWER STEERING!
It's absolute magic! Now you can turn the wheel with one finger... easy as dialing a phone! Hydraulic power does the work for you. Parking is child's play. Come try it!

NEW, UNIQUE AIR-VENT HOOD!
Look at the new De Soto above... note the Air-Vent that directs air to carburetor. This helps increase engine power!

FIRE DOME has famous dome-shaped combustion chambers with centralized spark plugs... the engine design that gets more power from every drop of gas. This new De Soto will be the most talked about car of 1952.
SEE IT TODAY!



W. A. CALTRIDER, INC.
912 SOUTH WOODWARD BIRMINGHAM PHONE MI 4-7811 or JO 4-6065
Don't Miss GROUCHO MARX in "You Bet Your Life"... Presented by DESOTO-PLYMOUTH Dealers on both Radio and Television (NBC Networks)... See Newspaper for Time and Station