

**UNDERWOOD TYPEWRITER** ROYAL REMINGTON  
SALES, SERVICE AND RENTALS  
Burdoughs Adding Machines  
Office Supplies  
FORBES PRINTING and OFFICE SUPPLY  
415 E. Frank St., cor. Ann  
Midwest 4-2224

**Bowlers Have Day In Alibi League**

The Ladies Alibi bowling league came up with two unusual feasts on November 21 while bowling at the Birmingham recreation. Shirley Nichols, rolling for the Azar Jewelry team, hit three games of 107 each but still fell short of her 111 average. Gloria Fish, a member of the Triangle Furniture team, converted the 6-7-10 split. Gloria's average is 131.

**Year's Lowest Building Recorded for November**

Building hit a new low in Birmingham during November when only 39 permits were issued by the building inspector's office. Costs of construction held second place, \$13,045 topping the \$274,655 for March by only a few thousand. As usual, the lion's share of permits were for single family dwellings which accounted for 20 with an outlay of \$279,000. Alterations on 5 single dwellings were set at \$9,500; new garages and garage alterations were placed at \$9,545, with alterations on two business places at \$15,000.

**Plants Are Important To Home Decorations**

By ALICE WESSELS BURLINGAME  
From now on, during the winter season, house plants will be king to many of us. With the new ideas in architecture the house plant, and the texture it will give to room decoration, becomes important to a designer before a room is completed.

Many rooms incorporate planter boxes as a part of the architectural scheme. It is very important that, even though they are placed with caution by the architect, depending on window exposure and shadows from trees and close structures. Light is important for the welfare of growing plant material to the green of the leaf. Fluorescent lights may be used to supplement lighting of a plant box but one important factor is often forgotten by the contractor. If those plants are in an arway where there is no natural light they will need 14 hrs. of fluorescent light. This should be controlled by a time clock which is not expensive. The supplementary light goes on at 6:30 a.m. and off at 11:30 p.m.



SHEILA SKLAR, who was awarded top honors this year by the Michigan Forensic Association for dramatic declamation, releases with Bob Whitlatch, Birmingham, for their leading roles in "House-master", a lively comedy on English boarding school life to be presented by Ergasterion, Cranbrook School drama society, on December 3 and 6.

**GIVE A HOBBY GIFT**

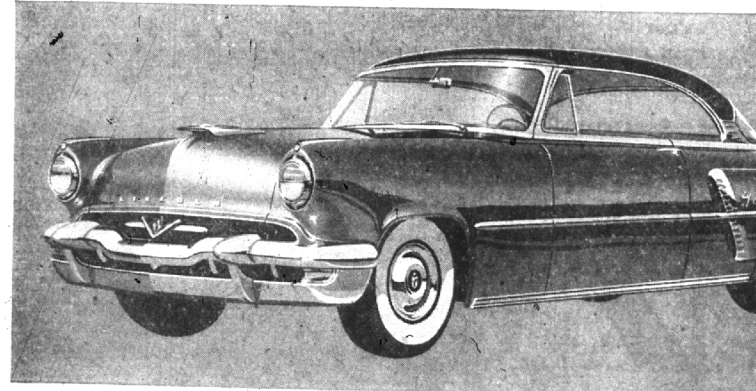
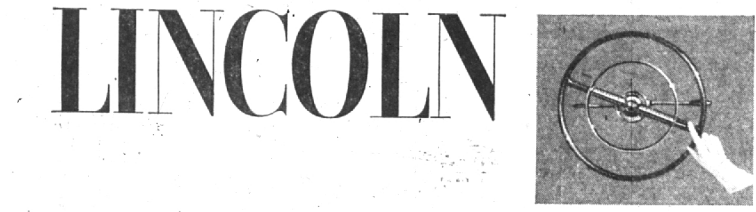
FROM **AUSTIN'S** SINCE 1888 GIFT S  
Michigan's Finest Selection of Wallpapers Custom-Mixed Fashion-Right Paints  
Open Friday & Saturday Evenings  
W. 12 Mile Rd., just East of Post Office, Berkley Phone LI 1-6070

**TWO 40 WATT fluorescent tubes (daylight)** will do nicely and there should be a shield to diffuse the light downward. This schedule will cost about \$3.35 per month. Fluorescent light is a cold light, without heat from the tube. The installation should be about two feet from

**205-HORSEPOWER V-8 ENGINE**  
from the world's greatest builders of V-8 power plants. New and incomparable performance with incredible surge and response at a toe-touch. Overhead valves, new four-barreled carburetion, and new high-efficiency intake system. Plus dual range automatic transmission, standard equipment.

**POWER STEERING**  
combined with exclusive Lincoln ball-joint front wheel suspension. Lets you turn the wheel effortlessly at a standstill and yet gives you perfect "road feel" at all times. Makes parking a pleasure. Makes all-day driving a delight. No back spin—no lock-up, even over road bumps and mud.

**First Showing Today The New 1953 LINCOLN**



**Powered to leave the past far behind**

YOU HAVE dreamed of such a car... a car that all but drives itself. Dream no more—for today, such a car comes to life in the new Lincoln for 1953. Now, for the first time, power can take over your driving. Power is in the steering wheel... and controls the brakes. Power adjusts the front seat back and forth... and even up or down. And you'll find astonishing acceleration in the new 205-horsepower, overhead valve V-8 engine. This is purposeful, functional power to make your driving far more related than ever before. This is power in the same modern living spirit that you sense in Lincoln's clean, graceful, ground-hugging lines. In the glass-visibility. In the luxury of exquisite fabrics and leathers. This is excitement that happens once in a motoring age... and it's happening today in our showrooms. We invite your inspection. We invite you to arrange for a demonstration drive in either the Lincoln Cosmopolitan or the Capri. Lincoln Cosmopolitan and Capri—crowning achievements in the fine car field on the occasion of Ford Motor Company's 50th Anniversary.

**LINCOLN** — THE ONE FINE CAR DESIGNED FOR MODERN LIVING — COMPLETELY POWERED FOR MODERN DRIVING  
Don't miss the big television hit, "TOAST OF THE TOWN" With Ed Sullivan. Sunday evening, 8:00 to 9:00, Station WWJ-TV, Channel 4.  
**LINCOLN MERCURY**  
850 SO. WOODWARD  
**TOM MCDONNELL, INC.**  
AUTHORIZED LINCOLN MERCURY DEALER  
PHONE MI 4-1900 or JO 4-6179

**THE QUESTION** "How often should I water my plant in winter?" will have to be settled by you as the answer is dependent upon the humidity of the room, the variety of the plant, and how much you water at one time. Therefore, when you have leaves beginning to turn yellow you will know that you have watered heavily.

The reason it is desirable to place peat moss in the planter while plants remain in the pots is fading generally you will know that it is "yelling" for natural light. It isn't any easier for you to give it a treat once in a while, placing plants in an east or south window. After the first of the year you may have pots of flowering bulbs. After they have come into bloom they can be incorporated in a planter and really spice it up. Placing the plants directly into the soil asks for trouble from my experience and I have made it my business to analyze installations for you. After a planter is completed I go one step further and place neat markers in front of the plant with its name on it. Such a practice provides visual education for family and friends. If you use a vertical stick you begin at the top and on the left side letter downward so that it can be read without a twist of the head.

**IF YOU OWN** at you might want to skip the idea of a planter incorporated in your architectural scheme. Plan on your plants remaining as individual specimens. Cats like to climb large leaf philodendrons and make themselves generally at home when there is a planter box. More plants die from over-watering than any other reason. Most are better on the dry side. This is especially true of geraniums. For good watering every five days should be sufficient for them. If you have brought geraniums from outside, inventory your treasures. Is there one with a straight central stalk? If so, secure a stick about four inches higher than the tallest leaf and with a sharp knife remove all of the side branches. Insert the stick beside the trunk, tie a couple of times for support and now you have a geranium tree which will turn your yard treasure for the garden in 1953.

**LEGAL NOTICES**  
STATE OF MICHIGAN—ORDER OF THE CONSERVATION COMMISSION—REGULATING FISHING IN CERTAIN WATERS  
The Conservation Commission, by authority of Act 210, P. A. 1925, as amended, hereby orders that for a period of one year from January 1, 1953, there shall be unlawful, except as hereinafter provided, to take fish in the following waters:  
Harrisville Hatchery ponds, 231 Lawrence D & M Railway and hatchery building, Alcona County.  
Bates Pond, Section 19, T 3 N, R 8 W and Cooks Pond, Section 21, T 3 N, R 9 W, Barry County.  
Berry Pond, Section 34, T 5 S, R 15 W, Barry County.  
Wilder Creek Pond, Sections 8 and 9, T 4 N, R 12 W, Calhoun County.  
Burke Lake, Section 23, T 3 N, R 1 W, Clinton County.  
Grawn Pond, Section 25, T 26 N, R 13 W, Grand Traverse County.  
Ponds Nos. 1 and 2, at the Hilldale State Fish Bearing Ponds, Section 25, T 4 S, R 3 W, Hillsdale County.  
Ionia Pond, Section 21, Section 30, T 7 N, R 6 W, Ionia County.  
Gully Pond, Section 9, T 22 N, R 4 E, Ionia County.  
Portage Creek and tributaries including Portage Pond, Ionia County.  
Belmont Pond, Section 13, Section 15, T 3 N, R 11 W, Kent County.  
Promont Pond, Section 24, T 30 N, R 28 E, Section 20, T 30 N, R 28 E, Leelanau County.  
Manistowic Pond, Section 17, T 22 N, R 12 W, Manistowic County.  
Held Mountain Trout Pond, Section 19, T 2 N, R 11 E, Oakland County.  
Davybark Trout Pond, Section 14, T 2 N, R 11 E, Oakland County.  
Fenton State Fish Bearing Ponds Nos. 1 and 2, Section 4, T 4 N, R 7 E, Oakland County.  
West Branch Pond, Section 3, T 22 N, R 2 E, Ogemaw County.  
Sloan Pond, Section 4, T 2 S, R 2 E, Washtenaw County.  
1. Fishing shall be lawful during the statutory trout season.  
2. Except on Gully Pond fishing shall be limited to the period from one hour before sunrise to one hour after sunset. On Gully Pond fishing shall be limited to the period from 12:00 noon to 12:00 midnight except on Saturdays, Sundays and holidays when it shall be permitted from 6:00 A.M. to 12:00 midnight.  
3. Artificial flies only may be used.  
4. No boats or rafts shall be placed on or used in the ponds or streams.  
5. The daily limit shall be two trout except that in Grawn, Gully, Promont, Sloan, Manistowic, and West Branch ponds it shall be five trout for ten ponds and one trout.  
6. On Ponds Nos. 1 and 2 at the Hilldale State Fish Bearing Ponds and on Gully Pond each angler shall submit a daily fishing report on forms provided at the ponds.  
Signed, sealed, and ordered published this tenth day of December, 1952.  
HAROLD W. GLASSEN, Chairman  
F. D. STRUHSAPFER, Secretary  
Countersigned:  
GEOALD E. EDDY, Director of Conservation. 38-29-40

**NO MATTER WHERE I SERVE MY GUESTS**  
IT SEEMS THEY LIKE MY KITCHEN BEST  
Holiday time is almost here, your kitchen will be the busiest place in the house. See us for new floor coverings and counter tops.  
LINOLEUM TILES PAINTS  
EXPERT INSTALLATION  
**T. E. HOGAN CO.**  
2865 WOODWARD AVENUE  
BERKLEY (3 Blocks S. of 12-Mile) LI 4-3300

**CHRISTMAS CAROLS**  
Robert Shaw Choral Vol. 1 - II  
Merry Christmas—Bing Crosby  
Twas the Night Before Christmas—Fred Waring  
Christmas In the Air—Walter Schumann Chorus  
Trapp Family Singers  
Christmas Round the World—Mariners  
Carols On Organ and Chimes

**RECORDS**  
The Merry Toy Shop  
Rudolph the Red Nosed Reindeer—Gene Autry  
I Saw Mommy Kissing Santa Claus—J. Boyd  
Christmas Fantasy—Leroy Anderson  
Christmas Song—Nat "King" Cole  
Jingle Bells—Guy Lombardo  
12 Days of Christmas—Fred Waring

**When In Doubt—May We Suggest A GIFT CERTIFICATE**  
From The RECORD CORNER  
**MERRY CHRISTMAS—Elaine & Connie**  
Phone MI 4-3933  
**Leonard's**  
162-166 W. Maple