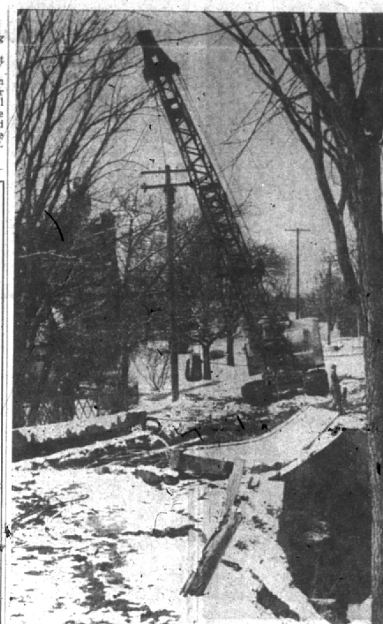


Suggests Repainting Of Commission Room

Birmingham's city commission room can be made more attractive and useful if its walls were painted an off-white color, Commissioner Frank Rising insisted this week. Rising then suggested that if the city could find the money, it should purchase a new, large, more readable city map for use by the commission and the audience during discussions. Egbert said he would see what could be done about that, too. Several months ago, commission room walls were washed, after Rising had suggested it. Removal of the soot and dirt permitted the original wall color to show, and this color perhaps can best be described as a faded yellowish-brown.



WORKMEN STARTED REMOVING the old West Maple bridge last week to eliminate the last traces of the narrow West Maple pavement that was abandoned this summer when the new roadway was open. The heavy work on the Taylor Brothers Construction company's crane is making short work of the wrecking. (Eccentric Staff Photo)

"Someone lovely has just passed by!"



D'ORSAY
Above all, she'll adore D'Orsay's newest parfum creation from Paris. Its heavenly fragrance praises your own good taste, ever whispering "Someone lovely has just passed by!"
Parfum 5.50, 10.00, 18.50
Parfum Pouchette 3.00
Eau de Toilette 3.00 and 5.00
Solid form Eau de Toilette 1.75
ALL PRICES PLUS TAX

Wilson's TOILETRIES DEPT
PHONE MI-4-5600



Sheaffer's Cligper™
Threesome, \$30.00

Sheaffer's "SNORKEL"

- ★ FILLS WITHOUT "DUNKING"
- ★ NEVER NEEDS WIPING
- ★ WORLD'S CLEANEST PEN

Brand New—And Just in Time for Christmas

No one has ever received a gift like this! Come in and see how this amazing filling tube reaches out to draw in its own long-lasting ink supply. Test it yourself—then decide who will be the lucky someone to own this gift on Christmas morning! Priced from only \$12.50.

WILSON'S
WOODWARD AT MAPLE

To Avoid Fire, Use Common Sense During Holidays

Fire Chief V. W. Griffith this week lists another means by which Birmingham residents can avoid becoming statistics on the national summary sheet of holiday deaths. "It's really quite simple," he said, "and means only that everyone should make the Christmas tree in his home a safe one." Griffith pointed out that a fresh or "moist" tree will burn, but not with the explosive swiftness of a tree which has dried out. "Careless smoking, improper wiring or even the heat from an electric bulb can turn one of these over-dried trees into a flaming torch," the fire chief said.

December 18, 1952 THE BIRMINGHAM ECCENTRIC Page 3

A FEW common-sense precautions can avoid this and keep your Christmas merry instead of turning it into a tragedy.

In addition to purchasing a fresh tree, Griffith advises all to provide a stand which permits an adequate supply of water for the tree at all times.

Then, see to it that smokers keep matches and lighted cigars, cigarettes and pipes away from the tree. Plenty of ash trays will be one step toward this goal.

KEEP THE TREE away from any fire place and open stair well. If near the latter, should a fire break out, the upswEEP of heated air will carry flames to the second floor and add to the hazard.

New light cords are well worth the cost, since they eliminate entirely the chance of bare wires. Tree lights should be placed so that no bulb can touch the needles at any time.

Griffith said that although several chemical wreaths on the market which supposedly will lower the fire hazard, none have been proven to be a definite help. This includes many sprays which are reported to fire-proof trees.

"ANOTHER common-sense precaution is the immediate removal of all wrappings as soon as gifts are opened. This debris nearly always collects under the tree, and is a wonderful landing spot for a stray spark... and sudden destruction of a home, perhaps of human lives."

As a final precaution Griffith urged everyone to remove the tree by the first of the year and above all, not to burn it in the fireplace or furnace.

Aboard Attack Carrier

Richard J. Granda, aviation structural mechanic third class, USN, son of Mr. and Mrs. Joseph J. Granda, 508 Ann, is serving aboard the attack carrier USS Oriskany with Carrier Task Force 77 off Korea.

To buy or sell a used automobile, read and use Eccentric Classified Ads.

NATURE NOW History of the Ages Revealed by Fossils

BY LYDIA KING FREHSE
Special Writer for The Eccentric

We continue our trip through Smithsonian Institute as we enter the hall of plant fossils. Because plants are fragile of leaf and petal, many of their tissues are too soft to leave an imprint and therefore the record is less complete than that of fossilized animals.

Again, we can stop but briefly to mention typical groups. The oldest plant fossil is a much disputed piece of limestone holding the sections of a primitive seaweed, which was first thought to have been an animal. If you travel in Glacier Park you can see similar formations which have risen from the ancient seabottom to a 6,500 foot elevation.

In the beginning of earth's history eons of time passed with no land plants, but the Carboniferous Period (290 million years ago) has left us an amazingly clear record of the lush greenery which clothed the ancient swamps. The imprints of many of these plants have been dug from coal mines and often the smaller specimens are enclosed in balls of slag.

The fern family reached a high peak of diversity. One can trace, with inquisitive finger, the curious patterns of the tree-stem trunks of clubmosses, horsetails, and cycads. These are almost identical with their dwarfed remnants which still populate our earth today.

THERE ARE cases of perfectly preserved leaves of the trees of Tertiary times, ancestors of our modern flora. Many of these come from the shales of Florissant, Colo., and Green River, Wyo. Among them are sassafras, willow, tulip, myrtle, magnolia, birch, and poplar.

Beyond these are many huge stumps of the ancient evergreens which made up the petrified forests of Arizona and Washington. Due to an unusual set of circumstances, only a few fossil flowers have been found. Their frail imprints intrigue us with conjectures of their possible fragrance and color when they bloomed unseen. I saw again the small five-petaled flower from the Tertiary, (mentioned in a previous column.) There is another displayed which belonged to the nightshade family.

On the second floor in one of the hundreds of drawers where the study collections are kept, my paleobotanist friend showed me the unmistakable imprint of a tyranosaurus bloom which was alive more than 50 million years ago.

I left by the central hall where the spectacular remains of extinct reptiles and mammals are housed. It is a humbling experience to stand thus dwarfed, facing the giant dinosaur Diplodocus, 70 feet long and 12 feet high. He is flanked by the skeletons of many another of his flesh-or vegetable-eating relatives.

ON THE OPPOSITE walls are restorations in their natural habitats of reptiles which dominated the earth for a period of 140 million years. Here too is the fossil record of the horse from little eight inch colicippus of 50 million years ago to his relative of modern times.

tilian hoards until they became the ancestors of our modern mammals. The end of the wing is devoted to extinct animals, including the woolly sloths and the mastodons. The latter lived as little as one million years ago, so that some specimens were frozen into our present day ice caps where they have been found in a perfect state of preservation.

I left the great hall which holds the indisputable evidence of life's slow but upward climb with a kind of proud elation, satisfied with man's ability to wrest secrets from dust and stone.

And as I went down the long steps and out into the winter twilight, I thought "How brief yet how poignant is the pause which my own life represents in that eternity which we call Time!"

General news deadline is 4:30 p.m. each Tuesday.



Mrs. Frehse

Jacobson's
BIRMINGHAM

Important Christmas Suggestion:
we know she wants

ORLON-WOOL PLEATED SKIRTS

- Permanently Pleated
- Completely Washable

14.95 12.95 10.95

10.95 to 14.95

She'll treasure their luxurious softness, dote on their practicality... for our orlon-wool skirts can be washed, packed and worn without losing their clean-cut pleats. Choose from our collection of solids and interesting plaids. Sizes 10 to 18; 9 to 15.

SPORTSWEAR — STREET LEVEL

Let Jacobson's be your Christmas Angel

foot-ease for her at-home leisure hours

A. All-nylon non-skid foam sole fireproof socks. Red; sizes small, medium or large. 2.59. B. Quilted chintz print slippers. Small, medium, large. \$2. C. Quilted pinwale corduroy slippers with non-skid foam cushion soles. Red, green or blue. Small, medium or large. \$2. D. Quilted satin slings, with non-skid foam cushion soles. Black, light blue or red. Small, medium or large. \$2. E. Hand-crocheted elasticized slippers. Gold or silver. Sizes medium or large. 3.96.

HOSIERY BAR — STREET LEVEL

Jacobson's
BIRMINGHAM