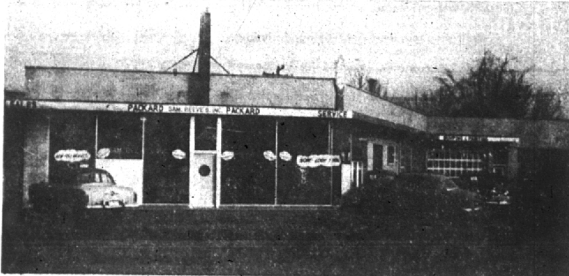


BIRMINGHAM BUSINESS BRIEFS



NEWEST STORE TO LOCATE in the city's business district is Dunn's Camera Shop, 130 West Maple. The store, which carries a complete line of photography and hobby supplies, will be managed by Edward Perry. The firm operates a store in Royal Oak.



AN OPEN HOUSE WAS CELEBRATED Friday, Nov. 28, by Samuel J. Reeve, local service station operator who recently acquired the Packard Motor Car dealership at 1265 Woodward. Reeve, who owns three local gas stations, selected the day to announce both his ownership of the firm and the 1953 line of Packard cars.

BRAND NEW FEATURES

Make this today's most modern iron—lighter, easier to use, safe and sure for even the most delicate of new fabrics



Hoover Steam or Dry Iron

Newest household help from your oldest friend at making housework easier... a steam or dry iron that's as light, as easy to use as a regular iron. Perfect for pressing suits and skirts. Ideal for steam finishing the new fashion fabrics. Big safety-dial takes the guesswork out of ironing—one setting for steam finishing and more precision heat settings than any other iron for dry ironing... a big help in doing your regular ironing. Come in and see it—or let us send one out on approval.

only \$18.95

Pay for it self with money you save on pressing bills **MILKS APPLIANCES**

Open Evenings For Your Convenience

1435 S. Woodward BIRMINGHAM MI 4-1814

Yes, I am interested in the HOVER IRON.

Deliver To: Name _____

Phone _____

Street _____ City _____

Cash C.O.D. Chg.

Wins Third Place Promotion Award

Tom Alban, owner of Alban's Party Foods, 362 E. Maple, has received a third-place national recognition award in the field of merchandising for excellence in retail wine promotion during National Wine Week. Alban won his award in competition with wine retailers throughout the United States. His and other national entries were judged on the basis of excellence in newspaper, radio and television advertising, store display, personal salesmanship and special promotional events.

Product Display Earns a Watch

Birmingham had a winner in the Pillsbury grand national bake-off although it wasn't for any baking. Herman Ziolkowski, manager of Wrigley's Super Market, 635 S. Woodward, won a prize in the grocers' contest run in conjunction with the housewives' affair. He won a watch for knowing how to merchandise his products. He and tens of thousands of other grocers matched their skill with experts who know what is the best way to display products so they will sell. Ziolkowski was one of 204 grocers throughout the United States to earn recognition for cleverness, ingenuity, and sense of salesmanship. His award was presented to him by W. E. Johnson, salesman for this area.



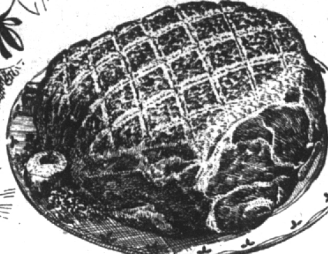
NEWLY APPOINTED personal director for the Detroit office of Ross Roy, Inc., is William P. Murphy, 2663 Buckingham. A graduate of Michigan State where he majored in economics and personnel administration, Murphy joined the Ross Roy staff after six years with Detroit Edison. He was engaged in professional placement and personnel planning activities with the electric company.

Do Your Marketing Now and Save in Pre-Christmas Event!



"SUPER-RIGHT" SMOKED or COOKED HAMS

Butt Portion Lb. 65c
Whole Hams Lb. 65c
Shank Portion Lb. 55c



Pork Loins "Super-Right" 7-Rib Portion Lb. 35c
Whole, Half or Loin Portion Lb. 47c
Chuck Roast "Super-Right" Blade Cut Lb. 69c
Prime or English Cuts Lb. 75c
Spare Ribs Small Size, Lean Lb. 39c
Smoked Pinics "Super-Right" Quality Lb. 39c
Sliced Bacon "Super-Right" Fancy Lb. 49c

ORDER YOUR CHRISTMAS TURKEY AT A&P NOW!

Pumpkin A&P 29-Oz. Can 10c

Pickles Madison Dills Kosher Style Qt. 23c

Tomato Juice Libby's 13 1/2-Oz. Can 10c
Golden Corn Sultana Whole Kernel 2 16-Oz. Cans 25c
Cut Wax Beans Reliable 13 1/2-Oz. Can 17c
Green Giant Peas 17-Oz. Can 19c
Whole Beets Miracle Brand 16-Oz. Can 10c
Date & Fig Puddings Cross & Blackwell 13-Oz. Can 49c
Salmon Perfect Strike, Chum 16-Oz. Can 39c
Grated Tuna Fish Van Camp's 6-Oz. Can 21c
Dale and Nut Bread 8-Oz. Can 21c
Hershey's Cocoa 4 in 1 8-Oz. Can 25c
Cocoanut Rajah 4-Oz. Pkg. 15c
Corned Beef Hash Broadcast 16-Oz. Can 29c

Stuffed Olives Sultana, Large and Small 10-Ounce Refrig. Jar. 49c
Maraschino Cherries Liberty 10-Oz. Jar. 35c
Fruit Cocktail Sultana 29-Oz. Can 37c
Granberry Sauce Ocean Spray Whole or Strained 17-Oz. Can 19c
Sparkle Gelatin 3 Pkgs. 20c
dexo Shortening 3 Lb. Cans 75c
Tea Bags Our Own Pkg. of 100 69c
Cake Mixes Pillsbury 3 Pkgs. 1.00
Krispy Crackers Sunshine Lb. Pkg. 25c
Townhouse Crackers Hakman Lb. Box 35c
Dromedary Dates 7 1/2-Oz. Pkg. 23c
20-Mule Team Borax 16-Oz. Pkg. 21c

JANE PARKER Fruit Cake
5-Lb. Size 3.95
3-Lb. Size 2.49
1 1/2-Lb. Size 1.29

Pumpkin Pie Jane Parker 8-Inch Size 43c
White Bread Jane Parker 20-Oz. Loaf 17c
Sugar Cookies Jane Parker Pkg. 25c
Danish Ring Plain Coffee Cake Each 25c

CALIFORNIA NAVEL
Oranges Doz. 49c
150-176 SIZE

Fresh Cranberries Late Harvest 14-Oz. Cello Bag 29c
Pascal Galery California, 24 Size Stalk 29c
Rome Apples 2 Lbs. 39c
Fresh Dates California 1-Lb. Pkg. 29c
Red Diamond Walnuts 16-Oz. Cello Bag 49c
Almonds Blue Diamond 16-Oz. Cello Bag 49c
Pecans Gold Kist Brand 16-Oz. Cello Bag 49c
Brazil Nuts Holly Brand 16-Oz. Cello Bag 49c
Filberts Blue Pirate 16-Oz. Cello Bag 39c
Mixed Nuts Sun Glo 16-Oz. Cello Bag 49c

Cheese Gift Box 2.79

Large Eggs Sunnybrook Grade "A" Doz. in Carton 61c
Wisconsin Sharp Cheddar Cheese Lb. 69c
Wildmere Butter Lb. Print 71c
Kaukauna Cheese Links 4-Oz. Link 37c

Swift'ning 3-Lb. Can 81c
Wesson Oil Pt. Bot. 36c Qt. 69c

Tender Green Plum
Butter Kernel Corn
2 12-Oz. Cans 35c

Just Heat and Eat!
Hormel's Spam
12-Oz. Can 45c

Southern Twice-Thrift Priced
Northern Tissue
3 Rolls 23c

For Cooking or as a Spread
Parkay Margarine
1-Lb. Can 31c

Handy for the Kitchen—Northern
Paper Towels
2 Rolls 39c

Hormel's—With Beans
Chili Con Carne
16-Oz. Can 35c

Spry 3-Lb. Can 85c Lb. Can 31c
Spic & Span Giant Pkg. 77c Reg. Pkg. 25c
Kirk's Castile Soap 3 Cakes 23c
Chiffon Flakes 2 Twin Pkgs. 39c
Dial Soap Regular Size 2 Cakes 27c

A&P Super Markets
THE GREAT ATLANTIC AND PACIFIC TEA COMPANY

All prices in this ad effective through Saturday, December 20th.