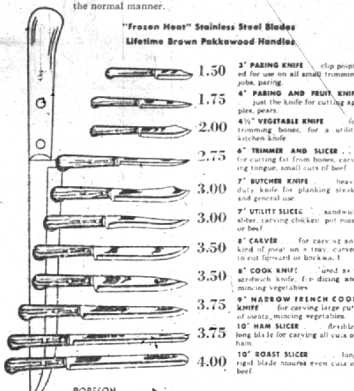


ROBESON "FROZEN HEAT" CUTLERY

...Guaranteed sharp for three years!

Now you can cut, slice, pare, carve with the sharpest, keenest, longer-lasting blades ever made. Today you can buy a knife so sharp for a full three years. The secret is "Frozen Heat" . . . an exclusive Robeson process. The blades are hollow ground so, when they dull, you can sharpen them in the normal manner.



"Frozen Heat" Stainless Steel Blades
Lifetime Brown Pakkwood Handles

- 1.50 3" PARING KNIFE . . . slip point for use on all small trimming jobs
- 1.75 4" PARING AND FRUIT KNIFE . . . just the knife for cutting apples, pears
- 2.00 4 1/2" VEGETABLE KNIFE . . . for removing skins, for a variety kitchen knife
- 2.75 6" TRIMMER AND SLICER . . . for slicing fat from bones, saving for long small cuts of beef
- 3.00 7" BURGERS KNIFE . . . necessary daily knife for planking steaks and ground beef
- 3.00 9" GRIDDLE SLICER . . . sandwich slicer, carving chicken, pot roast or beef
- 3.50 8" CALVER . . . for carving any kind of meat on a tray, curved curved forward or backward
- 3.50 8" COOK KNIFE . . . used for slicing and mincing vegetables
- 3.75 9" NARROW FRENCH COOK KNIFE . . . for slicing, mincing vegetables
- 3.75 10" WIDE SLICER . . . available long blade for carving all cuts of meat
- 4.00 12" BROAD SLICER . . . long, rigid blade houses even cuts of beef

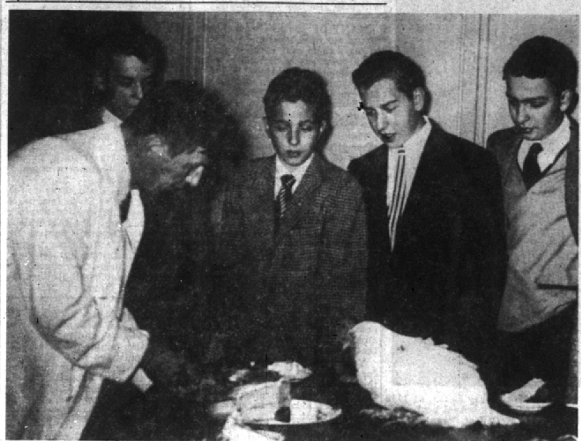
ROBESON *Shur-edge* FROZEN HEAT

HOLLOW GRABBER HOUSEHOLD CUTLERY

"Frozen Heat" Stainless Steel Blades—Open Stock

- 3-in. Paring Knife . . . 1.25
- 4-in. Paring and Fruit Knife . . . 1.35
- 4 1/2-in. Vegetable Knife . . . 1.50
- 6-in. Trimmer and Slicer . . . 2.50
- 7-in. Slicer . . . 2.50
- 8-in. Household Butcher . . . 2.50
- 8-in. Carver . . . 2.75
- 6-in. Cook Knife . . . 2.75
- 9-in. Narrow French Cook Knife . . . 2.75
- 10-in. Wide Slicer . . . 2.75
- 8-in. Serrated Bread Knife . . . 2.50
- Pat Fork . . . 1.50
- 12-in. Broad Slicer . . . 2.85

HUSTON HARDWARE CO.
OUR FORTY-THIRD YEAR
Birmingham's Oldest Hardware Store
205 N. Woodward Midwest 4-7330
OPEN EVENINGS TO 9 TILL CHRISTMAS



IT ISN'T EVERY CHICKEN THAT HAS A birthday party . . . but then, it isn't every chicken that lives to be 12 years old. So to celebrate her long years of egg production, members of the Cranbrook school science class shared a birthday cake, complete with candles with Prof. Holland R. Sperry welding the cake knife. Esmeralda has helped many a science class at the school learn scientific methods and has kept up with her egg-laying duties. Her age corresponds to a human-life span of 100 years.

'Upon a Star'

By JOHN MCKINNEY

Christmas, only Christmas could bring such happiness. Glistening snow mantling so green trees, cheerful red berries and white farm homes, bright service stations, a tall church steeple. All these sights the little boy detoured on his train ride.

For, you see, it was Christmas the day after tomorrow and he had never been on a train before.

Sure . . . so it was only a freight and he'd rather ride in the caboose of a freight train than in that fancy silver passenger train that just went by. More fun for you see . . . it had to stop time after time and he could watch what

went on.

"Yeah" . . . why, they'd just stopped to load some cans of milk. Maybe some day he could be an engineer, and take a train just like this and stop, look out the windows, and watch while a man worked hard loading cans of milk.

"Boy" . . . that'd be fun. Maybe he'd kid the man.

AND HERE they were coming to another stop. Coal—a great car load of it. The little boy stretched his neck to watch the black chunks go tumbling down the chute.

"Boy" . . . look at that car tilted on its side. You'd think it would fall right on over!"

"Gee" they were going to unload some logs, too. And as he watched, a crane swung around and started picking up logs in big gulps.

Clickety clack—a freight train went by. But . . . it was an Army train. It had brown tanks on it. Trucks . . . too!

By golly . . . maybe some day he'd be in the Army and then he could shoot guns just like those.

"Gosh" . . . there went his train whistle. A jerk forward and off they went. There was main street. Lots of cars on it. He sure would like to have a car. Maybe he'd get one for Christmas.

OUT IN THE country. There was a field with cows in it.

"How come the farmer lets his cows out with snow all over?"

Ahead were hills. Beyond . . . they were in a tunnel. Real dark, too. Out in the bright light again.

"There" . . . they just passed a switch and the light was green.

"Oh heck" . . . they were slowing again. "But for water!" Down went the spout from a big wooden tank on stils. He'd have to tell his Dad. Yeah, he'd tell him all about it.

Whoosh . . . went the whistle and the train started forward. But not for far, maybe two miles. Now . . . just half a mile. They had to get on another track. Then the train stopped.

WHIRRRR . . . clickety, clickety, clickety . . . past them went that passenger train again. Maybe he should ride the passenger train.

"Let's go, son!"

The little boy reluctantly let go of the table edge.

He looked long at the freight train, passenger train, farms and bright snow, and the man leading milk cans on the freight train.

"Maybe Santa will get you a train for Christmas."

"Gee" . . . can I have one of those five trucks and ladders?"

His gaze had fallen on another coupler and Christmas was day after tomorrow.

City Patrolmen Complete Training

Four members of the Birmingham police department—Howard Hatt, Arthur Blakfield, Anthony Stile and Charles Blashfield—are being graduated from the Southeastern Police Chiefs' association training program today, Dec. 18.

They, with 97 other policemen representing 19 departments from the Metropolitan Detroit area, will be guests at a luncheon this noon at the Grosse Pointe yacht club.

Birmingham Police Chief Ralph W. Moxley will attend, as will Sgt. Merlin Holmquist, who was one of the program instructors. The Rev. Robert S. Graham, assistant at the First Presbyterian church of Birmingham, will give the invocation.

The program was inaugurated in October, 1951, and over a full year included 90 hours of special training in all phases of law enforcement and official contact between police officers and the public.

quick

friendly

capable

If you like your radio and television service that way, you'll like our service. Give us a ring. We'll do our best to get the same nice reputation with you that we enjoy with hundreds of other customers. Don't wait until your set fails. An occasional check-up costs less than a repair job.

ELECTRONIC SERVICE CO.
CAR RADIO SPECIALISTS
Radio and Television Engineering
Sales & Service

Midwest 4-8785 538 So. Woodward Ave.
Open Evenings Till 9 Birmingham, Michigan

6 ROOM RANCH HOME



- Large Living and Dining Area
- 3 Bedrooms
- Large Kitchen
- Natural Finish Birch Cabinets
- Fireplaces
- 1 1/2 Baths
- Perimeter Heat

NEWPORT HOMES CO.
148 Pierce St. MI 4-8020



FOR SALE—"APPLE LANE FARM"

This beautifully landscaped estate, built of granite blocks, is located in a low tax area, and is an excellent buy for a private residence, church, private school, or club.

Located on a high elevation with views of surrounding countryside, the main building has:

First Floor: 9 rooms, 2 fireplaces, 2 powder rooms, and 2 extra porches. Living room and library are extra large.

Second Floor: 11 bedrooms, 4 baths, 2 showers, fireplace and 2 sleeping porches.

Also included are 2 smaller houses and garages with living quarters. Located at northeast corner Franklin and Lone Pine Road. —G. D. Pope Estate.

Will sell ten or more acres, with buildings.

Call Francis H. Phelps

HOUSEMAN SPITZLEY CORPORATION
WO 3-4816 or Midwest 4-5101

WE RESPECT THE FAMILY BUDGET

PORK LOIN ROAST Fresh, Rib-End 29c lb.

Pre-Cooked, Shank-End SMOKED HAM 49c lb.

Choice BEEF POT ROAST 69c lb.

KEYKO OLEO 26c lb.

Hills Bros. COFFEE 84c lb.

Campbell's TOMATO SOUP 10c

Ocean Spray CRANBERRY Whole or Jellied 1 lb. can 19c

Del Monte SUGAR PEAS 303 can 18c

Franco American Macaroni 15 1/4 oz. can 2 for 31c

Bulldog SARDINES Mustard or Oil 10c

BIRDSEYE 12 oz. pkg. PEAS 2 for 41c

6 oz. can ORANGE JUICE 2 for 31c

Fresh LAMB PATTIES 49c lb.

Choice LAMB BREAST 29c lb.

No. 1, 10 lb. bag IDAHO POTATOES 69c

Tender CELERY HEARTS bunch 19c

Large PEPPER SQUASH 2 for 19c

JUICY, JONATHAN 3 Pounds 29c

Dale FRUIT COCKTAIL 2 1/2 can 38c

Chicken of the sea BITE SIZE TUNA 29c

Sunland, mammoth RIPE OLIVES 9 oz. can 36c

PET—CARNATION MILK Tall Can 14c

custom-made all-Aluminum venetian blinds

wipe clean plastic tapes, cords and tassels . . . spring tempered aluminum slats (footproof mechanism) . . . Easier to decorate with new extended top bar (shown). Holds draperies, too.

PEABODY'S SUPER MARKET

154 HUNTER at MAPLE MI 4-5222

Open every evening except Saturday
Sunday hours: 10 a.m. to 8 p.m.

WE DELIVER
Free Parking, Front & Rear of Store

COUNTER TOPS WALLPAPER LINOLEUM PAINT TILE

T. E. HOGAN Co.
2865 Woodward Ave.
3 Blocks South of 12 Mile LI 4-3800
OPEN FRIDAY TILL 9 P.M.