

MacManus, John & Adams Occupies New Building

A plan which took form shortly after the close of World War II became an actuality this week when the advertising agency offices of MacManus, John & Adams, Inc., were moved into a new, modern and specially designed building at the northwest corner of Woodward and Long Lake roads in Bloomfield Hills.

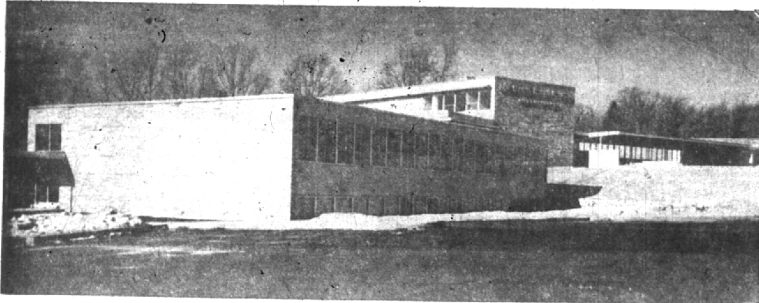
The new building provides considerably more floor area for the agency's expanding business operations, is closer to the geographical center of its clients than its former offices in the Fisher Building in Detroit.

Special features of its building include lobby floors and stairs of Vermont slate, two small limestone blocks from the old White House in Washington inserted near the lobby stairs, interior trim of white birch, acoustic plaster on all ceilings, overhead fluorescent lighting, and specially designed furniture and fabrics and carpets.



W. A. P. JOHN
Board Chairman

J. R. ADAMS
President



ANOTHER VIEW of MacManus, John & Adams' new office building in Bloomfield Hills, to which the advertising agency has just moved. It is believed to be the first building ever designed for advertising agency operations and erected in a suburban area.



THE MAIN LOBBY and sub lobby of the new MacManus, John & Adams building feature modern furniture, fixtures and lighting. The door at the right rear of the picture leads to the car ports and garages.



THE COST AND BILLING departments share a light and airy room in the new home of MacManus, John & Adams. The furniture is functional modern.

A&P's Great Pre-Holiday Food Event!

Come See at A&P

"Super-Right" U. S. Choice Round or Sirloin Steaks

Now, more than ever, it's important that the steak you spend your money for is steak that's tender, juicy and delicious. And smart shoppers know that that's just what they get at A&P!

Lb. **89¢**



Order Your A&P Ready-to-Roast Christmas Turkey Now!

Boston Butt Pork Roasts Lb. 39¢
Chuck Roasts "Super-Right" U. S. Choice Lb. 69¢

Arm or English Cuts..... Lb. 75¢

- | | | | |
|--|-----|---|-----|
| Tomato Juice Libby's 13 1/2-oz. Can | 10¢ | Roasted Sausage Mickelberry's Small Links Lb. | 69¢ |
| A&P Pumpkin 29-oz. Can | 10¢ | Pork Steaks Cut from Boston Butts Lb. | 45¢ |
| Golden Corn Sultana Whole Kernel 2 16-oz. Cans | 25¢ | Beef Rib Roast "Super-Right" Light U. S. Choice End Lb. | 89¢ |
| Tomato Soup Ann Page 3 10 1/2-oz. Cans | 29¢ | Frankfurters Skinless Lb. | 53¢ |
| Tomato Ketchup Ann Page 2 14-oz. Botts. | 39¢ | Bacon Squares Small Size Cello Wrapped Lb. | 25¢ |
| Red Beans Sultana 16-oz. Can | 10¢ | Smoked Picnics "Super-Right" Lb. | 39¢ |
| Cut Wax Beans Iowa 2 15 1/2-oz. Cans | 27¢ | *Roll Sausage Hygrade or Greenfield Lb. | 29¢ |
| Del Monte Peas 17-oz. Can | 19¢ | All-Beef Salami Makes a Tasty Lunch Pkg. | 59¢ |
| Golden Corn Green Giant Broadcast 2 16-oz. Cans | 35¢ | Sliced Bacon "Super-Right" Fancy Pkg. | 49¢ |
| Biscuit Mix Jiffy 40-oz. Pkg. | 35¢ | Florida Oranges 8-Pound Mesh Bag | 49¢ |
| Boned Chicken Bonquet 3 1/2-oz. Can | 39¢ | Grapefruit Florida Seedless 5-Pound Mesh Bag | 39¢ |
| Corned Beef Hash Broadcast 16-oz. Can | 35¢ | Cucumbers Fancy 2 For | 19¢ |
| Stuffed Olives Sultana 10 1/2-oz. Jar | 49¢ | Brussels Sprouts Or | 29¢ |
| Whole Beets Miracle Brand 16-oz. Can | 10¢ | Bananas Golden Rippe 2 Lb. | 29¢ |
| Salmon Perfect Strike, Chum 16-oz. Can | 39¢ | Red Radishes Garden Crisp Bunch | 5¢ |
| Star-Kist Tuna Chunks 4 1/2-oz. Can | 33¢ | Filberts Blue Pirate Lb. | 39¢ |
| Pineapple Juice A&P 16-oz. Can | 29¢ | Mixed Nuts Sun Glo Lb. | 49¢ |
| Fels Naptha 10 Bars | 67¢ | | |
| Plums Rose Brand - In Syrup 2 16-oz. Cans | 29¢ | | |
| Bartlett Pears Michigan Brand Honey - Sweet 29-oz. Can | 27¢ | | |
| Cake Mix Pillsbury's Angel Food 14-oz. Pkg. | 57¢ | | |

JANE PARKER
FRUIT CAKE
1 1/2-Lb. Cake **1.29** 3-Lb. **2.49** 5-Lb. **3.95**

- | | |
|---|-----|
| Peach Pie Delicious, Tender Flaky Crusts Each | 49¢ |
| White Bread Jane Parker Save Up to 3¢ 20-oz. Loaf | 17¢ |
| Pineapple Coconut Buns Pkg. of 10 | 25¢ |
| Dinner Rolls Just Meat and Serve Pkg. of 12 | 15¢ |
| Potato Chips Jane Parker 1-Lb. Box | 69¢ |

- | | |
|---|------|
| Mazola Oil For Cooking or Salads Gal. Tin | 2.29 |
| Peanut Butter Velvet 2-Lb. Jar | 77¢ |
| Ivory Soap Personal Size 4 Cakes | 23¢ |
| Lava Soap Med. Size 2 for 19¢ 2 Large Cakes | 27¢ |
| Spic & Span Giant Pkg. | 77¢ |
| P&G Laundry Soap 4 Cakes | 29¢ |
| Cheer Giant Bot. | 69¢ |
| Lifebuoy Soap Bath Cakes 2 For | 23¢ |
| Lifebuoy Soap Reg. Cakes 3 For | 23¢ |

Wisconsin Sharp
Cheddar Cheese
Lb. **69¢**

- | | |
|--|-----|
| Large Eggs Sunnybrook Grade "A" Doz. In Ctn. | 59¢ |
| Medium Eggs Sunnybrook Grade "A" Doz. In Ctn. | 55¢ |
| Sunnyfield Butter 93 Score 1-Lb. Ctn. Qtrs. | 75¢ |
| Wildmer Butter 1-Lb. Print | 72¢ |
| Ched-O-Bit Processed American Cheese Food 1-Lb. Pkg. | 49¢ |

- | | |
|--|-----|
| Lipton Soup Mix Celery, Noodle or Tom. Veg. 3 2-oz. Pkg. | 37¢ |
| Marachino Cherries 10-oz. Jar | 35¢ |

- | | |
|---|-----|
| Sweetheart Christmas Soap Gift Box with Wrapping Paper 6 Bath Cakes | 69¢ |
| Swan Soap Regular Size 3 Cakes | 25¢ |
| Swan Soap Bath Size 2 Cakes | 25¢ |
| Lux Soap Regular Size 3 Cakes | 23¢ |
| Lux Soap Bath Size 2 Cakes | 23¢ |
| Rinso Giant Pkg. | 53¢ |
| Spry Giant Can | 85¢ |

Handy for the Kitchen
Northern Paper Towels
2 Rolls **39¢**

For Cooking or Tasty Spread
Parkay Margarine
Found Ctn. **31¢**

A&P Food Stores
THE GREAT BULK LINE AND PRICES FOR ECONOMY