



STOP! STOP!
QUICKLY SAFELY

Avoid Skidding

Stopping in traffic, on icy hills, staying on icy curves will cease to be the terrifying experience with

CONNECTICUT
D-SKIDDER

The positive control and Instant Traction Road Sander for Automobiles

- Instant control with foot button
- Operates mechanically—no electrical connections
- Exclusive mechanism eliminates maintenance or breakdowns
- One model fits all cars
- Simple, fast installation

\$27⁹⁵ Installed

The North Chevrolet Company

Service Dept. Open 7 a.m. to 9 p.m. Monday Thru Friday
7:00 a.m. to 5:00 p.m. Saturday

1000 S. Woodward
Midwest 4-2735

Remember: Our Chassis Lubrications give 100% protection at no extra cost!

Board Discusses Park Development

With but three of its seven members present, Birmingham's recreation board devoted its Dec. 4 meeting to discussions of several projects, including the development of Poppleton and Eton parks and winter recreation programs.

Mrs. William H. Jackson, board chairman, Mayor Dean Beier and Earl Sandquist, assistant to the city manager, heard further reports on the Eton park plan presented by Robert Boatman, planning director.

Boatman currently estimates it will require about \$57,000 to completely develop Eton park. It was pointed out, however, that the completion of the park is on a long range development basis, and estimates may change sharply over the years.

IMMEDIATE plans call for the completion of baseball diamonds ready for the coming season. A great deal of this work has already been done, including a portion of the landscaping of the park.

At Poppleton park, a softball diamond will be ready for the 1953 season, probably to be assigned to the Birmingham YMCA.

Board members said they felt this particular sport and group would present less of a parking problem for the area than any other which might be placed there.

Ultimate plans for the park call for non-spectator sports and play area for smaller children.

It was reported that several skating rinks will be available in city parks this year, with basic

November Has Low Accident Record

November turned out to be the "safest" driving month in Birmingham, when police recorded only 16 street mishaps. These included three personal-injury accidents, in which eight persons were hurt. Estimated property damage for the month was \$2,598.

The report showed 18 violations were indicated in the crashes, with 8 right-of-way violations leading the field. Others were improper passing, 3; speeding, 2; disregard stop sign or signal, 2; failure to signal or improper signal, 1; following too closely, 1; and improper starting from a parked position, 1.

Although there were four more persons injured during November, the total report shows a drop of 10 accidents from the previous month.

The same period, in 1951, when inclement weather prevailed throughout the month, had a total of 31 accidents in which 10 persons suffered injuries.

Give HER a Merry Christmas with a **HANDY HANNAH HAIR DRYER**

A whiff for Six or More. Blow hot or cold. Sets on heavy stand or can be held in hand. **\$6.95**

Use our convenient lay-away plan

HAWTHORNE ELECTRICAL CO.

Open Evenings, Dec. 12 to Christmas
182 N. Woodward - MI 4-2209

Building Permits Issued LAST WEEK

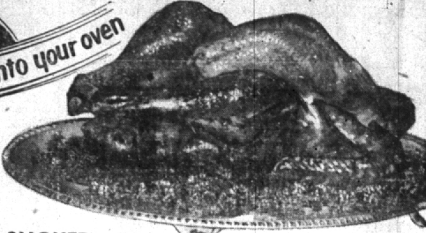
| | | |
|-----------------|---|-----------|
| TOTAL VALUATION | 4 | \$163,650 |
| Residences | 2 | \$32,500 |
| Alterations | 1 | 1,150 |
| Business | 1 | 130,000 |

| Mo | Permits | 1951 Totals | 1952 Permits | 1952 Totals |
|-------|---------|-------------|--------------|-------------|
| Jan. | 83 | 1,478,455 | 82 | 1,228,200 |
| Feb. | 83 | 839,280 | 82 | 816,800 |
| Mar. | 83 | 1,028,000 | 82 | 1,028,000 |
| Apr. | 92 | 748,758 | 82 | 448,018 |
| May | 83 | 1,028,000 | 82 | 1,028,000 |
| June | 72 | 748,758 | 82 | 1,028,000 |
| July | 83 | 1,028,000 | 82 | 1,028,000 |
| Aug. | 80 | 843,230 | 82 | 1,028,000 |
| Sept. | 83 | 1,028,000 | 82 | 1,028,000 |
| Oct. | 88 | 1,028,000 | 82 | 1,028,000 |
| Nov. | 22 | 119,950 | 82 | 1,028,000 |

COOKED — Just Heat and Serve . . . For The Holidays . . .

TURKEYS

All ready to pop into your oven



ORDER YOURS EARLY!

WE HAVE A COMPLETE LINE OF **FROZEN POULTRY**

- TURKEYS
- CHICKENS
- CAPONS
- DUCKS
- GEESE
- PHEASANETS

SMOKED BEEF TONGUES . . . 59c lb.

PORK LOIN ROAST RIB END **35c lb.** LOIN END **49c lb.**

DAVIES SLICED BACON . . . 1/2 LB. PKG. 35c

McMILLAN'S COUNTRY ROLL BUTTER 75c lb.

Kaukauna Klub CHEESE 6 oz. pkg. 39c
Hickory Smoked, Appetizer, Plain, Onion, Wine, Garlic

• DAVIES CANNED 9 lb. 12 oz. Average
• ARMOUR'S
• DUBUQUE
• RATH'S **HAMS 89c lb.**

Sfire's Own CHICKEN PIES
Try Them Today! **SPECIAL 49c ea.**

Dubuque CANNED HAMS 7 1/4 LBS. EACH \$6.99

Chunk Bacon MILD & DELICIOUS 39c lb.

U. S. Choice & Prime Grades for Your Freezer
Whole Lamb 65c lb.

Chase & Sanborn COFFEE 83c lb.

DINING CAR BRANDIED MINCE MEAT Jar 47c

BUMBLE BEE CHUNK and FLAKE—WHITE MEAT TUNA FISH 3 cans \$1.00

Gain's 25 lb. Bag DOG MEAL . . . \$3.15

DERBY'S PETER PAN DIXIE JUMBO SALTED PEANUTS 4 Jars \$1.00

FLORIDA JUICE ORANGES 3 Dozen \$1.00

DERBY'S PETER PAN Smooth Peanut Butter 12 OZ. JARS 2 FOR 75c

IDAHO POTATOES 10 lb. Bag 75c

AWREY BAKERY
Butterscotch Nut Cookies . . . per dozen 48c
Whipped Cream Lemon Chiffon Pies . . . each 80c
Danish Horn Orange Sweet Rolls . . . 6 for 50c
Old Fashioned Banana Nut Bread . . . each 65c
Creamy Pineapple Filled Fudge Cup Cakes . . . 6 for 40c
Raspberry Streusel Danish Coffee Cakes . . . each 60c
Pecan Whole Wheat Donuts . . . 6 for 50c
SPECIALTY BREAD—A DIFFERENT VARIETY EVERY DAY
Tasty Glazed Donut Dunkers . . . per dozen 58c (FRIDAY & SATURDAY ONLY)
Apricot Glaze Small Layer Cakes . . . each 65c (FRIDAY & SATURDAY ONLY)
Delicious Chocolate Frosted Marble Layer Cakes . . . each \$1.05

A Large Selection of CHEESE GIFT BOXES

AWREY BAKERY
Butterscotch Nut Cookies . . . per dozen 48c
Whipped Cream Lemon Chiffon Pies . . . each 80c
Danish Horn Orange Sweet Rolls . . . 6 for 50c
Old Fashioned Banana Nut Bread . . . each 65c
Creamy Pineapple Filled Fudge Cup Cakes . . . 6 for 40c
Raspberry Streusel Danish Coffee Cakes . . . each 60c
Pecan Whole Wheat Donuts . . . 6 for 50c
SPECIALTY BREAD—A DIFFERENT VARIETY EVERY DAY
Tasty Glazed Donut Dunkers . . . per dozen 58c (FRIDAY & SATURDAY ONLY)
Apricot Glaze Small Layer Cakes . . . each 65c (FRIDAY & SATURDAY ONLY)
Delicious Chocolate Frosted Marble Layer Cakes . . . each \$1.05

FRUIT CAKE MIX
Add Only Water For A Two-Pound Cake **BOX 95c**

Cluster Raisins 49c

Snow-Crop FROZEN FOODS
ORANGE JUICE 2 cans 37c case \$8.59
FROZEN PEAS 2 pkgs. 45c doz. \$2.65
Frozen French Fried POTATOES 2 pkgs. 49c doz. \$2.89
FROZEN WAFFLES 2 for 37c doz. \$2.19

Sugaripe Figs 45c

Desert Sweet Pitted Dates 35c

Sfire's Mocha & Mocha BEAN COFFEE 93c lb.

Sfire's

SPECIALS

INSULATION FOR Comfort
Zonolite Insulation **\$1.40** a bag

SPECIAL
Combination Storm Doors. Bronze Screen . . . white pine. Comb. Storm Windows and reg. storm windows.
2-6 by 6-8 **\$15.50**

Nu-Wood CEILING TILE
12" x 12" 16" x 16"
12" x 24" 16" x 32"
1/2" thick 10 1/2 Sq. Ft.

Gold Bond Fibreglas
Matt thick, 80 sq. ft.—per bag \$4.50
Matt thick, Foil, 1 side—per bag \$5.50
SPECIAL THIS WEEK ONLY

OUR POLICY . . .
To give you, the customer, courteous, friendly and prompt service whatever your needs may be. Just tell us what you want, we have it for you. Stop in and visit us soon, it's your yard!

Painting Days ARE HERE AGAIN
Clear & White Firzite **Satanlaq**
(The Satin of all Varnishes)

PLANKWELD (prefinished). Beautiful. See our display!

SPECIAL
Perma Cedar Shavings for Kennel bedding **75c per bag**
Aromatic Cedar Lining—tongued & grooved & End matched. 3/8x3 1/2 50 sq. ft. **\$13.65**

Clear & White Firzite Satanlaq
(The Satin of all Varnishes)

Knotty Cedar Paneling 6" - 10" - 12" - 18 1/2 sq. ft.

SPECIAL
PING PONG Table, Stand Knocked down — slotted and ready to set up. No nails needed. Packaged. **\$12.38**

Painting Days ARE HERE AGAIN

Snow Shovels
Pushers **1.85**
Aluminum **2.75**
Ice Picks **1.35**

SPECIAL
Perma Cedar Shavings for Kennel bedding **75c per bag**
Aromatic Cedar Lining—tongued & grooved & End matched. 3/8x3 1/2 50 sq. ft. **\$13.65**

TOPS, Two-Piece 4 ft., 6-in. by 5 ft.
1/2-Inch Tops **\$13.65**
3/4-Inch Tops **\$15.60**
1/2-Inch Tops **\$18.00**

RESTRICTION 2-WAY BUILDING PLAN
1. Restrick's "HOUSE DOCTOR" will help you plan to build it yourself.
2. A Restrick Selected Contractor will build to your specifications.
FREE ESTIMATES—Attic Rooms and Recreation Rooms

CUPBOARD DOOR HARDWARE

WORK BENCHES
Knocked Down (Unfinished) **\$13.95**
Boy's Size Work Bench **\$6.75**
STANLEY TOOL—Gift Sets from \$7.95

RESTRICK

425 ETON RD-BIRMINGHAM

1884 LUMBER COMPANY 1952

OPEN DAILY 8-5—CALL MIDWEST 4-5537

JORDAN 6-3920



Sfire's