

Township Approves 14 Mile Flasher

Southfield and Bloomfield township residents were one step closer to gaining a flasher signal at Fourteen Mile road and Telegraph when the Southfield township board approved the transfer of \$100 from the contingency fund to pay their share of the light.

The state highway department already has approved the installation of the signal subject to Southfield and Bloomfield participating in the cost of the light. The state is to pay \$200 with each township paying \$100.

A communication reporting the action taken by the state and by Southfield was ordered sent to the Bloomfield board for action.

OFFICES

(Continued from Page One)

turing blonde woods, pastel shades and indirect lighting. New, color-harmonizing furniture has been installed. Swanson, Associates, of Bloomfield Hills, were the architects.

Adams disclosed that before making the move, employees were surveyed as to the convenience of the new location. It was discovered that two-thirds of the staff lived north of Six-Mile Road, making the trip to Bloomfield Hills as convenient or more convenient than the former midtown location and eliminating travel in Detroit's rush-hour traffic.

PARKING FOR 120 cars is provided on the building's 4-acre site. The new location also has regular suburban bus service almost to the door.

Suppliers to the agency, including printing, lithographing and similar firms, have arranged with a Detroit delivery service for four round trips a day between Bloomfield Hills and a central warehouse. Material for the agency is delivered by the suppliers' own trucks to the warehouse for trans-shipment, and material from the agency is brought by the delivery service to the warehouse for pick-up by the suppliers.

The agency's four top executives are residents of this area. President James R. Adams lives at 983 Kenpesav, and Board Chairman W. A. P. John at 556 Footing lane, Birmingham. Executive vice-president Harvey G. Luce resides on N. Woodward, and John R. MacManus on Guilford road, Bloomfield Hills.



J. B. TAYLOR

Chairman Named For Polio Drive

John B. Taylor, 988 Madison, has been named chairman of the Birmingham March of Dimes campaign. Mrs. Edward W. Rieman, 3174 Glencoe, will serve as assistant chairman.

The Birmingham drive will center on a "Mother's March," a one-night porchlight campaign. Last year's volunteers who are willing to offer their time again are asked to contact Mrs. Rieman.

Date of the one-night drive, scheduled for late January, is as yet undecided.

DISPOSAL

(Continued from Page One)

amount were expended, all operations of the plant might be halted within the next 10 years.

CITY OFFICIALS look for a Rouge Valley interceptor main to be constructed to Birmingham from the Detroit system sometime probably close down the plant permanently, officials claim.

Ayers added that his figures were minimum costs. In attempting to discover just what the state standards call for in approved sewage treatment, the city fed answers ranging from 324 gallons per capita per day to 1,000 gallons per capita per day.

The city used the lowest figure to base costs upon.

Commissioners have questioned Detroit's ability and willingness to accept the treatment of a portion of Birmingham's sewage and also meet the demands of the Water Resources Commission.

EGBERT REPORTED that in

conversation with the Detroit Water Board, he was assured that Detroit facilities were adequate to care for Birmingham indefinitely.

If changes are made in Detroit treatment, the costs will be proportionately shared by all communities using the facilities, he stated.

One member of the audience questioned whether the city would have to make additions to the plant if the city joined the SOCSDD and yet handled the population increase in the surrounding areas.

Egbert commented that if the city's plan were to treat sewage from the southeastern portion of Bloomfield township, some addition would be necessary in about five years.

AYRES SAID that facilities would have to be improved at the disposal plant no matter what course of action the city chose. Chlorination equipment as well as a sludge remover and additional primary settling tanks would cost the city nearly \$200,000, he said.

City commissioners learned a week ago that initial costs to join the SOCS authority would be near \$20,000 for active participation beginning in May, 1953. Operational costs of disposing of the east side wastes would be about \$15,000 a year for the next 6 to 7 years.

Commissioners agreed that this looks like the far more economical method of meeting state requirements.

Egbert maintained that although the Red Run river was carrying too large quantities of polluted materials, the solution was near at hand.

ONE RESIDENT disclaimed the city's stand on the SOCSDD answer to the disposal problem. He stated that the city of Pontiac was constructing a large plant for bit more than the suggested costs for Birmingham's additional plant facilities.

"If Detroit is charging 4 1/2 cents per thousand gallons for treatment, I think it would be a bargain to build the plant additions and treat our own sewage," he said.

Ayres pointed out that Birmingham's cost per one million gallons of added capacity would be

The Birmingham Eccentric Published every Thursday, at Birmingham, Mich., in the Eccentric Building, 210-212 North Woodward Ave. Telephone, ML 6-6116. G. GREGG B. AYRELL, Editor and Publisher

Entered as Second Class Matter in the U. S. Post Office at Birmingham, Michigan, under the Act of March 3, 1879.

SUBSCRIPTION RATES

One Year (12 Issues)	\$3.00
Six Months (6 Issues)	1.50
Three Months (3 Issues)	.75
One Year (12 Issues)	\$4.00
Six Months (6 Issues)	2.00
Three Months (3 Issues)	1.00

some few thousands of dollars have an access to the SOCS drains at the southeast border of the city and agreed with commissioners that joining the authority seemed the most feasible way out of the predicament.

News copy submitted early necessarily is given preference over late items. So the "Early Bird" usually gets the space.

Be Wise—Use Classified

The Best FAMILY GIFT!

Cook twice as easy—With 2 BIG OVENS!

FRIGIDAIRE Electric Range



Here's the finest range money can buy! Has 2 big ovens plus a full-width broiler drawer. Long life and beauty in its porcelain finish inside and out... and many work and time saving features you'll find in no other electric range... anywhere.

Ask About Our STAR Purchase Plan! CASH PRICE \$408.75

Other Frigidaire Electric Ranges as low as \$135.00

For December 24th Delivery

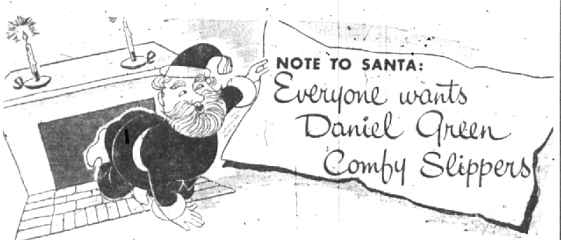
CRAIG APPLIANCES, Inc.

112 S. WOODWARD MI 4-2525

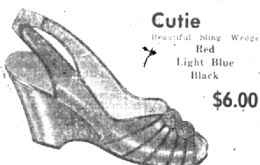
GIVE AN EASEL For Christmas

GREEN'S

210 S. Woodward MI 4-0934



NOTE TO SANTA: Everyone wants Daniel Green Comfy Slippers



Cutie Beautiful Sling Wedge Red Light Blue Black \$6.00



Doric Color in Satin, Flame Red, Heaven Blue, Royal Blue, White, Black, Wine, Pink. \$6.00



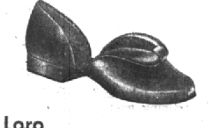
Bonny Low Wedge Sling Flame Red Royal Blue Black \$6.00



Pow-Wow Wool Felt Green Red Royal Blue Tan \$6.00



Quiltie Satin Red Royal Blue Black \$5.00



Loro New Low Heel Satin Flame Red Royal Blue Heaven Blue White, Wine, Black \$6.00

Daniel Green Comfy Slippers

Herbert Burr

Shoe Salon 255 No. Woodward, Birmingham

POWER TOOLS FOR CHRISTMAS MALL & STANLEY DELTA HOMEKRAFT

SUBURBAN SALES & SERVICE 6165 Telegraph at Maple MI 6-1020 HAROLD R. CHALMERS B. MAYNARD ZIMMERMAN

KAY COOLEY INC.

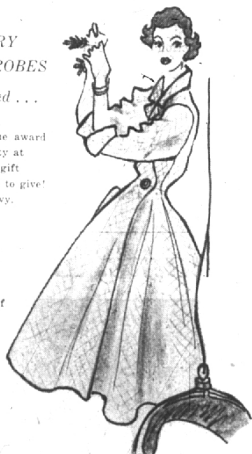
190 W. Maple Birmingham, Mich. MI 4-7744 1561 Washington Blvd. Detroit, Mich. WO 2-1500

SAYBURY QUILTED ROBES

have arrived... We give them the award on the best quality at a small price. A gift you will be proud to give! Aqua, red and navy. Sizes 10 to 18.

22.95

The study coat of same quality at 19.95



The slippers... plain or black velvet. Sizes 5 to 9.

4.95

They have a real 'indoor-outdoor' sole. Make your selection early!

STORE OPEN EVERY NITE TILL CHRISTMAS

Russell Stover CANDIES

The gift everyone enjoys!

Chocolates & Butter-Bons

A Gold Gift Box of chocolates (milk and dark) creams, nougats, nut clusters and Butter-Bons. Cello index identifies each delicious piece

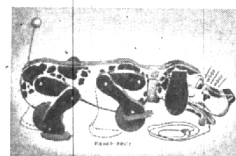
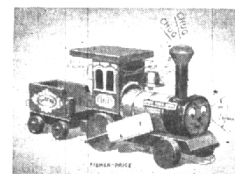
Pound Box \$165 Two Pound Box \$325

Distinctly Fresher... Definitely Finer

SHAIN'S Rexall DRUGS

YOU CAN DEPEND ON ANY DRUG PRODUCT THAT BEARS THE NAME REXALL

TOYS! TOYS! TOYS!



Make this an Educational Christmas for the "Small Fry"!

TOYS are TOOLS by Which CHILDREN LEARN

Give Them GOOD TOOLS!

Select them from our large assortment of leading brand educational toys.

OPEN EVERY EVENING UNTIL CHRISTMAS

LITTLE FOLKS SHOP

175 West Maple

Birmingham