

Springdale Course Membership Fees Now Half-Price

Come on out and enjoy a round of golf on the City of Birmingham's own course . . . your own course . . . Springdale park. Season tickets are half price now.

The short but tricky nine holes are a challenge to every golfer and still do not discourage the learners. Both beginners and more advanced golfers find that Springdale's course offers the maximum in playing entertainment.

City officials and club attendants point out that the course is solely self-supporting, not aided by tax monies of any kind. The course, then, is dependent upon the residents who take advantage of the course minutes away from their homes. In order that the club may undertake improvements, residents must show their appreciation of the course by playing regularly.

PLANS IN THE future call for an enlarged club house and a separate waste system for the course's greens and fairways. These services are directed at those who play the course and must be financed from greens fees from the players.

According to Superintendent Robert Faustet who is the golf pro at Springdale, the greens are in good condition despite the little rainfall during June and July. There are now over 200 club memberships owned by Birmingham residents and officials believe that there are many more interested golfers in the area that would enjoy the Springdale course if they were to play it.

A handicap golf tournament is being planned for sometime in September. Entry blanks for the tournament are available at the course club house and must be returned to the course by Friday night.

THE TOURNAMENT will be divided into three classes. One class for men 17 years old and older, one for boys under 17, and a third for women and girls. An entry fee will be charged to cover the cost of the prizes.

So come on out and see how you can do on this part 23 course. Enter the tournament and test your skill in a Birmingham project. The course is there in good shape. Your patronage will gain you better services.

Side Yard Lines Face Delay Again In Southfield

Southfield township's proposed amendment to the zoning ordinance which would require greater side yard lot line minimum widths went into the second round of its fight to become a reality Monday night at the board meeting.

Attacked this time by residents of Beverly Hills subdivision number five for falling short of protecting existing residences in that area, the amendment was referred back to the zoning board for further study and recommendation.

Township officials have been attempting to gain an enforceable ordinance requirement for side yard lines for the past ten months. Many board members expressed disappointment over a further delay in passage of the amendment. Claude E. Whipple, 2111 Beechwood, submitted a petition signed by 41 of the 45 home owners in the subdivision requesting that the zoning be changed as soon as possible to require all lots to be 75 feet wide with a house containing no less than 10,000 square feet.

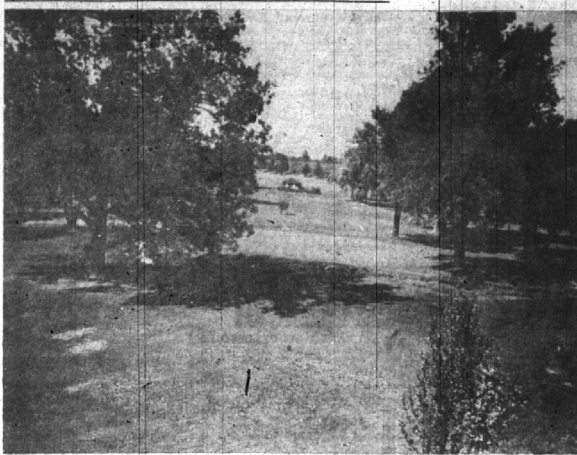
HE CHARGED that Knight Menard, realtor of the property in Beverly number five, "forced us all to buy two lots when we purchased land in the subdivision so that all homes would have adequate room."

"Now he is selling single 60 foot lots for the erection of homes and destroying the beauty of our residences," Whipple said.

When Supervisor William Roeser answered that many lot owners could not buy lots on either side of their lots and could not be deprived of the use of their land, Whipple countered, "Our only aim is to prevent builders from erecting shanties next to our homes. To answer to the square foot requirements of the subdivision, a man could and well might build a three-story colonial."

"WE ARE ASKING that the building inspector stop issuing any more building permits until the Southfield board and the zoning board have acted on our petition and strengthened the amendment," Whipple stated.

Both the petition and the proposed amendment were referred back to the zoning board and an investigation promised to determine whether the developer actually forced any of the Beverly number five residents into purchasing two lots in the past. Whipple agreed to bring in signed affidavits from those home owners who made the two lot purchase.



SPRINGDALE GOLF CLUB'S WELL-KEPT FAIRWAYS INVITE PLAY But par here is not as easy as this picture might suggest.

City Eases Restrictions on Use of Water

Birmingham's restrictions on the use of water for lawn sprinkling were ended this week by city commissioners' action.

FOR THE PAST 10 weeks residents had been asked to sprinkle only on odd or even days, depending on the side of town in which they lived.

City commissioners, in lifting all but the emergency restriction, praised local citizens for their cooperation during the water emergency imposed by unseasonably hot weather.

They said they noticed extremely few violations, and mentioned

consists of 12 swells or dips.

that some residents even cooperated to the extent of letting their lawns go unwatered for days at a time.

In the Water In order that roadbuilding of streets in Golfview Heights subdivision may proceed without delay, a tree in the center of Golfview boulevard at Northlawn will have to be removed, City Manager D. C. Egliert has reported to the city commission.



The old time prospector loaded his burro, rounded up his rations, took along his pan and off he went into the mountains looking for his fortune. Sometimes a strike was made, but more often the only gain was a good deal of exercise.

Nowadays we know that fortunes are earned by planning carefully rather than by just plain hoping. Thrifty farsighted people use the tested system of reading the advertising in the ECCENTRIC for outstanding bargains of proven quality.

Read Eccentric Advertising PATRONIZE BIRMINGHAM MERCHANTS



shop here

SMOKED BEEF TONGUES 59^c lb.	LAKESIDE BRAND SLAB BACON <small>WHOLE or HALF SLAB</small> 49^c lb.	Young, Tender BABY BEEF LIVER 79^c lb.
---	--	---

PLUMROSE IMPORTED DANISH **CANNED HAMS** Skinless and Boneless

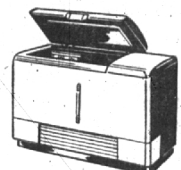
\$4⁶⁹ 4 Lb. Can	\$2³⁹ 2 Lb. Can
--------------------------------------	--------------------------------------

Fill Your Freezer NOW!

With U. S. Prime and Choice Grades of Sides and Hinds of Beef and Lamb

No Extra Charge for Processing

• **WHOLE RIBS OF BEEF 73c lb.**



Sfire's Own Bulk SAUSAGE <small>Seasoned Just Right</small> 69^c lb.	FRESH BEEF TONGUES 54^c lb.	MEDIUM GRADE A EGGS <small>Strictly Fresh</small> 67^c doz.
--	--	---

Lakeside Brand 12 to 15 lb. HAMS <small>WHOLE</small> 69^c lb.	New York, sharp HERKIMER CHEESE 89^c lb.
---	---

Sfire's Own Kosher Style CORNED BEEF 79^c lb.	Peter's Hawthorne Brand Sliced Bacon <small>1 LB. LAYER</small> 59^c lb.
--	---

Snow-Crop FROZEN FOODS

Orange and Grapefruit Blended, Unsweetened JUICE or ORANGEADE

2 cans 33c

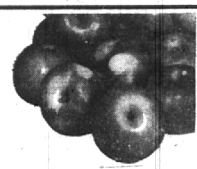
Sfire's

New & Tasty GRUNLOCH'S FRENCH HERB DRESSING 65^c bl.	AUNT JANE'S — KOSHER STYLE DILL PICKLES <small>2 qts.</small> 69^c
---	---

Wolf River

APPLES

3 lbs. 29^c



CAMPBELL'S Tomato Soup 3 CANS 29^c	HILLS BROS. COFFEE <small>1 lb. can</small> 83^c
---	---

AWREY BAKERY

Butterscotch Nut Cookies per dozen 48c
 Fresh Fruit Blueberry Tarts 3 for 40c
 Strawberry Filled Danish Horn Sweet Rolls 6 for 55c
 Home Style Chocolate Loaf Cakes each 69c
 Flavorful Banana Cup Cakes 6 for 42c
 Almond Apricot Filled Danish Coffee Cakes each 70c
 Extra Tender Twisted Glazed Donuts 6 for 34c
 Speciality Bread—A Different Variety Every Day
 Cinnamon Sugar Dunkers per dozen 52c
 (FRIDAY & SATURDAY ONLY)
 Delicious Chocolate Frosted Marble Layer Cakes each 65c
 (FRIDAY & SATURDAY ONLY)
 Cherry Pecan Angel Food Cakes each \$1.30
 (SATURDAY ONLY)
 Apricot Pineapple Cream Layer Cakes each 85c

BIRDS EYE French Style Green Beans 10 oz. pkg. 2 for 49c Orange Juice 6 oz. can 2 for 37c	SUNSHINE GRAHAM CRACKERS 33c box HEINZ CHILI SAUCE bottle 35c California Mountain Bartlett Pears 2 lbs. 29^c case \$5.29	HEINZ KETCHUP 2 bottles 47c FRESHAP WAX PAPER 2 rolls 49c
--	--	---

COMPLETE TRAVEL SERVICE
 Phone MI 4-5550
 Plane — Train — Ship — Tours
 Boat Reservations
 Birmingham Travel Service
 Grace Plummer Kelly
 In The Campbell Building