

Water Meter Installation Charges Upped

Depending on the size, installation fees for new water meters have been increased from \$5 to \$25 by Birmingham city commission action.

The normal 5/8th-inch house service goes to \$20 from \$15, a 1-inch meter to \$44 from \$25, a 1 1/2-inch to \$80 from \$65, and a 2-inch to \$120 from \$100.

Larger meters will be a cost, which range from \$327.60 for a 3-inch to \$1,038 for an 8-inch.

Since 1945, the city has charged slightly less than actual meter cost, but now the charges are to the nearest dollar figures above cost for the smallest sizes.

Alley Roadotting Hearing Sept. 8

Roadotting of the alleys in the block bounded by Park, Brookside and Ravine will be determined at a public hearing Sept. 8 before the Birmingham city commission.

Estimated cost of the project is \$328, which commission Monday night indicated would be assessed 100 per cent against abutting properties.

Use Classified Ads—They Sell!

SHEET METAL WORK

Eaves Traoughing
Slate Roof Repairing
Federal 2-9367

THE NATIONALLY FAMOUS Mountain Valley Mineral Water

High Springs, Georgia

This crystal clear, delightful, refreshing mineral water is non-carbonated. Not a trace of sodium. Contains essential minerals. Important for health. CALL FOR A CUP TODAY!

WEGENER'S WINE SHOP
PHONE MI 4-5235
255 PIERCE STREET

Let us electrify your SINGER treadle machine!

For easier, more comfortable sewing, convert your present SINGER Treadle Machine into an electric!

Here's what you get:

- New SINGER motor.
- New SINGER speed control.
- New SINGER spotlight.

We will convert your treadle into a modern console cabinet electric for \$22.50.

Phone or visit today your...
SINGER SEWING CENTER
177 WEST MAPLE
Phone MI 4-0050

LEGAL NOTICES

CITY OF BIRMINGHAM, MICHIGAN
NOTICE TO PROPERTY OWNERS
LOCATED TO FOURTEEN MILE ROAD

The City Commission of the City of Birmingham will meet Tuesday, September 2, 1952, at 8:00 P.M. in the Commission Room in the Municipal Building to consider any objections to the construction of certain improvements on Fourteen Mile Road, described herein, and to the creation of a special assessment district, created to defray the cost of construction of said improvements to the district, each payment to widen the existing 18 ft. strip on Fourteen Mile Road from Lincoln to Fortness Mile Road.

The Commission proposes to create a special assessment district to defray the cost of this construction and said special assessment district shall consist of the following described property:

Sheffield Estates No. 1
Lots 24 to 31 incl.
74 to 81 incl.
296 to 312 incl.
314 to 324 incl.
325 to 400 incl.
401 to 412 incl.
413 to 424 incl.
425 to 436 incl.
437 to 448 incl.

Eden Road Subdivision
Lots 1 to 9 incl.
10 to 17 incl.

Plans and estimate of cost of this project are filed with the Clerk of the City of Birmingham for examination by the public.

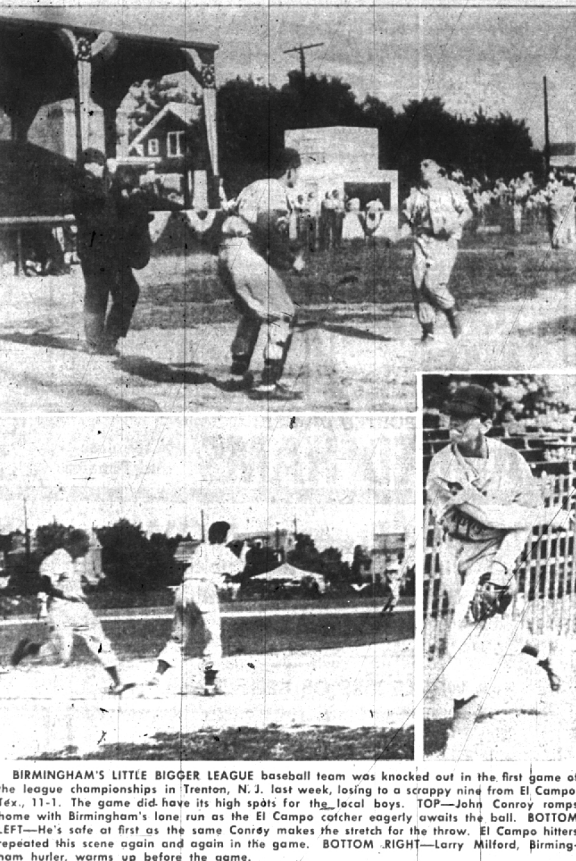
Irene E. Hanley, City Clerk.

August 12, 1952. City Clerk.

UPHOLSTERERS

Telephone Directory
YELLOW PAGES

To find the services you need, use the **YELLOW PAGES** OF YOUR TELEPHONE DIRECTORY



BIRMINGHAM'S LITTLE BIGGER LEAGUE baseball team was knocked out in the first game of the league championships in Trenton, N. J. last week, losing to a scrappy nine from El Campo, Tex., 11-1. The game did have its high spots for the local boys. TOP—John Conroy ramps home with Birmingham's lone run as the El Campo catcher eagerly awaits the ball. BOTTOM LEFT—He's safe at first as the same Conroy makes the stretch for the throw. El Campo hitters repeated this scene again and again in the game. BOTTOM RIGHT—Larry Milford, Birmingham hurler, warms up before the game.

Play Continues In B'ham Tennis Club Championship

Championship play in the men's doubles and singles has been extended by the Birmingham Tennis Club to compensate for delays caused by the two-day Invitational Tournament at Oakland Hills Country Club last weekend.

The incomplete men's singles will resume with the semi-finals between second-seeded Jim Tobin, University of Michigan star of a decade ago, and fourth-seeded Leonard Weiner.

The other semi-final bracket will see Peter Stewart, seeded third, contend with Jerry Schram, newly-crowned junior champion. Schram eliminated Dick Gabori, club champion for the last three years, by the score of 6-4 and 6-2.

THE WOMEN'S singles crown was won Sunday by Miss Audrey Braun who defeated Mrs. Harriet Gabori in straight sets, 6-0, 6-1. In fashioning her victory Miss Braun, top seeded player at Kingswood this year, downed Miss Joey Neff in the semi-finals 6-0, 6-1.

Mrs. Gabori gained the semi-finals by defeating Miss Jane McKee in three sets, 6-3, 2-6, and 6-4.

IN WINNING the junior singles title Jerry Schram, top netter of Ferndale's Lincoln High, downed George Reindel III, member of Andover Academy's tennis team, by scores of 6-2, 6-1.

In the semi-final matches Schram won from Gary Wright, number one player of Pontiac High, 6-1, 6-1, while Reindel defeated Howard Johnson, Jr., of

Birmingham High, 6-1, 6-1.

ENTRY BLANKS have been sent to leading players in South-eastern Michigan for the annual Birmingham Tennis Club Invitational tournament. Jack Watson has been named tournament chairman.

Play will begin Saturday, September 6, on the Kingswood courts, and continue through Sunday, September 14.

Defending champions include women's singles title holder Elaine Lewicki, and the mixed-doubles champions Mary and Rudy Hernandez.

Bob Dixon will defend his men's singles crown, and will team with Bill Mikulich in defense of their men's doubles title.

PECK'S
Cash and Carry
Plain Dresses, Suits, Topcoats \$1.39
CLEANED and PRESSED
For Delivery PHONE MI 4-7724
Service WOODWARD—NEAR MAPLE

STERNAL'S
for WHIRLPOOL WASHERS AND DRYERS
FREE CUSTOMER PARKING
In Rear of Store

Coming Soon
Rock N' Roll the 4 in 1 stroller. No fuss or bother to have a stroller, walker, rocker, and sled with chrome runners all in the ideal stroller for year 'round use, winter and summer.

Exclusive in Birmingham at
LITTLE FOLKS SHOP
175 WEST MAPLE
There is only one Little Folks Shop in Birmingham

Farm System Ends In Little League

The eight-team Little League farm organization ended season play last week with the Lions taking the honors on a 6-1 record.

Two second division clubs stole the limelight in the last week of play for their stubbornness on the field. The Bears and the Packers played successive 6-6 ties on two nights, refusing to give the game

up. League officials finally called a halt to the competition after the second tie game.

In other action last week the Lions eked out a 1-0 win over the Rams; the Redskins walloped the Eagles 17-1 and the Steadys took a 15-3 win over the 49ers.

STANDINGS

Team	Won	Lost
Lions	6	1
Redskins	5	2
Steadys	4	3
Bears	4	3
Packers	2	7
Rams	1	6

SPECIAL SELLING
OF NEW PATTERNS IN
PERCALES
Three Days Only
THURSDAY, FRIDAY, SATURDAY
49c Per Yard
The F. J. Mulholland Co.

START THE FALL SEASON WITH A NEW KITCHEN FLOOR

quality work
Linoleum
Vinyl
Rubber
Counter Tops

T. E. HOGAN CO.
2865 Woodward Avenue
3 blocks south of 12 Mile
Open Friday 7:11 to 9 P.M. LI 4-3300

Wants Citizen's Group to Study Report

The city's firm of consultants on sewer problems currently is working on an accumulation of facts and figures involved in the relief of the Birmingham sewer system, City Manager D. C. Egbert informed city commissioners Monday evening.

"The study will include both the expansion of our present disposal plant and possible inclusion of the eastern half of the city in the Southeast Oakland disposal authority," he said.

Commissioner Lance C. Minor inquired about the advisability of creating a citizen's committee to go over the consultant's figures when they are available.

"I know of several local men who are familiar with the costs, etc. of this sort of construction," Minor added.

Mayor Dean G. Beier said the proposed solution.

At the Aug. 5 primary, a charter amendment which would have permitted the city to join a disposal authority as a means of relieving the local sewer problems was defeated by a several hundred vote margin.

design "Originals"

Porta-bilt
hardwood
Kitchens

Even the smallest kitchen can have that "showplace" look, like those featured in leading magazines—if it's an original designed by a Porta-bilt specialist.

Investigate before you build or remodel.

Imperial Maple, 8 Colors and White

ROYAL OAK SUPPLY CO.
2924 N. Woodward, Royal Oak Lincoln 4-8560
Open Thur., Fri. & Sat. till 9.

REMODELING or BUILDING
WE HAVE WHAT IT TAKES !!

Dimensional Lumber in Fir
Panelling in Knotty Pine
Knotty Cedar
Weldtex
Plywood Panels
Insulation in Balsam Wool
Fiberglas
Rock Wool
Zonolite

Mouldings and Doors in clear White Pine
Flooring in Oak & Fir

COME IN AND LET US ASSIST AND SERVE YOU

BIRMINGHAM LUMBER & Supply Company, Inc.
1025 HAYNES ST. PHONE MI 4-3636

HOURS: 7:30 to 5:00, Mon. thru Fri.
7:30 to 1:00, Saturday

SPECIALS FOR YOUR LABOR DAY CELEBRATION

FRESH PORK LOIN ROAST Rib End 56^c lb.

Pre-Cooked Smoked Ham Shank End 59^c lb.

Farm Fresh FRYERS 49^c lb.

4 1/2 lb. CANNED HAM \$4.49

Choice BEEF CHUCK ROAST 69^c lb.

Peabody Farm, Hale Haven

Tender CELERY HEARTS Bunch 15^c

Home Grown PEPPER SQUASH Large 2 for 25^c

PEACHES ARE NOW IN!!

Good For Juice CALIFORNIA ORANGES . 2 doz. 59^c

MORE FOR YOUR MONEY All the Time

Gold Medal Flour 5 lbs. 47^c

Old Monk GIANT, RIPE OLIVES 37^c

All Sweet OLEO . 27^c lb.

CANE Sugar 5 lbs. 47^c

Crisco 3 lbs. 79^c

Hills Bros. COFFEE . 84^c lb.

Franco American MACARONI 15 1/2 can 2 for 29^c

Libby's Tomato Juice 46 oz. can 29^c

Del Monte Fruit Salad 2 1/2 glass 49^c

Deming's Red, 1 lb. can Salmon 77^c

Hand Packed, Premier Tomatoes 2 1/2 can 31^c

Snow Crop ORANGE JUICE 6 oz. can 2 for 33^c

Birdseye PEAS 6 oz. can 2 for 45^c

PEABODY'S Super MARKET
154 HUNTER AT MAPLE • WE DELIVER • Free Parking Front and Rear of Store
OPEN EVERY EVENING EXCEPT SATURDAY SUNDAY HOURS — 10 A.M. TO 8 P.M.