

Vacate Easement On Private Land

City Commissioners Monday night approved the vacation of an easement over the southerly eight feet of lot 48 of Pleasant Meadow re-subdivision and the north 135.8 feet of block four of Jaglewood Farms-subdivision, on the petition of Commissioner Lance C. Minor and his wife, Dorothy G. City Attorney Forbes S. Hascall reported to commissioners that he found no deed of the property as a public easement to the city and stated that the property should be vacated in favor of the petitioners.

ONLY A RUMOR . . .

I wish to inform the Public that all rumors to the effect that I have or am about to sell Devon Gables are completely without foundation.

DEVON GABLES

(Signed) LAURA TURNER
OWNER



Men's Wear News For Fall BACK TO NATURAL

The nature of things to come in men's suits for fall is a willing return to naturalness of line and of fabric.

Lebow, well-known maker of fine clothing for men, hastens that return by bringing to the men of America LAXEYCLOTH, an exclusive Lebow fabric.

In addition to the contribution of a natural fabric, Lebow, long-famous for its fashion and fabric originalities, provides the Narrow-Line model to complete nature's role in LAXEYCLOTH. Narrow-Line emphasizes the wearer's natural lines without exaggeration. Flap pockets and center vent lend their own special touches.

\$95.00

See the New Fall Suits

at

YOUNG'S OF BIRMINGHAM

203 PIERCE ST. OPEN FRIDAY EVENINGS
FRENCH, SHRINEK and URRNER Shoes



A TEACHER and a businessman, Gertrude Engleman and Fred W. Braga, both of Birmingham, examine a chart of economic trends at the annual Workshop of Economic Education which ends this week at Michigan State college. Miss Engleman teaches at the Detroit Pershing high school, while Braga is an economic analyst for the Detroit Edison company. The three-week work shop session annually attracts more than 50 teachers from all parts of the state to hear talks by some of the nation's outstanding economists.

Dorothy Hills and Margaret Nault

of the

DOROTHY HILLS BEAUTY SALON

are now located at

4318 N. Woodward Ave.

Royal Oak, Michigan

Just South of 14 Mile Road

For Appointment Phone LI. 5-1257

Featured at



Aldon Cotton Broadloom

with this

BONDED GUARANTEE

ALDON will wear better than other carpets in its price range.

Cleaning, Fade Resistance, and Moth Resistance are also guaranteed. Every Aldon carpet has the finest Latex backing available. Plus the most important feature . . . ALDON carpets are Quality Quaranteed.

ALDON America's greatest Carpet value

- Beautiful colors
- Richest hues dyed
- Seamless widths up to 15 ft.
- Featured in famous national magazines



ARTIST & HOBBY SUPPLIES

PHONE LI 1-6070

MICHIGAN'S FINEST WALLPAPER SELECTION

OPEN FRIDAY & SATURDAY EVENINGS
W. 12 Mile Rd. Just East of Post Office, Berkley

Commission Holds On Zoning Action

City Commissioners Monday night held to their action of last commission meeting, denying any rezoning of property within the triangle bounded by lots 54 and 55 of Graveland terraces, Eton road and the Grand Trunk Railroad right-of-way.

Attorney George A. Cram, spokesman for both the Grand Trunk and Hazel H. Newell, owner of four lots within the triangle, sought to clarify the commission's action when they refused the rezoning to the railroad. Cram claimed that the motion of last meeting held only to the description set forth in the railroad petition, and did not hold to Newell's property.

COMMISSIONERS AGREED that their vote was meant for the entire triangle and told Cram that they would not reconsider the rezoning unless Cram or Newell repititioned the commission. Commissioners, however, refused to allow the sale on both days, claiming that it was city policy to restrict solicitations of this nature to be held to one day. Selection of the day will be decided later.



START NOW - TO SAVE BEFORE YOU SPEND

How much money have you earned since you took your first job? How much of this surprising sum have you saved? Take a minute to figure how much more you expect to earn before you retire. How much of this will you save?

Financial security for most of us takes time to build. But dollars accumulate surprisingly fast when they are systematically saved. Every payday save first, then spend. Save regularly at this friendly bank. One dollar opens an account.

WABEEK STATE BANK of DETROIT

BIRMINGHAM OFFICE - WABEEK BUILDING

KINDERGARTNERS

are welcome at the
detroit country
day school



Lunch
Optional

UN 1-9746

if they are 4 1/2 by Sept. 12

Half-day Sessions

REMODELING or BUILDING

WE HAVE WHAT IT TAKES ! !

Dimensional Lumber in Fir

Paneling in Knotty Pine

Knotty Cedar

Weldtex

Plywood Panels

Insulation in Balsam Wool

Fiberglas

Rock Wool

Zonolite

Mouldings and Doors in clear White Pine

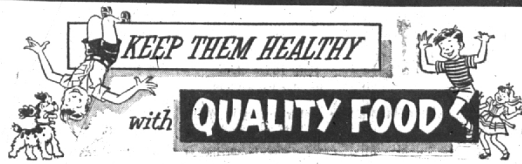
Flooring in Oak & Fir

COME IN AND LET US ASSIST
AND SERVE YOU

BIRMINGHAM LUMBER & Supply Company, Inc.

1025 HAYNES ST. PHONE MI 4-3636

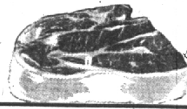
HOU 5: 7:30 to 5:00, Mon. thru Fri.
7:30 to 1:00, Saturday



SMOKED HAM Shank End 59c lb.

Choice Beef

POT ROAST 69c lb.



Farm Fresh FRYERS 49c lb.

PORK LOIN ROAST Rib End 59c lb.

Peabody Farm PEACHES Golden Jubilees \$2.98 to \$3.98 bushel

Ripe Table

TOMATOES 2 pounds 19c



Crisp Tender

Pascal Celery Large Bunch 19c

FREE! Coca Cola for Kids SPAM 12 OZ. Can 48c

Chicken of the Sea TUNA FLAKES 31c

Hunt's, no. 2 1/2 can TOMATOES . 27c

Franco American, 15 1/2 oz can SPAGHETTI 2 for 27c

Armour Cloverbloom BUTTER . . . 76c lb.

PET or CARNATION

MILK Tall Can 14c

Del Monte, no. 2 1/2 Jar Fruit for Salad 51c



Farm Fresh EGGS Medium Size Grade A 66c doz.

SNOW CROP Orange Juice 6 oz. can 2 for 33c
PEAS . . . 12 oz. pkg. 2 for 43c

PEABODY'S Super MARKET

154 HUNTER AT MAPLE • WE DELIVER • Free Parking Front and Rear of Store
OPEN EVERY EVENING EXCEPT SATURDAY SUNDAY HOURS - 10 A. M. TO 8 P. M.