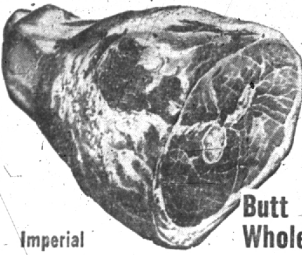


GET ACQUAINTED AT YOUR NEIGHBORHOOD KROGER STORE

Every Face is Friendly!
Every Price is Low!



Kroger-Cut, Vacuum-Wrapped Smoked Hams Assure You of All the Center Slices on Every Half Ham You Buy!

Butt End lb. 73¢
Whole Ham . . . lb. 69¢

Smoked HAM

Full Shank Half lb.

65¢



Kroger
LIVE BETTER FOR LESS

Not the Cheapest but the Best

Ground Beef 3 lb. 1.77

Toppy Sliced Breakfast

Bacon lb. 53¢

Michigolden—Oven-Ready

Ducks lb. 63¢

Fillets of

Ocean Perch . . lb. 37¢

Hillsdale Sliced

Pineapple . . . No. 2 Can 25¢

Kroger Crushed

Pineapple . 2 No. 2 Cans 49¢

In Home-Tote Bag

Kroger Milk 6 Large Cans 83¢

Libby

Pineapple Juice 46-oz. Can 29¢

Ruby Bee Strawberry

Preserves . . 12-Oz. Jar 29¢

Kroger Tea Bags

Iced Tea . . . 50-Ct. 49¢

Hygrade

Party Loaf . . 12-Oz. Can 43¢

Gold Seal

Dill Pickles . . ½ Gal. 49¢

Jumbo 36 Size

Cantaloupe . . . 2 for 49¢

Tender, Golden Corn and Butter Mmm!

Sweet Corn . . 12 Ears 39¢

All Vegetable

Spry 1-lb. Can 31¢

Regular Size Bars

Palmolive . . . 3 for 25¢

The Foaming Cleanser

Ajax 3 Cans 39¢

For All Baking and Frying

Crisco 3 lb. Can 85¢

Clean Clothes Faster

Surf Large Package 31¢

Lots More Suds with

Super Suds . . Large Package 28¢

Regular Size Bars

Cashmere Bouquet 3 for 25¢

Large Bath Size Bars

Cashmere Bouquet 2 for 23¢

Gold Medal Flour
25 Lb. \$1.99

5 lb. 49¢
10 lb. 89¢

Cantaloupe . . .
Sweet Corn . . .

Indiana Watermelon
99¢

Big, Luscious Red-Ripe, Mellow Beauties Serve Ice-Cold!

Whole
Half . . . 59¢

Prices Effective Through Sat., Aug. 16, 1952

All-Stars Gain Final Zone Game

Birmingham's Little Bigger League all-stars qualified for Wednesday night's final round of the zone tournaments by defeating a tough Steubenville, Ohio, team 5-2 Tuesday night.

One thrill-packed inning, the sixth, brought Birmingham fans to their feet. With two men on base, John Conroy slammed a double to score the tying and winning runs and back up the two-hit pitching of Birmingham's Larry Milford.

In the early innings of the game Steubenville looked like a sure bet to meet Kankakee, Ill., in the final game. Birmingham's leading was loose and the big boys from Ohio seemed ready to pounce on Milford whenever they wished.

STEUBENVILLE'S attack never materialized as Milford continued to baffle their hitters and Conroy's timely smash was all that the slender hurler needed to post his win.

In Tuesday afternoon's game, Kankakee, Ill., strong at the plate and in the field, walloped a stubborn Kokomo, Ind., team, 8-3.

Although Kokomo's defense was sloppy, the game wasn't decided until the first half of the seventh and last inning when Kankakee coupled Indiana errors and scratch hits to score four runs.

Gas Sablette was the winning pitcher.

Home runs by Kankakee added to their margin. First baseman Dave Green slammed one over the right field fence in the first inning and Second Baseman Brouillette lined one to left in the second inning.

Because of news deadlines, The Eccentric could not obtain the results of the final game.



Overfusing Circuits

The fuse provided in the electrical circuits in homes, stores or other buildings serves the same purpose as a safety valve. When an overload is applied to any one circuit (electrical wire) this fuse, if of proper size, will blow or burn out thus removing 90 percent of the fire hazard resulting from defective electrical appliances or wiring.

The greatest danger in buildings where electrical energy is used, develops because of one of two factors:

(1) Electrical appliances or wiring which has not been properly maintained or installed.

(2) Because an overload, or too great a demand, has been applied to a circuit (electrical wire) for it to carry.

In most homes, wiring circuits, under a special power circuit is installed are of 14 gauge wire. This wire, according to engineering data, is designed for a normal load not to exceed 1650 watts, the capacity of the 15 amp. fuse or safety valve on that circuit.

TO INSTALL a heavier fuse on a 14 gauge wire circuit is the same as holding down a safety valve on a steam boiler. It removes from the electrical system the safety which was built into it. Don't pyramid electrical outlets with adapters, one on top of another. Have an extra outlet and circuit run from your master fuse box for the additional load.

If a fuse on a power circuit has to be replaced and requires something larger than 15 amperes, check with your electrical utility company or an electrical contractor. They will inform you as to the right size and correct installation of such fuses. Power circuits are generally installed for heavy demand such as home heating units, fans, refrigerators, etc.

PLAY IT SAFE, use the right fuse in the right place and avoid a bad fire loss.

BIRMINGHAM FIRE DEPT.

BIRMINGHAM BUSINESS BRIEFS

Birmingham Firm Gets Concrete Slab Agency

The Birmingham lumber and supply company, 1025 E. Haymarket, has been named the local outlet for pre-cast concrete slabs for walls or partitions.

The concrete slabs are reinforced with steel, and are available in four standard colors. An additional 25 colors are offered for special demand.

Available in two standard sizes the slabs are made of a type of concrete especially resistant to frost and salt action.

IDS Representative Attends Convention

Timothy Thompson, 1028 Latham, local distributor of investment securities representing Investors Diversified Services, Inc., is attending a national meeting of the company's southeastern district central regions in Minneapolis August 14, 15 and 16.

The meeting consists of educational discussions on the company's securities distribution and investment management activities and tours of the company's home office departments in Minneapolis.

Play Ball!

STATE CHAMPIONS see action in Birmingham as Little Bigger Leaguers vied for the zone title at St. James field Tuesday and Wednesday of this week. AT TOP: A Kokomo (Ind.) slugger sizes up the pitcher in a tense moment of Tuesday's game. AT LEFT: Looks like even the umpires are arguing a point. Red Kinaird and George Weitzel, Detroit Federation umpires, kept the games running smoothly. AT BOTTOM: Kokomo reserve players waltz intently when their hurler gets in trouble in the first inning of their game with Kankakee, Ill. (Eccentric Staff Photos)

Picture Lending Library Brings Art Into The Home

Many a local home will be brightened this winter by a colored reproduction of contemporary art. The art, representing the work of such as Picasso, Miro, Cezanne, Renoir, Matisse, Paul Klee and others, is supplied by the Little Gallery's unique innovation, a "lending library" of pictures.

Started last year with a group of twelve couples, the idea was received so enthusiastically that service is going to be extended.

FEELING THAT a picture should be seen in home surroundings to be appreciated, Peggy deSalle frames the pictures selected by the group for rotation and sends one home with each couple. After a month in each home the picture is exchanged for another until, at the end of the year, the entire selection has been hung in every home.

Now on "leasing terms" with modern art in the home, the participating couples are able to make their permanent choices with confidence, should they decide to purchase a picture.

APPLICATIONS FOR inclusion in this year's program are being taken at the Gallery until September 1. When the selection of pictures is to be made, William Wolfenden and A. Cavallo, members of the educational staff of

the Detroit Institute of Art, will be on hand to acquaint the group with the backgrounds of each artist whose work is chosen. Selections will be made from fifty pictures including the contemporary work of French, Italian and Swiss artists, pictures purchased by Mrs. deSalle on her recent European tour.

GLENN WING POWER TOOLS
• Atlas • Delta
• Porter-Cable
• Shopsmith
• DeWalt Saws
1437 SOUTH WOODWARD
Five blocks North of 14th St. & 4th
BIRMINGHAM, MI 4-0444
Daily 8 to 6:00—Fri. 8 to 8:00

Use the Eccentric Classified Ads for Best Results