

Are you not grateful that Congress cannot extend control of the coming and going of the seasons? If that political body were dependent upon to provide us with the weather, can't you imagine how it would get every phase of the seasons all mixed up, as it does legislation.

## NEW ENGLAND COLONIAL



near Quarton School

Authentic and charming . . . in perfect condition . . . spacious rooms . . . a lovely setting. Truly a home to be proud of . . . a wonderful home to entertain in . . . a perfect home for family enjoyment.

**YOU'LL APPRECIATE THE:**

- Panelled Library (with fireplace) . . . and the flag-paved garden porch
- Living Room . . . panelled and recessed fireplace wall
- Gracious Dining and Breakfast Rooms . . . large Kitchen
- 4 generous Bedrooms (the owner's has a dressing room) . . . 3 tiled baths
- Finished Play Room with fireplace . . . hobby and storage rooms
- Large closets . . . floored attic for storage
- Wide 160 by 150 fenced lot . . . sprinkling system

Time tested . . . superbly built . . . air conditioned and insulated this charming home offers much more than one just being built or finished. No costly extras here . . . it's ready for you now! We can see it today!

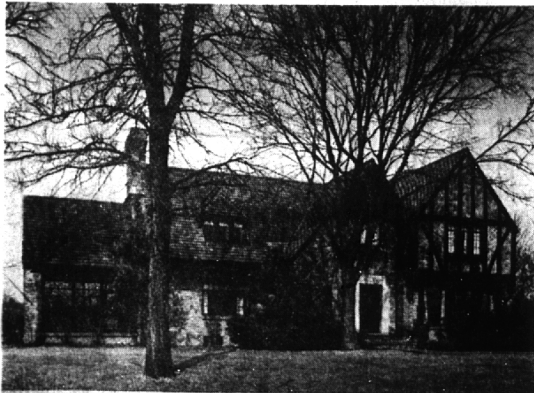
CALL

**MAX BROOCK INC.**  
REALTORS  
ESTABLISHED 1898

300 S. Woodward Ave.

Midwest 4-6700

## STATELY ENGLISH BRICK IN THE HEART OF BLOOMFIELD HILLS



**SCHOOLS**, from kindergarten through college, for your children at your door. Vaughan Public School, Cranbrook School for boys, Kingswood School for girls, St. Hugo, Cranbrook church, Bloomfield Hills Country Club.

Living room 16' x 26'—fireplace; powder room, dining room, breakfast room, butler's pantry, panelled library.

4 large, cheery family bedrooms. 3 full baths with tub and stall showers, plus 2 maid's rooms and bath. 3-car attached heated garage. Recreation room—fireplace. Automatic oil burning heating plant. Screened porch.

1.15 acre beautifully landscaped and fenced lot. Black top street paving.

Call for price and other details.  
Inspection by appointment.

**GEO. E. MARKLEY**

460 W. Maple, Birmingham

Phone MI 4-1222



## Bits of Birmingham

One of Birmingham's older political observers dropped a note to this column a few days ago, saying: "The United States is world famous for its corn. It was here when the white man came, and has been converted to many human uses. It is good cooked just plain, on one of the cob; some folks even like it in bottles. Alas, of us like it in government . . . in the utterances of public officials . . . just corny corn!"

Do you know that, exclusive of the East Lansing high school, Birmingham has furnished the highest percentage of students for

Michigan State College? This information comes from no less a person than Dr. John A. Hannah, president of MSC. Apparently, then, something about this oldest of land grant colleges in the United States holds great attraction for the local high school grade.

In view of several recent dog poisonings and "intolerable conditions" being investigated in a few area riding academies under investigation for cruelty, the Oklahoma Animal Shelter has posted a \$5 reward for the apprehension and conviction of such persons. Mrs. Helen Ferguson,

West Valley road, points out also that a state law provides for imprisonment and fines, or both, for persons guilty of mistreating animals.

Without cost to the Baldwin Public Library, during 1932 a special group of volunteer women, members of Friends of the Baldwin Public Library, mended 316 books. This is but one of the various services which the Friends are helping out on, as part of a plan to aid the library in its services to the community.

"Just why do you dislike shoveling snow in the wintertime, you find it quite easy to use a spade in spring and summer in your garden?" this Wanderer asked several local men last week. Pausing a moment for reflection, each of them smilingly said: "With snow, all you get is exercise. With a spade you get exercise plus flowers and/or vegetables."

Mrs. Barrett (Josephine) Mason, 1944 Grandfield, has been awarded second prize in a recent short story competition sponsored by the Wayne university writing class for her entry, "The Pistol."

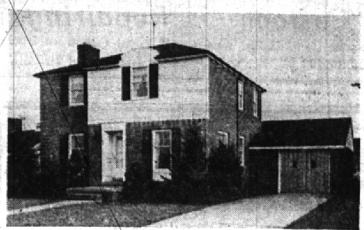
This Wanderer began to wonder last week at the sudden abundance of "wild life" in town. During one day we saw a rabbit dash across Hunter boulevard, spotted a huge and beautiful cock pheasant feeding in our back yard and watched four wild geese and their way north. Their flight was just at evening and as they passed between us and the setting sun it was one of those

things that puts a catch in the throat and makes one pause at the sheer wild beauty of a passing scene.

The people around the business area are quite familiar with parrots leaving children in parked cars, and, after a few minutes having the bored youngsters start

blasting the horn. A new angle was spotted one day last week when this Wanderer leaped about four feet as a horn blasted in our car. We turned around, ready to use our special icy glare on some child only to find ourselves face to face with a small dog in trying to see all that was going on, said (More BITS on Page 7, Part 2)

## ALL THIS . . .



For only \$18,500.00

You'll like this very fine home. You'll immediately see that it's comfortable, liveable, practical.

3 Bedrooms—Tile Bath.

Cozy living room with fireplace, bookshelves.

Corner cupboards in the dining room.

Screened Porch with awning. Lavatory.

Gas Heat. Storms. Screens.

Fine 70-foot fenced yard.

Attractive, recently built homes insure a pleasant neighborhood. Close to transportation, shops and the lovely new Torry School. Appointments arranged to suit your convenience.

**SNYDER KINNEY & BENNETT**  
INC.  
Realtors

239 S. Woodward

Midwest 4-7000

## YOU HAVE ADMIRIED IT NOW YOU CAN OWN IT



70 ACRE BLOOMFIELD TOWNSHIP FARM

Beautiful Colonial Farmhouse eight miles west of Birmingham on paved road. Expertly modernized and in excellent condition.

- Spacious reception hall with fireplace.
- Living room (30x16) with fine deep windows.
- Activities room (25x29) on 1st floor, with fireplace and powder room.
- Panelled library.
- Six bedrooms, three tiled baths.
- Three car garage with apartment above.
- Large barn, silo, chicken house, kennels.

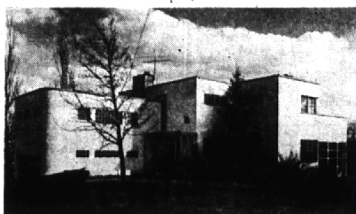
Here is everything to make country living enjoyable for you. Call us for further details and be the first to take advantage of this exceptional opportunity.

\$57,000

**WALSH, JAMES & WASEY Co.**  
REALTORS

431 S. Woodward Avenue, Birmingham  
Midwest 4-6500

## CONTEMPORARY SPLENDOR



overlooking Golf Course

The ultimate in convenient and luxurious living . . . unusual floor levels . . . first floor laundry . . . upstairs library with fireplace . . . mid-level living and recreation room . . . screened porch with dining grill.

4 bedrooms with 2 baths . . . maid's quarters with bath . . . separate tool and garden house . . . air-conditioned heat . . . unusual treatment of paneling . . .

On a large beautifully landscaped lot with sprinkler system . . . in addition to Birmingham golf course for a front yard . . . cement drive . . . house completely redecorated.

For comfort in living and ease in entertaining . . .

Call us today!

**BENJAMIN and STEPHENS, INC.**

259 S. WOODWARD — Realtors — BIRMINGHAM

Midwest 4-3232

Jordan 4-5728

## Quarton Lake Colonial



384 Lake Park Dr.

Here is a home that should appeal to the larger family. It has the dignity, peace and serenity that goes with a location on one of the finest streets in town. Yet, it is most convenient to buses, shops and stores, schools and churches.

This house was built by John H. Rosso, Builder. Earl Lundeen was the architect. The specifications (which we will gladly show you), call for such items as 2"x12" floor joists, threaded brass water pipes, copper gutters, eaves troughs and downspouts, and plastered basement walls.

Here are some salient facts:

1st FLOOR: LR 15'x22'3" (opens on to large screened porch overlooking lake), DR 12'6"x14', Libr. 9x12, butler's pantry and kitchen; lavatory; 2-car garage.

2nd FLOOR: BR No. 1 14'3"x15'; BR No. 2 13'15'6"; BR No. 3 10'x14'3"; BR No. 4 9'x15'6"; BR No. 5 12'x12'; three baths.

BASEMENT: Full, divided. Recreation room 15'x21' with fireplace.

HEAT: Steam-American Radiator boiler with new Delco Oil burner. 120 gal. electric water heater.

The lot is 100 feet wide with 262 feet average depth and enjoys a high elevation above Quarton Lake. Gladly shown by appointment. Let's see it today.

**WATT, MANUEL & SNYDER, Inc.**  
Realtors

There is no substitute for Integrity

298 S. Woodward

Midwest 4-6300