

U-M Accredits Local School Since 1894

Included among the 101 Michigan schools which have been accredited by the University of Michigan for at least 50 years is Birmingham high school.

Back in 1894, the local institution was accredited along with high schools from Benton Harbor, Escanaba, Iron Mountain, Ironwood, Menominee, Negaunee, Sault Sainte Marie and Tecumseh.

IT WAS 80 YEARS ago that the accrediting plan was launched by the university. Prior to that time, standard practice was to require a formal academic examination of all applicants for admission.

First high schools placed on the list in 1871, were Adrian, Ann Arbor, Jackson, Detroit Central and Flint Central.

Idea is now adopted in whole or in part by practically every college in the country.

Accreditation proves valuable to students from schools on the University list, not only in entering college, but in transferring to other secondary schools in the United States and foreign countries, according to L. E. Vredenoer, director of the Bureau of School Services.

More than 300 Michigan high schools were visited in the past school year by University representatives who make periodic visits to all schools to see whether they should remain on the accredited list.

Master's Degree of PAA Awarded Local Woman

A Master's degree of the Photographers' Association of America was awarded to Mrs. Gertrude Arnold, 322 Bloomfield court, at the convention of the group in Milwaukee Aug. 26-29. Mrs. Arnold was one of 23 photographers to receive the honor, during the annual Master's awards banquet.

DESTINATION . . . CAMPUS U.S.A.



Easy to Pack . . .
Simple to Suds . . .
Quick to Dry . . .

Vanity Fair Nylon Travelers

perfect companions for school

Streamlined time-savers, to go wherever you go with dainty, comfortable, durable ease. The slips; form-fitting tailored nylon, trimmed with lattice criss-cross, lined with nylon net. White; sizes 32 to 42, 5.95 to 6.95. The panties; skintite briefs, cut to fit perfectly. White; sizes 4 to 7, \$2. The pajamas; cool coolies in poppy with indigo, indigo with poppy; sizes 32 to 38, 16.95.

Jacobson's

Maple at Bates Birmingham

INTIMATE APPAREL PARKING LEVEL

**Effective
Friday, September 6**

We will be
**OPEN
FRIDAY EVENINGS
UNTIL 9**

D.J. Healy SHOPS
WABEEK BUILDING

Carrie Lee's Chinese and American Foods

856 N. Woodward
North End of Birmingham

WHY NOT TRY

Our Special Take Out Orders?
**Extra Fine Chow Mein
\$1.35 Qt.**

Approximately enough for
3 to 4 persons

Egg Rolls—30c each

Call—Your complete meal
will be packed and ready
for you to take home.

Open Daily
11:30 to 10:30

Orders to Take Out
or Reservations,
Call MI 4-7576

IT'S BACK TO CAMPUS WEEK

One Week Only Sept. 6-13

AN UNUSUAL BACK TO SCHOOL
PRESENTATION FROM OUR
REGULAR NEW FALL STOCK

20% OFF ON

SUITS:

1 and 2 trouser suits of flannel, sharkskin and
doeskin gabardine

SPORT COATS:

Imported and domestic fabrics in checks, plaid,
herringbones, and solid colors

SLACKS:

Houndstooth checks and solid color flannels and
Pacific Mills gabardines

SPORT SHIRTS:

An outstanding assortment of small checks, large
plaids and solid color gabardines

DRESS SHIRTS:

Colored and white broadcloths and oxford cloths
in the most popular collar styles

REPP TIES:

Pure silk striped repp ties with the new square
ends. A perfect complement to the campus
wardrobe, \$2.00—REPP BOWS \$1.50

MORTIMER'S

MEN'S STYLE
CENTER

MI 4-6824

123 West Maple

Use Eccentric Classified Ads
For Best Results

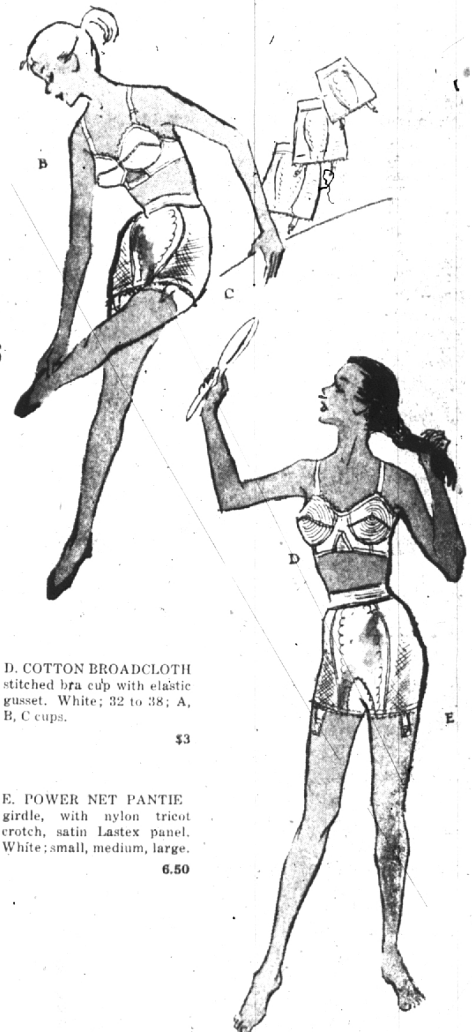
PARKING AREA FOR YOUR SHOPPING CONVENIENCE



PERMA-LIFT BRAS and GIRDLES

are under-cover control for a trim,
slim figure on or off-campus

The smoothest figures you'll see on campus will be
Perma-lift controlled . . . setting off the most
exciting silhouettes to best advantage. Plan
your back-to-campus foundation wardrobe now
. . . with practical, beautiful cotton bras, with
the Perma-lift magic insert; with hip-
controlling girdles and pantie girdles.



A. COTTON BROADCLOTH
white bra, with elastic band
in back. Sizes 32 to 38; A,
B, C cups. **2.50**

B. COTTON BROADCLOTH
Jr. white bra, with a narrow
band. Sizes 32 to 38; A and
B cups. **1.75**

C. THREE-LENGTH GIR-
DLE with waist control, a
satin Lastex panel. In white;
short, average or tall; small,
medium or large. **5.95**

D. COTTON BROADCLOTH
stitched bra cup with elastic
gusset. White; 32 to 38; A,
B, C cups. **\$3**

E. POWER NET PANTIE
girdle, with nylon tricot
crotch, satin Lastex panel.
White; small, medium, large. **6.50**

INTIMATE APPAREL PARKING LEVEL

Jacobson's

Maple at Bates Birmingham