

FIRST SHOWING IN BIRMINGHAM
NEW BAUSCH & LOMB
TELEVISION GLASSES

A NEW PICTURE MAGIC!
 NEW VIEWING COMFORT!

TELE-BAN SNAP-ON STYLES, TOO.

Special Selective Filters
 • Unbelievably Real Focus
 • Made For TV Viewing Only
 • Tested and Approved Lens

YOU'VE HEARD ABOUT THEM FOR WEEKS... and now you can get them for the first time in Birmingham at Norman R. Becker's! Months of research in developing a lens to reduce eye discomfort has resulted in amazing Tele-Ban glasses. You see a surprising new depth and detail in television... a sharply "solid look" in the picture! Try them!

Formerly associated with Sears and Roebuck, Detroit, in Optical Dept. as Manager and Optometrist

Norman R. Becker, O.D. And Staff

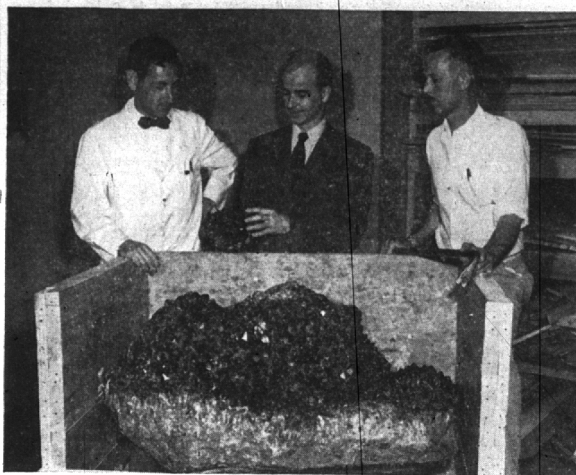
Complete Lens Grinding Shop on our Premises MI 4-0644

129 E. Maple

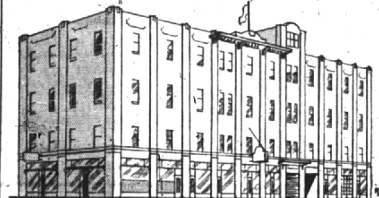
Member of 1951 Harvard University Football Team

Bob Hardy, 851 Hazelwood, is a member of this year's Harvard University football team. The former Birmingham High school grid captain and guard is trying out for quarterback on the Crimson squad. A sophomore, he is 5 feet 11 inches tall and weighs 165 lbs.

A total of 20 lettermen are returning from last year's Harvard team which won one game. Sophomores played a prominent role last fall, and now as juniors will together with a few seniors, form the nucleus of the 1951 eleven. Schedule is Sept. 22, Springfield; Sept. 29, Holy Cross; Oct. 6, at Columbia; Oct. 13, at Cornell; Oct. 20, Army; Oct. 27, Dartmouth; Nov. 10, Princeton; Nov. 17, Brown; and Nov. 24, at Yale.



BRAZILIAN AMETHYST crystals, now on display at the Cranbrook Institute of Science, are examined (from left) by James Carmel, Dr. Robert T. Hatt and Donald Tompkins. One cluster weighing 1,300 pounds not only is the largest mineralogical specimen in the museum, but one of the largest ever taken from Brazil, according to Dr. Hatt. It was formerly a part of the collection of the late William Boyce Thompson, New York banker. It was recently deeded to New York's American museum of natural history which presented it to Cranbrook.



You Are Cordially Invited to Inspect

OUR MODERN STORAGE
 Built Especially to Store Household Goods

LOCAL AND LONG DISTANCE MOVING

GAUKLER STORAGE CO.
 9 Orchard Lake Ave., Pontiac, Mich.
 Dial "O" ask for Enterprize 6305

Birmingham Kiwanis To Sponsor Fund Drive For Kids On Saturday

Annual Kids Day will be observed here Sept. 22 as nine Kiwanis teams solicit funds for underprivileged children with a street campaign.

Teams will be located throughout the business section for five hours, armed with canisters and Kids Day buttons.

Team captains are Clarence Choest and Bob Hoover; Tony D'Agostino and Ken Hoover; Bill Fryer and Jim Riley; Marvin Kauffman and Charles Savage; Sherman LaMeasure and George Souter; Nick Mitchell and Paul Stocker; Garland Tait and Tom Ward; Clifford Wright and Claude Whipple; Ed Wyman and William Thorburn.

The fund drive will be from 9 a.m. to 2 p.m.

Police Investigate Home Robbery; Two Suspects Released on Store Theft

Birmingham police are investigating two local burglaries, one involving the S. W. Brede home, 2057 Yorkshire, the other the D. J. Healy shop on West Maple.

Officers said a quantity of silverware, two suits and a clock were taken from the Brede home Sept. 6. Entry was made by forcing a screen door and smashing the French door.

Brede told officers he did not know the actual value of the items taken.

Meanwhile the officers continue their investigation of the Sept. 2 theft of \$100 from the Healy store.

Two persons were questioned and released after taking lie detector tests.

O'BRIEN'S 75 HOUSE PAINT
 TODAY'S GREATEST VALUE

\$5.85 Gal.

This year, buy the best and keep your home looking better longer. Get years of extra service with O'Brien's 75 House Paint. Made with patented Pre-Shrunk Oils, it can be used on any exterior surface. Easy to use - brushes on without "pull." Comes in many colors, White and Priming White.

HERE'S ELECTRICAL SERVICE THAT'S

prompt and efficient

PHONE MI 4-2200

HAWTHORNE

Walker-Crawford PAINT COMPANY
 714 S. WASHINGTON ROYAL OAK
 ACROSS FROM KROGER'S
 PHONE LI 1-4250
 OPEN FRIDAY and SATURDAY TILL 9

tastes like clove...
 smells like clove...

CLOVE CARNATION
Ayerfast Indelible
 by HARRIET HUBBARD AYER

Pays shining tribute to your lips as it flavors and freshens...and because it's creamy Ayerfast Indelible lipstick it stays...and stays.

Wear it with coordinated make-up and look even dreamier!
 1.25 plus tax

Wilson's
 WOODWARD AT MAPLE



The whole street brightens when the Visiting Nurse arrives. She brings much more than medical care and expert treatment to saddened homes.

In her step and her smile, there is assurance that no one is so forsaken that his fellows forget him. This is the whole community reaching out in neighborly kindness to help those who are sick and hurt.

The service could not exist except for the United Foundation Torch Drive. The drive is now going on. It combines 150 appeals in one. Your one gift helps all. Please give more generously than ever before when the volunteer solicitor calls on you. The need is so great.

150 CAMPAIGNS IN ONE - The United Foundation is a permanent non-profit corporation created to unite separate campaign appeals for health and community services into one annual drive. It includes the 128 United Community Services and 22 other health and service organizations.

Give once for all
 OCT. 16 TO NOV. 8
 Keep the torch burning

1951 **TORCH DRIVE**
 UNITED FOUNDATION OF METROPOLITAN DETROIT

THIS MESSAGE SPONSORED BY
THE BIRMINGHAM NATIONAL BANK
 MEMBER FEDERAL DEPOSIT INSURANCE CORPORATION
 MEMBER FEDERAL RESERVE SYSTEM

Wise Home Owners choose...

ACME
 Balanced Formula
HOUSE PAINT

Yes, for maximum protection against the elements—plus the glorious colors that make your house the envy of the neighborhood—choose ACME Balanced Formula House Paint!

Let us show it to you today—while we help you solve your painting problem! We'll convince you we deserve to be your headquarters for quality paint and dependable painting information. GAL.

the
McBRIDE HARDWARE
 COMPANY
 128 S. Woodward Open 8:00-6:00 MI 4-3010