

During the 1950-51 school year, Birmingham school buses traveled 64,125 miles taking youngsters to school and returning them to their homes. It meant the consumption of 9,750 gallons of gas at a cost of \$2,111.75.

**Call in the Morning...
SLEEP IN COMFORT
The Same Night**

Your Mattress or Box Spring
REBUILT
Just Like New!

Phone Now...
Pick Up & Delivery



or Dial O, ask operator for Enterprise 9310

OXFORD MATTRESS CO.

PHONE FE 2-7695 FOR ESTIMATES 40 E. PIKE ST. PONTIAC

Time To Buy **Nitey Nite**

The Only SHRINK-RESISTANT Sleeper

NITEY NITE sleepers are made of pure cotton fabric treated by a scientifically measured process and will not stretch nor shrink out of shape nor size. Double sole bootie foot. Sweater-cuff. Gay sudrast songbird colors.



- Two-Piece Style, sizes 00-0-1-2-3-4 . . . \$2.25
- Three-Piece Set (same style with extra pants) sizes 0-1-2-3-4 . . . 3.25
- One-Piece Style, sizes 4-5-6-7-8 . . . 2.50
- Nitey Nite Junior, a cuddly doll . . . 3.75
- Colors: Pink, Blue, Yellow, Green
- Pajama Style, sizes 4-6-8 . . . 2.50
- Colors: Blue, Yellow, Red, Green

LITTLE FOLKS SHOP

175 West Maple, Birmingham
There is only one "LITTLE FOLKS SHOP" in Birmingham

Birmingham store hours: 9:30 to 5:30

51
costume suits...
contoured in
wool, flashed
with brilliants



Misses, women and petites... everyone can wear a costume suit! Versatile dresses with matching jackets that go smoothly through city life, look like a "million"—cost a lot less.

a. Button-high jacket with nip waist, standout hip; circular yoke detail on dress bodice. Gray, purple, royal, wine. Misses' sizes 10 to 20.

\$35

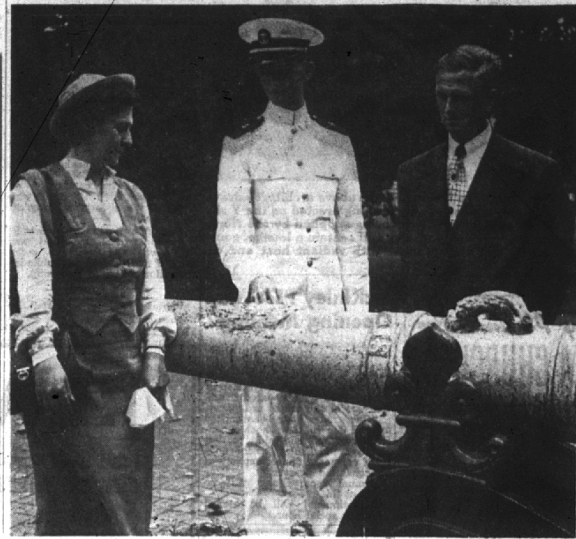
b. For misses 5'4" and under... smoking jacket lapels; deep-throated rayon crepe bodice on dress. Black, gray, wine, purple. Brief sizes 12 to 20.

\$29.95

c. Slim proportions in a gracious woman's style... rayon crepe bodice tabbed and rhinestone-dotted three times. Blue, wine, green, black. Half-sizes 14½ to 22½.

\$45

HIMELHOCH'S
DETROIT • BIRMINGHAM



MR. AND MRS. VERNON S. KEENER, 1196 Holland, and their son, Midshipman Fourth Class Delbert V. Keener, look at a Spanish cannon mounted within the grounds of the U.S. Naval academy, Annapolis, Md. The Keeners were among more than 600 families from throughout the country who visited the academy for the second annual "open house" over Labor Day weekend for parents of the new class of 1955. (Official U.S. Navy Photo)

To Distribute
Highway Funds

Birmingham will receive \$4,602.18 and Bloomfield Hills \$2,006.58 from motor vehicle highway funds, according to State Highway Commissioner Charles M. Ziegler. Total funds to be distributed to 83 counties and municipalities of the state and the State Highway department, after costs of collection have been deducted amount to \$6,203,408.78.

ACCORDING TO THE law, 44% of the total deposits of highway revenues during the period June 1 to June 30, amounting to \$2,729,429.86, will go to the highway department. Vouchers to the counties total 37% of the deposits, or \$2,295,261.25. Municipalities receive 19% of total deposits, which were \$1,178,647.67.

County funds are divided by law 75% for maintenance and construction of primary roads and 25% for maintenance and construction of local roads, after a fixed sum of \$5,000 per year per county has been allocated for engineering services.

CITY AND village funds are divided by law 70% for major streets and 30% for local streets. Ziegler stated that the first substantial increases in highway funds to counties and municipalities resulting from the increased gasoline tax, won't be apparent until the next distribution is made. Oakland County's share of the distribution is \$129,467.30.

YMCA Management Committee Meets Monday, Sept. 17

First fall meeting of the Birmingham YMCA Committee of Management will take place Monday, Sept. 17 in the "Y" offices at 144 West Maple Street at 8 p.m. Chairman Harold Kalbfleisch will take up the questions of the Fall Membership campaign and pro-

gram. Official recognition and acceptance of the plans for the new, temporary building on West Lincoln Avenue also will be discussed.

Well Washing Commercial Work
House Washing Free Estimates
Suburban Window Cleaners
ART ZETTEL MI 4-0160

SPECIAL--

FOR LIMITED TIME ONLY

Beautiful Luster Cream

COLD WAVE \$5.00

... Other Cold Waves \$10.00 up

... Machine & Machineless \$5.00 up

SPECIALIST IN HAIR TINTING

SARA'S BEAUTY SALON

266 E. Maple

MI 4-6440

September 13, 1951 THE BIRMINGHAM ECCENTRIC Page 5
Schafer Art Classes- Sept. 17. Enrollment is now being taken for junior high school groups who will meet after school hours Mondays; senior high school groups, Wednesdays and grade school groups Saturdays from 10 to 11:30 a.m. Private classes will be held Tuesdays and Thursdays. Photos must be submitted by noon each Friday to insure publication the following Thursday.

kay baum
99 W. MAPLE
BIRMINGHAM

Special Purchase!
all wool
Fall Suits
44.95
6 59.95
plus \$39.90

there's a whole season ahead to wear these important new silhouettes and colors. Slan Haberdines... Flannels shakerkins and checks.

Special Purchase
famous make
Cashmeres
reg. 14.95
to 22.95
short sleeve slip on \$8.99

Long Sleeve Slip on... 10.99 Cardigan... 12.99
Full fashioned, imported Cashmere in 8 glowing colors.
Sizes 36 to 40.