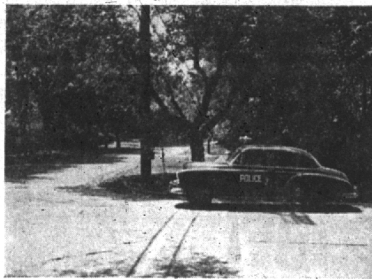


There are some people who delight in sending out malicious gossip about others. Some lack some element of security in their own lives, must be behind their wagging tongues. While one often cannot prevent such gossip, he can live so that it cannot harm his reputation.

DRIVING INSTRUCTIONS
and
DRIVER TRAINING
in New Dual-Control
1951 FORDS

Phone for full details
Another Special Service
by
Harold Turner, Inc.
Your Friendly Ford Dealer
622 S. Woodward Ave.
Birmingham, Mich.
MI 4-7560 Telephone JO 4-6262



CORNER RESIDENTS whose shrubbery is more than three feet high for a distance of 25 feet from intersections have been told to move it or reduce its height in accordance with a new city ordinance passed this summer. In this photo, a police car illustrates how Lincoln and Pierce motorists must block the crosswalk before being able to see clearly any approaching traffic . . .



ANOTHER HAZARD slated for early removal is shrubbery which obscures curves, such as this one on Shirley drive.

ANNOUNCING
LLOYD COOPER



as
salesman with
MIKE WELCH
Chrysler &
Plymouth
DEALER

Mr. Cooper will be happy to meet his many friends each evening and Saturdays at the salesroom
479 S. Woodward
During the day Mr. Cooper is with Chrysler Corporation in Detroit.

BERESFORD-THOMPSON
General Insurance
"We Insure Everything, But Yesterday"
EDWIN M. BERESFORD—OTIS C. THOMPSON
176 North Woodward Avenue
BIRMINGHAM PH. MI 4-8930

The F. J. Mulholland Co.



First Choice...
For Fit, For Comfort, For a Sweetheart of a Figure

Life Bra and Girdle

In Formfit's Life Bra alone . . . this new "Triple Fit" Proportioned to (1) your bust size, (2) your cup size, (3) your degree of separation—wide, medium or narrow. Result—a naturally lovelier bustline . . . with greater freedom and comfort! And only in a Life Girdle . . . Formfit's famous *tailored-in-control* that slims and smooths waist and hips—beautifully, comfortably. Working together, Life Bra and Life Girdle can give you a Sweetheart of a Figure all the way! See proof . . . let us fit you . . . today.

Life Girdle shown, in Nylon Taffeta, \$15.00
Other Life Girdles from \$ 8.95
Life Bras from \$ 1.25

Mulholland's

Not Too Many Kids— Just Too Little Room

By ALICE E. MORGAN

Birmingham's Halloween party is no longer a small "family" affair. To borrow a word from Hollywood, today's party is "colossal".

Instead of the few hundred who marched in that first parade, about 16 years ago, this year's line is expected to number more than 8,000. Instead of the 25 or 30 persons who served on committees about 500 will serve in various capacities in 1951.

Every angle of the party has been touched by the growth of the city.

Businessmen, who support the enterprise, are solicited for larger contributions and more prizes.

WORKERS ARE finding themselves faced with mountains of food and small oceans of cider. The scene around Hill school, where the food lines are set up, resembles a large hotel kitchen suddenly moved out of doors.

Convents, stacks of cups and napkins and dozens of bustling workers jam the whole area preparing the layout for the first hunger marcher to return.

Judges mill around among hundreds of youngsters making preliminary awards before hurrying to the stand by the Wabek building where final judging is done as the marchers pass by.

Enough prizes are stacked in the school, awaiting the winners, to stock a small store.

WHERE ONE band was sufficient for the marchers, more must be provided in order to assure the end of the line with music.

Entertainment committees are faced with too little space.

"We never have had, and never will have, too many kids," one member said, "but sometimes we don't have quite enough space."

To help relieve this situation, the senior high school party at the Community House will have a double program. The usual dance will be held in the auditorium, with music for square dancing in the Boy Scout room downstairs. The Ranch Room, as usual, will be open for the affair.

In line with these increases are those of the watchers.

COMMITTEE MEMBERS of that first party recall perhaps 800 persons standing along the streets to watch the parade. The crowd was estimated at more than 12,000 last year.

To meet these changes, additional workers are being recruited by this year's committee.

Service clubs and PTA groups are being asked to recruit more men to work on the food lines, both preparing and serving the sandwiches, doughnuts and cider.

They are asking members of these organizations to come to the aid of Boy Scouts in keeping spectators back of the curb as the marchers swing along Maple to complete the last lap of their journey.

Girl Scouts are being asked to serve with the prize committee chairman, Mrs. Donald D. Lennox in wrapping prizes. Members of Baldwin high school will solicit merchants for prizes. It was pointed out that these solicitors each will be accredited.

Photos must be submitted by noon each Friday to insure publication the following Thursday.

IN BIRMINGHAM
It's STERNAL'S
for
Whirlpool Washers

LIBERTY CLEANERS
for better
dry cleaning
PICK UP & DELIVERY
SERVICE
PHONES MI 4-0222
MI 4-9700
Homes At Honor By
We Own and Operate Our Own Plant

TYPEWRITERS
Repaired
NEW AND USED
SOLD • RENTED

ADDING MACHINES

Wedding Announcements

Original
CHRISTMAS CARDS

Forbes Printing Company
Corner
FRANK and ANN MI 4-2224

District Approved
The special assessment district for sewer and water services on Maryland boulevard has been approved by Birmingham commissioners. The 15 lots affected will be assessed \$155 per lot in one payment.

If you don't want it, someone else does—all it thru an Eccentric Classified Ad.

LANDSCAPING

Would you like your landscaping to be exciting and different?
Twenty-one years' experience as landscape architect, specializing in different garden problems.

No charge or obligation for complete landscape plans and detailed estimates

Phone: Doan R. Ogden — collect — Romeo 3541
Vice-President in charge of landscape design

PONTIAC NURSERY CO.
Romeo, Mich.

CHECK UP—
Tires — Battery — Brakes
TUNE UP—
For driving pleasure this fall!

GENERAL AUTO SERVICE
WOODWARD AT FOREST
MI 4-7934
Oliver Corwell
Erich (Dutch) Kurth
WE DO GENERAL REPAIRS


- UNITED MOTOR SERVICE
- AUTO-LITE SERVICE
- BENDIS BRAKE SERVICE

as seen in Vogue

Fashion takes Wings

a new idea in lingerie by **Artemis**

Lasting loveliness in lace and embroidery . . . brought to you by Artemis in lingerie of ethereal beauty.



a. The Butterfly Gown, flighty with butterflies—five embroidered medallions on the bodice and one on the skirt. Finest multifilament rayon crepe in pink, lilac or skyblue with white butterflies and lace. Sizes 32 to 40. \$5.95

b. Winged jacket, matching the gown to make a pretty ensemble. Embroidered butterfly medallions and yards of lace on finest multifilament rayon crepe in same colors as the gown. Sizes 32 to 40. \$3.95

c. You can actually wear half a dozen butterflies—embroidered medallions—on a richly lace enhanced slip of finest multifilament rayon crepe in white, pink or lilac with white lace and butterflies, 32 to 40; white only, 32S to 36S. \$3.95

d. Lace vies with embroidery to make this one of the prettiest bodices ever. Ruffled lace on the lace edged skirt. Pink, yellow, skyblue or white slip in finest multifilament rayon crepe. 32 to 40; white only 32S to 36S. \$3.95

e. Luxurious, little rosebuds embroidered on nylon sheer to trim a lacy slip of finest multifilament rayon crepe. Wide, lace trimmed flounce of nylon net. Pink, white or skyblue with matching rosebuds and white lace. 32 to 40. \$4.95

F. J. Mulholland COMPANY