

# Church Completes Hazardous Journey

By ALICE E. MORGAN

After meeting and overcoming several difficulties, the Birmingham Church of the Nazarene finally reached its new location at Lincoln and Edgewood Saturday.

The size and weight of the building was the first obstacle, and held up the moving for several

weeks while street surfaces were tested and the proper route planned.

the Birmingham Business Women's Association.

Since their marriage the couple has been out of theatre circles while getting settled into their new home, but "Goodbye, My Fancy" marks their return to hard work at a hobby which both of them enjoy.

Wednesday morning the actual moving of the 56-year-old building got underway when it was loaded onto the huge movers' dollies.

Only a short distance from the original site at Woodward and Forest, the weight of the building sheared off several wheel lugs and caused delays. Traffic on Woodward was slowed because the size of the building took up most of the street.

BIRMINGHAM police were assisted by state police and members of the sheriff's department in handling traffic on 14 Mile where the church began its journey westward.

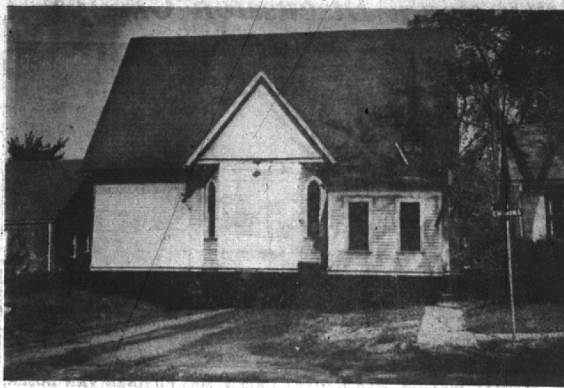
Here mail boxes had to be uprooted until the slow moving trucks had passed.

Once on Grant street, the soft shoulders hampered the progress when dolly wheels sank, hub-deep. Only a few feet separated the church from the houses on the street in most places.

City foresters cut down five trees and removed eight others for re-planting to permit passage of the church.

Detroit Edison crews cut and removed circuits at nine locations. They also removed four street lights and six traffic signals. In addition, 40 wires were raised to permit passage of the steeple.

SIX POLES, 50 feet long, were lashed to existing poles to bring wires high enough to clear the top of the building and one 80 foot pole was set. At Greenfield and 14 Mile a 24,000-volt circuit had



NAZARENE CHURCH SPANS GRANT ST. ON WAY TO NEW SITE Building clears houses by only a few feet (Joe Wheeler photo)

to be temporarily shut off so the line could be raised without injury to workers.

After an over-night stop on Grant, the church resumed its journey Thursday. An extra Diesel

truck was brought in to ease the wheels out of the clinging mud, and again the game of twist and dodge went on.

Barring delays while trees and poles were moved, the church continued without mishap and entered the St. James park, shortcut to its own new foundation.

The building remained in the park Thursday night and work went on Friday and Saturday of

shaking it from the dolly to the already-prepared foundation.

ACCORDING to the Rev. William Ardrey, church pastor, this was the most interesting part of the project and was seen by the least people.

"It went along smoothly," he said, "and the way those men did it, very simply."

"Big skids, about four or five inches square, were laid across the basement opening and were pretty well soaped. When it came time to move the church the men wet the soap, hooked onto the church with two trucks and slid it into place without a hitch."

"The building was jacked a little higher than the foundation to permit the final brick work and we hope to resume services in the building the first Sunday in November."

"THE ONLY damage was a small piece of plaster, about a foot square, which fell. That was a patch, in the first place, and of no consequence. A few hair-line cracks appeared as we were moving but have all closed now."

He added that the interior of the church will be redecorated after new piping has been installed and new concrete steps placed at the front entrance.



GERTRUDE ROGERSON

## Birmingham Couple Shares Spotlight In Kanin Comedy

Mr. and Mrs. Forrest Fox (Gertrude Rogerson) have leading roles in the Robert F. Hampton production of Fay Kanin's comedy hit "Goodbye, My Fancy" which the Military Order Of The Purple Heart will present at the Detroit Institute of Arts on October 12 and 13.

Gertrude, active in community theatre in and around Detroit for many years, has been seen in such productions as "Ring, Around Elizabeth", "First Lady", "Stage Door", "Death Takes A Holiday" and "The Philadelphia Story".

The couple lives at 283 East Lincoln, Birmingham. Recently Mrs. Fox was elected president of

## Named to Committee Of Nat'l Organization

Verne D. Hanna, 2234 Avon lane, a member of the Detroit chapter of the National Association of Cost Accountants, has been appointed to the committee on public relations of the NACA for the 1951-52 year.

Hanna was recently elected to serve a 2-year term as National Director of the NACA at their annual meeting held this summer in Chicago. A member of the local chapter for 16 years, he has served on the board of directors since 1939 and is also a past president of the Detroit chapter.

Hanna is assistant treasurer of the Calumet & Hecla Consolidated Copper Co.

## Action Postponed

Action on vacation of easements on the recently sold city lots in Sheffield Estates, bounded by Eton, Sheffield and Melton, has been postponed for two weeks by city commissioners until the plan is completed.

Davidson's Woodward Ave. Birmingham



# To Be Smartly Suited

## YOUNG AND SPIRITED SEASON-AIRE SUITS

More-for-your-money values in suits to bridge the season smartly, to choose for campus or career. The famous Season-Aire label graces an exclusive Davidson collection: flannel, plain and patterned worsteds, fine suitings in crease-resistant rayon, nylon, and other man-made fibres. All are beautifully detailed, expensively tailored... yet well within budget prices at \$29.95 to \$39.95.

Sketched: grey rayon flannel with bright taffeta jacket-lining and petticoat .....\$36.50

The New **Davidson's** WOODWARD AVENUE BIRMINGHAM

## A SUIT COLLECTION THAT IS UNSURPASSED

Here are the suits of Autumn, hand-picked for you who know good fashion... who insist upon fine quality. Two silhouettes predominate. There is the suit with slender skirt and deftly moulded, longer jacket; there is the bell-waisted style with skirt flared more than you expect. See our many variations, beautifully executed in fine wools; a value-plus collection for misses, juniors, and half-sizes, priced from \$49.95 to \$150.

Sketched: well-mannered suit with checked worsted jacket above a full black skirt.....\$125.

The New **Davidson's** WOODWARD AVENUE BIRMINGHAM

Davidson's Woodward Ave. Birmingham



Davidson's Woodward Ave. Birmingham

Store Hours Daily 9:30 to 5:30 FREE PARKING



## Suit-able

BRIGHT SILKEN SQUARES, gray little scarfs to show above your suit-collar... to knot casually at your throat. Collect them in solid colors, as illustrated, or in neat geometric prints, or color-splashed hand-blocked patterns.....\$1.00

From a Collection, \$1.00 to \$12.50

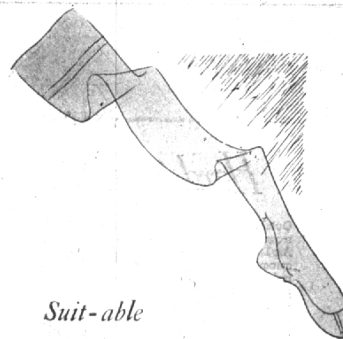
THE **Davidson's** WOODWARD AVENUE BIRMINGHAM

## Suit-able

THE NEAT BOX BAG, shaped in fine Botany wool, with hinged top that opens to reveal a set-in vanity mirror. From an exciting collection of bag-fashions offered in rich fabrics, polished calfskin or soft suede...Style sketched is \$7.95\*

From a Collection \$5.00 to \$50\* \*Plus Taxes

THE **Davidson's** WOODWARD AVENUE BIRMINGHAM



## Suit-able

51-15 NYLON HOSIERY, the stockings you prize for their sheer beauty. These are all first quality hose, in a tempting range of Fall colors. Buy for yourself and for Christmas giving at this featured price!

Only \$1.00 pr.

THE **Davidson's** WOODWARD AVENUE BIRMINGHAM