



... and send them for LIBERTY for ONE DAY SERVICE!

Your drapes, bedspreads, blankets... they all receive meticulous care when entrusted to our cleaning experts. We send them back to you looking fresher and newer.

Our service is very rapid, but your prized possessions are always treated carefully. Call now for PICK-UP and DELIVERY.

HOURS: 7:00 a.m. to 6:30 p.m.

**LIBERTY CLEANERS**

Haynes at Hunter MI 4-0222-4-9700  
Serving Birmingham and Vicinity Since 1930

**"Moonglow" and "Chaos"**

(of French Descent)

WILL BE ON HAND TO

PERSONALLY GREET YOU

AT THE

**CHRISTMAS PREVUE**

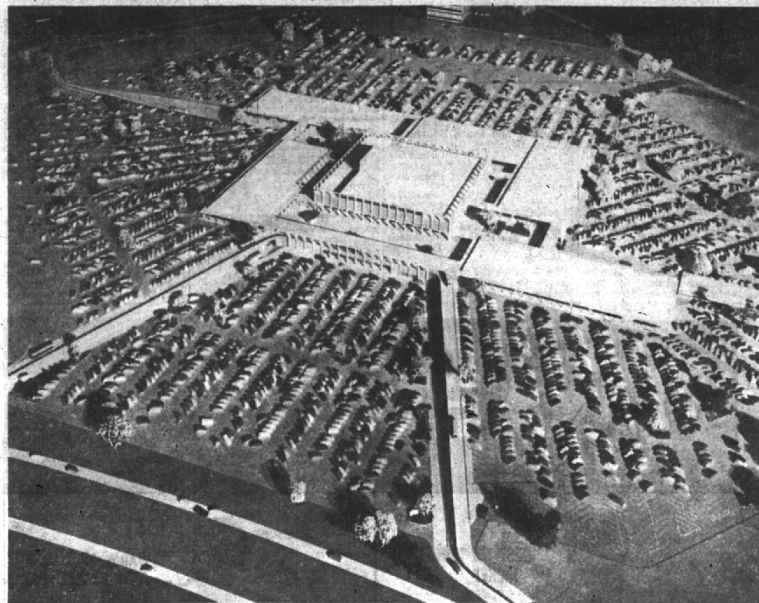
MONDAY, DECEMBER 3rd  
7:00 p.m. to 9:00 p.m.

YOU ARE MOST CORDIALLY INVITED TO

**McCLELLAN-BALL CO.**

YARD SUPPLIES FARM KENNEL  
BIRMINGHAM, MICHIGAN  
Phone MI 4-4133 159 Brownell St.

Use Eccentric Classified Ads For Best Results



THE PROPOSED J. L. HUDSON "Northland Regional Shopping Center" is shown in the above photograph of a model of the development. This site in Southfield township, will be bounded on the south by Eight Mile, east by Greenfield, north near Nine Mile, and on the west by Northwestern. Surrounding the center will be a parking lot with space for 800 cars.

The firm is now seeking permission from township authorities to rezone the area. The zoning board has recommended the change and the matter will be considered by the township board within the next 30 days.

**Kingswood Field Hockey Squads Undefeated**

Both first and second varsity hockey teams at Kingswood have been undefeated this year. The first team holds the Constance M. K. Applebee plate together with

Grosse Pointe Convent, whom it tied and the second team keeps possession of the Stuart cup for another year.

In the first games of the season, Dominican High bowled 2 to 0 to the Bloomfield Hills school first team and 3 to 0 to the second squad. Liggett was the next victim, routed by the Kingswood first team by a score of 5 to 0 and the second team 6 to 1.

WHEN KINGSWOOD PLAYED

**CLYDE H. COLLINS**

Insurance

- FIRE ● AUTOMOBILE
- DOCTOR CALLS ● HOSPITALIZATION
- LIABILITY ● MORTGAGES

164 W. Maple

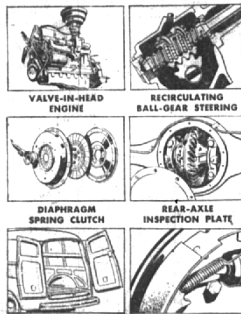
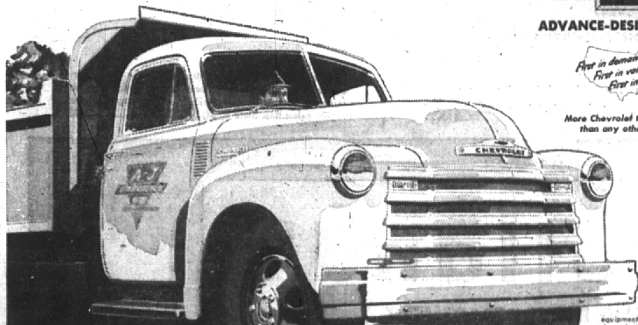
MI 4-4004

**lower maintenance costs**  
*engineered in!*

...to do more work for your money!

Chevrolet's great *engineered-in* features keep maintenance costs at rock bottom. The famous 105-h.p. Loadmaster engine is built for the hard and long pulls. Chevrolet's heavy-duty frame, sturdy transmission, durable rear axle and other great

Advance-Design features keep upkeep down. Come in and look over the great line of Chevrolet Advance-Design trucks first chance you get. They'll do more work for your money because lower maintenance costs are engineered in.



ADVANCE-DESIGN TRUCKS

First in durability. First in value. First in sales.

More Chevrolet trucks in use than any other make!

(Continuation of standard equipment and trim illustrated is dependent on availability of material.)

**THE NORTH CHEVROLET COMPANY**

1000 So. Woodward Ave.

Phone MI 4-2735

**Radio Amateur New Member of Century Club**

WEST HARTFORD, Conn.—Philip H. Smith, 1756 Yosemite, Birmingham, Mich., has been awarded membership in the DX Century club, exclusive society of

amateur radio operators who have made two-way short-wave radio contacts with at least 100 of the more than 200 countries of the world.

Smith's is the 411th amateur station to achieve the 100-country contacts since the war. The station, set up in his home, uses the federally-assigned call letters W8HUD.

All contacts were made using radiotelephony.

*These GIFTS for Joyous Giving*

IDEAL SELECTIONS FOR PLEASING THE HOUSEHOLD



The Screen Everybody Wants



The New CRESCENT... LIGHTS

POLISHED BRASS AUTOMATIC FIREFIGHTERS

ALSO: FOR THE FIREPLACE ● ANDIRONS ● FIRE SETS ● GRATES

*the* **McBRIDE HARDWARE COMPANY**

Birmingham's Largest Hardware

128 S. Woodward Open 8:00-6:00 MI 4-3010

Want ads cannot be accepted after 5 p.m. each Tuesday.

General news headline is 4:30 p.m. each Tuesday.

**HEARING AIDS**

BATTERIES for ALL MAKES

Make Inquiry at Our Store and Get All of the Details

**SHAIN'S**  
DRUG STORE  
105 W. Maple

**Here's what Michigan doctors prescribe to ease the cost of illness!**

They prescribe BLUE CROSS - BLUE SHIELD

to protect your family against the costs of hospital and surgical care!

These health-care plans, developed by Michigan hospitals and doctors, are known, respected and welcomed in every part of Michigan!

NEARLY 2½ MILLION MEMBERS MEANS GREATER BENEFITS—MORE SECURITY!

● The last to recover from an accident or illness in your family is always your pocketbook! That's why it, too, deserves expert medical help. That's why it gets this kind of help from Michigan hospitals and doctors who pooled their intimate knowledge of your problems to set up and direct the Blue Cross - Blue Shield health-care plans.

All this simply means that BLUE CROSS - BLUE SHIELD are known and accepted in every part of Michigan. A great advantage in times of emergency... a great advantage at any time because it means you can get into and out of a hospital without annoying red tape, without the need for filing any claims. BLUE CROSS - BLUE SHIELD pay hospital and doctor directly.

Benefits as high as \$8,058 have been provided!

BLUE CROSS - BLUE SHIELD have provided hospital and surgical benefits totaling as much as \$8,058 in a single hospital stay. There are hundreds of cases on record in which benefits have amounted to \$2,000 or more.

MICHIGAN BLUE CROSS - BLUE SHIELD have paid out more than 211 million dollars in health-care benefits in the past two years. This fact alone is striking evidence of the service rendered by these great plans.

Blue Cross-Blue Shield have millions of friends!

BLUE CROSS - BLUE SHIELD also offer advantages that money cannot buy. For one thing, they are Michigan Hospitals' and Doctors' own health-care plans. And there are over 2,400,000 BLUE CROSS - BLUE SHIELD members in the State of Michigan.

Here's What These Plans Do!

Blue Cross Comprehensive Group Hospital Plan covers up to 120 days of hospital care in ward or semi-private room, according to the service for which you enroll. Unlike plans that pay fixed amounts for hospital care, this plan covers hospital bills IN FULL for a wide range of certificate benefits when you are admitted to a BLUE CROSS participating hospital. No cash limit for drugs, for operating room, for anesthesia, and for many other hospital services.

Blue Shield Medical-Surgical Plan pays generous stated amounts to your doctor for more than 480 medical-surgical procedures. And it pays towards your doctor's visits to the hospital in non-surgical cases.

Chances are 1 out of 4 that your family will be faced with hospital and medical bills this coming year. And with today's hospital and surgical bills often running into thousands of dollars, it's easy to see how the protection these plans provide is worth many times the little you pay.

Michigan Doctors' and Hospitals' Own Health-Care Plans for the Public Welfare

**BLUE CROSS BLUE SHIELD**

Michigan Hospital Service Michigan Medical Service

234 STATE STREET, DETROIT 26, MICH.

PROTECTION THAT'S PRICELESS

