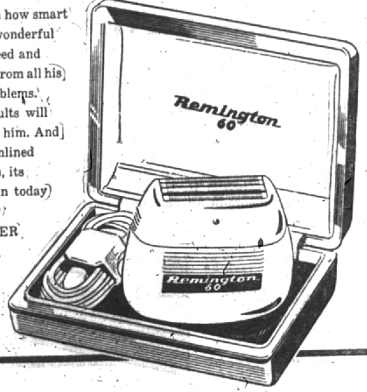


You know he wants one!

THE ALL NEW
REMINGTON 60

He'll never stop telling you how smart you were to give him the wonderful new Remington 60. Its speed and convenience will free him from all his old-fashioned shaving problems. Its close, comfortable results will spell shaving pleasure for him. And he'll be proud of its streamlined design, its beautiful colors, its good-looking case. Drop in today and see this amazing new SIXTY SECOND SHAVER... and hundreds of other beautiful gifts for every member of your family!



SHAIN'S
DRUG STORE
Prescription Specialists for 45 Years
105 W. MAPLE MI 4-2121



14 Mi-Pierce Stop Light Still Asked By School Board

Mrs. Chris Sloman, safety chairman for Pierce school PTA, was assured by Birmingham school board members last week that they would continue their efforts to secure a proper crossing guard or signal at the 14 Mile-Pierce intersection.

The board said they would request from Southfield township officials, who have expressed their willingness to cooperate on a share-the-expense basis.

County highway officials have told the school board and Mrs. Sloman that they do not feel there is enough traffic over that section to warrant the installation.

The board said they would reopen the discussion with the township and county, as well as the City of Birmingham, as soon as a financial agreement could not be reached and the light installed without delay.

Walnut Lake School Given Safety Cup

Safety patrols and teachers at Walnut Lake school were honored Tuesday when the school received the Automobile Club of Michigan Traveling Safety Cup award.

Selected from 2,113 Michigan elementary schools for the honor, Walnut Lake school is one of 85 to receive a cup this year.

The cup was awarded for an effective safety education program and excellent safety patrol corner guarding. The award was initiated 26 years ago to give recognition for outstanding contributions to child safety.

The cup was presented by the Automobile Club's Safety Patrol Supervisor Floyd Webb.

Legion to Complete Plans To Purchase Score Board

Final plans for the purchase of an electric score board for the new high school athletic field will be discussed at the Nov. 30 meeting of the American Legion, Charles Edwards Post.

The group will also plan the annual Christmas party given each year at the Legion home on South Woodward.

Preliminary plans are to be made for the mobile blood bank which the Legion will sponsor in Birmingham on Jan. 31 and Feb. 1, 1962.

Annual Concert Dec. 11

Final rehearsals are being held by the Birmingham Male chorus for its annual December concert. The group will be heard at the Community House on Tuesday, Dec. 11, under the direction of Otto Brown, Ferndale music instructor.

Public Pressure Inflation Curb, Audience Told

Public opinion, public pressure on state and federal officers, and a soft-but-curb on buying three of the greatest weapons against inflation, an overflow audience of more than 600 Birmingham residents was told Tuesday evening at the League of Women Voters sponsored "Town Meeting" held at the Community House.

Led by G. D. Andrews, Dearborn Motors vice president, the meeting highlighted state and federal laws, from the Lindbergh law to Michigan's hunting ban and the recent oleo controversy, which have been brought about by public opinion and pressure.

Panel members Fred Beckman, farmer, Rodney Lockwood, builder; Gordon S. Lamphere, banker; Andrew S. McFarlane, AFL leader; John Sagan, economist and Dr. Morgan Thomas, political science instructor, presented the views held by their groups. The group moderator was Alan Joslyn, local attorney.

THOMAS TOLD his listeners that an aroused citizen interest, such as was created by the meeting, would work strongly against inflation. He said that the public could clarify issues and through a better understanding help bring about an adequate solution.

Thomas also said he felt sharply increased taxes and greater government control was probably the best answer. Questioned as to the chances of more government control raising government wages and expenses, Dr. Thomas said this could be eliminated by distanding many governmental services now in existence.

Sagan blamed inflation on "too much money and not enough goods." He showed the rising spiral of prices from the opening of World War II, to its conclusion and the price plateau which existed between that time and the outbreak of hostilities in Korea.

"CUT MERCHANDISE consumption, voluntarily," he said. "It is, as far as I can see, the only way."

His opinion was borne out by other panel members including Lamphere, who explained that credit controls had become necessary as a curb to buying.

"Banks, insurance companies and other forms of loaners, have seen that too much money causes over-demand. Depleted, or nearly depleted stocks, spiral prices and bring about inflation," he said.

"Hoarding," or quantity buying was also cited as a parent to inflation. Buy only what you need, refuse out-of-reason prices, and live within one's income were other steps suggested for the solution of inflationary tendencies.

"Each person is responsible and only the discipline of society as a whole can work it."

"LEARN ABOUT inflation, think about inflation and talk about its curtailment. Bring personal or group pressure to bear on your state and federal representatives. They are your employees in the capitol and must yield to popular demand."

Transcripts of this meeting and all previous publicity, including pamphlets, will be prepared by the League and presented to Lansing and Washington legislators.

George A. Benders, national representative from the 17th District, and Howard R. Estes, 3rd District state representative, were in the audience.

Call Midwest 4-1100 to place an Eccentric Classified Ad.

Bond Issue

(Continued from Page One)

by the center of Nine Mile; and on the west by Inkster road.

Precinct two will be at the John Grace school, Emmett and Indian. This area is bounded on the north by the center of Nine Mile; the east by the center of Lahser; the south by Eight Mile road; and on the west by Inkster road.

LATHRUP SCHOOL, Southfield between 11 and 12 Mile roads, is headquarters for precinct three. This area is bounded on the north by the township school district boundary; on the east by Greenfield; the south by the center of 10 Mile road; and on the west by the center of Lahser.

Precinct four is at the Grace school, Midway and Evergreen. This district is bounded on the north by the center of 10 Mile; the east by the school district boundary; on the south by Eight Mile; and on the west by the center of Lahser road.

Tracy

(Continued from Page One)

DETROIT TIMES writer George Maskin said of Tracy, "A unanimous choice of everybody! The whole show at Birmingham most of the time. Piled up 154 points on 22 touchdowns and 22 extra points. Passed, ran, kicked, blocked and tackled. The dream player."

The 154 points tallied by Tracy placed him first in the state in scoring.

Cited on the Times All-Suburban second team was Birmingham junior tackle Tom Rickelman. Tracy, Rickelman and Gordon

Plan Council Chairman

E. E. Schaffer, 18220 Dunblaine, Beverly Hills, has been elected new chairman of the South Oakland Planning council. Schaffer is also chairman of the Southfield township zoning board and board of appeals.

Entertainment and Dancing
4 Nights Weekly
Wednesday thru Saturday
MARVE AND ELENORA
Song Stylists
Continuing another successful Engagement at

Henry's Bloomfield Inn
Oakland County's Smartest
SUPPER CLUB

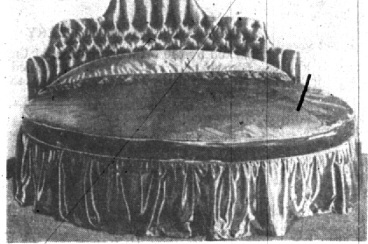
SHOWS NIGHTLY
THE PETE FLORE TRIO
FOR YOUR DANCING PLEASURE
DINNERS SERVED FROM 4 P.M.
1420 S. Telegraph Rd. For Reservations
at Orchard Lake Rd. Phone Federal 5-8060
Open 4 P.M. to 2 A.M. Daily Closed Sundays

A ROYAL BED!

AN UNUSUAL BED!

A CIRCULAR BED!

7 Ft. in Diameter—Custom Made
By Royal To Be Fit For A King



Headboard deeply tufted in beautiful satin
Innerspring or Foam Rubber Mattress

BUY DIRECT FROM FACTORY AND SAVE 1/3

- Mattress and Box Springs made to your order. Extra length or extra width—Choice of ticking.
- Stop in and see the largest selection of Hollywood Beds in Oakland County.

ROYAL MATTRESS & UPHOLSTERING FACTORY

22320 WOODWARD AVE. BIRMINGHAM
LI. 1-5788 LI. 2-4000 JO. 4-6398
No interzone charge
Dial O and ask for
Enterprise 6319
OPEN THURSDAY, FRIDAY AND SATURDAY 8 A.M. TO 9 P.M.

Make this a Musical Christmas!



It's the TOWN'S TOP VALUE!
GRINNELL 17" TV

Shout "Merry Christmas" to the whole family with this splendid Grinnell television console! And all year 'round, for years to come, your gift will keep on giving them joy each time they click on the switch! Dollar-for-dollar, it's the town's top TV value, offering a "family-size" 17-inch screen, performance that's superior in every way, and an all-wood cabinet of handsome mahogany veneers. Make it yours on easy, budget payments!

28995

EASY BUDGET TERMS

our "OWN MAKE" 5-octave piano
the **GRINNELL Jr.**

Small in size, but big in performance! The 5-octave keyboard of the Grinnell Jr. is adequate for all but the most advanced music... and it's Grinnell-made through and through, with the rich tone and every other outstanding feature that has made the Grinnell the choice of discriminating players since 1902! Perfect for small homes, apartments, recreation rooms or children's rooms!

\$450

EASY TERMS



GRINNELL 3-SPEED PHONOGRAPH

For the record collectors on your Christmas list! Here's a portable electric phonograph that plays all three speeds of records, has tone and volume controls, and comes in a compact, easy-to-carry case. Easy on the budget, too!

2495

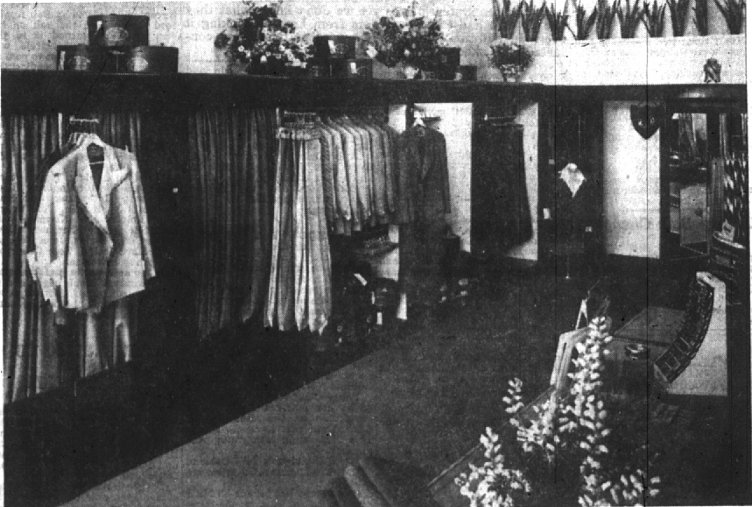


Give Grinnell Gift Certificates!

Grinnell's

115 S. WOODWARD

IT'S CHRISTMAS TIME AT MATTHEWS... GIFTS FOR THE MAN



Ladies' and Men's CUSTOM TAILORING
Bench Made Clothes With Fine Hand Detail
FURRIERS IN BIRMINGHAM AT TAILORS
288 E. Maple At Free Parking
Briggs Bldg. At Rear Of Store
Matthew's
OPEN DAILY FROM 8 TO 6, THURSDAY AND FRIDAY 8 TO 9