

Camera Clubs Unite For Shooting Spree

Members of the Bloomfield Hills and Motor City camera clubs will be co-hosts at a June 14 meeting to the Greater Detroit camera club council. The affair will be held in the Cranbrook school gymnasium at 8 p.m. and is open to the public.

Models for "chesscake" photography will be provided by Reason Chung of the Motor City club. The affair will be in charge of Gregor Affleck of the Bloomfield group.

The photographic competition will have prizes for both models and photographers. Judges will be Jean Etwall, Edith Zoviler and Isadore Berger, Roy Kindahl, president of the Bloomfield club, will make awards.

Local Men Elected Vice-Presidents Of Ross Roy, Inc.

Election of John L. Thornhill and William W. Shaul, both of Birmingham, as vice-presidents of Ross Roy, Inc., advertising agency was announced this week by Ross Roy, president of the firm.

Thornhill, who resides at 1211 Stanley, is account executive on the Dodge "Job-rated" truck account. He will continue in that capacity handling a major portion of the contact with factory executives, dealers, and sales personnel throughout the country.

Shaul, of 1823 Stanley, recently was named copy chief for all sales, service, and industrial training materials produced by the agency.

Eccentric Classifieds Bring Results!



Amos F. Gregory Seeks 2nd Term On School Board

Amos F. Gregory, 1216 Dorchester, is seeking his third term on the Birmingham board of education. A member since 1944, he has served as board secretary since July 1, 1947.

The candidate has been trustee and secretary of the Kresge Foundation since 1924, and received a bachelor of science degree from Pennsylvania State College.

GREGORY HAS TWO sons who graduated from Baldwin high school and a daughter who is graduating this June from there. He moved to Birmingham in 1934 and has been active in scouting since 1936.

In his campaign statement, he said, "In these days of confusion and uncertainty, it is vitally important in my opinion, to see that our traditional free-American system of education is maintained, preserved and improved. If I continue as a member of the board of education, I shall use my best judgment and effort to that end."

"One of the chief responsibilities of a board member in attaining this general objective is the selection of a superintendent and staff,

the assignment of responsibility to them and the appraisal of the results they secure."

HE ADDED, "I have confidence in the leadership of our schools and am very proud of the position of excellence to which our teaching staff has developed the educational program in the school district of the city of Birmingham."

"I intend to continue to support our educational leaders in all of the sound and constructive recommendations they make. I also expect to hold them to account, to scrutinize their decisions carefully, and to cooperate with them in revising or modifying their plans when indicated."

He further stated, "With this major responsibility constantly in mind, we must recognize that we face such important problems as providing adequate school buildings and adequate, competent, fair treated teachers and maintenance staff as well as sensible revisions of curricula and school organization."

"I BELIEVE in a teaching staff sufficient in numbers to have relatively small classes, with teachers selected on the basis of ability and promoted on the basis of high standards of performance."

Gregory concluded, "During my seven years as a member of the board I have endeavored to be consistent with the policies set forth in this statement."

"If I am re-elected, I will do my best to exercise good business and educational judgment as a representative of all the people in meeting the problems of the board as they arise and in planning for a great future for the school district of the city of Birmingham."

Some one, undoubtedly is looking for those items stored in your attic—make the sale thru an Eccentric Want Ad.

Detroit Title Expert Addresses Realtors

Louis H. Charbonneau, Detroit attorney and title expert, told members of the Birmingham Real Estate board of the technicalities of purchase agreements used by realtors. He stressed a better understanding between salesmen and their employers on all contracts.

The meeting, held Thursday at the Birmingham country club, was attended by 40 local real estate men. The next meeting is slated for June 21.

Interested? We Pay For Doctor's Call At Office or Home. CLYDE H. COLLINS Insurance Phone MI 4-4004

Lawrence E. Smith Landscape Design and Construction 135 N. Woodward in the Wilson Building Phone MI 4-2036

DOOM for DANDELIONS



Just scatter *Scott's* weed control over your lawn by hand or with a *Spreader*. The pesky broad-leaved weeds go, grass is not harmed.

WEED & FEED — double action in one operation. Kills weeds and at the same time feeds the grass to thicker growth and richer color. Box treats 2500 sq ft — \$2.95

NO Easy control for broad-leaved weeds. Same potent element as Weed & Feed less lawn food. Dry applied as it comes from package — no mixing or fussing with water. Box, 2500 sq ft — \$1.75 Bag, 11,000 sq ft — \$4.85

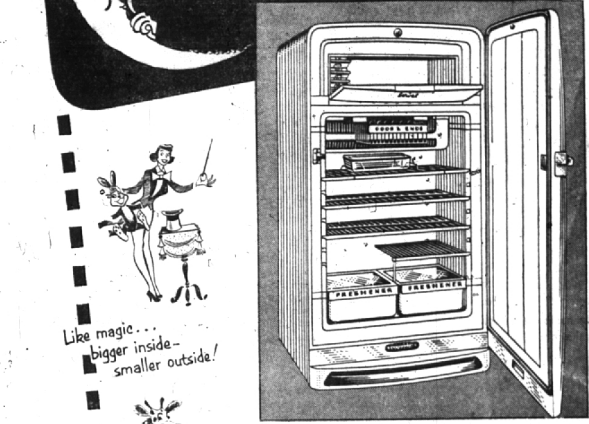
Saw SPECIAL PURPOSE BLEND Fast growing Scott's seed to fill in bare spots left by vanquished weeds. Excellent for late spring plantings. Box — \$1.25

Maskill Hardware
4400 Woodward
Just a Few Blocks South of 14 Mile Rd.

HOURS:
Daily: 9 A.M. to 6 P.M.
Sun: 10 A.M. to 2 P.M.
Closed Wednesday

Lincoln 2-4700
Ample Parking Space Available

Here's ALL THAT'S NEW! ...and silence too!



Like magic... bigger inside—smaller outside!

More useful space in less floor area—that's just the start of Servel's new conveniences. There's a big clear-across Freezer Compartment, too, with plenty of room for frozen foods, ice cubes.

New roomier Food Compartment! There's even a new "Odds and Ends" Tray to hold small bottles, baby foods, Quick-Change Shelves adjust to hold a giant turkey, a watermelon.

Twin Dew-Action Vegetable Fresheners roll in and out, keep salads garden crisp. See-through glass tops, too. You get all that's new—plus Servel's silent, long-lasting freezing system!

World's longest guarantee—10 years!

COMPARE BOTH TYPES... YOU'LL CHOOSE

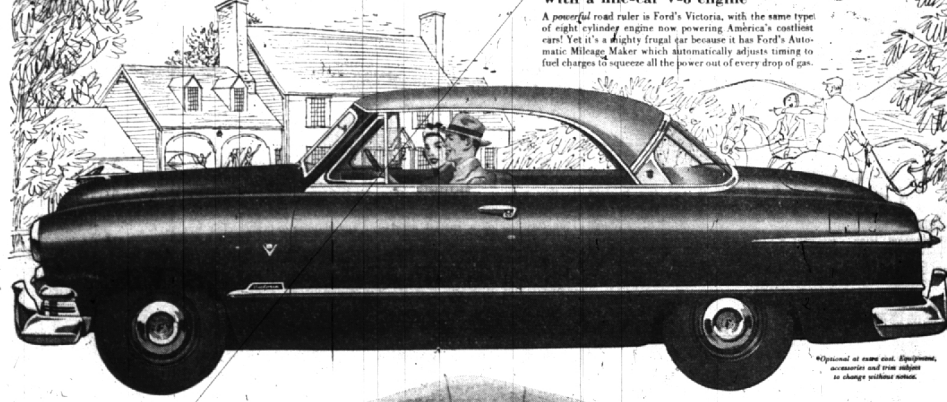
Servel
The GAS Refrigerator

PRICES AS LOW AS
\$239.95
BIG REPLACEMENT ALLOWANCE

Come see the demonstration—free from heat at your dealer's!

CONSUMERS POWER CO.

IT'S A Futureful, beautiful car



SEE IT TODAY!

A glance will tell you that no car—at any price—can equal the beauty of this new Ford Victoria. Throughout the last few years, Ford styling engineers have spared no trouble or expense to make certain that every line has perfect symmetry... each detail is in perfect balance... and all colors are in perfect harmony!

But come in and "Test Drive" this Ford Victoria... you'll find its beauty is more than skin deep. You'll feel the smooth riding magic of Ford's Automatic Ride Control. You'll learn the comfort of Ford's Automatic Posture Control. And you'll love Fordomatic,* the newest, smoothest, most flexible of the automatic drives.

With a fine-car V-8 engine

A powerful road ruler is Ford's Victoria, with the same type of eight cylinder engine now powering America's costliest cars! Yet it's a mighty frugal car because it has Ford's Automatic Mileage Maker which automatically adjusts timing to fuel charges to squeeze all the power out of every drop of gas.

For all its beauty, Ford's new Victoria is easy to own! When you see the custom tailoring of the Luxury Lounge Interior... with beautifully woven Fordcraft Fabrics, luxurious modern trim, and the new "Safety-Glow" Control Panel—all harmonizing with exterior colors—you'll agree you can't buy better at any price.

The new FORD Victoria

HAROLD TURNER, Inc.
TURN TO TURNER—YOUR FRIENDLY FORD DEALER

464 S. WOODWARD AVENUE
Phoness Midwest 4-7500 or JQ 4-624
* See our sparkling new television show—Ford Festival—starring James Melton with outstanding guest artists, NBC-TV network* Thursday, 8 p.m. WWJ-TV.