

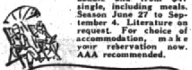
**Police Seek Young Men As Patrolmen**

Applications are again sought for patrolmen on the Birmingham police force.  
Police Chief Ralph W. Moxley said young men should be not over 30 years of age, five feet nine inches tall, weigh 165 pounds and be a high school graduate.  
Applications are being received at police headquarters until further notice.



**GOBERICH, ONTARIO**

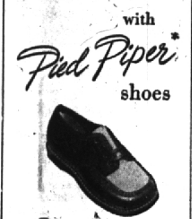
Come to Canada—to Goderich, on Lake Huron, in the historic Huron country where you will enjoy a perfect holiday at the Sunset Hotel. Beautiful scenery, refreshing lake breezes—golf, tennis, swimming—all summer activities. It is near and easy to reach—on the Blue Water Highway—only 3 hours from Detroit via Port Huron. Weekly rates from \$30 each double and from \$47 single, including meals. Season June 1 to September 4. Literature on request. For choice of accommodations, make a reservation now. AAA recommended.



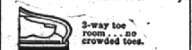
• Bath—relax in cool comfort  
• The finest cuisine is yours to enjoy  
• Central location for city nights

OVERLOOKING LAKE HURON

**A** step in the right direction with *Pad Piper* shoes



**LITTLE** feet "go places" properly with these shoes that have patented construction features for proper balance and comfort.



3-way toe from crowded toes.

Miller's SHOES  
Woodward at Maple MI 4-4024

**Beauty + Value**  
AND FEATURES THAT WILL Thrill You!

**THE SMART NEW DETROIT JEWEL Gas Range**

2 BIG AWARDS IN '51

Winner of FASHION ACADEMY GOLD MEDAL FOR BEAUTY and the MERIT AWARD FOR CONSTRUCTION

This wonderful new gas range is not only beautiful, it's packed with value and performance features that mean better, easier, faster cooking. Yes, you can be doubly sure of quality, design and value when you select a DETROIT JEWEL gas range.

Here's the gas range you've dreamed about. See it. Compare it. You'll be glad you did.

FULLY AUTOMATIC MODEL ABOVE—Model No. 8-15078 ONLY \$214.95  
Other Models Priced From \$149.95  
EASY, CONVENIENT TERMS • SEE THEM TODAY  
AD-2739-15  
**CONSUMERS POWER COMPANY**

**Hardy Outlines His Reasons for B of E Candidacy**

Reasons for his candidacy for the Birmingham board of education, were stated this week by Frank B. Hardy, 851 Hazelwood. The candidate said, "I have long had a sincere interest in schools and the important role that they play in our community. My goal is to give the boys and girls an education which will best fit them to become valued members of society and to give the taxpayers highest return on the dollars they invest in education."  
Hardy added, "I am a candidate for the board of education because I believe that every citizen must be willing to invest his time and energy toward the betterment of the community."

HE CONCLUDED, "It will also be my policy to keep the parents fully informed of all the school board proceedings and facts which affect their children."  
Hardy has been a resident of this city for six years and his two children have been educated in and graduated from Birmingham schools.  
A native of Virginia, he received a bachelor of science degree in electrical engineering from Virginia Military Institute and did post graduate work at University of Pittsburgh and Toledo university.

He is an engineer with Dearborn Motors Corp. and was in aircraft manufacturing during World War II. Prior to that time he lived in Pittsburgh, Pa.  
THE CANDIDATE has been active in youth programs, serving as district committeeman of the boy scouts and on PTA committees at Barium and Baldwin high schools. He also has been a long time member of the Sideline Quarterbacks club.  
Hardy is a member of the Engineering Society of Detroit, High Twelve Club of Birmingham, and the First Presbyterian church, where he is a member of the Session.

**Ex-Commissioners To Draw Up Rules**  
Mayor Chad Ritchie has appointed three former city commissioners on a rules committee to draw up regulations for handling such communications. Chosen were Bruce Booth, Garland Tait and Donald Bell.

**A BASKETFUL OF SAVINGS FOR YOU**

HILLS BROTHERS

<b>YOUNG TOM Turkeys</b> 49 <sup>c</sup> lb.	<b>HALIBUT STEAKS</b> 39 <sup>c</sup> lb.	<b>SMOKED PICNICS</b> READY TO EAT	<b>COFFEE</b> . . . . . lb. 83 <sup>c</sup>
<b>THE BEST MEAT BUY IN TOWN.</b>	<b>ARMOUR'S CLOVER BLOOM CAPONS</b> 69 <sup>c</sup> lb.	<b>SHORT SHANK</b> 39 <sup>c</sup> lb.	<b>MAYWOOD LARGE TINS JUMBO RIPE OLIVES</b> 2 FOR 95 <sup>c</sup>
			<b>SHEDD'S LADY BETTY SALAD DRESSING</b> Quart Jar 49 <sup>c</sup>
			<b>TOP NOTCH DAINTY SMALL PEAS</b> 303 TIN 29 <sup>c</sup>
			<b>+ OXYDOL + DUZ</b> 29 <sup>c</sup> ea. LARGE PKGS.
			<b>London Lodge Sweet Pickle CHIPS</b> JAR 39 <sup>c</sup>
			<b>SALADA TEA</b> SAVE 10 <sup>c</sup> 1/2 LB. SPECIAL PRICE 52 <sup>c</sup>

**The PEAK of QUALITY at ROCK BOTTOM PRICES**

**WHOLE SMOKED HAM**

- WILSON'S
- RATH'S
- CUDAHY'S
- DUBUQUE
- OSCAR MAYER

**YOUR CHOICE 59<sup>c</sup> POUND**

**PRE-SUMMER CANNED HAM SALE!**

<b>TY-NEE IMPORTED CANADIAN HAM</b> \$2 <sup>99</sup> 3 Lbs. Each	<b>DUBUQUE 6 3/4 LB HAM</b> \$6 <sup>69</sup> EACH	<b>HORMEL'S MIDGET HAM</b> 6 3/4 LBS. \$6 <sup>99</sup> EACH
	<b>HORMEL QUARTER SIZE HAM</b> 11-2 LBS. \$2 <sup>25</sup>	

• OSCAR MAYER • CUDAHY • DUBUQUE

**CANNED HAM** 10 TO 13 LBS **lb. 89<sup>c</sup>**  
NO BONE—NO SKIN—NO WASTE

**AGED PINCONNING CHEESE** lb. 69<sup>c</sup>

**AWREY BAKERY**

Dutch Chocolate Chip Cookies . . . . . per doz. 54c  
Delicious Fresh Fruit Strawberry-Tarts . . . . . 3 for 46c  
Date Fondant Danish Sweet Rolls . . . . . 6 for 55c  
Delicious Fudge Nut Loaf Cakes . . . . . each 62c  
Maple Walnut Taffy Frosted Cup Cakes . . . . . 6 for 47c  
Danish Walnut Crisp Coffee Cakes . . . . . each 65c  
Glazed Cinnamon Roll Donuts . . . . . 6 for 43c  
SPECIALTY BREAD, A DIFFERENT VARIETY EVERY DAY (FRIDAY & SATURDAY ONLY).  
Fresh Fruit Strawberry Frosted Angel Food Cakes . . . . . each 67c (FRIDAY & SATURDAY ONLY).  
Delicious Chocolate Frosted Marble Layer Cakes . . . . . each \$1.05 (SATURDAY ONLY).  
Red Raspberry Cream Layer Cakes . . . . . each \$1.10

**MEXICAN SHRIMP** LB. 69<sup>c</sup>

**NU MAID YELLOW MARGARINE** LB. 31<sup>c</sup>

**MCMILLAN'S COUNTRY ROLL BUTTER** LB. 75<sup>c</sup>

HUNT'S NO. 2 1/2 TINS

**BARTLETT PEARS** TIN 45<sup>c</sup>

**BUMBLE BEE CHUNK & FLAKE WHITE MEAT TUNA** TIN 32<sup>c</sup>

**WHITE HOUSE APPLE JUICE** 3 Pint Bottles 29<sup>c</sup>

**FRESH FRUITS and VEGETABLES**

ARIZONA DESERT ORANGES, 3 Doz. \$1.00  
Case, \$5.25—Sweet, Fine for Juice

MICHIGAN DELICIOUS APPLES, 4 lbs. 25<sup>c</sup>

FANCY FLORIDA & ALABAMA RED POTATOES, 10 lbs. 39<sup>c</sup>

**COLLEGE INN TOMATO JUICE COCKTAIL** 2 LARGE BOTTLES 43<sup>c</sup>

**PETER PAN SALTERD PEANUTS** 2 JARS 49<sup>c</sup>

**Snow Crop FROZEN FOODS**

**Mixed Vegetables** 10 oz. 2 for 45<sup>c</sup>

**LEMONADE** 8 1/2 Oz. Pkgs. 2 FOR 29<sup>c</sup>

**ORANGE ADE** 6 oz. 2 FOR 33<sup>c</sup>

**ORANGE AND GRAPEFRUIT JUICE** 6 oz. 2 for 43<sup>c</sup>

**GRAPEFRUIT** 6 oz. 2 for 33<sup>c</sup>

**CUT GREEN BEANS** 10 oz. 2 for 45<sup>c</sup>

**ORANGE AND GRAPEFRUIT** 6 oz. 2 for 33<sup>c</sup>

**Green Peas** 12 oz. 2 for 45<sup>c</sup>

**Strawberries** 12 oz. Pkg. 39<sup>c</sup>

**Grape Juice** 2 for 39<sup>c</sup>

**Sires**

**RATHS SLICED BACON** LB. 69<sup>c</sup>