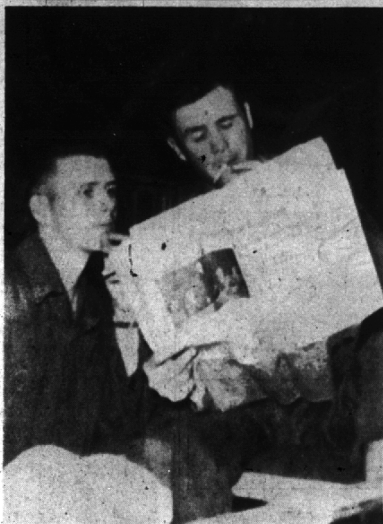


Jane is the annual month of many weddings. Oh, were it only possible for all newlyweds to attain, as the years roll on, the hopes of happiness that surround them as they make preparation for life's most adventuresome voyage!

**PECK'S**  
Cash and Carry  
Plain Dresses, Suits, Topcoats... **\$1.39**  
CLEANED and PRESSED  
For Delivery **PHONE MI 4-7724**  
Service  
WOODWARD—NEAR MAYLE

**McKinley PTA Plans Open House and Sale**  
McKinley PTA members met Tuesday to discuss plans for the open house which the school will observe June 4.  
The group will cancel its regular June meeting to take part in the open house and a sale of baked goods and needlework.



WHAT'S NEW IN Birmingham is read by Pvt. George L. Burdick, Jr., former Birmingham High School football captain, who is shown examining a copy of The Eccentric as an unidentified buddy looks over his shoulder. Burdick is now stationed at Dow Field, Bangor, Me., where he is taking a tower control course. He left Birmingham for the Army Air Force Jan. 3, and is the son of Mr. and Mrs. George L. Burdick, 685 Pierce.

**Sahlin Engineering Firm invents New Lifting Device**

A local firm, Sahlin Engineering Co., 247 Perdale, recently announced development of six metal jaws which accommodate various die and lift conditions encountered in the automatic unloading of stamping presses.  
Gripping members supplied with the "iron hand" will help replace manpower on operations where

manual unloading is slow, dangerous and costly. The new steel jaws are also used on special material-handling devices.  
Henry Sahlin, who invented the "iron hand", claims the new grips will expand the market for automatic press unloaders by 25%. The equipment is able to pick up either a one-ounce coin or 100-pound freight car section with ease, and several are used to unload 75-pound automobile roofs at the maximum press speed of six or seven per minute.

**Lathrup PTA Hears Talk On Children; Maps Future Plans**

LATHRUP—William E. McCarthy of the Pontiac juvenile court spoke at the May 8 Lathrup PTA meeting. His topic was "Children and Their Problems, As Seen by the Court."  
McCarthy said family unity and love are the true foundations for building good citizenship in children.  
The organization served dinners at the May 7-9 Southfield Art Work Shop sessions for teachers. Mrs. Webster Owen, Mrs. John Pedersen and Mrs. Edwin Cobb were in charge.  
Mrs. Ernest Ristau, chairman of the kindergarten roundup, reported that registration would be made June 4.

**Assessment Rolls on Meeting Agenda of Southfield Board**

Included on the agenda for the Southfield township board May 22 meeting will be a review of the special assessment roll for paving in two subdivisions.  
Assessment districts are Kirkshire, Birwood, Buckingham, Dunblaine and Birmingham boulevard in D. J. Healy's Golfhurst subdivision and Kirkshire and Bates in Rex Humphrey's Eco City subdivision.  
Also to be considered will be a discussion on approval for a subdivision at the corner of Telegraph and 13 Mile to be called Helman's Woods. Board members are studying a report on this matter made by the township plan commission.

**Golf Academy Starts Season**

The Royal Oak Golf Academy, Coolidge highway, east of Woodward ave., has opened for the season. Don Soper, one of the proprietors, said much work and improvement was done this spring to seed the entire fairway and install grass tees.  
John Orlick is the other co-owner and Bill Strickland, for the past couple of years a pro at LaGorse Country Club in Miami Beach in Florida, will be in charge of the academy which will be open from 10 a.m. to 11 p.m. seven days a week.

**RUGBY SPORTS WEAR**  
"for all Good Sports"

RUGBY Swimmers and Beach Wear rate high with men who want to feel right in the swim and look right on the sand.  
Like all Rugby Sportswear, they're styled for action and attraction in novel, new and eye-arresting ways.  
Designed by RUGBY KNITTING MILLS, INC.

**Mulholland's**  
MEN'S AND BOYS' DEPARTMENT

**MCGREGOR**  
KNIT ACTION SPORT SHIRTS

ice cool, summer sun wear  
Your favorite action-styled knit shirts in combed cotton, Durena, terry — all planned in new bold, masculine colors and patterns — washable, of course.

**BONITA CABLE**... Durena yarn with three color blended cable chest strips washing into stripes.

**3 PEBOS**... Durena yarn in self-colored jacquard weave. Features placed patterns in your choice of cable, diamond, or octagonal figure. In pastel and new deep tones.

**3 AMIGOS**... Best knit cotton with vertical striping in your choice of three widths. Crew neck, rib sleeve.

MANY OTHER STYLES FROM WHICH TO CHOOSE THE GAYEST T-SHIRT COLLECTION YOU'VE EVER OWNED

\* Trade Mark  
**MULHOLLAND'S** MEN'S AND BOYS' DEPARTMENTS

**TYPEWRITERS REPAIRED**  
New and Rebuilt Typewriters For Sale  
**Birmingham Printing**  
309 East Maple - MI 4-4740  
CLAUDE WALKER JOHN WILLIS

**LIBERTY CLEANERS**  
for better dry cleaning  
PICK UP & DELIVERY SERVICE  
**PHONES MI 4-0222 MI 4-9700**  
Haynes At Hunter Blvd.  
We Own and Operate Our Own Plant

**Pert-Look Collar!**  
exclusive gingham plaid!

350  
Matching Cap \$1.25  
SHIP 'N SHORE

Delightful little collar — that flips open or buttons high — on a shirt that's casual as the weather, tailored to a turn. In exclusive SHIP 'N SHORE plaids, inspired by the glowing colors of a desert sky at sunset. Ever lovely, ever washable combed gingham, Sanitized, colorfast. Sizes 30 to 40.

**Mulholland's**

Now! Matching  
**Life**  
Bra and Girdle  
in Dupont Daeron  
(FIBRE V)

For Fit, For Comfort  
For a Sweetheart of a Figure

Your favorite Life Bra and Girdle now in DuPont's new "breathing" fabric... DACRON. High absorbency, yet dries in a jiffy. Needs little or no ironing. Won't shrink. Won't stretch. Durable. Soft as silk to the touch. Cool. Tearable.

Life Bra in Daeron \$3.50  
Life Girdle in Daeron \$1.50

The  
**F. J. Mulholland**  
Company

**+ All Risk Insurance +**  
**THE McCLELLAN AGENCY**  
Successors to the Rice A. Howell Agency  
Rm. 245-247 Briggs Building MI 4-2860  
Financial Security is Second only to Wealth

**Lingerie**  
.. beautiful.. grand value

moonlight becomes you

**Moonlight White**  
romantic slip  
by **Artemis**

Artemis mixes moonbeams with lace and arrays you in a slip with a wide self ruffle that gives body to the hem of full-skirted summer dresses — especially show dresses. Patented Artemis Figure-Perfect cut completely covers your bra; straight front skirt won't ride up. Moonlight white or blue in cool rayon crepe. Sizes 32 to 40; 32S to 36S.

**\$5.95**

heavenly idea in lingerie

**Moonlight White**  
dream-struck gown  
by **Artemis**

Artemis goes to great lengths with lace, trailing it like moonbeams on skirt, bodice and straps... to make a cool gown of gleaming rayon crepe. Moonlight white, pink or blue. Sizes 32 to 40.

**\$7.95**

The  
**F. J. Mulholland**  
Company