

Lead Roles Cast For Annual Spring Ergasterion Play

Patricia Hogan and Ellen Ann Adams will share the role of Mary Todd Lincoln in Robert Sherwood's "Abe Lincoln in Illinois" when Ergasterion produces its

twenty-second annual spring play April 20-21 in the Cranbrook auditorium. Gene Tollfree of West Branch, and Jan Simpson of Galesburg, Ill., will share the role of Abe Lincoln in the Sherwood classic. The remainder of the cast will be made up of students from Cranbrook's Ergasterion club and the Cranbrook Summer School for the Theatre.

Casting the rest of the 21 parts is now in progress. In charge of stage design is Robert L. Stevenson, who will be assisted by stage manager Charles Hutchins. Ray Brant is in charge of costumes, while Chris Huntley will handle publicity and Tom Lewens will take care of tickets and business.

SCREENS AND STORM SASH
 • WINDOWS ALL SIZES
 • CUPBOARD DOORS ALL SIZES
 • FLUSH DOORS ALL SIZES
 1184 Grand Avenue
 at Ruffner
 PHONE MI 4-9424
WOODCRAFT CO.

Dean Yocum

Teacher of piano and voice

STUDIO GRINNELL'S - BIRMINGHAM

MI 4-5135

Rev. MI 4-1056



ACCOMPANYING THE 136 Birmingham high school students now on this year's Washington group trip are these faculty members. They are front row, left to right, Miss Gladys Holloway, Principal Ross A. Wagner, Mrs. Mary Hartwick, H. Ross Scrimgeour and Mrs. Carol Darling. In the back row are Larned A. Goodrich and Eugene A. Hubbard.

BARNUM JUNIOR HIGH NEWS

A GROUP OF BARNUM students will review the new books purchased for the library. This group will have an opportunity to

select the new books, be the first to read them and then review them briefly for the newspaper. In this way the rest of the students will become acquainted with the latest books.

Members of this committee are Bill Nechman, Karen Grooms, Ann Hammond, Margaret Davis, George Findlay, Bill Story, Bob Thomson, and Bob Brooks. If there are other students who are interested in assisting in this work, they may secure information from Miss Ward.

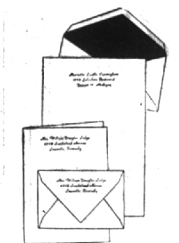


By John Burton

SPRING SPORTS are finally underway. Baseball, track, tennis, and golf teams answered the first call last Thursday. Back for various sports are veterans George Roworth and Roger Beebe, tennis; Al Tremody, Jack Lewis and Stu Scheifele, golf; Art Fairbanks, Ronnie Phillips and Carver Hendrix, track and Tom Tracy, Chuck wood, and Don Halpin, baseball.

COACH LLOYD A. COOPER thinks this year's track squad will be the smallest since he has been in Birmingham. The Maples fin-

Twice the Regular Quantity



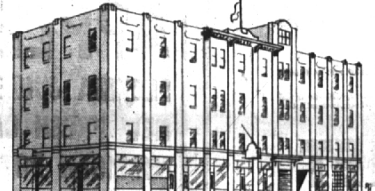
March Sale RYTEX FLIGHT PRINTED STATIONERY

Medium-weight for Air Mail or Regular Mail. Fine quality WHITE laid paper with Blue lined envelopes. Script or Block lettering. Blue ink.

- 200 SINGLE SHEETS 100 ENVELOPES
- 100 DOUBLE SHEETS 100 ENVELOPES
- 100 LARGE FLAT SHEETS 100 ENVELOPES

\$1.50
 BUY NOW! ... GET TWICE THE REGULAR QUANTITY

La Belles
 137 WEST MAPLE



You Are Cordially Invited to Inspect

OUR MODERN STORAGE
 Built Especially to Store Household Goods
 LOCAL AND LONG DISTANCE MOVING

GAUKLER STORAGE CO.
 9 Orchard Lake Ave., Pontiac, Mich.
 Dial "O" ask for Enterprise 6305

ished third in the league last year and were runners-up in the State.

THE SPORTS PROGRAM of the new high school will include wrestling.

THE RUMOR IS that Frank Whitney will be Maple golf coach next season. John Simonds who recently entered the service was coach the past few years.

COACH J. J. MYERS will devote his coaching to swimming next year while Dumas Helmrich has agreed to take over as cross country coach.

Troy Township's Progress DEPENDS UPON YOUR VOTE

VOTE STRAIGHT

DEMOCRATIC

FOR SUPERVISOR

Charles R. Ryan

FOR CLERK

Garland Aebel

FOR TREASURER

Alice E. James

FOR JUSTICE OF THE PEACE

Donald J. Flynn

Malcolm Garvock

BOARD OF REVIEW

Alexander Gow

FOR HIGHWAY COMMISSIONER

James E. Lane

FOR CONSTABLES

Clinton B. Mullins

Ray E. Pace, Jr.

Thomas H. Tucker

Bert Griffin

Monday—April 2, 1951

AS SEEN IN MADEMOISELLE

Because it's Spring and you love pretty shoes

Queen Quality

ENDEARING STYLE ENDURING BEAUTY

Enchanting new season... enchanting new fashions, interpreted for you in lovely shoes that have a wonderfully exhilarating fit.

\$12.95

miller's SHOES
 WOODWARD AT MAPLE MI 4-4024

BOYS, BOYS, BOYS!

Be An Early Bird . . .

START GETTING READY TODAY

For The Annual

Soap Box Derby



ANY BOY BETWEEN THE AGES OF 11 and 15 IS ELIGIBLE

COME IN TODAY

NORTH CHEVROLET

See your soap box chairman, George McCann, for detailed information.

You May Win a Scholarship Worth **\$5,000**

MANY OTHER PRIZES

The North Chevrolet Company
 "It Will Pay You To Start Your Racer Soon"

100 S. Woodward Midwest 4-2735



You've Got a Clear Choice

It isn't often that an election for City Commissioners presents such clear choices between issues and men as this one coming up next week. And if all of us who have been beefing so loudly turn out and vote, it ought to clear the air considerably . . . maybe we can even settle some of these questions which have been plaguing us for years.

It is amusing, sometimes, to see how all candidates are for everything good and against everything bad. To read the replies to the Eccentric questionnaire, you'd think that all of the ten hopefuls were of the same mind. But that's not true.

Neighborhood Decision is as good a tag as any, to label one of the points of difference. Some of the candidates believe that the overall needs of the city are paramount and should get action, even if a neighborhood wants to stand still—granted that the views of the neighborhood have had full hearing. On the other hand, some of the incumbents would let neighborhood protests block needed improvements—in fact, the record is full of cases where they've done that.

So—there is a clear choice for you. Do you favor the Status Quo—or do you want citywide improvements for the benefit of all? The candidates are on record about how they feel—what do the voters want?

Special Assessment—it is a prominent malady in our town, and offers another direct choice for you. Take this proposed amendment (which can be read to mean almost anything). Defenders of the Status Quo could use such an amendment to deny all city aid to a localized improvement, and I couldn't blame a neighborhood which turned mighty sour on the suggestion that if it wanted to get out of the mud, it could bear the whole cost. The present 85 percent, heaven knows, has been used to turn back progress enough times.

I feel (as many do) that we should be protected against cost of developing areas now outside the city, and that is cited as a reason for this amendment. But the amendment is full of holes, as cited above, and should spell out just what it means. I hope that it is rejected.

Again, your decision here should aid in a choice between men. The incumbents are all for this amendment. Some of the challengers are, too—but if you are in doubt you can find out by questioning. It's worth the time, and your careful decision.

One more word—the big contest is between men who have protected the Status Quo, and those who challenge it. The decision of the voters should make it clear what path the town is going to follow. And all of us who are good citizens should accept that decision and work together.

Frank Rising