

Lyle A. Hartrick, D.V.M.

ANNOUNCES

the
Establishment of Offices

for the practice of

Veterinary Medicine and Surgery

4708 Woodward Ave. at 14 M:

Ph. LI 5-2110

FIRE DAMAGE

HAS

**Closed Our Dining Room
TEMPORARILY**

Notice of reopening date will appear later.
Tap Room Open As Usual

Fox and Hounds Inn

John Ingleson, proprietor

Woodward at Long Lake Road, Bloomfield Hills

**Local Republican
Voting in 1950
Above 1948 Figure**

During the Michigan gubernatorial election last fall, Birmingham and Southfield township piled up the biggest increases in Republican votes of any municipalities in Oakland county, according to a report compiled by Robert A. Fisher, chairman of the Birmingham Republican club.

Fisher pointed out that there was an organized effort to get out the vote in both these areas.

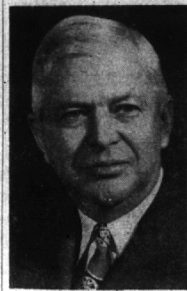
HE SAID in Oakland County alone, there were enough "stay-at-home Republicans" to have elected Harry Kelly governor by a comfortable margin.

The municipalities in the county last fall where Republicans gained votes from the 1948 elections are as follows: Birmingham, 670; Southfield township, 214; Oak Park, 168; Huntington Woods, 119; Bloomfield township, 100; Farmington, 98; Clawson, 41; White Lake township, 19; Rose township, 5; and Groveland township, 3.

Fisher pointed out that the Birmingham Republican club's get out the vote campaign was a success.

Fisher concluded, "The Birmingham program was based on the assumption that the off-year tendency not to vote could be overcome only by work of the house to house, block to block type. The results proved the assumption was correct. More Republicans voted in 1950 than had voted in 1948."

**GM President
Named Chairman
Of UF Committee**



C. E. WILSON

C. E. Wilson, of W. Long Lake road president of the General Motors corporation, has been named chairman of the United Health and Welfare Fund nominating committee.

Wilson was a member of the sponsoring committee which incorporated the fund in 1947 and has since served on the board. He is also one of the founders of the Michigan Heart association and is chairman of the board.

The committee is charged with the responsibility of recommending nominations for new members of the board of directors and with recommending for re-nomination members of the present board whose terms expire this year.

It will also recommend a slate of officers to be elected at the fund annual meeting along with nominations for chairmen and members of the standing committee.

Area members of the board include Paul Neal Averill, Herbert H. Gardner, A. G. Girard, Harry J. Klingler, Leonard T. Lewis, T. E. Wilson and Carlton Highie.

**Rev. T. M. Pullman
To Be Guest Speaker
At Unitarian Meet**

The Rev. Tracy M. Pullman of the Unitarian-Universalist church, Detroit, will speak at an April 4 meeting of the Birmingham Unitarian Fellowship at 8 p.m. in the Community House.

This is the second lecture in a series on liberal religion. The evening's topic is "Religion Begins with Man", to be followed by a discussion. The meeting is open to the public.

Mr. Pullman is a member of the Torch and Wranglers clubs, is on the Detroit Round Table of Catholics, Protestants and Jews and chairman of the religious education division of the Unitarian summer assembly at Lake Geneva, Wis.

LATHRUP VILLAGE NEWS

By LILLIAN DIEDERICH
PHONE SOUTHFIELD 3488

Community Church Events

Mrs. Edwin Shaver and Mrs. Sam Dwork were co-hostesses to Circle 1 at the Dwork home, Thursday afternoon. Mrs. Verne Blake entertained Circle 3 for a cooperative luncheon Wednesday. Circle 4 met Tuesday evening at the home of Mrs. Webster Owen. Mrs. H. English and Mrs. Fred Shirley were co-hostesses to Circle 5 at the latter's home on Tuesday.

April 1 is the last day to turn in the Missionary boxes. The guild will give the proceeds to Lapeer training school. Mrs. Norman Iverson is in charge.

Circle 1 is sponsoring a card party luncheon April 4 in Fellowship hall. Tickets may be secured through Mrs. E. H. Holmes or any Circle member.

Special Services

Dr. Homer Hammonree, lecturer and singer, opened his special program at the Community Presbyterian church last night which will run through April 8. Dr. Hammonree is director of inter-state variety of Christian Fellowship.

Guild Meets

Regular meeting of the St. Sebastian guild was held Tuesday in the Shrine grade school cafeteria where breakfast was served. Plans for the April 4 bridge luncheon were completed. Part of the proceeds will be used to help purchase wool materials for the afghans guild members are making for hospitalized veterans.

Afghans

Mrs. Herman F. Luhrs opened her home last Wednesday and again yesterday to make afghans for veterans. Members of Southfield Women's Republican club have endorsed that project for their civil defense effort. A membership drive is now underway. Please contact Mrs. John Diederich for information.

Vacation Notes

Mrs. Joseph Andrews will arrive home on Goldengate drive this week after four weeks in the south.

Word has been received that Mrs. John Stock will arrive home this week-end. The last two weeks of her vacation in the south brought Mrs. Eugene Himes down to be with her.

Of Local Interest

Bruce Hamill, son of Mr. and Mrs. Harry B. Hamill, spent his midsemester vacation from Massachusetts Academy, Woodstock, W. Va., at his parents' home on DeLong avenue.

The Eugene Schnables of Saratoga boulevard were hosts at an Easter morning breakfast for neighbors following early mass at the Shrine of the Little Flower. A pre-Easter dinner party for

members of the Diederich clan was held Thursday evening at the John Diederichs. Places were laid for 10 guests.

Ann Peppiatt is spending her midsummer vacation from an eastern school, at the home of her parents, the Guy Peppiatts of Saratoga boulevard.

**Brennans Will Call at
Adams PTA Dance**

Adams PTA will sponsor another square dance at the school on Saturday, Mar. 31, beginning at 9 p.m. Mr. and Mrs. Lee Brennan will call, and will be on hand at 8:30 for special instructions for beginners.

Mr. and Mrs. Donald Parry are program chairmen. Refreshments will be served.

Items for the church page must be submitted by 3:30 p.m. Thursday of the week before publication.

Lustrous mauve or pink
Pearls
in varied styles . . .

Highly ornamental . . . side-drapes; novelties; rhinestone clasps; necklaces; dog-collars; one-to-four strands; opalescent beauties for spring, \$3. Matching earrings, \$1. All plus tax.

Jewelry — Street Level

Jacobson's
Maple at Bates Birmingham

*Simulated

LITTLE FOLKS SHOP

presents

"BABY DEER"

by

TRIMFOOT



For baby and the run-about, there is a "Baby Deer" shoe of finest leather, featuring soft, intermediate or hard sole to meet the individual needs.

FELT SHOES IN PASTEL AND WHITE
ARE IDEAL FOR BABY. SIZES 0 TO 3

175 WEST MAPLE BIRMINGHAM

There is only one Little Folks Shop in Birmingham

**Sunnybrook Golf
Opening Slated**

On Saturday evening, April 7, Sunnybrook Golf club on 17 Mile road between Mound and Van Dyke, will inaugurate a new golf season by holding a buffet and dancing party for golfers.

All public links golfers and their wives are invited to the Spring Jamboree which has been arranged by a group of the club members, Ross stated.

He also announced that Jim Anderson of Birmingham, long recognized as an outstanding teaching pro in the Detroit district, will be on the Sunnybrook staff this summer.

Anderson, pro for many years at Pine Lake Country club, will teach golf and will be available for lesson appointments evenings and weekends throughout the summer.

JACK ROSS will be in the pro shop on weekends, and Ted Matkoski will be on the first tee Saturdays, Sundays and holidays.

According to Ross, Max Evans, club pro for the past several seasons, will continue to play the professional golf circuit which he has done throughout the winter months.

Leather or Metal Mesh
Belts... the width of fashion

Midriff markers of polished calfskin to cinch center interest a choice of widths from 2 1/4 to 2 inches. Black, navy, red, green, or brown. \$1 to 2.50. Shining gold mesh, gold clasped, elasticized, in small, medium and large sizes. \$5. It's one of our metallics, a luxurious accessory.

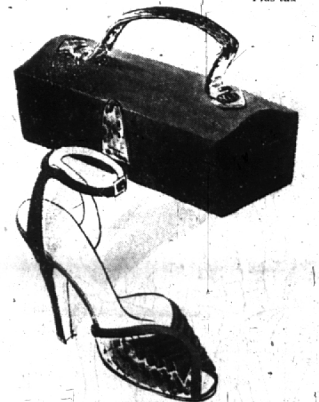
Jacobson's
Maple at Bates Birmingham

Rich Suede or Cobra

... texture contrast for accessorizing

New shapes, new textures, new outlook . . . blending of the soft and the shiny, the smooth and the grained. Mademoiselle drapes a sandal with suede, sleeks it with cobra. Navy. The box handbag is uniquely tailored with suede all over but for the touch of cobra at the snap clasp and handle. Navy.

Sandal, 16.95 Handbag, 19.95 Plus tax



SHOE SALON — STREET LEVEL

Jacobson's

Maple at Bates Birmingham



The Bolero Dress

is independently a basic,
does double duty with a jacket

Appropriate to the town scene, to spring itself . . . the bolero-jacket dress is basically simple alone, becomes an ensemble with its own little bolero. Left: Large splash print with the eye-catching use of white, the contrast of a brilliant sash. Black or navy sheer rayon crepe. \$25. Center: Navy or black sheer rayon crepe, neatly pin-tucked at the bodice front. Trimmed, bow-end and cuffed with white pique. 29.95. Right: White polka dots on brown or navy sheer rayon crepe, with conversation-piece door-hook buttons. \$25. Each in sizes 12 to 20.



DRESS SALON — STREET LEVEL

Jacobson's
Maple at Bates Birmingham

PARKING AREA FOR YOUR SHOPPING CONVENIENCE