

C. F. SMITH CO. COMES TO BIRMINGHAM!

- NEW STREAMLINED MODERNISTIC SUPER MARKET IS STOCKED AND READY FOR BUSINESS.
- FULL LINES OF NATIONALLY ADVERTISED GROCERY MERCHANDISE.
- COMPLETE LINES OF GOURMET PARTY FOODS AND SHELF DRUGS.
- PRE-CUT AND WRAPPED FRESH TENDER SELF-SERVE MEATS.
- FARM-FRESH FRUITS AND VEGETABLES FOR WHICH C. F. SMITH CO. HAVE LONG BEEN FAMOUS.
- COMPLETE BAKERY.
- FROZEN FOODS.

C. F. SMITH COMPANY
... where price tells and quality sells!
The Grocery Store - Around the Corner!
-over 300 PURE FOOD STORES-

STORE HOURS:
9 A.M. - 9 P.M.
MON. - SAT.
FIRST WEEK



LISTEN EVERY WED. NITE . . . 10:30 P.M. . . . WJR
GUY LOMBARDO SHOW
● CHERRIN'S PARTY SWEET CANDIES
● KLEIN'S MEATS
● RE-CLEAN CLEANER
● C. F. SMITH COFFEE
● BREAST OF CHICKEN TUNA

FLORIDA VALENCIA

ORANGES

176 Size
DOZEN

39^c

U.S. No. 1 McIntosh
APPLES 4 lbs. 25^c
IDAH0 BAKING
POTATOES U.S. NO. 1 10 lbs. 43^c
NEW FLORIDA
CABBAGE CRISP GREEN HEADS lb. 10^c
RUTABAGAS 4^c

BRADLEY BAKERIES



TRY THESE DELICIOUS BAKERY TREATS TODAY

EASTER EGG LAYER CAKE

98^c EACH

Rich and moist - two layers of yellow cake covered with divinity frosting, coated with tender coconut and prettily decorated with Easter eggs. Just right for this holiday occasion!

EASTER CHICKS

2 FOR 27^c

The children will love them! Cup cakes and marshmallow coated with colored candy icing and all dressed up with a bear and cocks comb. They're sure to please.

COOKIES RABBITS AND CHICKENS

50^c DOZ.

Buttery, shortbread cookies full of glistening appeal from colored sugar. At our price you can please the family with plenty.

BROWN SUGAR RAISIN RING COFFEE CAKE

52^c EACH

A new coffee cake developed especially for this opening. Tender, flakey Danish pastry wrapped around a luscious filling of butter, brown sugar and raisins. It's melting quality is typical of all Bradley Coffee Cakes.

Bradley's wish you a very happy Easter - And Remember! For taste - more tempting rolls, cakes and cookies - Make Bradley's a part of your C. F. Smith Shopping list!



OUR GOLDEN ANNIVERSARY STORE
499 HUNTER BLVD. at HAZEL ST.

ANDREW McGRAW, Manager
JOSEPH MARTIN, Assoc. Mgr.
DON SCHROEDER, Meat Mgr.
WILL ALL BE ON HAND TO GREET YOU AT THIS BEAUTIFUL NEW SUPER MARKET

C. F. S.
COFFEE
lb. Pkg. 72^c
Tastes as good as it smells

GROUND FRESH IN THE STORE

Court House Brand
COFFEE lb. 74^c
VACUUM CAN lb. 79^c
Drip, Silex or Regular Grind



FROZEN FOODS

Honor Brand
BRAND
STRAWBERRIES 16 oz. 49^c

Minute Maid
ORANGE JUICE
2 5-oz. 45^c

Libby's
PEAS 2 8-oz. 35^c



LARGE GRADE "A" FRESH

EGGS

DOZEN 58^c

New York Sharp
CHEDDAR CHEESE
lb. 59^c



BANQUET BRAND
WHOLE CHICKEN

3 1/2 lb. Can \$1.65

Del Monte Brand
GREEN PEAS 2 NO. 303 35^c
Cans
Mott's
APPLE SAUCE 2 Jars 29^c
Real Gold Concentrated
ORANGE and BLENDED JUICES 2 6-oz. 33^c
Cans
Red Sour Pitted
CHERRIES 2 No. 2 35^c
Cans
Del Monte Brand
FRUIT COCKTAIL No. 2 1/2 39^c
Can
Court House
46 oz.
Grapefruit, Orange and Blended Juices Can 29^c

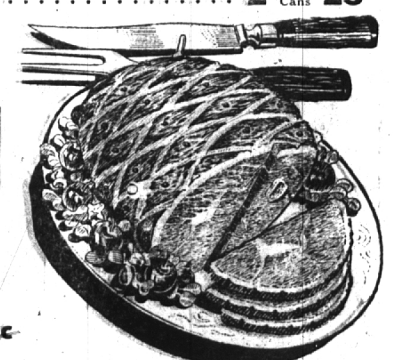
Seaside Brand
LIMA BEANS 2 No. 303 25^c
Cans
Campbell's
PORK AND BEANS 2 16-oz. 23^c
Cans
Franco-American
SPAGHETTI 2 16-oz. 25^c
Cans

POPULAR BRANDS
SMOKED

HAM

Whole 12 lb. avg.

lb. 63^c



SHANK HALF, 6 to 8 lb. avg. lb. 57^c
BUTT END lb. 67^c

SMALLER SIZE, 10-12 LB. AVERAGE HAMS, SLIGHTLY HIGHER



LEG OF SPRING LAMB
-LB. 79^c

Swift's Premium Skinless

FRANKFURTERS 1-LB. PKG. 59^c

MICHIGAN'S FIRST,
OLDEST and LARGEST
CHAIN OF PURE
FOOD STORES



C. F. SMITH CO. where price tells and quality sells

GOLDEN ANNIVERSARY YEAR

OVER 300 PURE FOOD STORES



MICHIGAN'S FIRST,
OLDEST and LARGEST
CHAIN OF PURE
FOOD STORES