



MENSWEAR FAVORITES

attuned to Spring

It's a New Season . . . Time to Step Out in a Smart New . . . Spring New Outfit from Shoe-Tips to Hat-Tips!

FIRST CHOICE FOR THE EASTER PARADE

Sport Coats

A versatile selection including everything from the popular corduroys to the finest of woolen fabrics.

\$14.95 to \$37.50

Slacks

Rayons and wools. Gabardines, flannels, cool tropicals . . . all styled for casual days ahead.

\$8.95 to \$18.50

Shirts

Manhattan's finest styles. Both white and colored.

\$3.50 up



Neckwear

Handsome ties, solids, patterns, smart new spring colors.

\$1.50 up

Hickok Jewelry

Collar bars, cuff links, key chains, etc.

\$1.50 up

Hosiery

Wools, spun nylons and mixtures.

75c up

Hickok Belts

Genuine leather, many types, all belt shades and widths.

\$1.50 up

Topcoats

Our collection of Spring topcoats will assure you of a smart looking appearance wherever you go this Spring. Tweeds in both tan and gray and the ever popular gabardines are much in evidence here.

\$27.95 to \$55.00

Fine Leather Wallets

Soft pliable, but long wearing leathers with the right compartments to please everyone.

\$3.50 to \$15.00

Mulholland's Men's and Boys' Department



CANDIDATES' COMMENTS

(Continued from Page 3, Part 3)

deserve to know why and how their money will be spent.

SPECIAL ASSESSMENT CHANGE: Yes, I favor this amendment in cases of semi-arterial or arterial streets where improvements are being made for the general public use. Abutting property owners should be penalized by additional cost. Conversely, where improvements are being made to serve "localized interests", the cost of such improvements should not be spread over the general tax rolls.

MAPLE BRIDGE ISSUE: In regard to the completion of the Maple bridge approaches, I feel that we have no choice but to complete the job which was started.

This job should be done as soon as possible as the present bridge, with our ever-increasing traffic, is a definite hazard which must be eliminated.

FURTHER COMMENTS: Birmingham is no longer a village—it is a city. In its growth we have fallen heirs to many serious and painful changes.

Streets, sewers, sewage disposal, water supply and many other community services have become cramped—and are inadequate—some must be improved or replaced. It is my conviction that delay in this work will net only more serious trouble and expense.

Robert S. Owen

303 Park street; a resident of Birmingham for six years and Detroit for 30; born, Toledo, Ohio; attended Old Central high school, Detroit and was graduated from the University of Detroit school of commerce and finance, Bachelor of Commercial service degree; life member, Delta Sigma Phi. In automotive business 25 years, 18 with Chrysler Corp.; presently with Plymouth division as executive assistant, director of shows and exhibits; past director Detroit Sportmen's congress; formerly active in Adams school Boy and Cub Scouts; president, Birmingham Taxpayers' Protective association.

DECREASED CITY COSTS: Yes, costs to the taxpayers can be cut by the reduction of proposed

budget set for planning commission. It can be cut five of the six thousand dollars now that the ground work for the proposed master plan has been completed. Also, during this period of national emergency and critical material shortages, stricter economy is certainly in order as a protective measure.

CITY PLAN COOPERATION: There is a paramount need for team work between the city commissioners and city planners to preserve the character of Birmingham. I think the plan commission should arrange for some of their members to attend every city commission meeting to hear and understand what the citizens want.

STREET IMPROVEMENT PROGRAM: I believe the objec-

tions of those in the neighborhood who share the costs of street improvement should be considered. That is should be the democratic way of government by the people.

PART vs. TOTAL PLANS: In answer to this question, I believe in better public enlightenment—making sure the public is given the whole story behind every undertaking—complete costs, arguments pro and con—and all other factors of public interest. No more piecemeal projects!

I recommend regulations requiring the city commission to hold advertised public hearings and make complete legal and financial investigations before a proposition is voted on by the commission and voters.

SPECIAL ASSESSMENT CHANGE: I believe that the city commissioners should not be held responsible for the extent of the city's participation in special assessment projects. In my opinion this proposition opens the door to possible pressure on the commis-

sion in paying the city's share for public works.

MAPLE BRIDGE ISSUE: Yes, since the bridge is completed, and is badly needed, there seems to be no good reason for not providing the approaches as planned. However, I thoroughly disapprove of the piecemeal method by which the whole project has been handled.

FURTHER COMMENT: I recommend that the city clerk be required to send out notices of all public hearings to property owners who will be directly affected by rezoning, condemnation and assessments.

Frank Rising

1020 Brookwood; Birmingham resident 12 years; A.B. degree, University of Kansas; general manager for Automotive and Aviation Parts manufacturers, Inc., 12 years; member Detroit Athletic club; Recess club; Oakland Hills Country club. (Continued on Page 6, Part 3)

Congratulations!

TO THE

C. F. SMITH COMPANY

ON YOUR

GOLDEN ANNIVERSARY STORE

499 HUNTER BLVD. - BIRMINGHAM

PALMER - SMITH

General Contractors

REID BROS.

Brokers

MARR & MARR

Architects

PETERSON ELECTRIC

Electrical Contractors

LAPOINTE HEATING

Heating Contractor

ASPHALT PAVING PRODUCTS

Paving Contractor

LONG SIGN CO.

Sign

W. J. HARTWIG

Electrical Material

GEO. ROUB

Painting Contractor

PETERSON GLASS CO.

Window Glass

HAVEN-BUSH CO.

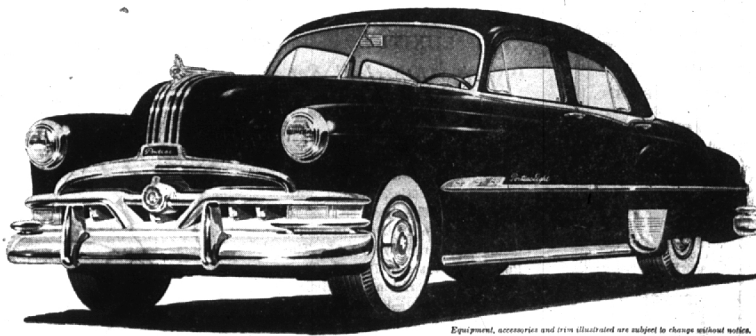
Structural Steel

Grand Rapids, Mich.

Dollar for Dollar

you can't beat a

Pontiac



Equipment, accessories and trim illustrated are subject to change without notice.

Yours for Years of Dependable Transportation!



America's Lowest-Priced Straight Eight

Lowest Priced Car with GM Hydra-Matic Drive (Optional at extra cost)

Your Choice of Silver Streak Engines—Straight Eight or Six

The Most Beautiful Thing on Wheels

When you buy a Pontiac you buy more than pride of owning the most beautiful thing on wheels—you buy a car that year after year will deliver completely satisfying, care-free performance.

The same records that prove Pontiac's unmatched dependability also prove its long-range economy. For Pontiacs are designed and soundly built to operate year after year—for thousands upon thousands of miles—with the absolute minimum of routine maintenance.

When you choose your new car choose it for beauty, of course, but choose it also for its reputation of downright dependability. In either case, you'll choose Pontiac—and you'll respect your own good judgment for years to come. In short, you'll know first-hand why more loyal owners than ever say that "Dollar for Dollar You Can't Beat a Pontiac!"

WILSON PONTIAC-CADILLAC, Inc.

275 North Woodward Ave.

Phone Midwest 4-1930 and JORDAN 4-6655