

# The Birmingham Eccentric

Providence never intended, I think, to visit upon the human family the disasters that too often descend upon it. Disaster is not Heaven's gift to human beings who deserve happiness; and those who really know this are among the happiest of people.

Wall Washing  
House Washing  
Commercial Work  
Free Estimates  
**Suburban Window Cleaners**  
ART ZETTEL MI 4-0169

### Warm Days Bring Salesmen, Annual Official Warning

By ALICE E. MORGAN

Peas of all kinds come with the warm summer weather, including obnoxious salesmen. Now some salesmen are polite, considerate and "promoting" an honest product. Others—well, others aren't quite in the same category.

It is this latter group that brings warnings each year from Better Business Bureaus, Chambers of Commerce and police departments. They are the ones who go into a long recitation, collect a down payment and like the well-known Arabs, silently steal away. They are also the ones who

practically force their way into your home, come to wander about as freely as welcomed guests.

UNFORTUNATELY, some of this latter group have been visiting Birmingham lately, and the City of C and police are being loaded with complaints from housewives who have been "taken in" or who have been subjected to extreme rudeness on the part of these salesmen.

Chas. Mortensen of the Chamber of Commerce and Police Chief Ralph W. Moxley issue a joint warning to know the firm with which you are dealing. They advise residents to make no down payments, nor turn over any articles for repair, cleaning and so on to companies they are not familiar with.

Locked doors, unopened to unrecognized salesmen, both point out in a pure and simple safety measure. A salesman who does not enter your home cannot get away with your valuables.

"IT IS A shame," Moxley and Mortensen said, "that these conditions exist. There are plenty of salesmen who are honest and are representing honest firms, who suffer from the practice of the others."

The public has no way of knowing. By just looking at or listening to a man, whether or not he is honest. If our warnings are heeded, the honest man suffers, the dishonest man goes right on making money.

In an effort to combat these not-so-good salesmen, the City of Birmingham requires all door-to-door workers to obtain a local license.

Residents who are shown this license can be assured that the man has at least made his presence known and has been judged satisfactory at the city hall.

### Approval of Plat To Be Considered By Troy Board

Approval of the plat for Pine Hill subdivision at the northeast corner of Adams and Wattles roads will be considered by the Troy township board Monday evening, June 25.

The township zoning commission has recommended that the plan be rejected because it "does not conform to limitations of the township zoning ordinance 22 and is not compatible to the surrounding area."

The matter was tabled from the May 28 meeting as the board requested the state and county to conduct tests of the soil at the location. Plans call for the plat to include 186 lots, one-quarter acre in size.

### Lost Casting Causes Car Damages, Goes Begging for Owner

Anybody want a casting? Police here would like to locate the owner of a casting which apparently fell off a truck, landing in the road in front of the Colonial apartment on North Woodward sometime Friday night or Saturday morning.

W. Grandall, 3541 Larchlea and J. C. Staley of Detroit, reported to police that their cars had been slightly damaged when they "ran into an object" lying on the road.

Police Chief Ralph Moxley said that his department had made numerous checks on business firms in the area but could find none which would claim the errant casting.

### Dutch Elm Tree Disease Symptoms Pointed Out

City Forester William Lebold cautioned local residents to keep a sharp lookout for symptoms of the Dutch Elm disease.

The disease has never reached the city, but the forester emphasized that his department wants to be prepared should it come.

SYMPTOMS of the disease is that the branches of the elms will die or be wilted toward the top of the trees. Lebold asked any residents seeing such a condition on either their elms or city owned trees to contact his department.

After examination, if the elm is suspected, samples will be sent to the government laboratory in Hoboken, N.J. to check for the ailment.

The forester pointed out it is especially important to protect elms in Birmingham because they form 50% of the tree population. Symptoms of the disease can be apparent anytime during the growing season, Lebold said. He also stated that in many cases dead or wilted branches are a sign of other tree ailments, but by reporting such cases, no chances will be taken.

Once a tree has been stricken with Dutch Elm disease, there is no hope for it. When the forestry department is sure the tree has the disease, it then has to be destroyed.

Birthdays, anniversaries, guests, births, parties are all news—all the society editor about them.

General news deadline is 4:30 p. m. each Tuesday.

### Detroit Firm Names Account Executive

Clark E. Pardee, Jr., 1848 Henrietta, has been appointed account executive of the specialty services division of Flores, Inc.

This appointment climaxes a 16-month training program which included extensive work in the production, editorial and contact departments.

Pardee joined Flores in February, 1950. He is a graduate of the University of Michigan and served three years with the Army Air Corps during World War II.

### Let Me Build Your Home

**HENRY M. HENDERSON**  
GENERAL CONTRACTOR  
CUSTOM BUILDING - REMODELLING  
Free estimates gladly given.  
Phone: Va. 6-1847 13951 Warwick, Detroit 23

Register Your Boy NOW for a grand summer of Camping at

### CAMP DAVAJA

Brighton, Michigan  
4 Weeks \$175  
8 Weeks \$350

Michigan's finest camp for boys! COMPLETELY SUPERVISED! WRITE TODAY for FREE Catalog—telephone

**DAN NOEKER**  
Brighton 4177  
Camp starts June 24  
Second period starts July 22

**THE NATIONALLY FAMOUS Mountain Valley Mineral Water**  
NOT SPRINGS  
This crystal clear, delicious tasting health water is non-carbonated. Not a laxative. It contains minerals important to health. CALL FOR A CASK TODAY!  
Groups Market  
Phone MI 4-6100

## Carrie Lee's Chinese Foods

856 N. Woodward  
North End of Birmingham

EGG ROLL With Plum Sauce 60c  
PARTIES - DINNERS - LUNCHEONS

Serving Exotic Chinese and American Foods  
Moderate Prices  
Excellent Quality

Open Daily 11:30 to 10:30  
Orders to Take Out or Reservations Call MI 4-7576

### Kincaid Credit Jewelers to Open Here This Week

Friday and Saturday will mark the opening of Kincaid's Credit Jewelers. The business, at 213 E. Maple, was recently purchased from Mr. Ruby Kincaid by Daniel H. Crane and his son, Nathan D. Crane.

The Cranes also own and operate a Pontiac jewelry store. The Birmingham store will be a branch of the 6-year-old Pontiac business.

NATIONALLY KNOWN diamond ring sets will be featured along with many famous brand watches and jewelry accessories. Watch and jewelry repairing service also will be offered.

Daniel Crane has been in the retail jewelry and clothing business for over 31 years.

**ACME Window & House Cleaning Company**  
Phone MI 4-6920  
832 BOWERS BIRMINGHAM  
"Oakland County's Oldest Window Cleaning Service"

### Contest to Select Regatta Queen Slated by Club

Invitations to enter the "Queen of the Regatta" contest for the annual Oakland County boat club regatta on Sylvan Lake July 7-8 have been extended to any single girl between the ages of 18 and 25 who lives in the county.

Entries must be filed by June 20, either by mail or telephone. Information should include full name, age, and address and entries will be accepted at the Oakland County boat club, 2530 Ferndale avenue, Sylvan Lake, Pontiac.

The queen and her court will be selected Saturday, June 23, at a dancing party in the boat club. The motorboat and sailing regatta is expected to attract some of the leading race drivers of the Midwest.

If you don't want it, someone else does! Write an Eccentric Classified Ad.



Gifts & Greetings for You—through WELCOME WAGON from Your Friendly Business Neighbors and Civic and Social Welfare Leaders

On the occasion of: Arrivals of Newcomers to City

Mrs. H. Wales Price Midwest 4-0516  
Mrs. W. B. Boulton Midwest 4-3350  
(No cost or obligation)

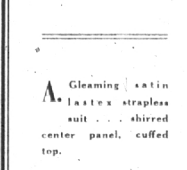
**POTTER Moving & Storage Co.**  
136 Brownell  
Phone MI 4-1612

no. 1 specialist in packing!  
ALLIED VAN LINES, INC.  
No. 1 on U. S. Highways—No. 1 in Service—No. 1 in Your Community

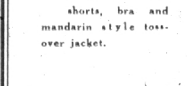
OPEN FRIDAY EVENING TILL 9



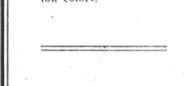
Figure-hugging satin latex in exciting colors... built-in bra top. Misses' sizes.



A. Gleaming satin latex strapless suit... shirred center panel, cuffed top.



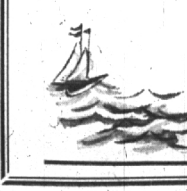
B. 3-piece play ensemble. Cuffed shorts, bra and mandarin style toss-over jacket.



C. Bare midriff favorite in sleek satin latex, halter top... new high fashion colors.

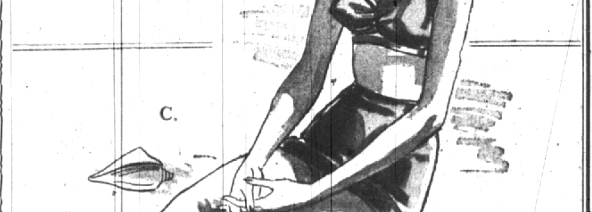
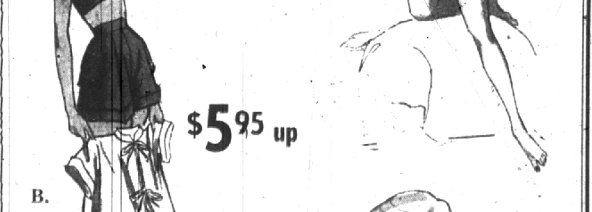
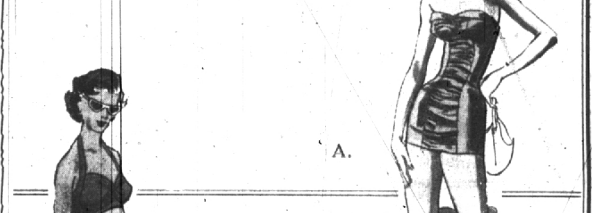
Children's BATHING SUITS  
Complete selection of fine suits for the small fry.

\$1.95 up



## The prettiest Swimsuits FOR SURF AND SAND

Swim for fun, swim for health... swim in style in a suit from our large selection! Look to Jantzen and Rugby for fabulous figure flattery, too. Come In Today!



The **F. J. Mulholland** Company