

*This is so easy  
When you want to make  
a payment  
Pay by check*

Open Your  
CHECKING ACCOUNT  
HERE  
FOR REAL  
CONVENIENCE

**THE BIRMINGHAM NATIONAL BANK**  
BIRMINGHAM, MICHIGAN  
Member Federal Deposit Insurance Corporation  
Member Federal Reserve System

**ELLIOTT FURNITURE COMPANY**  
Located on East Side of Dixie, 1/2 Mile South of Waterford  
**FINEST UPHOLSTERING**  
Our twenty-six years in Pontiac is your guarantee of satisfaction. Our upholstering craftsmen and experienced tradesmen qualified to refinish and restyle, if necessary, your most treasured pieces. Reupholstered furniture may also be refinished in our complete cabinet and finishing department. Slight additional charge for refinish. Our material and fabric selection is complete.  
**CUSTOM MADE FURNITURE**  
5390 Dixie Highway Phone Orlando 3-2641

Use Eccentric Classified Ads  
For Best Results



**YOU CAN'T  
TELL A TONI  
FROM NATURALLY  
CURLY HAIR!**

You can't tell a new, improved Toni wave from Nature's loveliest wave! Your hair will feel like naturally curly hair—comb like naturally curly hair—look like naturally curly hair. For Toni has the patented waving lotion formula—plus the new wonder neutralizer, Permox, that conditions your wave silky-soft... yet longer lasting. Only Toni has Permox—only Toni guarantees your wave will look soft and natural from the very first day—and for months to come. Ask today for new, improved Toni.



TONI Refill \$1



**P.S.**  
2 oz. . . . \$3c  
4 oz. . . . \$1.00  
1 lb. family economy size \$1.59

**TONI CREME SHAMPOO** makes your permanent take better, look lovelier—gives you Soft-Water Shampooing even in hardest water, leaves your hair wonderfully soft, glistening with highlights.

**Wilson's**  
WOODWARD AT MAPLE

**Women With Heart Conditions  
Learn Housekeeping Short Cuts**

Michigan State College and Wayne University are the first U. S. educational institutions to offer free instruction in work simplification for women disabled by heart disease. The Michigan Heart Association provides funds for classes and supervises their operation. At right, Mrs. George Zank, of Dearborn, demonstrates two-handed dusting. Below, women cardiac patients learn heart-saving methods of housework. Birmingham housewives interested in making their kitchen and household work simpler and easier may write to the Michigan Heart Association, Detroit 1, for a free copy of the booklet, "Heart of the Home."



sound effects and will be assisted by Dave Gibbons, Roger Miller and Dick Carlson. Student director is Mary Jane Clark. Next week's broadcast will be "Pygmies are Pygmies."

If you don't want it, someone else does—sell it thru an Eccentric Classified Ad!

**Radio Theatre to  
Present Episode  
From Fairy Tale**

Summer radio theatre, under the direction of Mrs. Montzelle Clark and sponsored by the recreation board, has passed the halfway mark with several broadcasts. "With Kid Gloves" Student director was Dave Gibbons, who plans to make radio and television his career.

Last Thursday's broadcast was to its credit. Heard in that broadcast were Roger Miller, Ann Voss, Ebel Didier, Gail Christie, Jim Taup, Bob Luscombe, Mary Jane Clark and Roger Waud. Joan Sweating handled the music and Bob Perkins and Palmer Bolinger, were in charge of sound effects.

Thursday, July 26, the group will present another episode from Alice Wonderland, entitled, "Advice from the Caterpillar." Katherine Bigge plays Alice with Jim Taup taking the part of the Caterpillar. They are supported by Nancy Winder, Pat Kannell, Dave Murphy, Carol Brinkline, Jane Moehler and Barbara Gowans.

DICK WILSON is in charge of

**Harry O. Smart**

- Life Insurance
  - Annuities
  - Estate Planning
- 164 W. Maple MI 4-9440

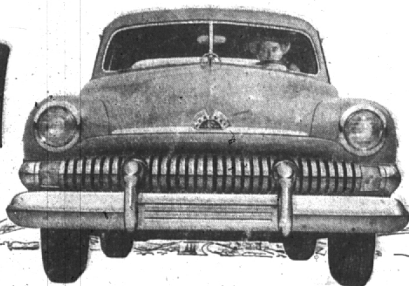
**Botany  
Bernat**

AND OTHER  
POPULAR  
**YARNS**  
in 410 Colors  
MANY IMPORTED  
YARNS

Mondays and Fridays  
10:00 A.M. to 8:00 P.M.  
Tuesdays, Wednesdays,  
Thursdays and Saturdays  
10:00 A.M. to 6:00 P.M.

**BELL KNIT SHOP**  
323 W. SIXTH ST.  
ROYAL OAK  
(Located Downstairs)

**Highway  
Test**



**Buyway  
Test**

**1. Road-Test proves its performance!**

\* Try a Mercury for size. Try it for balance, pace, and hustle. Try it for mountain-climbing power. You'll find each and every inch the performance-packed value that Mercury owners say it is. For Mercury is the car that cradles you gently, needles through traffic, parks in a pocket. It has the right combination of features to make driving real fun—handling ease, comfort and power to spare. Yes, and ride in this great car and you'll want to drive it home.

**2. Budget-Test proves its value!**

\* Does it have a down-to-earth first price? Mercury's price tag you can understand—a big dollar's worth for every dollar invested.

\* Will you be sure of good gasoline mileage? Mercury has proved its more-miles-per-gallon by winning officially sponsored economy tests.

\* Is it famous for long life? It is indeed! 92% of all Mercurys ever built for use in this country are still on the road, according to latest annual official registration figures.

\* Will trade-in value stay high? Mercurys keep their value; used car market reports consistently prove it.

Make the  
**MERCURY**  
2-Way Test



for "the best deal of your life!"

**3-WAY CHOICE!**

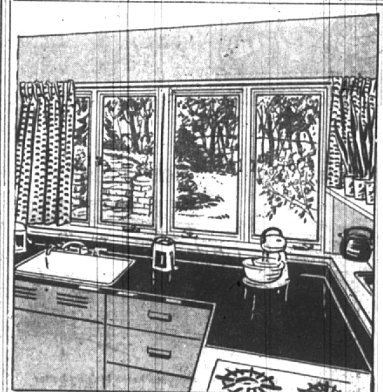
For "the drive of your life" Mercury now proudly makes available a triple drive in transmission. Merc-O-Matic Drive, the new standard, smoother, more efficient automatic transmission—or Turbo-Touch-Shift-Drive. Overdrive are optional extra cost. There's also three-speed standard transmission.

Don't miss the big television hit, "TOAST OF THE TOWN," with Ed Sullivan.

Sunday Evening, 7:00 to 8:00 P.M. Station WJBK-TV, Channel 2.

**TOM McDONNELL, INC.**

850 SO. WOODWARD AUTHORIZED LINCOLN MERCURY DEALER PHONE MI 4-1900 or MI 4-5311



**ANDERSEN  
Windowalls**

ADD BEAUTY TO YOUR NEW HOME

Install a WINDOWALL like this one in your kitchen. Then you'll open it up to sunshine and fresh air—and disclose a lovely view.

The each swing out—permitting you to work in the midst of a fine breeze. And if it's cold outside, these windows act as a weather-tight section of the wall. Ask us about ANDERSEN WINDOWALLS.

**LAWSON & SON  
LUMBER & SUPPLY CO.**

484 Forest Midwest 4-6810

BUILDERS SUPPLIES

OPEN 7:30 A.M. to 5:00 P.M.