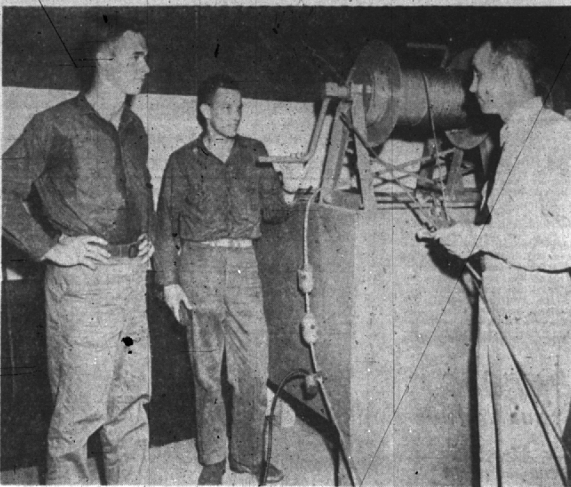


Hotels Cannot Be Compared to YORBA LINDA
 If your home is crowded, your guests are welcome.
 This gorgeous estate has sleeping quarters for suit parties, couples. Only 5 minutes by bus or car.
 Moderate Rates
 Telephone Lincoln 1-9317
 DIRECTIONS: 2 miles South of Birmingham on Woodward Ave. - over 15 Mile Road - West for signs - over 15 Mile Road - YORBA LINDA TOURIST ROOMS

ROYAL OAK GOLF ACADEMY
 MICHIGAN'S FINEST GOLF RANGE
NOW OPEN!
 10 A.M. to 11 P.M.
 7 DAYS A WEEK
 Coolidge Highway, One Block East of Woodward Avenue—Near the Ball Park
 Professional Bill Strickland IN ATTENDANCE AT ALL TIMES
 PH. LI 5-0509



A LOCAL RESIDENT, Frederick D. Harper (left), 1236 Edgewood, and Bernard Clark of Grand Rapids, receive instructions from a naval officer on the operation of a windlass. Both midshipmen are students at the University of Michigan. With more than 1600 NROTC midshipmen from 52 colleges and universities throughout the country, Harper is undergoing amphibious training. Ashore training is conducted at the U.S. Naval Amphibious Base, Little Creek, Norfolk, Va., and afloat instruction is taking place in ships and craft of the amphibious force, U.S. Atlantic fleet.

Traffic Deaths Again Drop, But Injured Increase

May was the second consecutive month this year to show a decrease in traffic deaths in Michigan. There were 117 persons killed, four less than during the same month in 1950.
 According to a State Police monthly statistical report, however, the upward trend in injuries and accidents continued. May accounted for more persons injured than any other month this year and accidents totaled only slightly below the January high of 15,645.
 There were 4,284 persons injured, an increase of 353, or 29 per cent, over 3,931 in May last year. Accidents climbed to 15,335, an increase of 4,493, or 42 per cent, over 10,842.

THE ENTIRE reduction in traffic fatalities occurred in rural areas. There was an increase in urban areas. Pedestrian deaths are up sharply, 39 as compared to 27 for the same month the previous year.
 The traffic toll for the first five months includes 570 persons killed, 17,695 injured and 70,980 accidents. Compared with the same period a year ago deaths are up 10, or seven per cent, over 530, injuries increased 3,396, or 37 per cent, over 15,099, and accidents climbed 12,203, or 21 per cent, over 38,777.
 Travel during April, the latest month available, was 1.9 billion miles, an increase of ten per cent over 1.7 billion in April last year. Travel during the first four months was up 12 per cent, 7 billion miles as compared to 6.3 billion.
 The death rate per 100 million miles of travel was 6.3, five per cent below the rate of 6.6 last year. This was the first time in 1951 that the death rate was lower than during the same period of the previous year.

PECK'S Cash and Carry
 Plain Dresses, Suits, Topcoats \$1.39
 A CLEANED and PRESSED
 For Delivery PHONE MI 4-7724
 WOODWARD—NEAR MAPLE

PRESCRIPTION SUN GLASSES
 YOUR PRESCRIPTION GROUND IN SUN GLASSES—SINGLE VISION OR BIFOCALS. No Need For Eye Examination. We Take The Correction Off Your Present Glasses With Our Lensometer.
 Formerly associated with Square Deal Millers, Detroit, in Optical Dept. as Manager and Optician
Norman R. Becker, O.D. And Staff
 MI 4-0644

People's Column
 The recent welcome letters for this column. All letters must be signed, but signatures will be kept confidential unless otherwise stated. Letters must be limited to 200 words.
 (Continued from preceding page)
 courage for men to try to change what they honestly feel is wrong. This is not a case of personalities, but of differences of viewpoint.
 IT MIGHT BE interesting to note that in checking the minutes of the commission meeting when the planning board ordinance 420 was voted upon, I discovered that it was passed by a vote of 6 to 1. I am not ashamed to admit I feel persons on the planning committee should be limited to residents who are registered voters and taxpayers, and we, in a town of 15,000, certainly must have seven able to fill these places.
 The objection voiced in the letter and in a recent editorial in the Eccentric—"only thing that gives some concern is the possible rebuff to the surrounding townships in preventing them from having a member on the plan board to act as liaison between the city and the outlying areas"—seems weak, especially when our Commissioner Ralph Main serves on the Oakland county planning board—which should be liaison enough.
 IF MATTERS arise concerning other locales in planning, then of course, we would welcome consultation with persons in those areas. But it basically is a matter of local self-government.
 Bloomfield Village probably would not want Birmingham residents on a planning commission for them, nor would the state of Michigan want Illinois citizens on their state commissions, and Troy township has a planning board without feeling the need for Birmingham residents there.
 I repeat, to consult for advice, yes—but not as an official member.
 It has been said democracy thrives when there is an active and alert opposition. Opposition need not divide us with bitterness.
 WE HAVE an active and forthright city commission with certainly a diversity of opinions, but I feel they are accomplishing a great deal of constructive work. Their very diversity has caused them to examine every issue in great detail, which is very good from a legal and financial standpoint.
 The Russell Committee on the MacArthur hearings stated, "The issues which divide our people are far transcended by the things which unite them."
 I am sure this is true of Birmingham as well as the nation-at-large.
 Mrs. MARTHA C. SCHAEFER
 251 E. Brown

Call CRESCENT Carpet Cleaners
 for your Wall-to-Wall Carpet and Upholstery Cleaning in Your Home
 LI 3-3552
 123 Catalpa Royal Oak

BIRMINGHAM
 Birmingham, Mich. - Midwest 4-3533 - A United Detroit Theatre
OPEN THRU FRI 6:45 P.M. HOLIDAYS 1:45 P.M.
 NOW SHOWING THROUGH TUESDAY, JULY 17th

They're Campus Bound!
 ...and every father's son will love every mother's daughter of 'em!
Take Care of my Little Girl
 Technicolor
 starring JEANNE CRAIG
 with Mitzzy Jean ROBERTSON - GAYTOR - PETERS

THEATRE
 Columbia salutes
THE TEXAS RANGERS
 in SUPER CINE COLOR
 GEORGE MONTGOMERY - GALE STORM
 Starting Wednesday, July 18th Through July 21st
"FABIOLA"
 MICHELE MORGAN - HENRI VIDAL
"SEALED CARGO"
 DANA ANDREWS - CLAUDE RAINS

BLOOMFIELD
 BIRMINGHAM, MICH. • MI 4-6006 • A UNITED DETROIT THEATRE
OPEN MONDAY THRU FRI 6:45 P.M. SAT.—SUN. HOLIDAYS 1:30 P.M.
 NOW SHOWING THRU SUNDAY
THE DRAMA OF A FIGHTING OUTFIT... AND THE MEN WHO BLASTED THEIR WAY ACROSS THE SEVEN SEAS!
 HERBERT J. YATES
FIGHTING COAST GUARD
 starring BRIAN DONLEVY - FOREST TUCKER - ELLA RAINES
 Screen Play by Kenneth Gomer • Story by Charles Marston's Warsaw
 Technical Advisor—Lt. Commander Robert C. Clonnon, U.S.C.B. • Assistant Production Director—JOSEPH KANE • Filmed with the cooperation of the UNITED STATES COAST GUARD Republic Pictures Corporation Herbert J. Yates, President

I know a hundred secrets... and each one is worth my life!
WAS A COMMUNIST FOR THE F.B.I.

CHINESE AND American Foods
Pearl's Garden
 Air Cooled
 ● FAMILY DINNERS Served Chintown Style
 ● LUNCHES, DINNERS At Reasonable Prices
 ● CARRY OUT ORDERS Egg Roll—Appetizer... .60c
 ● PRIVATE PARTIES Welcomed
 469 SO. WOODWARD
 PHONE MI 4-2913 BIRMINGHAM
 OPEN, SUNDAYS AND EVENINGS

GOLFERS Forest Lake Golf Course
 Rates (18 Holes)
 MONDAY THRU FRIDAY until 9 A.M. \$1.25 (seniors)
 MONDAY THRU FRIDAY after 9 A.M. \$1.75 (seniors)
 MONDAY THRU FRIDAY after 3 P.M. daily (twilight) \$1.00
 SATURDAY & SUNDAY until 2:30 P.M. \$2.25
 SATURDAY & SUNDAY after 2:30 P.M. (twilight) \$1.50
 DALE WEITZEL, ROY THIBERT
 1/2 Mile West of Telegraph on Square Lake Road

largest finest
 in its field! A swank and sweeping 197% inches long... longest in its field!
 A huge and husky 3190 pounds of streamlined action... in the model illustrated... Arrives at all low-priced cars!
 And a road-hugging, road-smoothing 58 1/2 inches between centers of rear wheels... widest tread in its field!
 in its field! Chevrolet is the only low-priced car offering you the outstanding beauty of Body by Fisher... the extra-efficient performance of a Valve-in-Head Engine... the cradled comfort of the Knee-Action-Ride and the vital safety of a Curved Windshield with Panoramic Visibility and Jumbo-Drum Brakes—largest in its field.
 ... and finest no-shift driving at lowest cost with **POWER Glide Automatic Transmission***
 Chevrolet's time-proved Powerglide Automatic Transmission, coupled with 105-h.p. Valve-in-Head Engine, gives smoothest and finest no-shift driving at lowest cost—plus the most powerful performance in its field!
 *Combination of Powerglide Automatic Transmission and 105-h.p. Valve-in-Head Engine optional on De Luxe model, at extra cost.

The Kingsley Inn
 WOODWARD AT LONG LAKE ROAD • BLOOMFIELD HILLS • MIDWEST 4-1142
TAKE A BOW...
 If You're Responsible for the Success of a—
 ● Banquet
 ● Luncheon ● Supper Party
 ● Dinner
 ● Cocktail Party ● Sales Meeting
 ● Wedding
 ...or for any special event—you can take the bows—because WE do the rest. With more and better space together with all of the services and facilities of The Kingsley Inn, you can be assured of success on any occasion. For details and reservations call the catering manager at Midwest 4-1400.
 Gifts & Greetings for You—through WELCOME WAGON from Your Friendly Business Neighbors and Civic and Social Welfare Leaders
 On the occasion of: Arrivals of Newcomers to City
 Mrs. H. Wales Price
 PHONE—Midwest 4-0516
 Mrs. W. E. Boulton
 Midwest 4-2350
 (No tax or obligation)

lowest-priced line in its field!
 Yes, these bigger, more beautiful, more finely balanced Chevrolets are the lowest-priced line in their field. Moreover, they are extremely economical to operate and maintain, on the short drive or over the long pull. Come in... see and drive Chevrolet... and you'll choose America's largest and finest low-priced car!
CHEVROLET
 MORE PEOPLE BUY CHEVROLETS THAN ANY OTHER CAR!
THE NORTH CHEVROLET COMPANY
 1000 So. Woodward Ave. Phone MI 4-2731