

Church Services

First Presbyterian Church
Rev. W. G. Harris, P.D., Minister
Rev. Robert E. Grady, Jr., Minister to Youth
Mr. John J. Hester, at 9:30 a.m. Nursery and Beginners meet at 11 a.m.—Morning Worship, Sermon: "The Word of God and the Impoverished."—Worship meet. 7:00 p.m.—Worship and Westkirkmen service.

St. James Episcopal Church
215 West Maple Avenue
The Rev. Harold E. Towne, Rector
The Rev. Thomas A. Hirsch, Curate
Miss Ruth Gray, Director of Religious Education
Kent McDonald, Organist and Choir Master
8:00 a.m.—Holy Communion
9:30 a.m.—Church School, ages 3-18
11:30 a.m.—Morning Prayer and Sermon
7:30 p.m.—Evening Prayer, ages 2½ through 8
Holy Communion First Sunday of the month
Wednesdays—Holy Communion at 11:00 a.m., except First Wednesday, which will be at 12:15 p.m.

Unitarian Fellowship
Abner M. MacCarty, President
Mrs. Alice Parks, Chairman of Religious Education
18:00 to 18:15 years at the Apple Orchard, 145 South Adams road
Adult Meetings at the Community House as announced

Embury Methodist Church
Woodward at Benaville
The Rev. Reginald Becker, Minister
The Rev. Eugene C. Smith, Minister
Harold Phillips, Church School Supt.
Leland Symons, Choir Director
Barbara Bradwood, Pianist
9:45—Church School
11:00—Morning Worship Service

First Methodist Church
Ministry
The Rev. Robert A. Lawson
9:30 a.m.—Morning worship
11:00 a.m.—Church Service and Nursery (for small children) during the hour before church school
7:00 p.m.—Senior Fellowship, 300 Maple St.
Wednesday evening—Church School, 300 Maple St.

Townside Community Church
Southfield Road at 1 1/2 Mile Rev. John D. Rose, S.D., S.D.
11:00 a.m.—Church Service and Church School
11:00 a.m.—Junior High Youth Group (alternate Sundays)
7:00 p.m.—Senior High Youth Group (alternate Sundays)
Practice, 7:00 p.m.—Senior High Youth Group (alternate Sundays)
Wednesday evening of each month, Men's club
Third Friday evening of each month, Young Married Couples

Our Shingled Lutheran Church
14 Mile road at Melton
The Rev. David J. Duncan, Pastor
Mrs. Roy Lewis, Organist
A. Zahradny, Sunday School Supt.
Sunday School, 10:00 a.m.
Church Practice, 8 a.m., Thursday
Men's meeting, first Monday of month
Women's club, first Wednesday of month, 4 p.m.
Sunday school staff meets second and third Wednesdays
Nursery maintained for children under the during hours

Kirk in the Hills
The Rev. Dr. G. H. Caldwell
10:00 a.m.—Church School classes for youth and young adults
Senior High grades
Dr. Leslie A. Bechtel, worship Service
11:00 a.m.—Church School classes for those 11 years and younger
Youth Fellowship, 4:00 p.m.—Vesper Service, Dr. Bechtel, minister

St. Hope of the Hills
Dunbar Road
The Rev. Joseph C. Beck, Pastor
The Rev. John Howard, Asst. Pastor
Sunday School, 10:00 a.m.
Wednesday meeting—8 a.m.
Sunday masses at 8:00, 9:30, 11:30 and 12:15

Troy Methodist Church
Square Lake Rd., near Livernois
The Rev. W. S. Sherrill, Minister
Sunday school at 10:30 a.m.
Sunday School, 11:30 a.m.
Youth Fellowship, 7:00 p.m.

English Lutheran Church of the Redeemer
3600 West Maple Road
The Rev. Theodore Wugger, M.A., Pastor
Henry Kling, Choir Director and Organist
Sunday School—8:45-10:45 a.m.
A staff of capable teachers for the Nursery and Grade Departments, Kindergarten, Eighth, Grades, and Junior High School Division
Sunday Services—9:30 a.m. and 11:00 a.m.
Sermon Theme: "Handmade to Faith"
Nursery is maintained for small children during the 9 o'clock service

Church of the Nazareth
225 S. Woodward
The Rev. Willis H. Vetter, Minister
10:00 a.m.—Sunday School for all ages
11:00 a.m.—Worship Service
Sermon Theme: "The Real Unbroken"
11:45 a.m.—Bible Study
Sermon Theme: "The Lost Axe-Head"
7:30 p.m.—Prayer and Bible Study

Bir Beaver Methodist Church
Square Lake Rd., near Livernois
The Rev. E. C. Hocking, Minister
Divine Worship, 10:30 a.m.
Sunday Church School, 11:30 a.m.
Youth Fellowship, 7:30 p.m.

United Brethren Church
14 Mile and Edgewood
A Friendly Church with the Gospel Message
Sunday School, 10:00 a.m.
Morning Worship, 11 a.m.
Evening Worship, 7:30 p.m.
Wednesday Prayer Service, 7:30 p.m.

The Christ Fellowship Church
Masonic Temple—127 S. Woodward
The Rev. Willis H. Vetter, Pastor
Sunday Morning Worship—10:00 a.m.
Sunday School—11:00 a.m.
Pravanglistic Service—8:00 p.m.
Cottage Prayer Meeting—Wed. 8:00

First Church of Christ Scientist
Chester and Willis
Sunday service—11 a.m. Lesson—Sermon for Sunday, January 14, "Surrender"
Sunday School—9:30 a.m., Pupils 12 to 20 years
11:00 a.m., Pupils under 12 years
Wednesday Meeting—8:15 p.m.
Infants Room open every Sunday at 10:30 a.m. at 351 E. Maple Avenue.
Reading room open daily, but except Sunday and holidays; evenings 7-9 except Wednesdays and Saturdays

First Baptist Church
Willits at Bates Street
The Rev. Emil Kosta, Pastor
Church organist—Miss Nancy Chena
Church director—Richard Currier
Mrs. C. H. Johnson, Church School Supt.
9:45 a.m.—Church School. Classes for all ages from nursery to adult department
11:30 a.m.—Jubilee Church for Children
11:00 a.m.—Morning worship
6:00 p.m.—Worship with Fellowship
7:30-8:30 p.m.—Praise Vespers
Church nursery open during all services
Midweek meeting every Wednesday at 8:00 p.m.
Communion on First Sunday of the month

Why keep accumulating unwanted household items? Convert them to cash by selling them through an Eccentric Classified Ad.

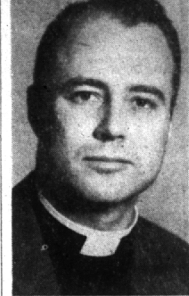
Christ Church Cranbrook Curate's Ordination Sunday

The Rev. William Henry Mead, curate of Christ Church Cranbrook, will be ordained to the priesthood at the 11 o'clock service on Sunday, Jan. 14.

The Rt. Rev. Russell S. Hubbard, suffragan bishop of the Diocese of Michigan, will officiate.

Mr. Mead will be presented for ordination by the Rev. Robert L. DeWitt, rector of the parish, who will also preach the ordination sermon.

Other participants in the service will be the Rev. Henry J. Russell, assistant at St. Luke's in Ypsilanti who will read the preface to the ordinal of the Book of Common Prayer.



REV. W. H. MEAD

News copy submitted early necessarily is given preference over late items. So the "Early Bird" usually gets the space.

The Rev. W. H. Mead, curate of Christ Church Cranbrook, will be ordained to the priesthood at the 11 o'clock service on Sunday, Jan. 14.

The Rt. Rev. Russell S. Hubbard, suffragan bishop of the Diocese of Michigan, will officiate.

Mr. Mead will be presented for ordination by the Rev. Robert L. DeWitt, rector of the parish, who will also preach the ordination sermon.

Other participants in the service will be the Rev. Henry J. Russell, assistant at St. Luke's in Ypsilanti who will read the preface to the ordinal of the Book of Common Prayer.

What's Being Planned By BIRMINGHAM CHURCHES

Holy Name
St. Cecilia's guild meets Jan. 11 at 8 p.m. in the school cafeteria.
Mrs. Donald Merritt will be hostess at her home, 1326 Cedar drive tonight, Jan. 11, for the meeting of St. Ruth's guild.

First Methodist
The Ruth Allen guild will meet Tuesday evening, Jan. 16 at the home of Mrs. Earl Braine, 1645 West Lincoln. She will have Mrs. Webster Six and Mrs. Harold Meil in assisting her in her duties as hostess. Mrs. Edgar Mumford will preside over the devotionals.

Husbands will be the guests of the Wesleyan group's members at a pot luck dinner Jan. 16. The afternoon copy submitted early necessarily is given preference over late items. So the "Early Bird" usually gets the space.

fair will be held at the church beginning at 7 o'clock. Mrs. Kenneth Junke, chairman, will be assisted by Mrs. Paul Carter, Mrs. John Wilson, Jr., Mrs. T. A. Cowman, Mrs. E. D. Spicer and Mrs. W. F. Miller.

The guest speaker of the evening will be the Rev. Dr. Arnold Runkel. Group singing will be led by Victor Ulrich.

Lutheran Redeemer
A staff meeting for the Sunday School workers will be held in the church lounge Monday evening, Jan. 15.

First Presbyterian
Three church guilds and two missionary groups plan meetings within the week.

The Sarah Hunter guild will meet Jan. 11 at the home of Mrs. William M. Barr, 1850 Pine at 8 p.m.

The Susan Trowbridge guild is planning a 1 o'clock luncheon on Jan. 16, at the home of Mrs. R. J. Hoxan, 436 Linden. The day will also see the meeting of the Elizabeth Trowbridge guild which will have a 12:45 luncheon at the home of Mrs. D. W. Millman, 1260 Yorkshire.

Mrs. Thomas Hagopian will open her home at 1225 West 14 Mile, for a 2 o'clock meeting of Missionary A on Wednesday, Jan. 17.

Mrs. Harry Allen, 556 West Maple, will be the hostess when

PECK'S
Cash and Carry
Plain Dresses, Suits, Topcoats \$1.39
CLEANED and PRESSED
For Delivery PHONE MI 4-7724
Service WOODWARD—NEAR MAPLE

It's New! Beautiful! and AUTOMATIC the EUREKA!



Imagine! No tiresome arm-acting. You merely guide the amazing new Eureka slowly — its powerful automatic cleaning action thoroughly removes the embedded dust and grit.

ONLY 1 HOUR (less under load)

SMALL DEPOSIT \$7.25 a WEEK

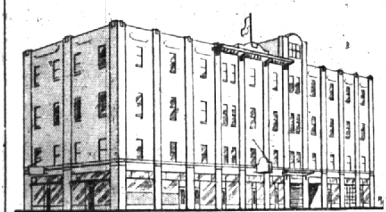
COME IN OR PHONE FOR HOME DEMONSTRATION

MOVE WITH POTTER And the ALLIED VAN LINES



POTTER MOVING AND STORAGE CO.
136 Brownell Phone MI 4-612

CRAIG APPLIANCES, Inc.
112 S. Woodward MI 4-2525



You Are Cordially Invited to Inspect
OUR MODERN STORAGE
Built Especially to Store Household Goods
LOCAL AND LONG DISTANCE MOVING
GAUKLER STORAGE CO.
9 Orchard Lake Ave., Pontiac, Mich.
Dial "O" ask for Enterprise 6305

CITY OF BIRMINGHAM, MICHIGAN NOTICE

SERVICEMEN AND VETERANS HOMESTEAD TAX EXEMPTION

IF YOU ARE:

1. A veteran of the Spanish American War.
2. A veteran of World War I and have a service or non service connected disability recognized by the United States Veterans Administration upon which compensation is paid.
3. An active service man.
4. A veteran of World War II who has been discharged from service in less than one year.
5. A veteran of World War II who has a service or non service connected disability recognized by the United States Veterans Administration upon which compensation is paid.
6. Unremarried Widow of any of above.

THEN YOU ARE ENTITLED TO HOMESTEAD TAX EXEMPTION ON \$2,000 OF ASSESSED VALUE, PROVIDING: ON JANUARY 1, 1951, YOU OWNED AND OCCUPIED THE PROPERTY AS A HOMESTEAD, DID NOT OWN PROPERTY ASSESSED AT MORE THAN \$7,500, MAKE APPLICATION SOMETIME BETWEEN JANUARY 1ST AND MARCH 13TH, 1951.

Application may be made at the office of the City Assessor, Municipal Building, who will assist you.

BRING DEED OR LAND CONTRACT, DISCHARGE PAPERS, RECENT PROOF OF RECEIVING COMPENSATION FOR SERVICE OR NON SERVICE CONNECTED DISABILITY, IF YOU ARE RECEIVING SAME.

WE RESPECTFULLY SUGGEST THAT APPLICATION BE MADE AS SOON AFTER JANUARY 1ST AS POSSIBLE.

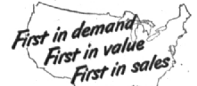
ELMER W. HAACK, Assessor
City of Birmingham, Michigan

SUBURBAN WINDOW CLEANERS
ARTHUR ZETTEL
Birmingham MI 4-0160
1818 Cole

LIBERTY CLEANERS
for better dry cleaning
PICK UP & DELIVERY SERVICE
PHONE MI 4-0222 or MI 4-9700
Hyzans At Hunter Blvd.
We Own and Operate Our Own Plant

HEARING AIDS and BATTERIES
ALL MAKES
Make Inquiry at Our Store and Get All of the Details
MI 4-2121
SHAIN'S DRUG STORE
105 W. Maple

THESE new 1951 Chevrolet trucks tell their own story... with features that add up to long, satisfying, money-saving service on the job. They're engineered to take the roughest, toughest kind of work, and keep on taking it, with the lowest possible maintenance and upkeep. These 1951 Chevrolet trucks are a step forward for the trucks that already are America's favorite—first in value, first in demand, first in sales. And you owe it to yourself to see the nation's leading truck—Chevrolet—before you buy your next truck. Check the features that will pay off for you. Then remember that Chevrolet trucks offer you all this at surprisingly low cost. You'll see it pays to buy Chevrolet. See these 1951 Advance-Design trucks—and get all the facts—today!



MORE CHEVROLETS IN USE THAN ANY OTHER TRUCK!

Great Features Everywhere You Look...

- | | | |
|--|--|--|
| <ul style="list-style-type: none"> • Two Great Engines • Valve-in-Head Efficiency • Blue-Flame Combustion • Power-Jet Carburetor • Specialized 4-Way Lubrication • Thermostatic Heat Control • Cam-Ground Cast Alloy Iron Pistons | <ul style="list-style-type: none"> • New Twin-Action Rear Brakes (heavy-duty models) • New Dual-Shoe Parking Brake (heavy-duty models) • New Torque-Action Brakes (light-duty models) • Foot-Operated Parking Brake (models with 3-speed transmission) • 4-Speed Synchro-Mesh Transmission (in heavier models) • Wide Range of Springs | <ul style="list-style-type: none"> • Improved Full-Width Seats • Adjustable Seat Assures Proper Eye Level • Large Door Openings • All-Around Cab Visibility • Side Doors Held Open by Over-Center Stop • Sturdy Steel Construction • Uni-Design Bodies • Pick-Up Bodies with Flush Skid Strips • Insulated Panel Bodies • Extra-Strong Stake Bodies • Full-Width Gravel Shield • One-Piece Fenders • Counterbalanced Alligator-Jaw Hood |
|--|--|--|

GREAT CHASSIS FEATURES
• Rugged, Rigid Frames
• Hypoid Rear Axles
• Single-Unit Rear Axle Housings

GREAT CAB AND BODY FEATURES
• New Ventpanes in Cabs
• Flexi-Mounted Cab



THE NORTH CHEVROLET COMPANY
1000 So. Woodward Ave. Phone MI 4-2735