

To a person standing on the moon the earth would appear to shine as the moon shines to earth inhabitants.

The Chaff is naught to the wheat

Through the awakening light of Christian Science thousands have dropped "the past" - with its anguish or threat of penalty - as a dream from which they are thankfully awakened.

Impartially, to any honest student, the teachings of Christian Science bring relief and release from human woe of every sort, disclosing the deep import of Jeremiah 23:28: "What is the chaff to the wheat? said the Lord."

They are mercifully led to learn that in all the vastness of infinity there is in divine reality naught but good, for God is infinite good.

Nuptials Repeated in Christ Church Saturday Evening

Grey net gowns trimmed with yellow, and matching grey net stoles were worn by the attendants who preceded Frances Joan Newell to the altar of Christ Church Cranbrook, Saturday evening for her marriage to Robert Earl Warner.

THE BRIDE, daughter of Mr. and Mrs. Frank C. Newell of Birmingham, chose for the 8 o'clock service a gown of white satin distinguished by panels of chintilly lace and full skirt. Her fingertip veil fell from a matching headpiece of chintilly lace. She carried a white camellias and stephanotis.

Charles Renfrew was the best man and the ushers were Dana E. C. Theodore, Herbert, Alan Joslyn, Jr., and John Bloomstrom.

Evening Nuptials Followed By Reception at Club

Miss Mary Winsor Orr, daughter of Mr. and Mrs. John Seymour Orr of Detroit, was wed to Leland Earl Bartholomew, son of Mr. and Mrs. Earl Bartholomew of Ypsilanti.

MRS. LELAND BARTHOLOMEW, whose residence is 4715 1/2th Avenue, Bloomfield Hills, was the bride at the ceremony.

FOR GOING AWAY the bride wore a gabled suit of Yale blue. With this she wore a grey coat and accessories. When the young couple returns, they will reside at the Forest Plaza apartment in Ann Arbor.

COMMUNITY HOUSE CALENDAR

- Thursday, February 8
6:45-7:30 p.m.—Family Dinner on 645
8:45 p.m.—Sociologist Club Dinner
9:00-9:30 p.m.—Bridal Class
9:45-10:00 p.m.—Botanical Society
9:50-10:00 p.m.—Weaving Class
10:00-10:15 p.m.—Hobby Club
10:30 p.m.—Hobby Club Party
10:30-11:00 p.m.—Luncheon Forum
10:30-11:00 p.m.—Luncheon Forum
1:00 p.m.—Delta Iota Gamma Society Party
2:30 p.m.—Senior Youth Forum
2:45 p.m.—Hobby Club
3:00 p.m.—T.M. Club Dance
3:30-4:00 p.m.—Luncheon
4:00-4:15 p.m.—Luncheon
4:15-4:30 p.m.—Luncheon
4:30-4:45 p.m.—Luncheon
5:00-5:15 p.m.—Luncheon
5:15-5:30 p.m.—Luncheon
5:30-5:45 p.m.—Luncheon
5:45-6:00 p.m.—Luncheon
6:00-6:15 p.m.—Luncheon
6:15-6:30 p.m.—Luncheon
6:30-6:45 p.m.—Luncheon
6:45-7:00 p.m.—Luncheon
7:00-7:15 p.m.—Luncheon
7:15-7:30 p.m.—Luncheon
7:30-7:45 p.m.—Luncheon
7:45-8:00 p.m.—Luncheon
8:00-8:15 p.m.—Luncheon
8:15-8:30 p.m.—Luncheon
8:30-8:45 p.m.—Luncheon
8:45-9:00 p.m.—Luncheon
9:00-9:15 p.m.—Luncheon
9:15-9:30 p.m.—Luncheon
9:30-9:45 p.m.—Luncheon
9:45-10:00 p.m.—Luncheon
10:00-10:15 p.m.—Luncheon
10:15-10:30 p.m.—Luncheon
10:30-10:45 p.m.—Luncheon
10:45-11:00 p.m.—Luncheon
11:00-11:15 p.m.—Luncheon
11:15-11:30 p.m.—Luncheon
11:30-11:45 p.m.—Luncheon
11:45-12:00 p.m.—Luncheon
12:00-12:15 p.m.—Luncheon
12:15-12:30 p.m.—Luncheon
12:30-12:45 p.m.—Luncheon
12:45-1:00 p.m.—Luncheon
1:00-1:15 p.m.—Luncheon
1:15-1:30 p.m.—Luncheon
1:30-1:45 p.m.—Luncheon
1:45-2:00 p.m.—Luncheon
2:00-2:15 p.m.—Luncheon
2:15-2:30 p.m.—Luncheon
2:30-2:45 p.m.—Luncheon
2:45-3:00 p.m.—Luncheon
3:00-3:15 p.m.—Luncheon
3:15-3:30 p.m.—Luncheon
3:30-3:45 p.m.—Luncheon
3:45-4:00 p.m.—Luncheon
4:00-4:15 p.m.—Luncheon
4:15-4:30 p.m.—Luncheon
4:30-4:45 p.m.—Luncheon
4:45-5:00 p.m.—Luncheon
5:00-5:15 p.m.—Luncheon
5:15-5:30 p.m.—Luncheon
5:30-5:45 p.m.—Luncheon
5:45-6:00 p.m.—Luncheon
6:00-6:15 p.m.—Luncheon
6:15-6:30 p.m.—Luncheon
6:30-6:45 p.m.—Luncheon
6:45-7:00 p.m.—Luncheon
7:00-7:15 p.m.—Luncheon
7:15-7:30 p.m.—Luncheon
7:30-7:45 p.m.—Luncheon
7:45-8:00 p.m.—Luncheon
8:00-8:15 p.m.—Luncheon
8:15-8:30 p.m.—Luncheon
8:30-8:45 p.m.—Luncheon
8:45-9:00 p.m.—Luncheon
9:00-9:15 p.m.—Luncheon
9:15-9:30 p.m.—Luncheon
9:30-9:45 p.m.—Luncheon
9:45-10:00 p.m.—Luncheon
10:00-10:15 p.m.—Luncheon
10:15-10:30 p.m.—Luncheon
10:30-10:45 p.m.—Luncheon
10:45-11:00 p.m.—Luncheon
11:00-11:15 p.m.—Luncheon
11:15-11:30 p.m.—Luncheon
11:30-11:45 p.m.—Luncheon
11:45-12:00 p.m.—Luncheon
12:00-12:15 p.m.—Luncheon
12:15-12:30 p.m.—Luncheon
12:30-12:45 p.m.—Luncheon
12:45-1:00 p.m.—Luncheon
1:00-1:15 p.m.—Luncheon
1:15-1:30 p.m.—Luncheon
1:30-1:45 p.m.—Luncheon
1:45-2:00 p.m.—Luncheon
2:00-2:15 p.m.—Luncheon
2:15-2:30 p.m.—Luncheon
2:30-2:45 p.m.—Luncheon
2:45-3:00 p.m.—Luncheon
3:00-3:15 p.m.—Luncheon
3:15-3:30 p.m.—Luncheon
3:30-3:45 p.m.—Luncheon
3:45-4:00 p.m.—Luncheon
4:00-4:15 p.m.—Luncheon
4:15-4:30 p.m.—Luncheon
4:30-4:45 p.m.—Luncheon
4:45-5:00 p.m.—Luncheon
5:00-5:15 p.m.—Luncheon
5:15-5:30 p.m.—Luncheon
5:30-5:45 p.m.—Luncheon
5:45-6:00 p.m.—Luncheon
6:00-6:15 p.m.—Luncheon
6:15-6:30 p.m.—Luncheon
6:30-6:45 p.m.—Luncheon
6:45-7:00 p.m.—Luncheon
7:00-7:15 p.m.—Luncheon
7:15-7:30 p.m.—Luncheon
7:30-7:45 p.m.—Luncheon
7:45-8:00 p.m.—Luncheon
8:00-8:15 p.m.—Luncheon
8:15-8:30 p.m.—Luncheon
8:30-8:45 p.m.—Luncheon
8:45-9:00 p.m.—Luncheon
9:00-9:15 p.m.—Luncheon
9:15-9:30 p.m.—Luncheon
9:30-9:45 p.m.—Luncheon
9:45-10:00 p.m.—Luncheon
10:00-10:15 p.m.—Luncheon
10:15-10:30 p.m.—Luncheon
10:30-10:45 p.m.—Luncheon
10:45-11:00 p.m.—Luncheon
11:00-11:15 p.m.—Luncheon
11:15-11:30 p.m.—Luncheon
11:30-11:45 p.m.—Luncheon
11:45-12:00 p.m.—Luncheon
12:00-12:15 p.m.—Luncheon
12:15-12:30 p.m.—Luncheon
12:30-12:45 p.m.—Luncheon
12:45-1:00 p.m.—Luncheon

Ice Blue Motif Used in Saturday Nuptial Ceremony

Miss Shirley Anne Stephen daughter of Mr. and Mrs. Harold M. Stephen of Hillside Drive, was given in marriage by her father to Richard Vincent Raymann, son of Mr. and Mrs. Clarence F. Raymann of Adams Road, on Saturday February 3, at 1 o'clock.

MISS STEPHAN selected a gown of ice blue slipper satin fashioned with an imported lace bodice and panel of lace extending to the hem to give a princess effect. The sleeves were long as was the train. Her fingertip veil of ice blue illusion was applied in a satin motif with a tiny pearl in each design. She carried a prayer book with orchids.

THE MAID OF HONOR and the bridesmaids were dressed alike, in gowns of blue faille and net. Their Juliet caps were of faille with braided trim. They carried old fashioned bouquets of ice blue flowers. Miss Patricia Madden of Detroit was the maid of honor and Miss Carol Broderick and Mrs. William Barton of Detroit, were the bridesmaids.

Joseph Raymann, brother of the bridegroom, was the best man; Robert Henderson, Thomas Pries-

ly, and Gregory McKeon all of Detroit, seated the guests.

THE RECEPTION was held in the home of the bride's parents immediately after the ceremony. Mrs. Stephen chose for her daughter's wedding, a gown of blue chiffon with chintilly lace. With this she wore a hat of blue velvet trimmed with ostrich tips.

THE BRIDE'S going away suit was of yellow wool. She wore a contrasting hat and her shoes and bag were of brown alligator. Her orchid corsage matched her suit.

After a month's honeymoon in Florida, the couple will return to their new home on Lehigh road which will be completed by that time.

Local Students Awarded Degrees

Included in the list of 1,084 candidates for the degrees conferred at Wayne university's mid-year commencement exercises last Thursday, February 7, at the State Fair Grounds Coliseum in Detroit, were 13 residing in this vicinity.

WITH THE Collegians

Irvin George Sutherland, son of Mr. and Mrs. Howard Sutherland of Birmingham, has enrolled for the second semester atornings college in Sioux City, Ia. He is sophomore and is majoring in physical education.

William A. Sampson, Jr., of Soest, boulevard, has been named Sergeant in Squadron E of the Reserve Officers' Training Corps at Lehigh university, in Bethlehem, Pa.

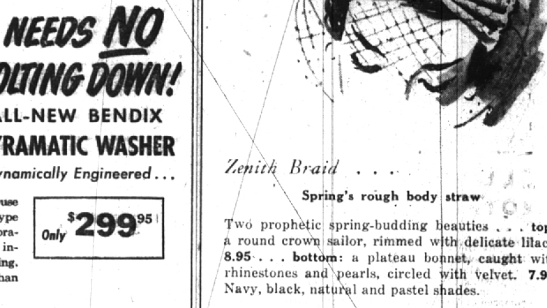


SCHRAFF'S CHOCOLATES
BIRMINGHAM DRUG STORE
1220 S. Woodward MI 4-3215

Club Tea To Benefit Deserving Students
The University of Minnesota Women's club is holding its annual bridge at the Gross Pointe War Memorial Center, on Lake Shore Road, Gross Pointe, on Tuesday, February 6, Tea will be served at 1 p.m. after which bridge will be the order of the day. Hostesses include Mrs. John Gray, chairman, Mrs. Wm. Locke, Mrs. John Ferguson, Mrs. Frank Atkinson, Mrs. Howard Baur.



NEEDS NO BOLTING DOWN!
ALL-NEW BENDIX GYRAMATIC WASHER
Dynamically Engineered...
Put it anywhere in the house or apartment... on any type floor. No bolting down, no vibration. Perfect for upstairs installation. Beautiful styling. Uses less water—less soap than any other automatic.
MI 4-3933
Leonard's
162-166 W. Maple



Zenith Braid...
Spring's rough body straw
Two prophetic spring-budding beauties... top: a round crown sailor, rimmed with delicate lilacs. 8.95... bottom: a plateau bonnet, caught with rhinestones and pearls, circled with velvet. 7.95. Navy, black, natural and pastel shades.

Jacobson's
Maple at Bates, Birmingham

Parking Area For Your Shopping Convenience

Kay Saks Tailors The Dashing Cape Suit

in three splendid Miron wool fabrics

Three master wool fabrics cut, shaped and tailored in one unsurpassed design, the gallant cape suit... Miron's yarn-dyed border worsted, Miron's imperial gabardine and Miron's cross worsted. White pique crisp at all strategic points, for the fresh natty look of spring... the cape ties dashing beneath the collar. Alone, the suit is slim and trim; with the detachable cape it becomes debonaire and doubly interesting. Shown here in all three wools, it's at once smart, crisp and inspired. a. Navy, red, lilac or brown gabardine. b. Navy and white check worsted. c. Navy and white border worsted. Sizes 10 to 18.



Jacobson's
Maple at Bates Birmingham