



UNDERCOVER CAR—It hit its auto had its roof crushed in a freak accident when a 500-pound manhole cover was blown into the air by pressure from gas forced in an underground cable from St. Louis, Missouri. Although store windows in the area were shattered by the blast, no one was injured.



BUFFET STYLE—A member of the U. S. 1st Marine Division digs his lunch out of a cold can of C-rations in an equally cold atmosphere atop a hill in North Korea. Marines manning the ridge-top position figure they're lucky to get even C-rations because only ammunition and the barest essentials necessary to life can be manpacked up the steep slopes.



PUPOTATO—Jan Fardell of Seattle, Wash., must have a psychiatric potato bug on a rampage in his garden. This misshapen tuber, resembling a big-nosed puppy, is just one of many spuds to which Fardell has added a little paint to produce whimsical animals. The gardener has no idea what causes his potatoes to assume their peculiar shapes.



FUSSY AT FUSSEN—Two feminine Austrian tourists learn the fine art of dipping their feet into a vat of disinfectant without splashing their nylon at the Fussen, Germany border. All visitors crossing into Germany are forced to undergo the sole-high bath to prevent them from possibly spreading the foot and mouth disease among cattle in Bavaria by carrying the germ on their shoes. Already, large numbers of livestock in the Fussen area have been infected with the debilitating sickness.

HAVE FUN and GOOD CHEER AT HOME THIS NEW YEAR—
with FINE FESTIVE FOODS from **Whigley's**

Lipton's **VEGETABLE TOMATO SOUP**
Package of 3 **37c**

All Vegetable Shortening **SPRY**
2-Lb. Can **89c**

All Aluminum—Electric **Corn Popper**
Complete with Cord **\$3.98**
When you buy...
Popeye—Yellow **POPCORN**
2-Lb. Cello Bag **39c**

La Choy **BEAN SPROUTS**
No. 2 Can **14c**

La Choy **CHOW MEIN NOODLES**
No. 2 Can **18c**

Goblin—Table Ready **BEEF STEW**
With Vegetables
16-Oz. Can **43c**

STEAK
With Vegetables
16-Oz. Can **48c**
Just Heat and Serve

Kanana **Banana Flakes**
For Baby Diet
5 1/2-Oz. Can **47c**

Makes a Complete Salad **SALADETTES**
No. 303 Can
2—8-oz. Cans **25c**

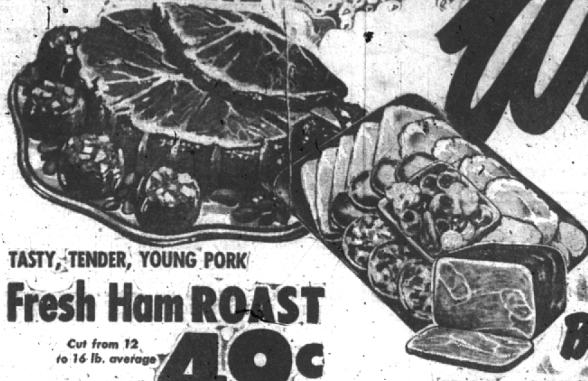
New -- Improved **SPRITE**
Liquid Suds for Dishes
Large 12-Oz. Size **31c**

SWIFT'S PREM
• SLICE 12-Oz. **39c**
• BAKE Can
• FRY

NEW ERA **Potato Chips**
7 1/2-Oz. Box **49c**

It Cleans Copperware in Half the Time!
Copper Cleaner
Also fine for Stainless Steel, Aluminum, Brass and Chrome.
Shaker Can **37c**

On Sale Thursday at All Whigley Markets.
WHAT'S NEW?
A brand butter cheese spread—a new treat on grocers shelves—Sea Island Salad Dressing. A new weak reusable roll, fruit and cheese for dessert and many more taste buds await your reading.
JANUARY **EVERYWOMAN'S** 5c **MAGAZINE** 5c



TASTY, TENDER, YOUNG PORK
Fresh Ham ROAST
Cut from 12 to 16 lb. average **49c**
Shank half 1 lb.

BUTT HALF... 63c lb. * **WHOLE HAM**... 57c lb.
NATURALLY TENDER — PRIME or CHOICE **BEEF CHUCK ROAST** 1 lb. **75c**
U. S. PRIME or CHOICE **RIB ROAST BEEF** 7-in. Cut 1 lb. **89c**
COMPLETELY CLEANED — PAN-READY **FRYING CHICKENS** 1 lb. **59c**
FULL 7-RIB CUT **PORK LOIN ROAST** 1 lb. **37c**
DELICIOUS SUGAR CURED — HICKORY SMOKED **SLICED BACON** Honey Brand 1 lb. **55c**
HONEY BRAND, GREENFIELD OR HORMELS READY-TO-EAT

SMOKED HAMS
Full Shank Half **53c**
BUTT HALF... 63c lb. * **WHOLE HAM**... 59c lb.

MICKLEBERRY — GLENDALE — PESCHKE **SKINLESS FRANKS** 1 lb. **59c**
FANCY **LARGE SHRIMP** 3-Lb. Box \$2.89 1 lb. **59c**

Kool-Krisp CELERY HEARTS
Specially Processed Large Bunch **23c**

CUCUMBERS Outdoor Grown 2 for **29c**
RADISHES Outdoor Grown 3 Bunches **19c**
GREEN ONIONS Fresh 2 for **15c**
NAVEL ORANGES California 17 1/2 Size Doz. **59c**
FLORIDA LIMES Per Tube **25c**
WALNUTS Red Diamond 1-Lb. Pkg. **49c**
DATES Desert Sweetest Fresh California 16-Oz. Pkg. **29c**
JUMBO PEANUTS Velvet Roasted 1-Lb. Pkg. **39c**

LANG'S Whole Sweet PICKLES 22 oz. Jar **32c**
MARIO'S STUFFED OLIVES No. 16 11 oz. Jar **49c**

SANDWICH SLICED BOILED HAM 1/2 lb. **59c**
CUT FROM NATIONALLY ADVERTISED BRANDS

DEL CREST AMERICAN CHEESE FOOD
2-Lb. Loaf **85c**

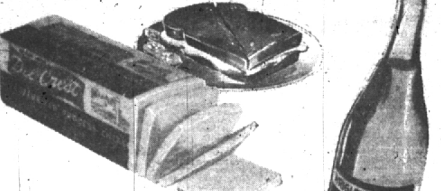
LARGE EGGS Lily Brand - Grade "A" Dozen in Carton **67c**
AGED CHEESE North Bay Tasty and Tangy 1 lb. **69c**
CHEESE American or Pimento Piece or Sliced 1 lb. **59c**
BUTTER Whigley's Pure Creamery 1-Lb. Print **81c**
MARGARINE Keyko Yellow 1 lb. **29c**

PEP-E-HERRING
14-Oz. in Cream Sauce **58c**
12-Oz. in Wine Sauce **55c**



SUNKIST 100% PURE FROZEN LEMON JUICE
Equal to 6 Lemons Not Necessary to Freeze 6 Oz. Can **33c**

TOMATO JUICE Birds Eye 6-Oz. Can 2 for **25c**
RED RASPBERRIES Top 16-Oz. Frost Pkg. **39c**
BREADED SHRIMP Top 12-Oz. Frost Pkg. **69c**
WAFFLES Downey Flakes Pkg. of 6 **25c**
BROCCOLI Top Frost 10-Oz. Pkg. **25c**



WRIGLEY'S OWN KOOL-SIP CLUB SODA
Ideal for Holiday Mixers **12 75c**
Large Bottles 3 for 25c

STOKELY'S TOMATO JUICE
Giant 45-Oz. Can **25c**

MARASCHINO CHERRIES White Swan 4-Oz. Jar **16c**
ECONOMY PAPER PLATES 50 Count 9-inch **49c**
HUDSON PAPER NAPKINS 2 80-Count Pkgs. **25c**
BURRY'S COOKIES Happy Family Assorted 1-Lb. Box **43c**
KRUNCHEE THIN PRETZELS 12-Oz. Pkg. **38c**
KRUNCHEE POTATO CHIPS 14-Oz. Bag **69c**
VELVET PEANUTS Jumbo Blended 12-Oz. Cello **45c**

SALAD BOWL SALAD DRESSING
Quart Jar **39c**

COFFEE drip or perk. 1 lb. Vac. Can **79c**



OPEN 'til 9 P.M. EVERY THURSDAY and FRIDAY