

MOMS Plan '52 Tag Day

Looking to the future, the Birmingham MOMS club has applied for, and received, city permission to conduct its annual Tag Day on Apr. 25, 1952. The group will have workers scattered throughout the city, soliciting funds to be used for the benefit of veterans and their families.

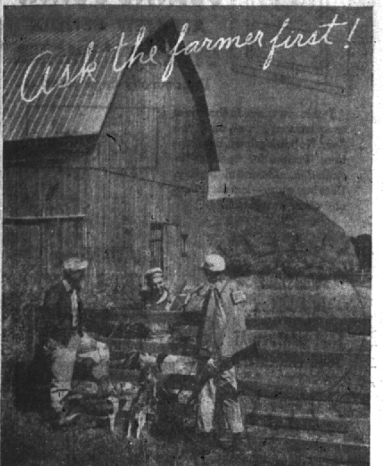
Want ads cannot be accepted after 5 p.m. each Tuesday.

If you don't want it, someone else does—sell it thru an Eccentric Classified Ad!

To Purchase Iron Lung for Troy Fire Dept.

Troy township board Monday evening authorized the purchase of a Mullikin respirator (iron lung type) for the No. One fire department at Big Beaver.

Delivery is expected by Monday, Dec. 17, according to Supervisor Norman H. Barnard. A hand-operated respirator will be kept at See Station Two.



"Ask the farmer first" is slogan of Michigan conservationists this fall as contribution toward improved farmer-hunter relationship. State conservation department is spreading slogan widely on hunting permits and signs of game laws.



DAMP DISPLAY—Scores of fire hoses send streams of water shooting skyward to form a wall of water six stories high along the south end of the Chicago River during a mock air-raid demonstration in the Windy City. Purpose of the "water wall" is to keep fires from jumping the river and spreading. Note anti-aircraft guns.



WHAT NEXT? WHY MOVABLE WINGS!—Newest plane to write headlines in the sky is the 10,000 pound Bell X-5, an experimental aircraft with sweepback wings that can be moved during flight. For takeoff, quick climb and landing, the pilot can adjust the wings to a forward position. Test flights at Edwards Air Force Base, Muroc, Calif., will demonstrate the pilot's ability to increase his speed at high altitudes by adjusting the wing's sweep-back.

Meet Your Michigan

RECORD CATFISH: MUCH OF THE NATION'S FINEST TROUT FISHING IS FOUND IN MICHIGAN. IN THE EASTERN PANHANDLE TROUT FISHING AND OPEN DIVISIONS OF A NATIONAL FISHING CONTEST RECENTLY SPONSORED BY A LEADING SPORTS PUBLICATION, EIGHT OF THE FIRST TWENTY PRIZE-WINNING CATFISH WERE CAUGHT IN MICHIGAN STREAMS.

ARTIST'S HICCA: SAUSATCH IS REPUTEDLY THE LARGEST OUTDOOR ART CENTER WEST OF NEW YORK. ARTISTS FROM OVERSEAS ATTEND THE NATIONALLY-FAMOUS ART SCHOOL AND PRINT VARIOUS SUBJECTS LIKE OLD BOY WORKS, FISHING VILLAGES, BURIED CITIES, CHIEFTAN FORESTS, MARINE WAREHOUSES, GIANT DUNES, FLOWERS AND FARM LIFE.

SHADES OF WILLIAM TELL: INDICATIVE OF YOUR STATE'S LEADERSHIP AS AN ARCHERY CENTER ARE THE 12,000 LICENSES ISSUED TO BOWMEN AND ARCHERS HUNTERS IN 1950, A 20% INCREASE OVER 1949. ARCHERS REPORTED HILLS OF 878 DEER AND FOUR BEAR.

WORLD'S LARGEST TIRE PLANT: U.S. RUBBER'S DETROIT PLANT YEARLY PRODUCES ABOUT ITS MILLION TIRES FOR BUSES, TRUCKS, BUSES AND AIRPLANES HERE ABOUT 600 MICHIGAN RUBBER SPECIALISTS, TECHNICIANS AND WORKERS DEVELOP, TEST AND PRODUCE ABOUT 10% OF ALL TIRES FOR THE AUTOMOTIVE INDUSTRY.

MICHIGAN FEATURE SERIES prepared by MICHIGAN TOURIST COUNCIL No. 20

Choice Foods for
CHRISTMAS JOY...

EMPIRE BRAND FROZEN STUFFED POULTRY

- TURKEYS
- DUCKS
- CHICKENS
- CAPONS
- PHEASANETTE
- POUSSIN

SFIRE'S, the home of finer foods, is ready. Completely stocked with the foods of the Holiday Season.

Rath's, DuBuque or Davies 10-12 lb. Avge.

Canned HAMS 79^c lb.

DuBuque **Canned HAMS 6³ lb. Size \$6.49**

STORE HOURS
9 TO 6 DAILY
Open Till 9 Friday Evening
FREE PARKING
AT REAR OF STORE

FOR YOUR FREEZER—10 to 12 lb. average

PORK LOIN 53^c lb.

WHOLE OR PATTIES
Pork TENDERLOIN 89^c lb. | RIB END **PORK ROAST 39^c lb.**

LOIN END 3 1/2 to 4 lb. Avge. | BARBECUE SIZE **SPARE RIBS 55^c lb.**

PORK ROAST 59^c lb.

New York Black Rind **CHEESE 79^c lb.**

Pea Meal Canadian Style **BACON 79^c lb.**

For Your Xmas Puddings **GROUND SUET 10^c lb.**

DuBUQUE SLICED **Bacon 59^c lb. LAYER**

RATH'S SLICED **Bacon 69^c lb. LAYER**

ROCKS and REDS STEWING **CHICKENS 49^c lb.**

Roasting **CHICKENS 59^c lb.**

KOSHER STYLE

Corned BEEF 79^c lb.

Enjoy the **HOLIDAY**

WITH THESE LOW PRICES

AWREY BAKERY

Delicious Peanut Butter Cookies..... per dozen 46c
Cream Topped Coconut Pies..... each 80c
Raspberry Spanish Sweet Rolls..... 6 for 58c
Orange Fruit Crunch Loaf Cakes..... each 62c
Royal Chocolate Fudge Cup Cakes..... 6 for 41c
Danish Buttercotch Coffee Cakes..... each 65c
Special Glazed Donut Dunkers..... per dozen 58c

PASTRY BREAD—A DIFFERENT VARIETY EVERY DAY

(FRIDAY & SATURDAY ONLY)
Small Golden Snow Layer Cakes..... each 58c
(FRIDAY & SATURDAY ONLY)
Delicious Chocolate Frosted Marble Layer Cakes..... each \$1.05
(SATURDAY ONLY)
Maple Nut Cream Layer Cakes..... each \$1.10

DON DE Coffee 79^c lb.

Dining Car Mince Meat 45^c LARGE JAR

California Figs... lb. pkg. 45c
Diamond Walnuts... lb. 49c
Krispy Crackers, Lb. Pkg. 29c
BURRY'S CHOCOLATE Chip Cookies... Pkg. 31c
White Napkins... 2 Boxes 25c
HEINZ Tomato Soup... 2 Tins 21c
STAR CROSS Tomato Juice... 46 Oz. Tin 25c

CROSSE & BLACKWELL PUDDINGS
• PLUM • FIG • DATE **TIN 49^c**

Solid Pack—White Meat **GESHIA TUNA TIN 39^c**

FRESH • FRESH • FRESH •

FROZEN Foods

AT MONEY SAVING PRICES

Snow Crop 4 Oz. Cans
ORANGE JUICE 2 for CASE OF \$575 25^c 48 CANS

Snow Crop 2 Pkgs. CUT CORN 33^c

Snow Crop 2 for BROCCOLI SPEARS 10 Oz. Pkg. 57^c

Snow Crop 2 for Diced Potatoes (Onion Flavored) 33^c

Snow Crop 2 for RASPBERRIES 69^c

MIRACLE WHIP SALAD DRESSING qt. 55c

REIBER GRAPES 2 lbs. 25c

TIDE OR DUZ 1 1/2 lb. Box 29c

SANI-FLUSH 1 1/2 lb. Can 2 for 41

BIRDS EYE

SQUASH 2 Pkgs. 39c

STEAKS Grand Duchess Each 77c

POTATOES French Fried 2 Pkgs. 47c

PONO PINEAPPLE No. 2 1/2 Tins CHUNKS 2 FOR 75^c

No. 2 Tins SLICED 2 FOR 61^c

No. 2 Tins JUICE 2 FOR 29^c

Sfire's